

PRODUCT NUMBER

87610-YXXLF

RoHS COMPATIBLE, SEE NOTE 7

PLATING

2 = 0.76µm GOLD/GXT
(PdNi WITH GOLD FLASH) ON CONTACT AREA
2µm MIN MATTE TIN ON TAIL

UNDERPLATE : 1.27µm Ni MIN

NOTES:

- 1 - HOUSING MAT'L : GLASS FILLED THERMOPLASTIC. UL94V-0 COLOR: BLUE
- 2 - PIN MATERIAL : PHOSPHOR BRONZE
- 3 - PRODUCT PACKAGED IN TUBES.
- 4 - TO DETERMINE DIMENSIONS :
N = NUMBER OF POSITIONS PER ROW
EXAMPLE : 8 POS N x 2.54 = 20.32mm

NO RIGHT POLARIZATION FOR POS 04, 06, 08.

5 - NO LEFT POLARIZATION FOR POS 04, 06, 08, 14.

6 - RETENTION LEGS IN THE CENTER OF THE CONNECTOR.

7 - RoHS COMPATIBLE PRODUCT SPECIFICATIONS

a - PLATING:

- "LF" MEANS THE PRODUCT IS LEAD-FREE,
2µm MINIMUM MATTE TIN OVER 1.27µm
MINIMUM NICKEL UNDERPLATE.

b - MANUFACTURING PROCESS COMPATIBILITY

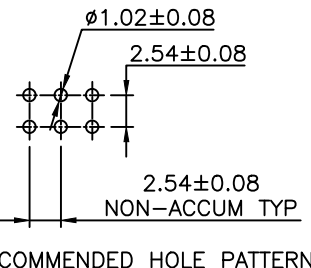
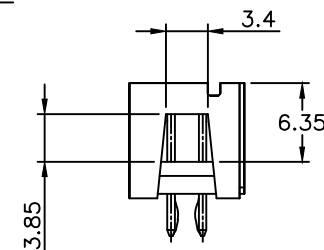
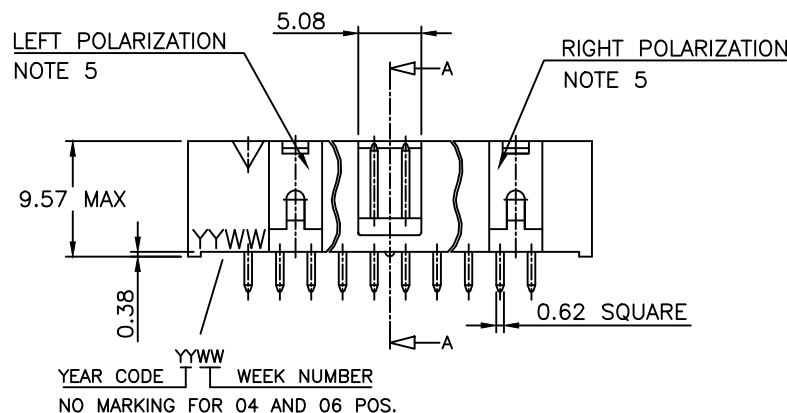
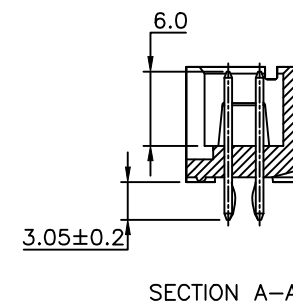
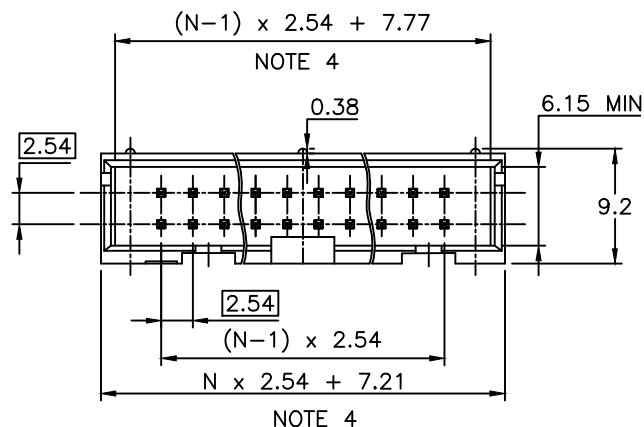
- THE HOUSING WILL WITHSTAND EXPOSURE TO
260°C ±5°C SOLDER BATH TEMPERATURE FOR
5 SECONDS IN A WAVE SOLDER APPLICATION
WITH A 1.6mm MIN THICK CIRCUIT BOARD.

c - LABELLING:

- MEETS PACKAGING SPECS AS PER GS-14-920

d - LEGAL STATEMENT: SEE GS-47-0004

TOTAL NUMBER OF POSITIONS	
06	26
08	34
10	40
14	44
16	50
18	60
20	64



mat'l. code				surface		tolerance		projection		product family	
SEE NOTES				ISO 1302		ISO 406		ISO 1101		QUICKIE	
ltr	ecr	no	dr	date	tolerances unless otherwise specified		.X ±0.3		mm		title
K	F07	0198	LMU	07.05.30	angles		.XX ±0.13		scale 2.5:1		SHR.LP.HEADER
L	F08	0146	YOV	08.04.11	linear		.XXX ±0.05		FCI		STR RETENTION LEGS
M	B-19071	LMU	14.10.15		DLE		01.01.24		dwg no		sheet 1 of 1 size
N	B-19094	LMU	14.10.16		enrg		JCO		87610		A3
H	F04	0389	JCO	04.12.22	chr		04.12.20		type		CUSTOMER Drawing
J	F06	0228	LMU	06.07.18	appd		JCO		04.12.22		
sheet	revision										
index	sheet										