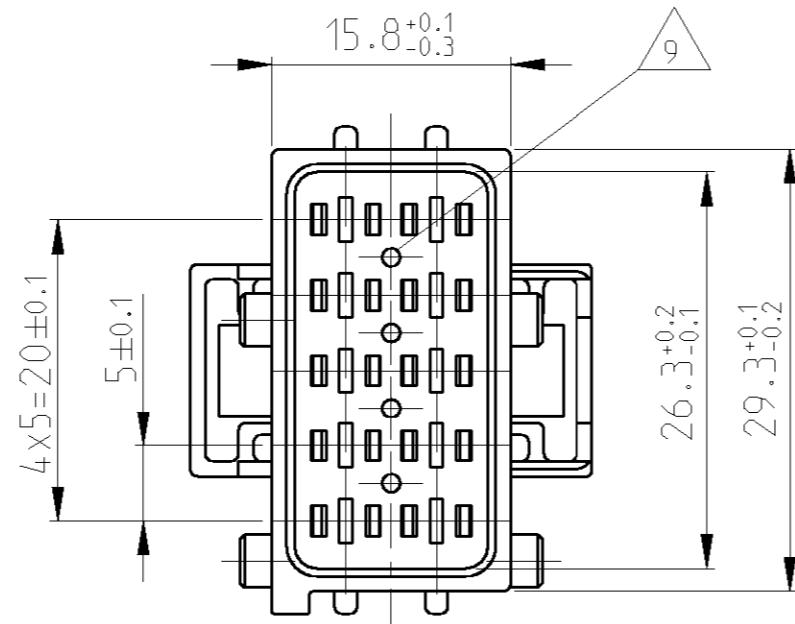
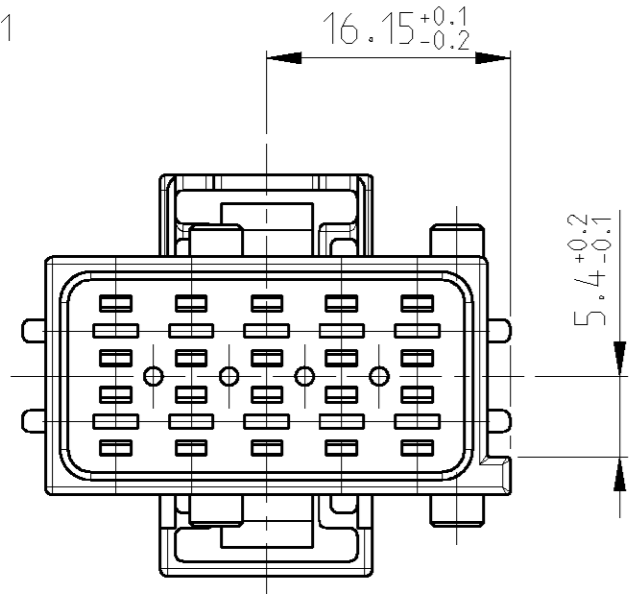
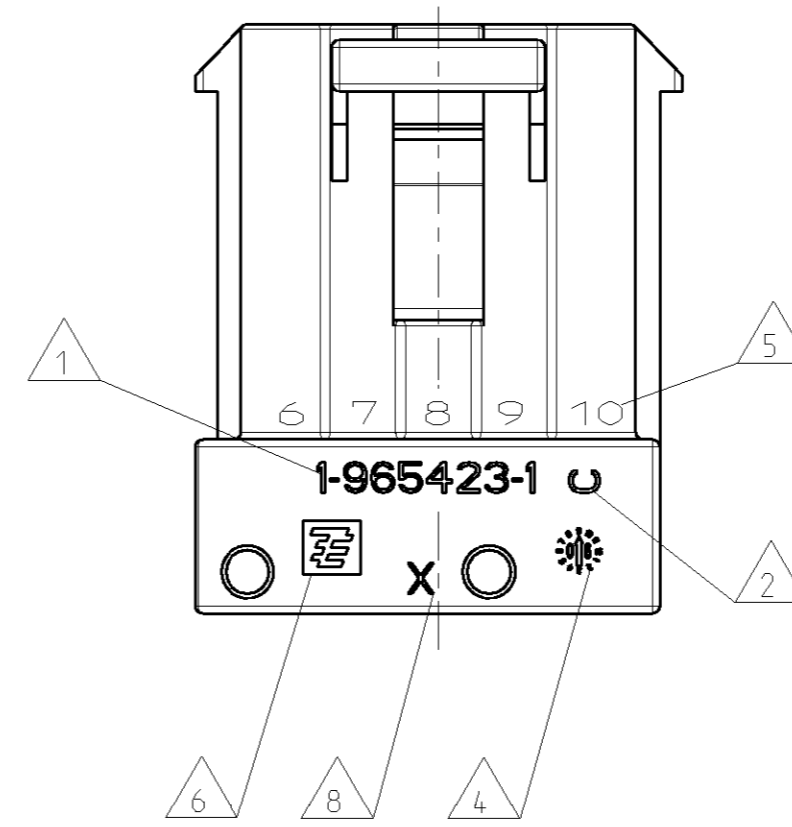
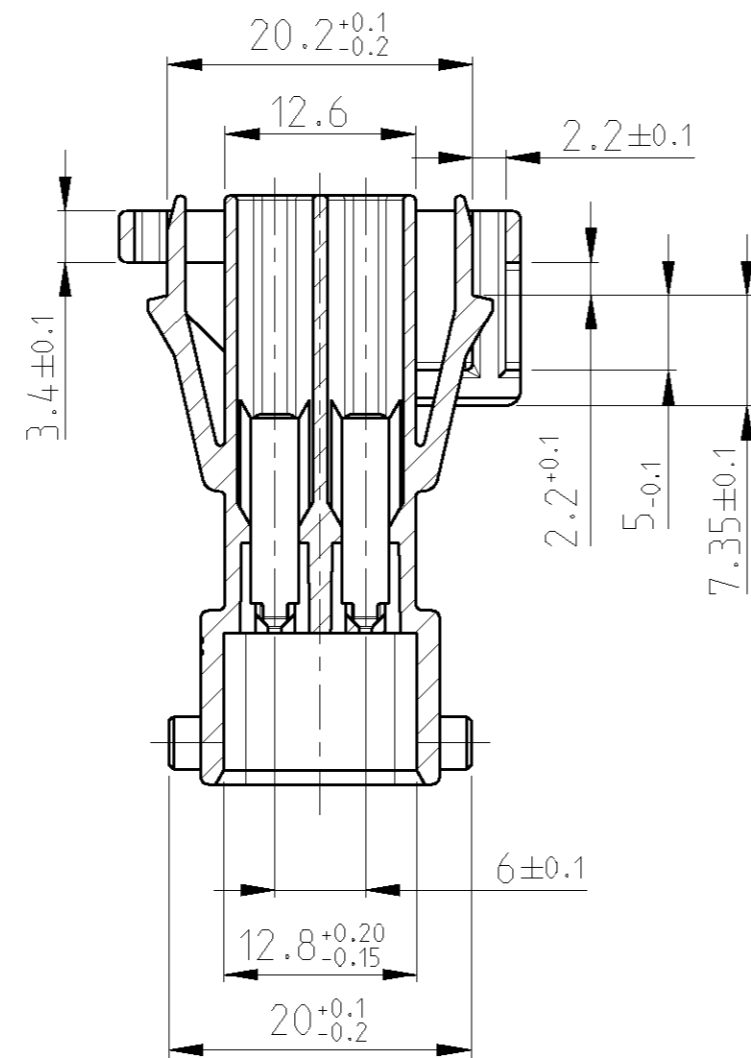


LOC	DIST	REVISIONS					
A1	-	P	LTR	DESCRIPTION	DATE	DWN	APVD
PROJECT NO.		C		SEE E-07-025384	24OCT2007	CA	TK
A93-52217							

CODING A1



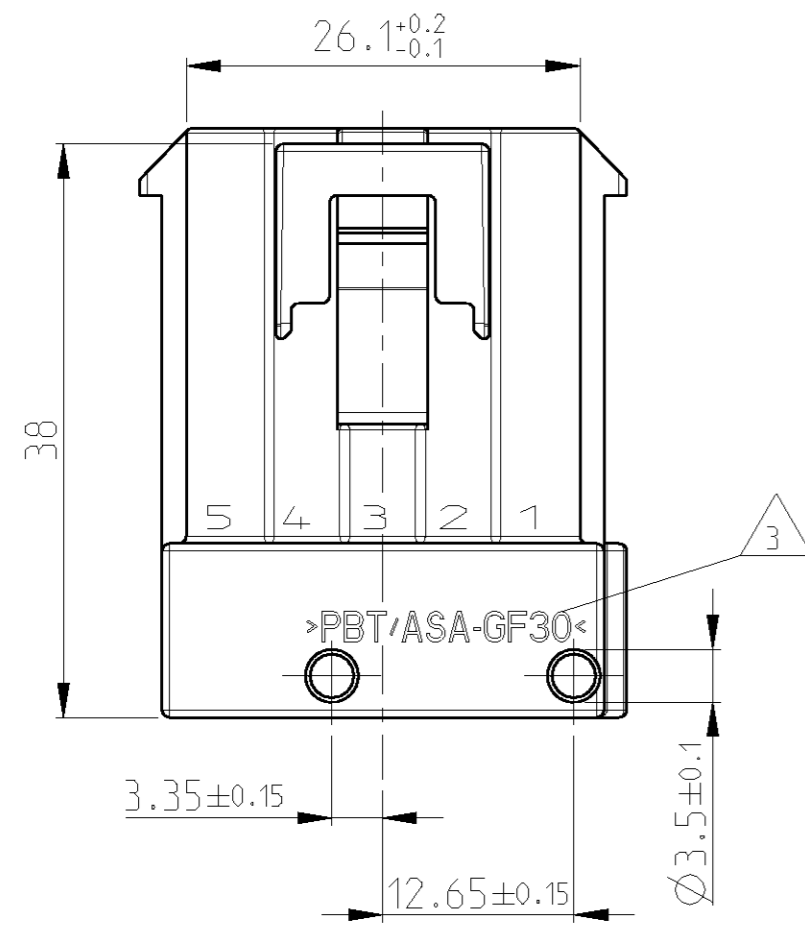
A-A



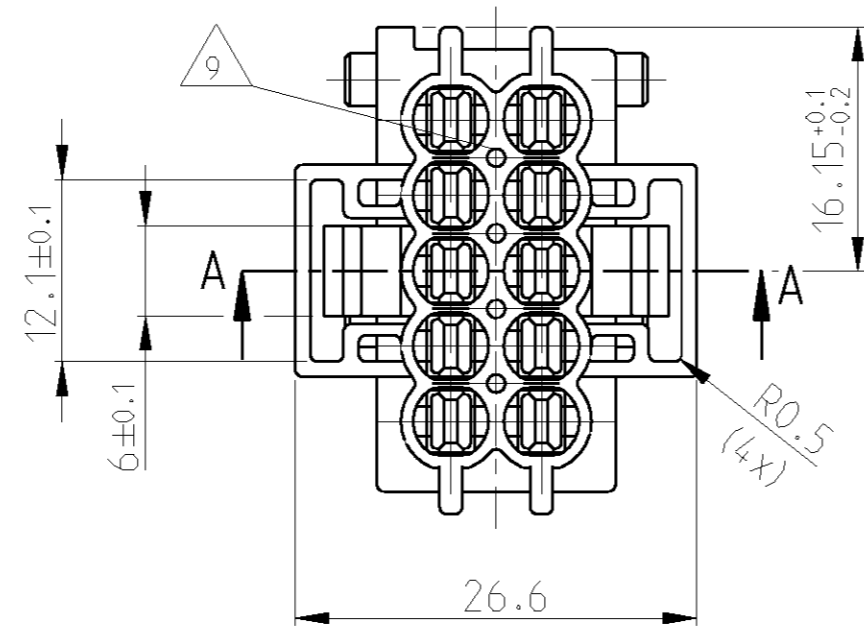
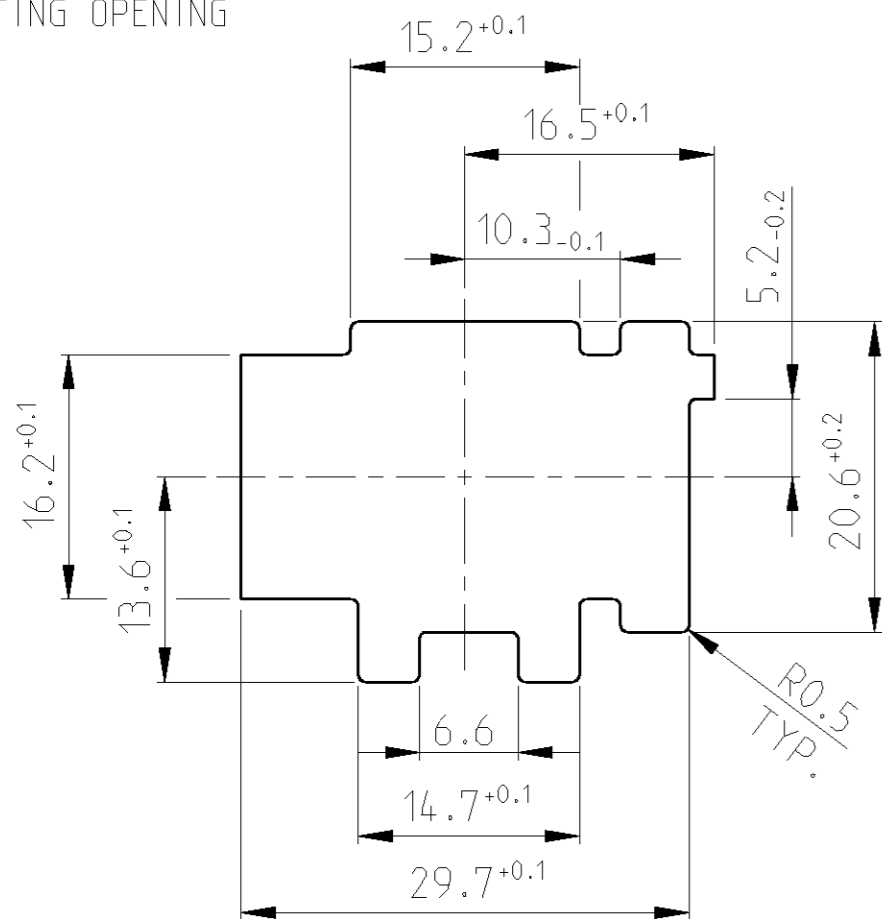
NOTES

BEMERKUNGEN

- NV NOTE NOT VALID
Bemerkung nicht verwendet
- 1 ORDER NUMBER
BESTELL-NUMMER
- 2 REVISION NUMBER
WERKZEUGÄNDERUNGSINDEX
- 3 MATERIAL MARKING
WERKSTOFFKENNZEICHNUNG
- 4 PRODUCTION DATE
PRODUKTIONSdatum
- 5 CONTACT CAVITY NUMBER
KONTAKTKAMMERNUMMER
- 6 TE- LOGO
- 7 PACKAGING: BULK MATERIAL IN CARDBOARD BOX
VERPACKUNG: SCHUETTUTGUT IN KARTON
- 8 TOOL CAVITY MARKING
NESTMARKIERUNG
- 9 OPTIONAL SUIT OF CORES FOR MATERIAL RECESS
Mögliche Materialentnahme



Blechausschnitt
MOUNTING OPENING



USED WITH
967240

1- -1 wie gezeichnet
AS SHOWN

1-965423-1	C	A1	2.8mm Tab-Hsg. 10Pos.	PBT/ASA-GF-30	BLACK	1
TE ORDER NO TE BESTELLNUMMER	REV	CODING	DESCRIPTION NAME	MATERIAL	SURFACE COLOR	ITEM NO

THIS DRAWING IS A CONTROLLED DOCUMENT FOR TYCO ELECTRONICS CORPORATION IT IS SUBJECT TO CHANGE AND THE CONTROLLING ENGINEERING ORGANIZATION SHOULD BE CONTACTED FOR THE LATEST REVISION.		DWN C.Anghel 24OCT2007	Tyco Electronics Tyco Electronics AMP GmbH 64625 Bensheim (Germany)			
DIMENSIONS: mm		CHK T.Kilian 25OCT2007	NAME 2.8mm Messerleiste, 10-polig			
TOLERANCES UNLESS OTHERWISE SPECIFIED:		APVD -	PRODUCT SPEC 108-18102			
0 PLC ±0.3		APPLICATION SPEC 114-18175				
1 PLC ±0.3		SIZE A2				
2 PLC ±0.3		CAGE CODE 00779				
3 PLC ±		DRAWING NO G-965423				
4 PLC ±		RESTRICTED TO -				
ANGLES ±1°		WEIGHT 8.7g				
FINISH		SCALE 2:1				
-		SHEET 1 OF 1				
-		REV C				