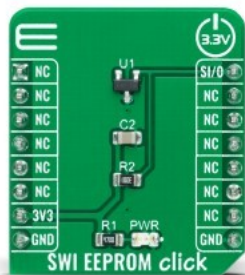


SWI EEPROM Click



PID: MIKROE-4521

SWI EEPROM Click is a compact add-on board that provides a highly reliable memory solution. This board features the [AT21CS01](#), a single-wire serial EEPROM with a unique, factory-programmed 64-bit serial number from [Microchip Technology](#). The AT21CS01 has an ultra-high write endurance capability allowing more than one million cycles for each memory location to meet the requirements for today's high-write endurance applications. It is internally as 128 words of 8 bits each with achieved communication through a single I/O pin with Standard-Speed and High-Speed mode options. Also, it offers a security register with a factory-programmed serial number, which makes it the easiest way to add identification to various accessories and consumables. This Click board™ is suitable for applications where identification or memory storage is required.

SWI EEPROM Click is supported by a [mikroSDK](#) compliant library, which includes functions that simplify software development. This [Click board™](#) comes as a fully tested product, ready to be used on a system equipped with the [mikroBUS™](#) socket.

Mikroe produces entire development toolchains for all major microcontroller architectures.

Committed to excellency, we are dedicated to helping engineers bring the project development up to speed and achieve outstanding results.



ISO 27001: 2013 certification of informational security management system.
ISO 14001: 2015 certification of environmental management system.
OHSAS 18001: 2008 certification of occupational health and safety management system.



ISO 9001: 2015 certification of quality management system (QMS).

Specifications

Type	EEPROM
Applications	Can be used for applications where identification or memory storage is required.
On-board modules	AT21CS01 - 2-pin serial electrically erasable and programmable read-only memory (EEPROM) that harvests energy from the SI/O pin to power the integrated circuit from Microchip Technology
Key Features	High reliability, a unique, factory-programmed 64-bit serial number, ultra-high write endurance, Standard-Speed and High-Speed mode options, and more.
Interface	SWI
Compatibility	mikroBUS
Click board size	S (28.6 x 25.4 mm)
Input Voltage	3.3V

Resources

[mikroBUS™](#)

[mikroSDK](#)

[Click board™ Catalog](#)

[Click Boards™](#)

Downloads

[SWI EEPROM click 2D and 3D files](#)

[AT21CS01 datasheet](#)

[SWI EEPROM click schematic](#)

[SWI EEPROM click example on Libstock](#)

Mikroe produces entire development toolchains for all major microcontroller architectures.

Committed to excellency, we are dedicated to helping engineers bring the project development up to speed and achieve outstanding results.



ISO 27001: 2013 certification of informational security management system.
 ISO 14001: 2015 certification of environmental management system.
 OHSAS 18001: 2008 certification of occupational health and safety management system.



ISO 9001: 2015 certification of quality management system (QMS).