

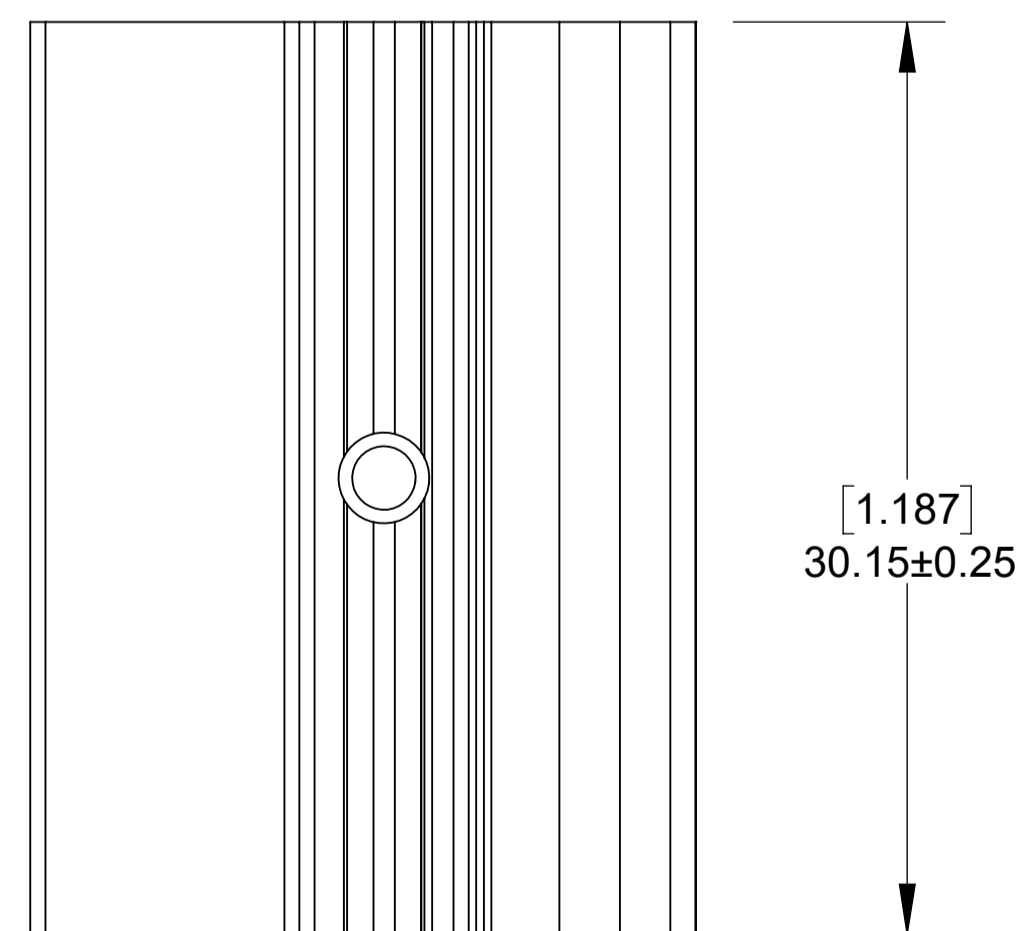
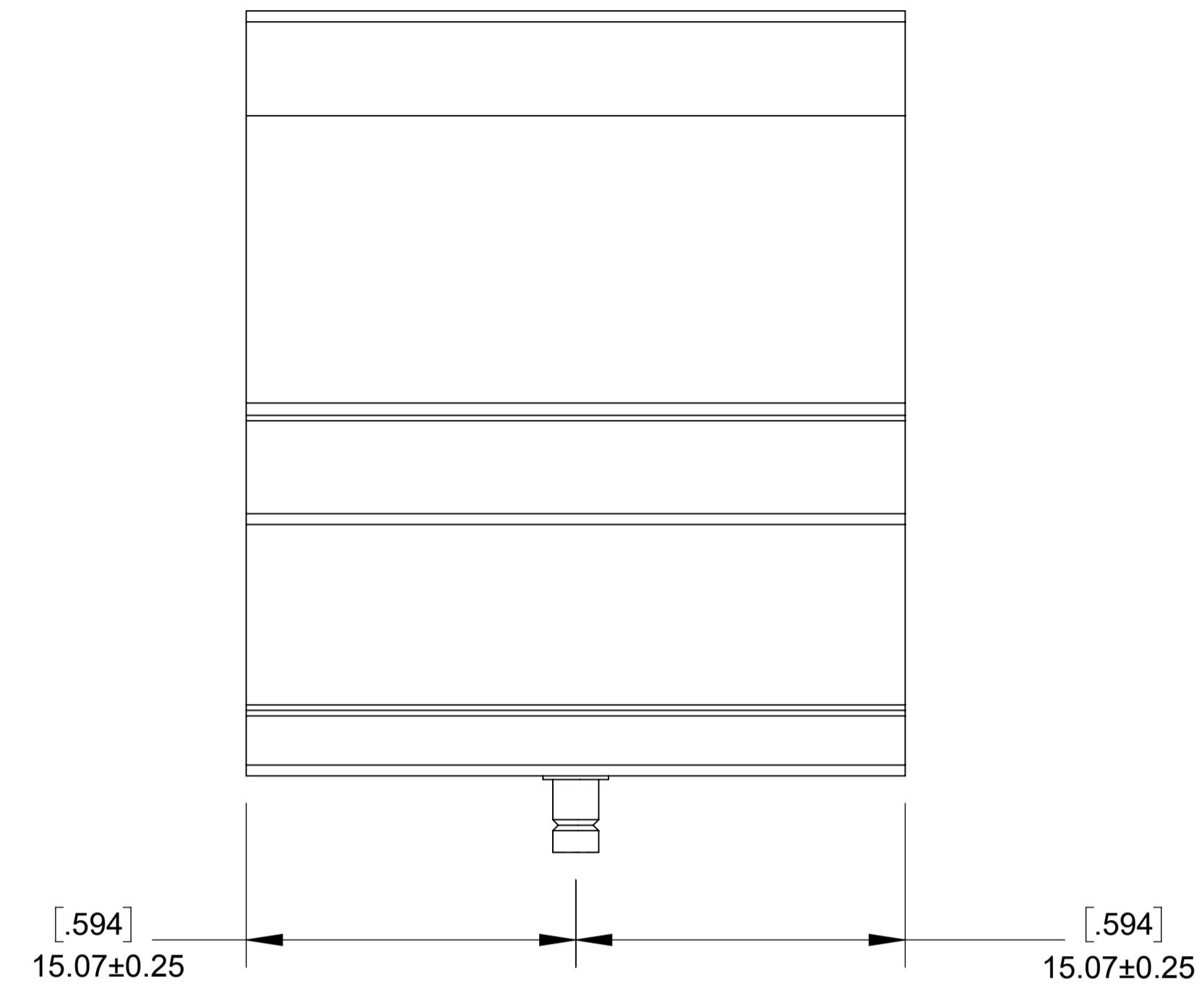
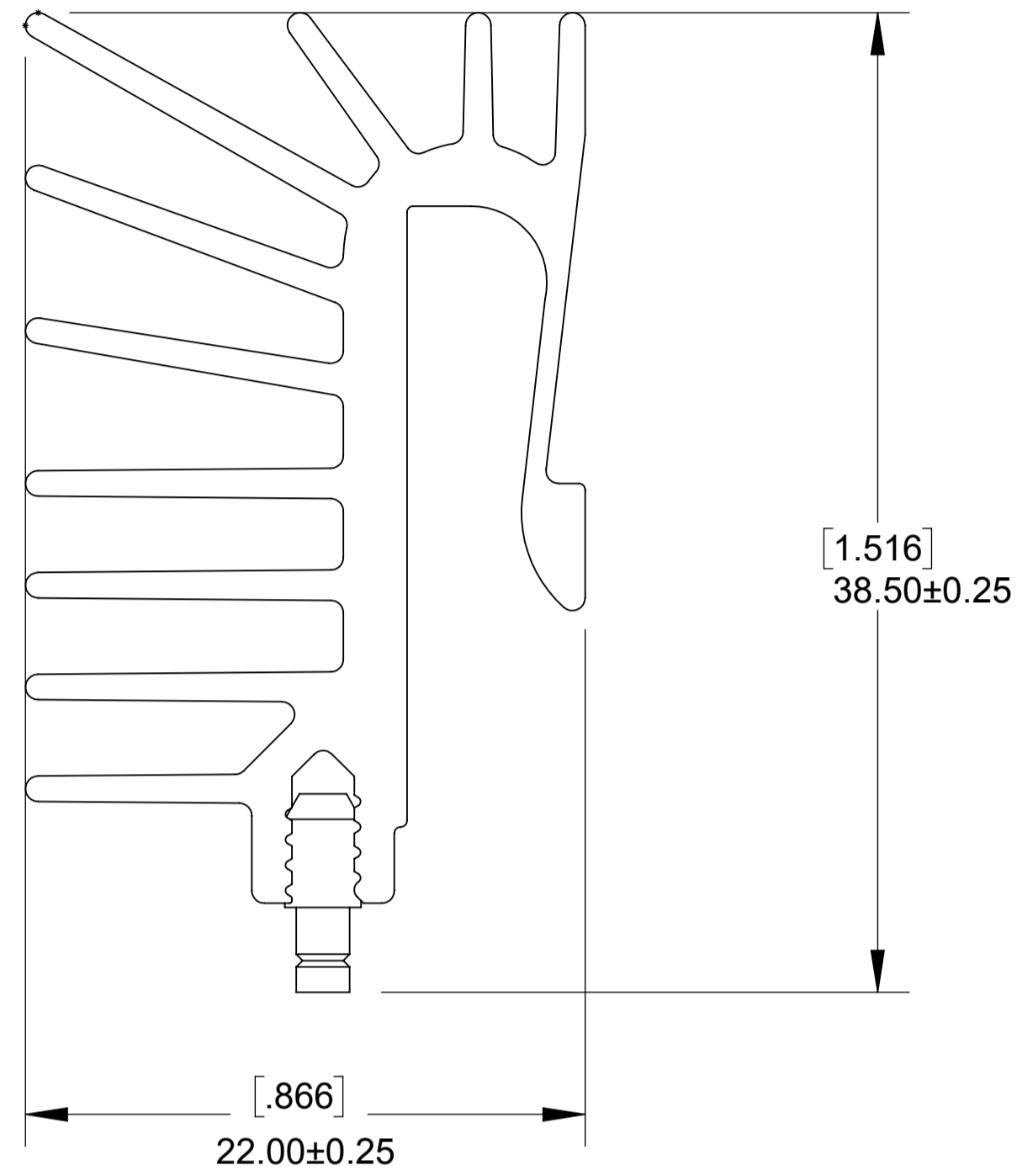
**Aavid Confidential**

THE INFORMATION CONTAINED IN THIS DRAWING IS THE SOLE PROPERTY OF AAVID, A THERMAL DIVISION OF BOYD CORPORATION. ANY REPRODUCTION IN PART OR AS A WHOLE WITHOUT THE WRITTEN PERMISSION OF AAVID, A THERMAL DIVISION OF BOYD CORPORATION IS PROHIBITED.

THIS DRAWING IS CONTROLLED BY A CAD MODEL. IF IN DOUBT, PLEASE ASK.

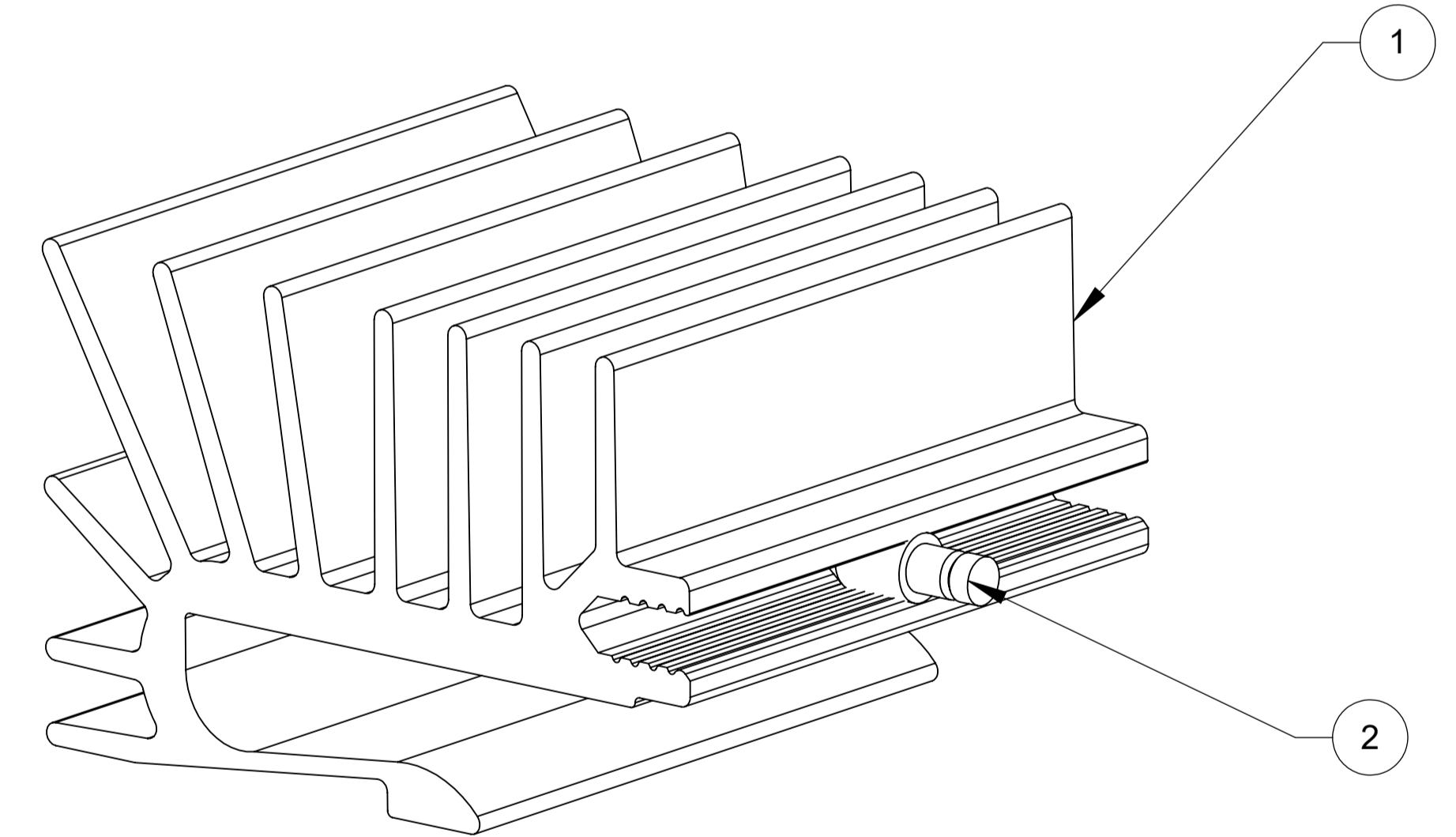
REVISION HISTORY

REV	ZONE	REASON FOR CHANGE	REVISED BY	REV DATE	APPROVED BY	DATE APPROVED
A	-	RELEASE TO PROTOTYPE	Kelly	5/8/2019	Jim	5/9/2019
B	-	CHANGE DESCRIPTION	Sam	9/19/2019	Jim	9/19/2019



NOTES:  
 1.) SEE CAD MODEL.  
 2.) PIN IS CENTERED WITH EXTRUSION WIDTH.

NOTES:  
 1. 未注尺寸公差参考CAD图档  
 2. 钉子居中压进铝挤槽内  
 3. 散热片表面处理: 黑色阳极  
 4. 产品不允许有毛刺、脏污等不良



RoHS COMPLIANT  
 PER AAVID SPEC ROHS - 9000

ITEM NO.	PART NUMBER	DESCRIPTION	QTY.
1	78240	EXTRUSION CUT TO 1.187"	1
2	406060	PIN, SHOULDER, 118X0.307, PLTDG	1

<b>THIRD ANGLE PROJECTION</b> 				1 Aavid Circle, Laconia, NH 03246, USA <a href="http://www.boydcorp.com/aavid">www.boydcorp.com/aavid</a>		DIVISION CODE <b>LC</b>	
PART TYPE IS <b>MACHINED</b> DIMENSIONS ARE IN <b>mm</b> TOLERANCES UNLESS OTHERWISE SPECIFIED X ± 0.380 .X ± 0.250 .XX ± 0.125 Angle 1° REMOVE ALL BURRS BREAK SHARP EDGES .13 - .38 PART TO BE FREE OF DIRT, OIL, OR DEBRIS 0.8 MACHINED SURFACES		DESCRIPTION <b>M48118B011000G</b>				SIZE <b>A1</b>	
DRAWN BY <b>Sam Zeng</b>		DATE <b>9/19/2019</b>		MATERIAL <b>AL6063-T5</b>			
CHECKED BY <b>Jim Liu</b>		DATE <b>9/19/2019</b>		FINISH <b>BLACK ANODIZE</b>			
APPROVED BY <b>Jim Liu</b>		DATE <b>9/19/2019</b>		SHEET 1 of 1		SCALE 1:1	
				PART NUMBER <b>665986</b>		REV <b>B</b>	