

**PLEASE CHECK WWW.MOLEX.COM FOR LATEST PART INFORMATION**

**Part Number:** [1510340012](#)  
**Status:** **Active**  
**Overview:** [EXTreme Guardian System](#)  
**Description:** 11.00mm Pitch EXTreme Guardian Power Receptacle Assembly, 6 AWG, PBT, 2Circuits

**Documents:**

[Drawing \(PDF\)](#) [RoHS Certificate of Compliance \(PDF\)](#)  
[Packaging Specification PK-151034-0001 \(PDF\)](#)

**Agency Certification**

CSA LR19980  
 UL E29179

**General**

Product Family Crimp Housings  
 Series [151034](#)  
 Application Power, Wire-to-Board  
 Overview [EXTreme Guardian System](#)  
 Product Name EXTreme Guardian  
 UPC 887191678467

**Physical**

Circuits (maximum) 2  
 Color - Resin Black  
 Flammability 94V-0  
 Gender Receptacle  
 Glow-Wire Capable No  
 Lock to Mating Part Yes  
 Material - Resin PBT  
 Net Weight 13.116/g  
 Number of Rows 1  
 Packaging Type Tray  
 Panel Mount No  
 Pitch - Mating Interface 11.00mm  
 Temperature Range - Operating -40° to +105°C

**Electrical**

Current - Maximum per Contact 80.0A

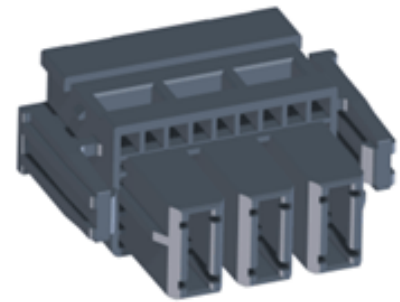
**Solder Process Data**

Lead-freeProcess Capability N/A

**Material Info**

**Reference - Drawing Numbers**

Packaging Specification PK-151034-0001  
 Sales Drawing SD-151034-0001



*Series image - Reference only*

**EU ELV**

**Not Relevant**

**EU RoHS**

**Compliant**

**REACH SVHC**

Not Contained Per -  
 ED/61/2018 (27 June  
 2018)

**Halogen-Free**

**Status**

**Low-Halogen**

**Need more information on product  
 environmental compliance?**

Email [productcompliance@molex.com](mailto:productcompliance@molex.com)  
 Please visit the [Contact Us](#) section for any  
 non-product compliance questions.

China ROHS	Green Image
ELV	Not Relevant
RoHS Phthalates	Not Contained

**Search Parts in this Series**

[151034 Series](#)

**Mates With**

[151035](#) EXTreme Guardian Power Right-  
 Angle PCB Header, [151053](#) EXTreme  
 Guardian Power Vertical PCB Header

**Use With**

[46818](#) Power Harness Crimp Receptacle,  
[151076](#) TPA Clips, [46819](#) High-Power  
 Terminals