



Quality Products. Service Excellence.

Diecast Aluminum Enclosures 1590 Series

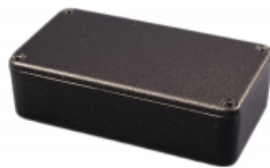
General Purpose, Wall-Mounting, Water-Tight, Colors

Features

- Rugged, diecast aluminum alloy (tough - yet easy to machine), electronic instrument enclosure.
- Lap joint construction provides protection against access of dust and splashing water. Also provides for improved EMI/RFI shielding.
- Unpainted version is vibra finished for a smooth surface with no sharp edges.
- Textured black version is coated with tough polyester powder paint for a lasting finish, even after machining. Black screws are included to enhance appearance.
- Includes screws threaded into factory-tapped holes. Screw type and quantity vary. See details below or in drawings.
- Standard versions are designed to meet IP54.
- Water-tight versions are designed to meet IP65 and include a gasket. Gasket is supplied loose inside the enclosure (not pre-installed).
- Low side wall draft angle (2 degrees or less) for easy P.C. board mounting.



Photo Features



No mounting flanges



Spot-welded bottom flange



Wall-mounting flange integrated into lid.



Lap joint construction where lid and box meet.



Water-tight versions and gasket upgrades available for most sizes.

Hardware

NOTE: 1590 series enclosures feature factory-tapped assembly screw holes that accept machine screws, which are included with the enclosures. Most sizes require four (4) screws. **1590BX**,

1590BX2, 1590D, 1590DD, 1590DE, 1590E, 1590EE & 1590R1 require six (6). **1590F** requires eight (8). See drawings and/or photos for details.

Replacement Hardware



Tamper-proof Hardware Upgrade (Torx w/ Pin)



See "Hardware" table below for compatibility.

Gaskets

NOTE: Gaskets are included with watertight 1590 enclosures. They can also be purchased as a kit if you'd like to upgrade an IP54 enclosure to IP65.



- Each kit includes two pre-formed silicone gaskets.
- Gaskets include adhesive backing for easy installation.
- Allows enclosure to be machined and/or painted first and gasketed later.
- Gasket is applied to the lid.
- Gasket as a temperature rating of -40C to +150C
- Designed to meet IP65 with properly installed gasket and lid screws torqued to 25-30 cN.m (36-43 ozf.in).
- Refer to part number table below for correct gasket.

Notes

- Lid height is 0.16" (4 mm)
- Don't forget to order our watertight screws (stainless steel with o-ring) when converting a standard enclosure to a water-tight box.

Other 1590-Series Enclosures

- Nine of our popular "stomp box" sizes are also available in a variety of colors. See the **1590-STOMP** series for details.
- Three of our popular sizes are also available in **diecast zinc (series 1590K4)**. The zinc alloy is heavy weight, high impact, and easy to machine & plate.
- The **1590-RIBBED** series features internal vertical ribs on the side walls.

Enclosures

No Mounting Flanges		w/ Flanged Lid		w/ Flanged Bottom Plate		Optional Replacement				
Standard Version	Water-Tight Version	Standard Version	Water-Tight Version	Standard Version	Water-Tight Version	Color	Length	Width	Height	Gasket Kit
1590LLB	1590WLLB	1590LLBFL	1590WLLBFL	1590LLBF	1590WLLBF	Natural	1.99	1.99	0.98	1590LBGASKET
1590LLBBK	1590WLLBBK	1590LLBFLBK	1590WLLBFLBK	1590LLBFBK	1590WLLBFBK	Black	1.99	1.99	0.98	1590LBGASKET
1590LB	1590WLB	1590LBFL	1590WLBFL	1590LBF	1590WLBFB	Natural	1.99	1.99	1.22	1590LBGASKET
1590LBK	1590WLBK	1590LBFLBK	1590WLBFLBK	1590LBFBK	1590WLBFBK	Black	1.99	1.99	1.22	1590LBGASKET
1590H	1590WH			1590HF	1590WHF	Natural	2.07	1.50	1.22	1590HGASKET
1590HBK	1590WHBK			1590HFBK	1590WHFBK	Black	2.07	1.50	1.22	1590HGASKET
1590Y	1590WY	1590YFL	1590WYFL	1590YF	1590WYF	Natural	3.62	3.62	1.65	1590YGASKET
1590YBK	1590WYBK	1590YFLBK	1590WYFLBK	1590YFBK	1590WYFBK	Black	3.62	3.62	1.65	1590YGASKET
1590A	1590WA	1590AFL	1590WAF	1590AF	1590WAF	Natural	3.65	1.52	1.22	1590AGASKET

No Mounting Flanges		w/ Flanged Lid		w/ Flanged Bottom Plate		Optional Replacement				
Standard Version	Water-Tight Version	Standard Version	Water-Tight Version	Standard Version	Water-Tight Version	Color	Length	Width	Height	Gasket Kit
1590ABK	1590WABK	1590AFLBK	1590WAFLBK	1590AFBK	1590WAFBK	Black	3.65	1.52	1.22	1590AGASKET
1590ACB						Cobalt Blue	3.65	1.52	1.22	1590AGASKET
1590AGR						Green	3.65	1.52	1.22	1590AGASKET
1590ALG						Light Gray	3.65	1.52	1.22	1590AGASKET
1590AOR						Orange	3.65	1.52	1.22	1590AGASKET
1590APR						Purple	3.65	1.52	1.22	1590AGASKET
1590ARD						Red	3.65	1.52	1.22	1590AGASKET
1590AYL						Yellow	3.65	1.52	1.22	1590AGASKET
1590G	1590WG	1590GFL	1590WGFL	1590GF	1590WGF	Natural	3.94	1.97	1.00	1590GGASKET
1590GBK	1590WGBK	1590GFLBK	1590WGFLBK	1590GFBK	1590WGF BK	Black	3.94	1.97	1.00	1590GGASKET
1590G2	1590WG2	1590G2FL	1590WG2FL	1590G2F	1590WG2F	Natural	3.94	1.97	1.22	1590GGASKET
1590G2BK	1590WG2BK	1590G2FLBK	1590WG2FLBK	1590G2FBK	1590WG2FBK	Black	3.94	1.97	1.22	1590GGASKET
1590G2CB						Cobalt Blue	3.94	1.97	1.22	1590GGASKET
1590G2GR						Green	3.94	1.97	1.22	1590GGASKET
1590G2LG						Light Gray	3.94	1.97	1.22	1590GGASKET
1590G2OR						Orange	3.94	1.97	1.22	1590GGASKET
1590G2PR						Purple	3.94	1.97	1.22	1590GGASKET
1590G2RD						Red	3.94	1.97	1.22	1590GGASKET
1590G2YL						Yellow	3.94	1.97	1.22	1590GGASKET
1590S	1590WS	1590SFL	1590WSFL	1590SF	1590WSF	Natural	4.35	3.24	1.73	1590SGASKET
1590SBK	1590WSBK	1590SFLBK	1590WSFLBK	1590SFBK	1590WSFBK	Black	4.35	3.24	1.73	1590SGASKET
1590B	1590WB	1590BFL	1590WBFL	1590BF	1590WBF	Natural	4.43	2.38	1.22	1590BGASKET
1590BBK	1590WBBK	1590BFLBK	1590WBFLBK	1590BFBK	1590WBFBK	Black	4.43	2.38	1.22	1590BGASKET
1590BCB						Cobalt Blue	4.43	2.38	1.22	1590BGASKET
1590BGR						Green	4.43	2.38	1.22	1590BGASKET
1590BLG						Light Gray	4.43	2.38	1.22	1590BGASKET
1590BOR						Orange	4.43	2.38	1.22	1590BGASKET
1590BPR						Purple	4.43	2.38	1.22	1590BGASKET
1590BRD						Red	4.43	2.38	1.22	1590BGASKET
1590BYL						Yellow	4.43	2.38	1.22	1590BGASKET
1590B2	1590WB2	1590B2FL	1590WB2FL	1590B2F	1590WB2F	Natural	4.43	2.38	1.48	1590BGASKET
1590B2BK	1590WB2BK	1590B2FLBK	1590WB2FLBK	1590B2FBK	1590WB2FBK	Black	4.43	2.38	1.48	1590BGASKET
1590B2CB						Cobalt Blue	4.43	2.38	1.48	1590BGASKET
1590B2GR						Green	4.43	2.38	1.48	1590BGASKET
1590B2LG						Light Gray	4.43	2.38	1.48	1590BGASKET
1590B2OR						Orange	4.43	2.38	1.48	1590BGASKET
1590B2PR						Purple	4.43	2.38	1.48	1590BGASKET
1590B2RD						Red	4.43	2.38	1.48	1590BGASKET
1590B2YL						Yellow	4.43	2.38	1.48	1590BGASKET
1590BS	1590WBS	1590BSFL	1590WBSFL	1590BSF	1590WBSF	Natural	4.41	2.38	1.65	1590BGASKET
1590BSBK	1590WBSBK	1590BSFLBK	1590WBSFLBK	1590BSFBK	1590WBSFBK	Black	4.41	2.38	1.65	1590BGASKET
1590BSCB						Cobalt Blue	4.41	2.38	1.65	1590BGASKET
1590BSGR						Green	4.41	2.38	1.65	1590BGASKET
1590BSLG						Light Gray	4.41	2.38	1.65	1590BGASKET
1590BSOR						Orange	4.41	2.38	1.65	1590BGASKET
1590BSPR						Purple	4.41	2.38	1.65	1590BGASKET
1590BSRD						Red	4.41	2.38	1.65	1590BGASKET
1590BSYL						Yellow	4.41	2.38	1.65	1590BGASKET
1590B3	1590WB3	1590B3FL	1590WB3FL	1590B3F	1590WB3F	Natural	4.57	3.03	1.48	1590B3GASKET
1590B3BK	1590WB3BK	1590B3FLBK	1590WB3FLBK	1590B3FBK	1590WB3FBK	Black	4.57	3.03	1.48	1590B3GASKET
1590B3CB						Cobalt Blue	4.57	3.03	1.48	1590B3GASKET
1590B3GR						Green	4.57	3.03	1.48	1590B3GASKET
1590B3LG						Light Gray	4.57	3.03	1.48	1590B3GASKET
1590B3OR						Orange	4.57	3.03	1.48	1590B3GASKET

No Mounting Flanges		w/ Flanged Lid		w/ Flanged Bottom Plate		Optional Replacement				
Standard Version	Water-Tight Version	Standard Version	Water-Tight Version	Standard Version	Water-Tight Version	Color	Length	Width	Height	Gasket Kit
1590B3PR						Purple	4.57	3.03	1.48	1590B3GASKET
1590B3RD						Red	4.57	3.03	1.48	1590B3GASKET
1590B3YL						Yellow	4.57	3.03	1.48	1590B3GASKET
1590BB	1590WBB	1590BBFL	1590WBBFL	1590BBF	1590WBBF	Natural	4.70	3.70	1.34	1590BBGASKET
1590BBBK	1590WBBBK	1590BBFLBK	1590WBBFLBK	1590BBFBK	1590WBBFBK	Black	4.70	3.70	1.34	1590BBGASKET
1590BBCB						Cobalt Blue	4.70	3.70	1.34	1590BBGASKET
1590BBGR						Green	4.70	3.70	1.34	1590BBGASKET
1590BBLG						Light Gray	4.70	3.70	1.34	1590BBGASKET
1590BBOR						Orange	4.70	3.70	1.34	1590BBGASKET
1590BBPR						Purple	4.70	3.70	1.34	1590BBGASKET
1590BBRD						Red	4.70	3.70	1.34	1590BBGASKET
1590BBYL						Yellow	4.70	3.70	1.34	1590BBGASKET
1590BB2	1590WBB2	1590BB2FL	1590WBB2FL	1590BB2F	1590WBB2F	Natural	4.70	3.70	1.49	1590BBGASKET
1590BB2BK	1590WBB2BK	1590BB2FLBK	1590WBB2FLBK	1590BB2FBK	1590WBB2FBK	Black	4.70	3.70	1.49	1590BBGASKET
1590BB2CB						Cobalt Blue	4.70	3.70	1.49	1590BBGASKET
1590BB2GR						Green	4.70	3.70	1.49	1590BBGASKET
1590BB2LG						Light Gray	4.70	3.70	1.49	1590BBGASKET
1590BB2OR						Orange	4.70	3.70	1.49	1590BBGASKET
1590BB2PR						Purple	4.70	3.70	1.49	1590BBGASKET
1590BB2RD						Red	4.70	3.70	1.49	1590BBGASKET
1590BB2YL						Yellow	4.70	3.70	1.49	1590BBGASKET
1590BBS	1590WBBS	1590BBSFL	1590WBBSFL	1590BBSF	1590WBBSF	Natural	4.70	3.70	1.66	1590BBGASKET
1590BBSBK	1590WBBSBK	1590BBSFLBK	1590WBBSFLBK	1590BBSFBK	1590WBBSFBK	Black	4.70	3.70	1.66	1590BBGASKET
1590BBSCB						Cobalt Blue	4.70	3.70	1.66	1590BBGASKET
1590BBSGR						Green	4.70	3.70	1.66	1590BBGASKET
1590BBSLG						Light Gray	4.70	3.70	1.66	1590BBGASKET
1590BBSOR						Orange	4.70	3.70	1.66	1590BBGASKET
1590BBSPR						Purple	4.70	3.70	1.66	1590BBGASKET
1590BBSRD						Red	4.70	3.70	1.66	1590BBGASKET
1590BBSYL						Yellow	4.70	3.70	1.66	1590BBGASKET
1590Q	1590WQ	1590QFL	1590WQFL	1590QF	1590WQF	Natural	4.72	4.72	1.34	1590QGASKET
1590QBK	1590WQBK	1590QFLBK	1590WQFLBK	1590QFBK	1590WQFBK	Black	4.72	4.72	1.34	1590QGASKET
1590U	1590WU	1590UFL	1590WUFL	1590UF	1590WUF	Natural	4.72	4.72	2.31	1590QGASKET
1590UBK	1590WUBK	1590UFLBK	1590WUFLBK	1590UFBK	1590WUFBK	Black	4.72	4.72	2.32	1590QGASKET
1590V	1590WV	1590VFL	1590WVFL	1590VF	1590WVF	Natural	4.70	4.72	3.69	1590QGASKET
1590VBK	1590WVBK	1590VFLBK	1590WVFLBK	1590VFBK	1590WVFBK	Black	4.70	4.72	3.69	1590QGASKET
1590C	1590WC	1590CFL	1590WCFL	1590CF	1590WCF	Natural	4.70	3.70	2.22	1590BBGASKET
1590CBK	1590WCBK	1590CFLBK	1590WCFLBK	1590CFBK	1590WCFBK	Black	4.70	3.70	2.22	1590BBGASKET
1590T	1590WT	1590TFL	1590WTFL	1590TF	1590WTF	Natural	4.72	3.15	2.32	1590TGASKET
1590TBK	1590WTBK	1590TFLBK	1590WTFLBK	1590TFBK	1590WTFBK	Black	4.72	3.15	2.32	1590TGASKET
1590CE	1590WCE					Natural	4.74	3.95	2.54	1590CEGASKET
1590CEBK	1590WCEBK					Black	4.74	3.95	2.54	1590CEGASKET
1590N1	1590WN1	1590N1FL	1590WN1FL	1590N1F	1590WN1F	Natural	4.77	2.58	1.57	1590NGASKET
1590N1BK	1590WN1BK	1590N1FLBK	1590WN1FLBK	1590N1FBK	1590WN1FBK	Black	4.77	2.58	1.57	1590NGASKET
1590KK	1590WKK	1590KKFL	1590WKKFL	1590KKF	1590WKKF	Natural	4.91	4.91	2.24	1590KGASKET
1590KKBK	1590WKKBK	1590KKFLBK	1590WKKFLBK	1590KKFBK	1590WKKFBK	Black	4.91	4.91	2.24	1590KGASKET
1590K	1590WK			1590KF	1590WKF	Natural	4.92	4.92	3.11	1590KGASKET
1590KBK	1590WKBK			1590KFBK	1590WKFBK	Black	4.92	4.92	3.11	1590KGASKET
1590J	1590WJ			1590JF	1590WJF	Natural	5.71	3.74	1.93	1590JGASKET
1590JBK	1590WJBK			1590JFBK	1590WJFBK	Black	5.71	3.74	1.93	1590JGASKET
1590XX	1590WXX	1590XXFL	1590WXXFL			Natural	5.72	4.77	1.55	1590XGASKET
1590XXBK	1590WXXBK	1590XXFLBK	1590WXXFLBK			Black	5.72	4.77	1.55	1590XGASKET
1590XXCB						Cobalt Blue	5.72	4.77	1.55	1590XGASKET

No Mounting Flanges		w/ Flanged Lid		w/ Flanged Bottom Plate		Optional Replacement				
Standard Version	Water-Tight Version	Standard Version	Water-Tight Version	Standard Version	Water-Tight Version	Color	Length	Width	Height	Gasket Kit
1590XXGR						Green	5.72	4.77	1.55	1590XGASKET
1590XXLG						Light Gray	5.72	4.77	1.55	1590XGASKET
1590XXOR						Orange	5.72	4.77	1.55	1590XGASKET
1590XXPR						Purple	5.72	4.77	1.55	1590XGASKET
1590XXRD						Red	5.72	4.77	1.55	1590XGASKET
1590XXYL						Yellow	5.72	4.77	1.55	1590XGASKET
1590X	1590WX	1590XFL	1590WXFL			Natural	5.72	4.77	2.22	1590XGASKET
1590XBK	1590WXBK	1590XFLBK	1590WXFLBK			Black	5.72	4.77	2.22	1590XGASKET
1590P1	1590WP1	1590P1FL	1590WP1FL	1590P1F	1590WP1F	Natural	6.02	3.27	1.98	1590PGASKET
1590P1BK	1590WP1BK	1590P1FLBK	1590WP1FLBK	1590P1FBK	1590WP1FBK	Black	6.02	3.27	1.98	1590PGASKET
1590D	1590WD	1590DFL	1590WDFL	1590DF	1590WDF	Natural	7.39	4.70	2.20	1590EGASKET
1590DBK	1590WDBK	1590DFLBK	1590WDFLBK	1590DFBK	1590WDFBK	Black	7.39	4.70	2.20	1590EGASKET
1590DD	1590WDD	1590DDFL	1590WDDFL	1590DDF	1590WDDF	Natural	7.40	4.72	1.46	1590EGASKET
1590DDBK	1590WDDBK	1590DDFLBK	1590WDDFLBK	1590DDFBK	1590WDDFBK	Black	7.40	4.72	1.46	1590EGASKET
1590E	1590WE	1590EFL	1590WEFL	1590EF	1590WEF	Natural	7.40	4.72	3.23	1590EGASKET
1590EBK	1590WEBK	1590EFLBK	1590WEFLBK	1590EFBK	1590WEFBK	Black	7.40	4.72	3.23	1590EGASKET
1590F	1590WF	1590FFL	1590WFFL	1590FF	1590WFF	Natural	7.40	7.40	2.64	1590FGASKET
1590FBK	1590WFBK	1590FFLBK	1590WFFLBK	1590FFBK	1590WFFBK	Black	7.40	7.40	2.64	1590FGASKET
1590R1	1590WR1	1590R1FL	1590WR1FL	1590R1F	1590WR1F	Natural	7.55	4.39	2.40	1590RGASKET
1590R1BK	1590WR1BK	1590R1FLBK	1590WR1FLBK	1590R1FBK	1590WR1FBK	Black	7.55	4.39	2.40	1590RGASKET
1590DE	1590WDE					Natural	7.88	4.73	2.53	1590DEGASKET
1590DEBK	1590WDEBK					Black	7.88	4.73	2.53	1590DEGASKET
1590EE	1590WEE					Natural	7.88	4.73	3.33	1590DEGASKET
1590EEBK	1590WEEBK					Black	7.88	4.73	3.33	1590DEGASKET
1590BX2	1590WBX2	1590BX2FL	1590WBX2FL	1590BX2F	1590WBX2F	Natural	10.00	2.76	1.36	1590BXGASKET
1590BX2BK	1590WBX2BK	1590BX2FLBK	1590WBX2FLBK	1590BX2FBK	1590WBX2FBK	Black	10.00	2.76	1.36	1590BXGASKET
1590BX	1590WBX	1590BXFL	1590WBXFL	1590BXF	1590WBXF	Natural	10.00	2.76	1.95	1590BXGASKET
1590BXBK	1590WBXBK	1590BXFLBK	1590WBXFLBK	1590BXFBK	1590WBXFBK	Black	10.00	2.76	1.95	1590BXGASKET

NOTE: Lid height is 0.16" (4 mm)

Replacement or Upgrade Hardware Packs

Size	Philips Head Machine Screws (100 or 50-packs)				Torx with Pin Tamper-Resistant Screws (50-packs)				
	Natural	Black	Water Tight	Water-Tight Black	Natural	Black	Water Tight	Water-Tight Black	Screwdriver Bit
1590LLB	1590MS100	1590MS50BK	1590WMS100	1590WMS100BK	1590MS50T	1590MS50TBK	1590WMS50T	1590WMS50TBK	SCDRIVET10-2
1590LB	1590MS100	1590MS50BK	1590WMS100	1590WMS100BK	1590MS50T	1590MS50TBK	1590WMS50T	1590WMS50TBK	SCDRIVET10-2
1590H	1590MS100	1590MS50BK	1590WMS100	1590WMS100BK	1590MS50T	1590MS50TBK	1590WMS50T	1590WMS50TBK	SCDRIVET10-2
1590Y	1590MS100	1590MS50BK	1590WMS100	1590WMS100BK	1590MS50T	1590MS50TBK	1590WMS50T	1590WMS50TBK	SCDRIVET10-2
1590A	1590MS100	1590MS50BK	1590WMS100	1590WMS100BK	1590MS50T	1590MS50TBK	1590WMS50T	1590WMS50TBK	SCDRIVET10-2
1590G	1590MS100	1590MS50BK	1590WMS100	1590WMS100BK	1590MS50T	1590MS50TBK	1590WMS50T	1590WMS50TBK	SCDRIVET10-2
1590G2	1590MS100	1590MS50BK	1590WMS100	1590WMS100BK	1590MS50T	1590MS50TBK	1590WMS50T	1590WMS50TBK	SCDRIVET10-2
1590S	1590MS100	1590MS50BK	1590WMS100	1590WMS100BK	1590MS50T	1590MS50TBK	1590WMS50T	1590WMS50TBK	SCDRIVET10-2
1590B	1590MS100	1590MS50BK	1590WMS100	1590WMS100BK	1590MS50T	1590MS50TBK	1590WMS50T	1590WMS50TBK	SCDRIVET10-2
1590B2	1590MS100	1590MS50BK	1590WMS100	1590WMS100BK	1590MS50T	1590MS50TBK	1590WMS50T	1590WMS50TBK	SCDRIVET10-2
1590BS	1590MS100	1590MS50BK	1590WMS100	1590WMS100BK	1590MS50T	1590MS50TBK	1590WMS50T	1590WMS50TBK	SCDRIVET10-2
1590B3	1590MS100	1590MS50BK	1590WMS100	1590WMS100BK	1590MS50T	1590MS50TBK	1590WMS50T	1590WMS50TBK	SCDRIVET10-2
1590BB	1590MS100	1590MS50BK	1590WMS100	1590WMS100BK	1590MS50T	1590MS50TBK	1590WMS50T	1590WMS50TBK	SCDRIVET10-2
1590BB2	1590MS100	1590MS50BK	1590WMS100	1590WMS100BK	1590MS50T	1590MS50TBK	1590WMS50T	1590WMS50TBK	SCDRIVET10-2
1590BBS	1590MS100	1590MS50BK	1590WMS100	1590WMS100BK	1590MS50T	1590MS50TBK	1590WMS50T	1590WMS50TBK	SCDRIVET10-2
1590Q	1590MS100	1590MS50BK	1590WMS100	1590WMS100BK	1590MS50T	1590MS50TBK	1590WMS50T	1590WMS50TBK	SCDRIVET10-2
1590U	1590MS100	1590MS50BK	1590WMS100	1590WMS100BK	1590MS50T	1590MS50TBK	1590WMS50T	1590WMS50TBK	SCDRIVET10-2
1590V	1590MS100	1590MS50BK	1590WMS100	1590WMS100BK	1590MS50T	1590MS50TBK	1590WMS50T	1590WMS50TBK	SCDRIVET10-2
1590C	1590MS100	1590MS50BK	1590WMS100	1590WMS100BK	1590MS50T	1590MS50TBK	1590WMS50T	1590WMS50TBK	SCDRIVET10-2

Size	Philips Head Machine Screws (100 or 50-packs)				Torx with Pin Tamper-Resistant Screws (50-packs)				
	Natural	Black	Water Tight	Water-Tight Black	Natural	Black	Water Tight	Water-Tight Black	Screwdriver Bit
1590T	1590MS100	1590MS50BK	1590WMS100	1590WMS100BK	1590MS50T	1590MS50TBK	1590WMS50T	1590WMS50TBK	SCDRIVET10-2
1590CE	1550MS100	1550MS100BK	1550WMS100	1550WMS100BK	1550MS50T	1550MS50TBK	1550WMS50T	1550WMS50TBK	SCDRIVET15-2
1590N1	1590MS100	1590MS50BK	1590WMS100	1590WMS100BK	1590MS50T	1590MS50TBK	1590WMS50T	1590WMS50TBK	SCDRIVET10-2
1590KK	1590MS100	1590MS50BK	1590WMS100	1590WMS100BK	1590MS50T	1590MS50TBK	1590WMS50T	1590WMS50TBK	SCDRIVET10-2
1590K	1590MS100	1590MS50BK	1590WMS100	1590WMS100BK	1590MS50T	1590MS50TBK	1590WMS50T	1590WMS50TBK	SCDRIVET10-2
1590J	1590MS100	1590MS50BK	1590WMS100	1590WMS100BK	1590MS50T	1590MS50TBK	1590WMS50T	1590WMS50TBK	SCDRIVET10-2
1590XX	1590MS100	1590MS50BK	1590WMS100	1590WMS100BK	1590MS50T	1590MS50TBK	1590WMS50T	1590WMS50TBK	SCDRIVET10-2
1590X	1590MS100	1590MS50BK	1590WMS100	1590WMS100BK	1590MS50T	1590MS50TBK	1590WMS50T	1590WMS50TBK	SCDRIVET10-2
1590P1	1590MS100	1590MS50BK	1590WMS100	1590WMS100BK	1590MS50T	1590MS50TBK	1590WMS50T	1590WMS50TBK	SCDRIVET10-2
1590DD	1590MS100	1590MS50BK	1590WMS100	1590WMS100BK	1590MS50T	1590MS50TBK	1590WMS50T	1590WMS50TBK	SCDRIVET10-2
1590D	1590MS100	1590MS50BK	1590WMS100	1590WMS100BK	1590MS50T	1590MS50TBK	1590WMS50T	1590WMS50TBK	SCDRIVET10-2
1590E	1590MS100	1590MS50BK	1590WMS100	1590WMS100BK	1590MS50T	1590MS50TBK	1590WMS50T	1590WMS50TBK	SCDRIVET10-2
1590F	1590MS100	1590MS50BK	1590WMS100	1590WMS100BK	1590MS50T	1590MS50TBK	1590WMS50T	1590WMS50TBK	SCDRIVET10-2
1590R1	1590MS100	1590MS50BK	1590WMS100	1590WMS100BK	1590MS50T	1590MS50TBK	1590WMS50T	1590WMS50TBK	SCDRIVET10-2
1590DE	1550MS100	1550MS100BK	1550WMS100	1550WMS100BK	1550MS50T	1550MS50TBK	1550WMS50T	1550WMS50TBK	SCDRIVET15-2
1590EE	1550MS100	1550MS100BK	1550WMS100	1550WMS100BK	1550MS50T	1550MS50TBK	1550WMS50T	1550WMS50TBK	SCDRIVET15-2
1590BX2	1590MS100	1590MS50BK	1590WMS100	1590WMS100BK	1590MS50T	1590MS50TBK	1590WMS50T	1590WMS50TBK	SCDRIVET10-2
1590BX	1590MS100	1590MS50BK	1590WMS100	1590WMS100BK	1590MS50T	1590MS50TBK	1590WMS50T	1590WMS50TBK	SCDRIVET10-2

Tags: **diecast, electronic, pedal, board enclosure, stomp box, project box, flanged, bottom flange, flanged lid, watertight** *Data subject to change without notice*

© 2023. Hammond Manufacturing Ltd. All rights reserved.