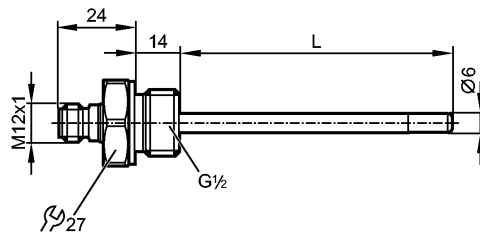


TM4411

TM-050KFBR12- /US/

Temperature sensors



Product characteristics

Temperature sensor for connection to a control monitor with a max. operating voltage of 32 V

Quick disconnect

Process connection: G 1/2

Installation length EL: 50 mm

gold-plated contacts

Connection to control monitor TP / TR

Measuring range: -40...150 °C / -40...302 °F

Measuring element: 1 x Pt 100, to DIN EN 60751, class A

Application

Application	liquids and gases
Pressure rating [bar]	250
Minimum installation depth [mm]	15

Electrical data

Connection to control monitor	TP / TR
Protection class	III

Measuring / setting range

Measuring range	-40...150 °C	-40...302 °F
-----------------	--------------	--------------

Accuracy / deviations

Accuracy	± (0.15 K + 0.002 x t)
----------	--------------------------

Reaction times

Dynamic response T05 / T09 [s]	1 / 3 *)
--------------------------------	----------

Environment

Ambient temperature [°C]	-25...80
Storage temperature [°C]	-40...100
Protection	IP 68 / IP 69K

Tests / approvals

Shock resistance	DIN EN 60068-2-2-27:	50 g (11 ms)
Vibration resistance	DIN EN 60068-2-6	10 g (10...2000 Hz)
MTTF [Years]		22831

Mechanical data

Process connection	G 1/2
Materials (wetted parts)	stainless steel 316L / 1.4404; FPM (Viton)
Probe diameter [mm]	6
Probe length L [mm]	36
Installation length EL [mm]	50
Housing materials	stainless steel 316L / 1.4404

TM4411

TM-050KFBR12- /US/

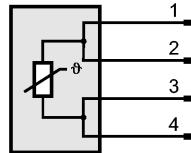
Temperature sensors

Weight	[kg]	0.122
--------	------	-------

Electrical connection

Connection	M12 connector; gold-plated contacts
------------	-------------------------------------

Wiring



Remarks

Remarks	<p>cULus - Class 2 source required *) according to DIN EN 60751 The values for accuracy apply to flowing water.</p>
---------	---

Pack quantity	[piece]	1
---------------	---------	---