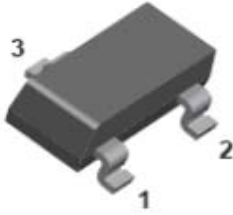
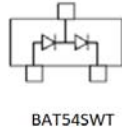
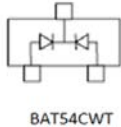
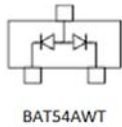
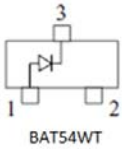


## Schottky Barrier Diode



### Features

- Epoxy meets UL-94 V-0 flammability rating
- Moisture Sensitivity Level 1
- Low Forward Voltage
- Surface Mount device



### Mechanical Data

- **Package:** SOT-323
- **Terminals:** Tin plated leads, solderable per J-STD-002 and JESD22-B102
- **Marking:**

BAT54WT	KL5
BAT54AWT	KL6
BAT54CWT	KL7
BAT54SWT	KL8

### ■ Maximum Ratings ( $T_A=25^\circ\text{C}$ Unless otherwise specified)

Item	Symbol	Unit	Value
Continuous Reverse Voltage	$V_R$	V	30
Forward Continuous Current	$I_F$	mA	200
Non-Repetitive Peak Forward Surge Current @ $t < 1\text{s}$	$I_{FSM}$	A	0.6
Total Power Dissipation @ $T_A=25^\circ\text{C}$	$P_D$	mW	200
Thermal Resistance, Junction to Ambient	$R_{thJA}$	$^\circ\text{C}/\text{W}$	500
Operation Junction Temperature	$T_J$	$^\circ\text{C}$	-55 to +125
Storage Temperature	$T_{STG}$	$^\circ\text{C}$	-55 to +125

### ■ Ordering Information (Example)

PREFERRED P/N	PACKING CODE	UNIT WEIGHT(g)	MINIMUM PACKAGE(pcs)	INNER BOX QUANTITY(pcs)	OUTER CARTON QUANTITY(pcs)	DELIVERY MODE
BAT54WT	F2	Approximate 0.005	3000	30000	120000	7" reel
BAT54AWT	F2	Approximate 0.005	3000	30000	120000	7" reel
BAT54CWT	F2	Approximate 0.005	3000	30000	120000	7" reel
BAT54SWT	F2	Approximate 0.005	3000	30000	120000	7" reel

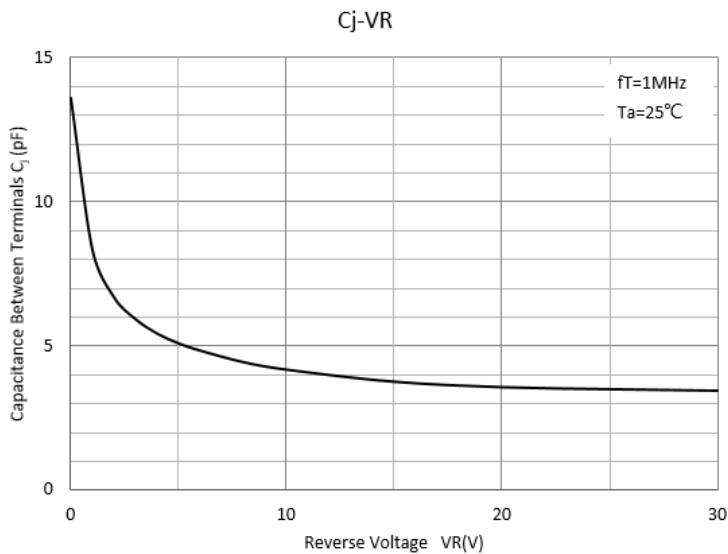
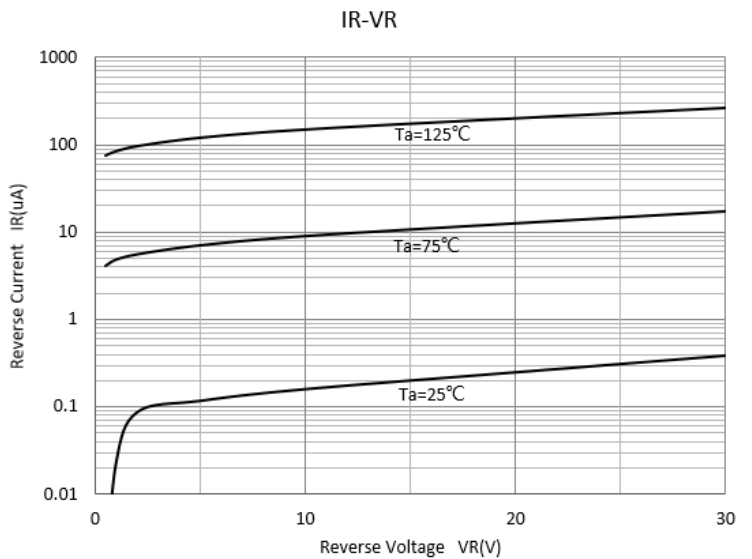
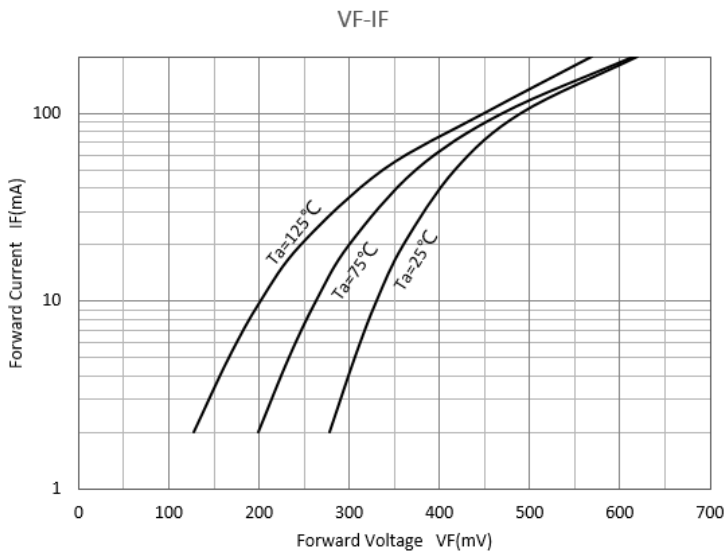


# BAT54WT THRU BAT54SWT

## ■ Electrical Characteristics (Ta=25°C Unless otherwise specified)

Item	Symbol	Unit	Conditions	Value
Maximum Instantaneous Forward Voltage	$V_F$	V	$I_{FM}=0.1mA$	0.24
			$I_{FM}=1mA$	0.32
			$I_{FM}=10mA$	0.4
			$I_{FM}=30mA$	0.5
			$I_{FM}=100mA$	1
Maximum DC Reverse Current	$I_R$	$\mu A$	$V_R=25V$	2
Typical Junction Capacitance	$C_J$	pF	$f=1.0MHz, V_R=1.0V$	10
Maximum Reverse Recovery Time	$T_{rr}$	ns	$I_F=I_R=10mA$ $I_{rr}=0.1 \cdot I_R, R_L=100\Omega$	5

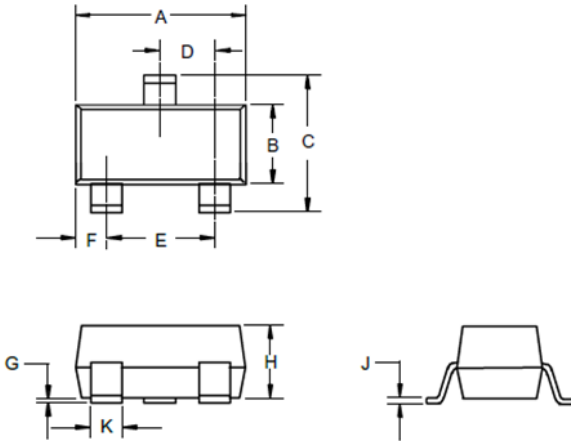
## ■ Typical Characteristics





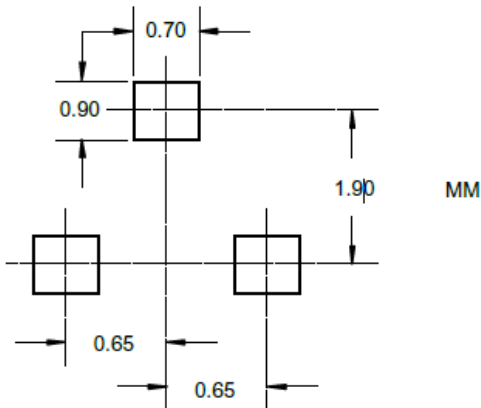
# BAT54WT THRU BAT54SWT

## ■ SOT-323 Package Outline Dimensions



DIMENSIONS					
DIM	INCHES		MM		NOTE
	MIN	MAX	MIN	MAX	
A	.071	.087	1.80	2.20	
B	.045	.053	1.15	1.35	
C	.083	.096	2.10	2.45	
D	.026 Nominal		0.65Nominal		
E	.047	.055	1.20	1.40	
F	.012	.016	.30	.40	
G	.000	.004	.000	.100	
H	.035	.039	.90	1.00	
J	.004	.010	.100	.250	
K	.006	.016	.15	.40	

## ■ SOT-323 Suggested Pad Layout





## BAT54WT THRU BAT54SWT

---

### Disclaimer

The information presented in this document is for reference only. Yangzhou Yangjie Electronic Technology Co., Ltd. reserves the right to make changes without notice for the specification of the products displayed herein to improve reliability, function or design or otherwise.

The product listed herein is designed to be used with ordinary electronic equipment or devices, and not designed to be used with equipment or devices which require high level of reliability and the malfunction of which would directly endanger human life (such as medical instruments, transportation equipment, aerospace machinery, nuclear-reactor controllers, fuel controllers and other safety devices), Yangjie or anyone on its behalf, assumes no responsibility or liability for any damages resulting from such improper use of sale.

This publication supersedes & replaces all information previously supplied. For additional information, please visit our website [http:// www.21yangjie.com](http://www.21yangjie.com) , or consult your nearest Yangjie's sales office for further assistance.