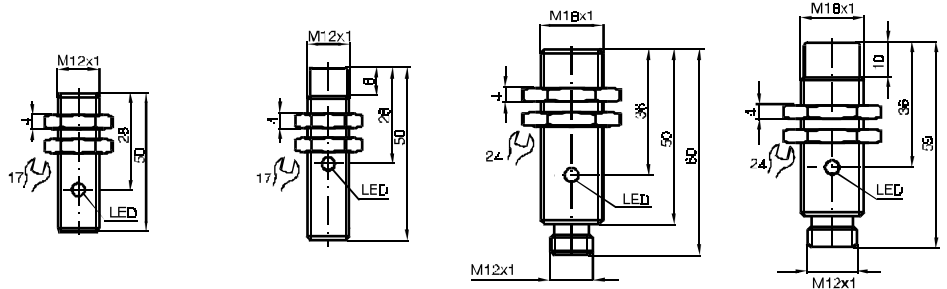


Cylindrical Type

DC

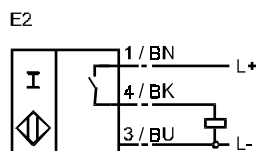
3-wire

For use in A.C. and D.C. welding fields  
 2 mm embeddable  
 4 mm not embed.  
 5 mm embeddable  
 8 mm not embed.



Operating dist. s <sub>n</sub> , mounting	2 mm, embeddable	4 mm, not embedd.	5 mm, embeddable	8 mm, not embedd.
PNP	Make function	NJ2-12GM40-E2-C-V1	NJ4-12GM40-E2-C-V1	NJ5-18GM50-E2-C-V1
	Break function			
NPN	Make function			
	Break function			
Assured operat. dist. s <sub>a</sub> [mm]	0 ... 1,62	0 ... 3,24	0 ... 4,05	0 ... 6,48
Reduction factor	r <sub>V2A</sub>	0,65	0,75	0,65
	r <sub>AI</sub>	0,2	0,38	0,25
	r <sub>Cu</sub>	0,15	0,35	0,2
Operating voltage U <sub>B</sub> [V]	10 ... 60	10 ... 60	10 ... 60	10 ... 60
Operational current I <sub>L</sub> [mA]	200	200	400	400
Switching frequency [Hz]	500	400	200	100
No-load supply current [mA]	15	15	15	15
Voltage drop [V]	3	3	3	3
Constant magn. field [mT]	350	250	250	200
Alternating magn. field [mT]	350	200	200	100
Short circuit protection	pulsing	pulsing	pulsing	pulsing
Reverse polarity protection	yes	yes	yes	yes
Output indicator	LED, yellow	LED, yellow	LED, yellow	LED, yellow
Operating temperature [°C]	-25 ... 70	-25 ... 70	-25 ... 70	-25 ... 70
In compliance with	EN60947-5-2	EN60947-5-2	EN60947-5-2	EN60947-5-2
Protection to DIN 40050	IP 67	IP 65	IP 67	IP 67
Connection	V1- connector	V1- connector	V1- connector	V1- connector
Conductor cross section	-	-	-	-
Housing material	Brass, teflon coated	Brass, teflon coated	Brass, teflon coated	Brass, teflon coated
Sensing face	PPS	PPS	PPS	PPS

Standard symbol / connection



Inductive sensors