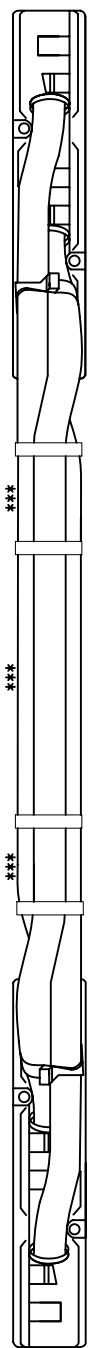
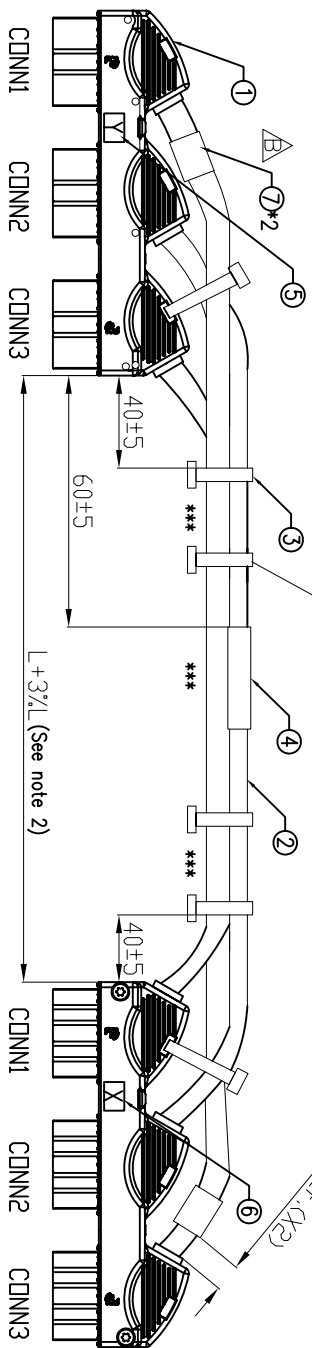


CUSTOMER P/N	AFCI P/N	L(M)
/	10139824-N030YLLF	0.3
CAB1071	10139824-N0500YLLF	5

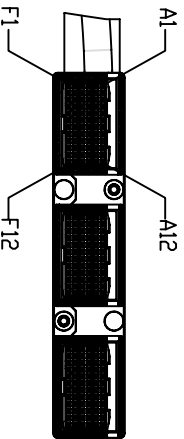
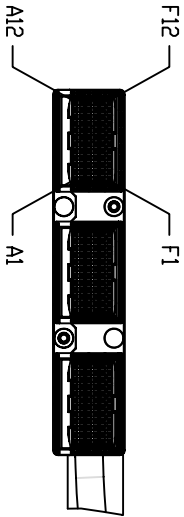


△ Every 250mm fixed with Cable Tie



Side A

Side B



No.	DESCRIPTION	QTY	UNIT
①	72P CONNECTOR	2	PC
②	24 Twisted Pair,26AWG,Halogen Free Grey Rd1 7032	AR	MR
③	CABLE TIE	AR	PC
④	LABEL	1	PC
⑤	LABEL(Y)	1	PC
⑥	LABEL(X)	1	PC
⑦	BLUE LABEL.W=25MM	2	PC

rev	ech no	dr	date
A	-	DDNG	2016-09-07
B	21442733-1	DDNG	2017-06-15

www.fciconnect.com		surface	-	tolerance std	-	projection	mm
TOLERANCES UNLESS OTHERWISE SPECIFIED		ANGULAR	LINEAR	0X	±-	size	Scale
Dr	DDNG TANG	2017-06-15	2017-06-15	0X	±-	A3	2:3
Eng	DDNG TANG	2017-06-15	2017-06-15	0X	±-	ECN	
Chr	TIM YAD	2017-06-15	2017-06-15	0X	±-	Product family	Metrol Spec ref
Appr	TIM YAD	2017-06-15	2017-06-15	0X	±-	Customer	10139824

Amphenol FCI	HDXS 72 pair TD HDXS 72 pair Cable Assembly	Rev. B
catalog no		sheet 1 of 3

C0NN1 WIRE DIAGRAM

C0NN1	C0NN1
C0NN2	C0NN2
C0NN3	C0NN3

C0NN1,C0NN2,C0NN3

1	2	3	4	5	6	7	8	9	10	11	12
1 BL	1 VH		5 GY	5 VH		2 DR	2 VH		6 BL	6 RD	
	3 GN	3 VH		7 DR	7 RD		4 BN	4 VH		8 GN	8 RD
C 9 BN	9 RD		13 GN	13 BK		10 GY	10 RD		14 BN	14 BK	
D	11 BL	11 BK		15 GY	15 BK		12 DR	12 BK		16 BL	16 YE
E 17 DR	17 YE		21 BL	21 VT		18 GN	18 YE		22 DR	22 VT	
F	19 BN	19 YE		23 GN	23 VT		20 GY	20 YE		24 BN	24 VT

Coding explanation

WH	White	BL	Blue
BK	Black	DR	Orange
YE	Yellow	GN	Green
RD	Red	BN	Brown
WH-BL	White-Blue	GY	Gray
VT*	VIDLET		Not Connected

\* WH-BL CAN BE REPLACED BY VT DEPENDING ON CABLE FACT STRUCTURE.

www.fciconnect.com

Dr	DDNG TANG	2017-06-15	ANGULAR	LINER	0X	±-	size	A3	Scale	2:3
Eng	DDNG TANG	2017-06-15	0° ±-		0XX	±-	ECN			
Chr	TIM YAD	2017-06-15			0XXX	±-	Product family			
Appr	TIM YAD	2017-06-15					Metrol	Spec ref		

HDXS 72 pair TD HDXS 72 pair Cable Assembly

10139824

Rev. B

surface - tolerance std

tolerances unless otherwise specified

projection

mm

Scale 2:3

Product family

Metrol Spec ref

CUSTOMER

sheet 2 of 3

NOTES:

- 1. MATES WITH 3XFCI BOARD CONNECTOR 10075388-101LF.
- 2. IF ASSEMBLED LENGTH 'L' LESS THAN 0.5 METERS, THE TOLERANCE=+5/-0MM.
- 3. DEFINE THE PART NUMBER SCHEME FOR THE CABLE ASSEMBLY, REFER TO 10076663
- 4. UNLESS OTHERWISE SPECIFIED ,LABEL POSITION SHALL BE APPROXIMATELY 60MM FROM REAR OF CONNECTOR
- 5. UNLESS OTHERWISE SPECIFIED ,LABEL CONTENT SHALL CONTAINS THE BELOW:

 -CUSTOMER P/N  
-YYWW

- 6. ALL CABLE ASSEMBLIES SHALL BE TESTED 100% FOR CONTINUITY AS DEFINED IN WIRING LIST
- 7. UNLESS OTHERWISE SPECIFIED ALL CABLE ASSEMBLIES SHALL BE 100% HI-POT TESTED BY APPLYING DC 500V FOR MINIMUM OF 0.1S.
- CONTACT RESISTANCE: L<=10M 5ohm; 10M<L<=20M 10ohm; 20M<L<=50M 20ohm; 50M<L<=100M 40ohm; 100M<L<=150M 60ohm; 150M<L<=200M 80ohm;

INSULATION RESISTANCE 20 M Ohm, UNLESS ACTIVE COMPONENTS ARE USED IN THIS ASSEMBLY.

- 8. OTHER TESTING PERFORMED AS REQUIRED BY PRODUCT SPECIFICATION
- 9. CABLE ASSEMBLIES SHALL WITHSTAND AN AXIAL LOAD OF 200N AT A RATE OF 25.4mm/Min, CABLE IS NOT MOED OUT OF METAL COVER.
- 10. LEAD FREE PRODUCTS MEET EUROPEAN UNION DIRECTIVES AND OTHER COUNTRY REGULATIONS AS AS DESCRIBED IN GS-22-008
- 11. CONNECTOR ASSEMBLIES SHOWN ARE FOR REFERENCE ONLY AND MAY NOT SHOW ALL PART DETAIL. REFERENCE CONNECTOR ASSEMBLY DRAWING FOR COMPLETE DETAILS.
- 12. PACKAGING: BUNDLE 1PCS BUBBLE BAG WITH RUBBER LOOP TO THE EACH CONNECTOR. IF THE CABLE LENGTH LESS THAN 1M, MULTIPLE PRODUCTS PACK INTO CARTON DIRECTLY. IF THE CABLE LENGTH MORE THAN OR EQUAL TO 1M, EACH PRODUCT SHOULD BE COILED AND FIXED WITH CABLE TIE BELT THEN PACK INTO CARTON.
- 13. THIS DIMENSION IS A FINISHED PRODUCT LENGTH.

www.fciconnect.com		surface	-	tolerance std	-	projection	mm
TOLERANCES UNLESS OTHERWISE SPECIFIED		ANGULAR	LINEAR	0X	±-	size	Scale
Dr	DDNG TANG	2017-06-15	0° ±'	0XX	±-	A3	2:3
Eng	DDNG TANG	2017-06-15		0XXX	±-	ECN	
Chr	TIM YAD	2017-06-15					
Appr	TIM YAD	2017-06-15					
Amphenol FCI		HDXS 72 pair TD HDXS 72 pair		Metrol Spec ref		10139824	
catalog no		CUSTOMER		sheet 3 of 3		Rev. B	