

REPORT

7L Series



finder[®]
SWITCH TO THE FUTURE

NEW

New LED Panel Light

Type 7L.43 (600 lm)

Type 7L.46 (1200 lm)

Finder's new LED light
for electrical panels -
with magnetic mounting.

Design by MINELLI | FOSSATI

Features

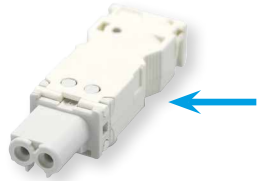
- Mounting "Two in one" - Direct magnetic mounting or through a screw-fixed metallic support
- Versions for switching ON/OFF via integral switch, or integral movement detector
- **Brightness levels: 600 or 1200 lumens**
- Power supply - Multi-voltage: 12...48 V AC/DC and 110...240 V AC/DC
- New design

NEW

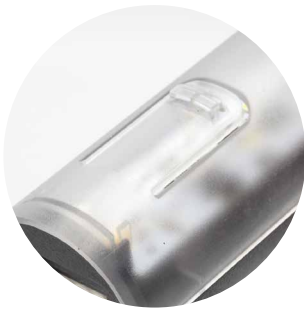


Type 7L.43 (600 lumens)
Type 7L.46 (1200 lumens)

- Versions for switching via an ON/OFF switch or via integral movement detector
- Direct magnetic mounting or through a screw-fixed metallic support
- Power supply: 12...48 V AC/DC and 110...240 V AC/DC
- Nominal power consumption: 9 W (600 lm), 13 W (1200 lm)
- Radiation angle: 120°
- Light colour: 5,000 K
- Protection category: IP20
- Connector included



Switching via ON/OFF switch



Switching via movement detector



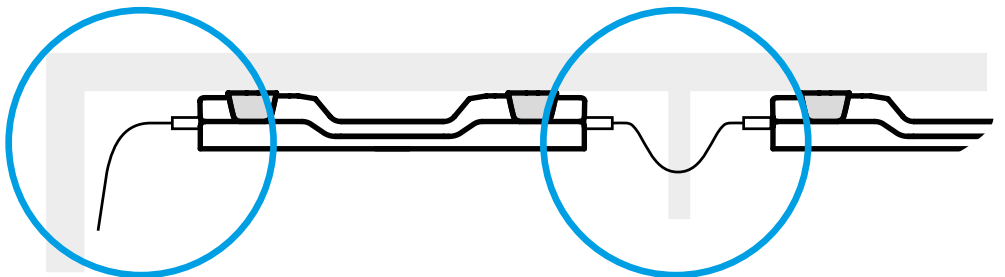
Magnetic fixing direct to metallic panel



Magnetic fixing via screw-fixed metallic support



Quick and simple wiring system via **push-in terminals** for the connection to a single unit, or via **plug-in terminals** for the connection to a single or multiple units.



Multiple connection

Easily connected with plug connectors (up to max. 7 lamps)

Outline drawings

