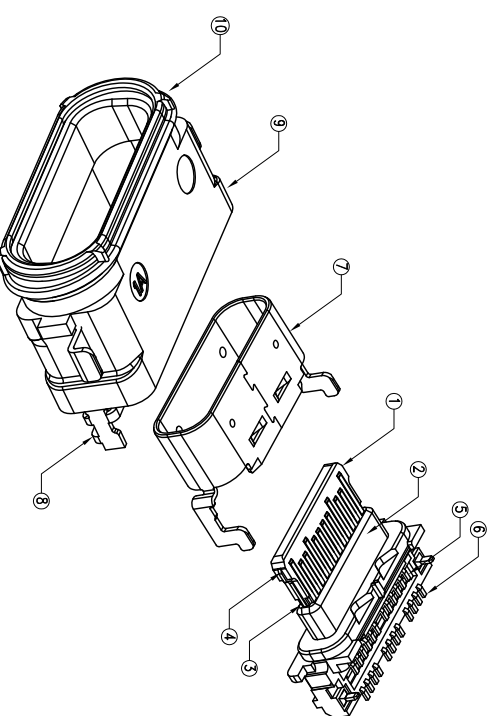
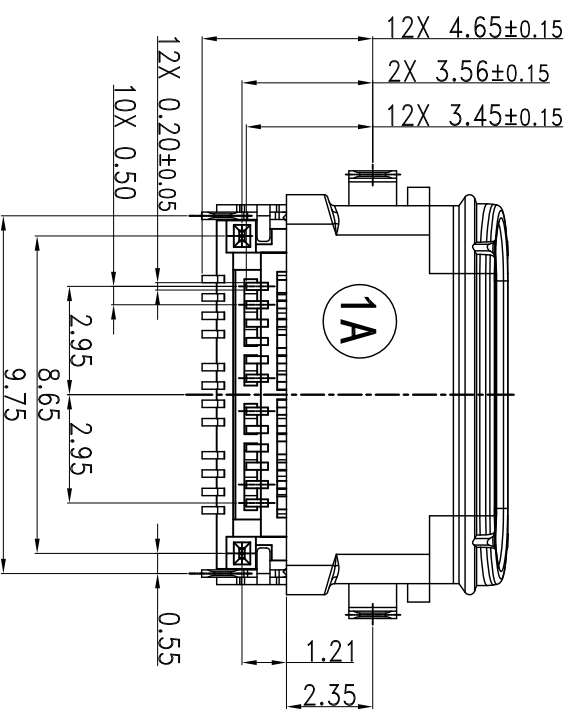
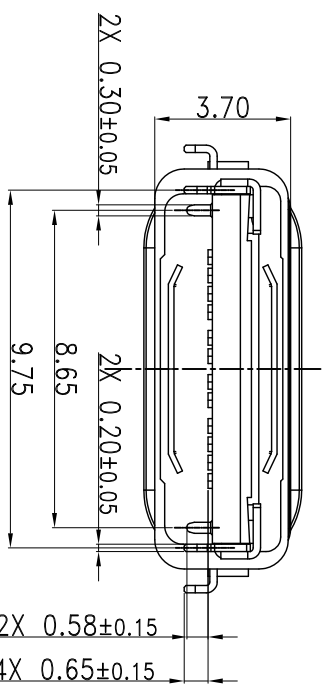
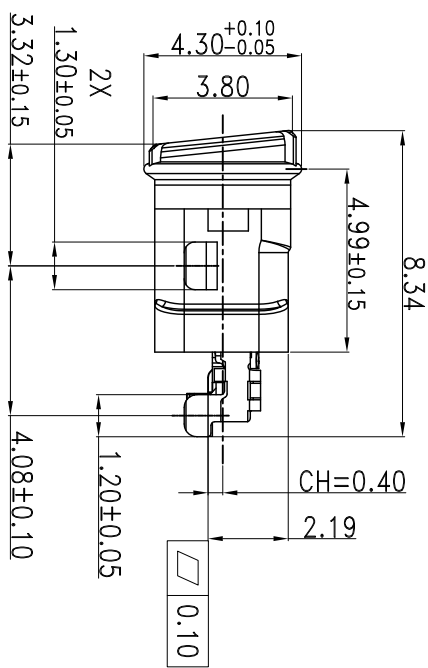
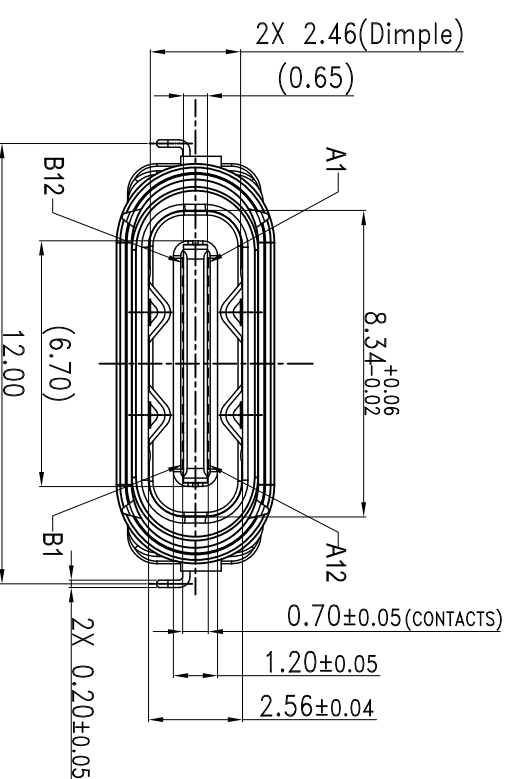


| Pin No | Signal Name | Mating Sequence | Pin No | Signal Name | Mating Sequence |
|--------|-------------|-----------------|--------|-------------|-----------------|
| A1 | GND | First | B12 | GND | First |
| A2 | TX1+ | Second | B11 | RX1+ | Second |
| A3 | TX1- | Second | B10 | RX1- | Second |
| A4 | Vbus | First | B9 | Vbus | First |
| A5 | CC1 | Second | B8 | SBU2 | Second |
| A6 | D+ | Second | B7 | D- | Second |
| A7 | D- | Second | B6 | D+ | Second |
| A8 | SBU1 | Second | B5 | CC2 | Second |
| A9 | Vbus | First | B4 | Vbus | First |
| A10 | RX2- | Second | B3 | TX2- | Second |
| A11 | RX2+ | Second | B2 | TX2+ | Second |
| A12 | GND | First | B1 | GND | First |
| SHELL | | | SHELL | | |



| ITEM | DESCRIPTION | QTY | MATERIAL | FINISH |
|------|-----------------|-----|--------------------|--|
| 10 | LIM | 1 | SILICA GEL | BLACK |
| 9 | SOLDER PIN | 1 | STAINLESS STEEL | SOLDER NICKEL: 50U" MIN |
| 8 | SHELL HOUSING | 1 | High-TEMP. PLASTIC | BLACK |
| 7 | SHELL | 1 | STAINLESS STEEL | SOLDER NICKEL: 50U" MIN |
| 6 | TOP TERMINAL | 1 | COPPER ALLOY | MATING SIDE:30u" AU MIN; SOLDER TAIL:GOLD FLASH, 50u" NICKEL OVERALL. |
| 5 | BOTTOM TERMINAL | 1 | COPPER ALLOY | MATING SIDE:30u" AU MIN; SOLDER TAIL:GOLD FLASH, 50u" NICKEL OVERALL. |
| 4 | MID PLATE | 1 | STAINLESS STEEL | SOLDER NICKEL: 50U" MIN |
| 3 | TOP HOUSING | 1 | High-TEMP. PLASTIC | BLACK |
| 2 | BOTTOM HOUSING | 1 | High-TEMP. PLASTIC | BLACK |
| 1 | MAIN HOUSING | 1 | High-TEMP. PLASTIC | BLACK |

| GENERAL | TOLERANCE | FILE NO. | PART NO. | DRAWN | DATE | SCALE |
|----------|-----------|-----------|-----------------------------------|-------------------|------------|-------|
| X.±0.50 | X.°±5° | C12401831 | 124018312112A | Dave.Ye | 2018/10/17 | 1:1 |
| .X±0.38 | .X°±2° | REV. A | USB TYPE C CONNECTOR (WATERPROOF) | Checked Weison.Lu | | |
| .XX±0.25 | .XX±1° | SIZE A4 | 1/2 | APPROVED Tom | | |

| REV. | ECN.NO. | MODIFY.CONTENT | DATE |
|------|----------|----------------|------------|
| A | 18100002 | NEW RELEASE | 10/17/2018 |

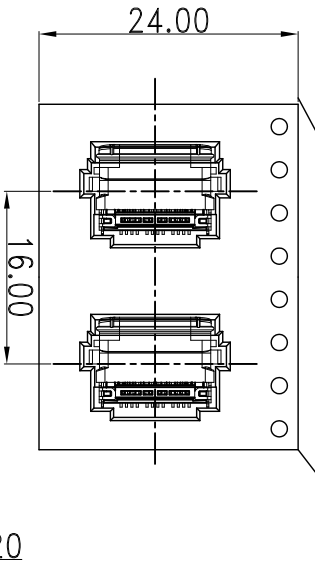
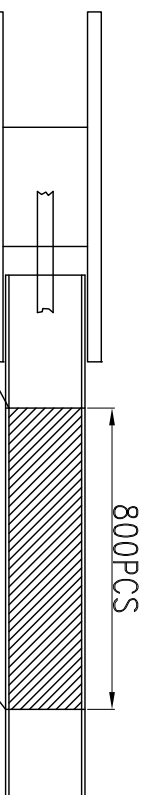
- Notes:
- Material: SEE BILL OF MATERIAL
 - Tongue position: 0.12mm Max.
 - Waterproof level: IPX8
 - No burrs are allowed on the contact area and solder tail area, the maximum allowed stamping burr is 0.05mm unless otherwise.
 - Specification
 - Operation Temperature: -40°C to +85°C
 - Voltage Rating: 30V AC RMS
 - Insulation Resistance: Initial 1000 MΩ Min. 100 MΩ after environment test
 - Soldering Heat Resistance: 260°C
 - Durability: 10,000 Cycles
 - Mating force: 5N~20N
 - Un-mating force: 6N~20N

6.Part Number: 124018312112A

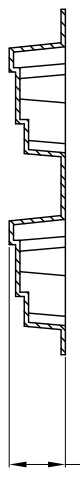
Plating Spec: "Au30u"
 21:Mating Area: Au30u"
 Solder Area: Gold flash
 Date Code Description
 0:Without D/C
 1:With D/C
 A:HF
 Package Spec.
 2:Reel

BILL OF MATERIAL

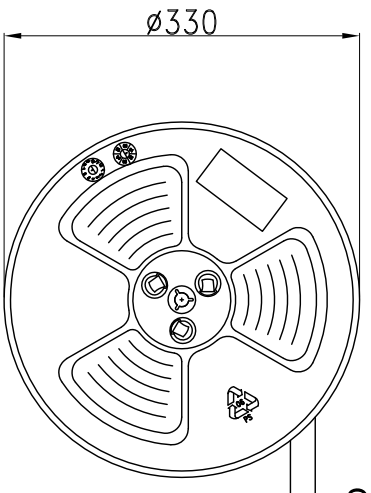
Amphenol Shouhmin Industry



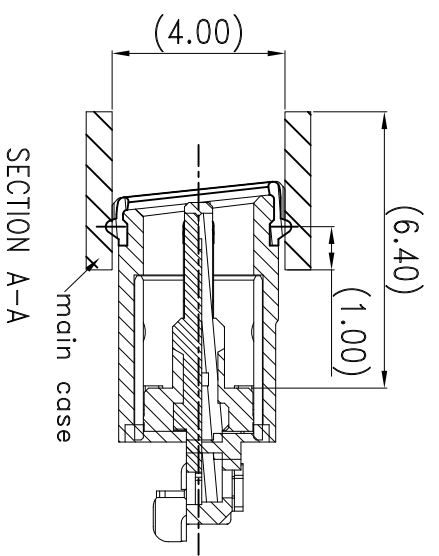
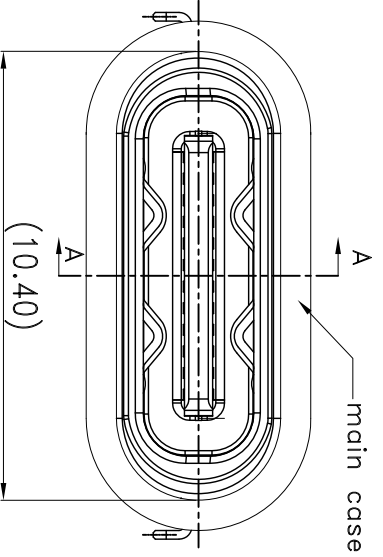
| PCS/BOX | PCS/REEL | REEL/BOX |
|---------|----------|----------|
| 8000 | 800 | 10 |



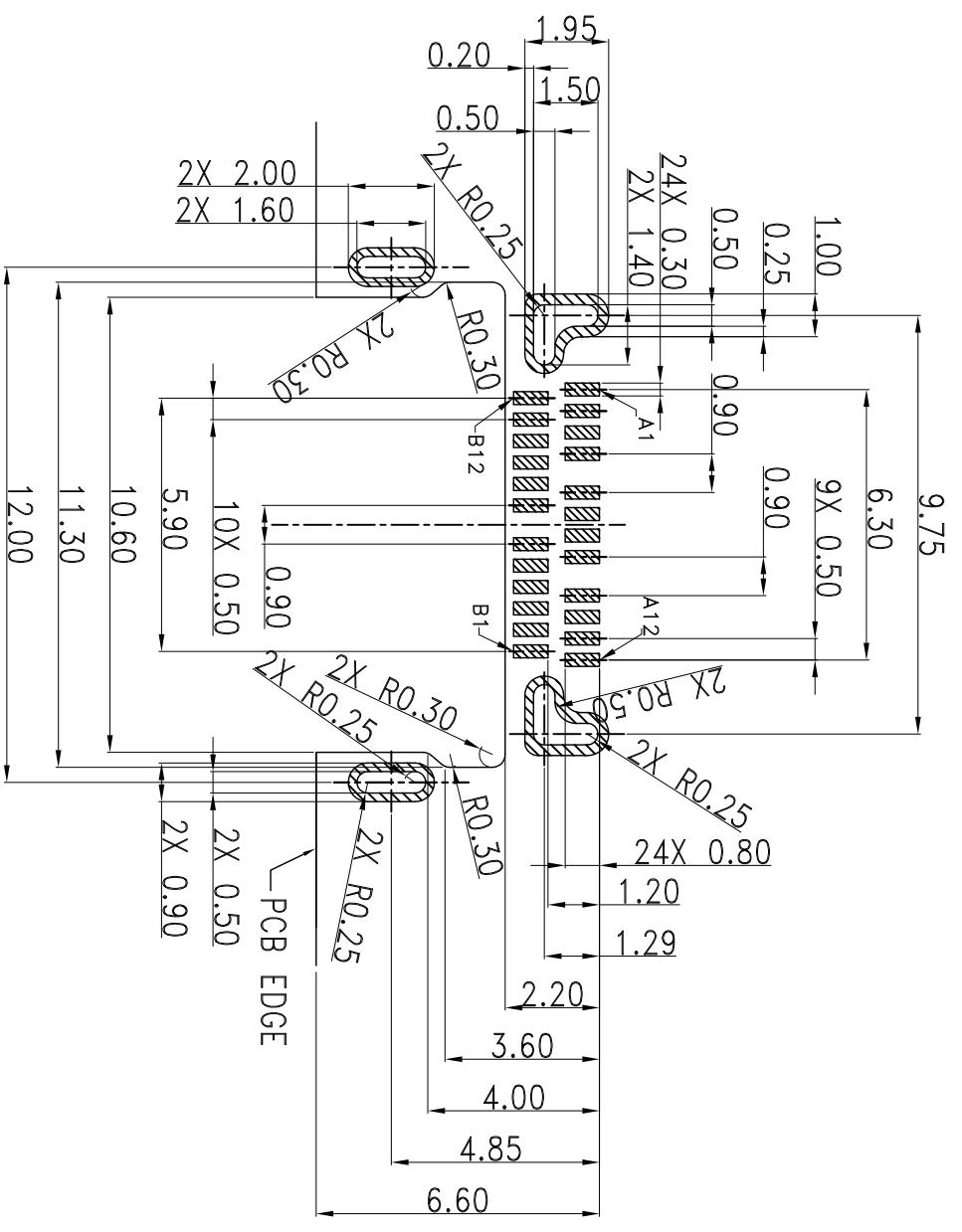
customer unwinding direction



PACK DIRECTION



PANEL CUT-OUT REFERENCE



RECOMMENDED PCB LAYOUT
(Tolerance= ± 0.05)

| GENERAL | TOLERANCE | FILE.NO. | C12401831 | PART.NO. | 124018312112A | DRAWN | Dave.Ye |
|----------------|-------------------|----------|-----------|----------|-----------------------------------|----------|-----------|
| X. ± 0.50 | X. $\pm 5^\circ$ | REV. | A | TITLE | USB TYPE C CONNECTOR (WATERPROOF) | CHECKED | Weison.Lu |
| .X ± 0.38 | .X $\pm 2^\circ$ | SIZE | A4 | SHEET | 2/2 | APPROVED | Tom |
| .XX ± 0.25 | .XX $\pm 1^\circ$ | | | | | | |

| MATERIAL | SCALE | 1:1 |
|----------------------------|------------|------|
| DATE | 2018/10/17 | UNIT |
| Amphenol Shouhmin Industry | | |
| | | MM |

| REV. | ECN.NO. | MODIFY.CONTENT | DATE |
|------|---------|----------------|------|
| | | | |
| | | | |
| | | | |