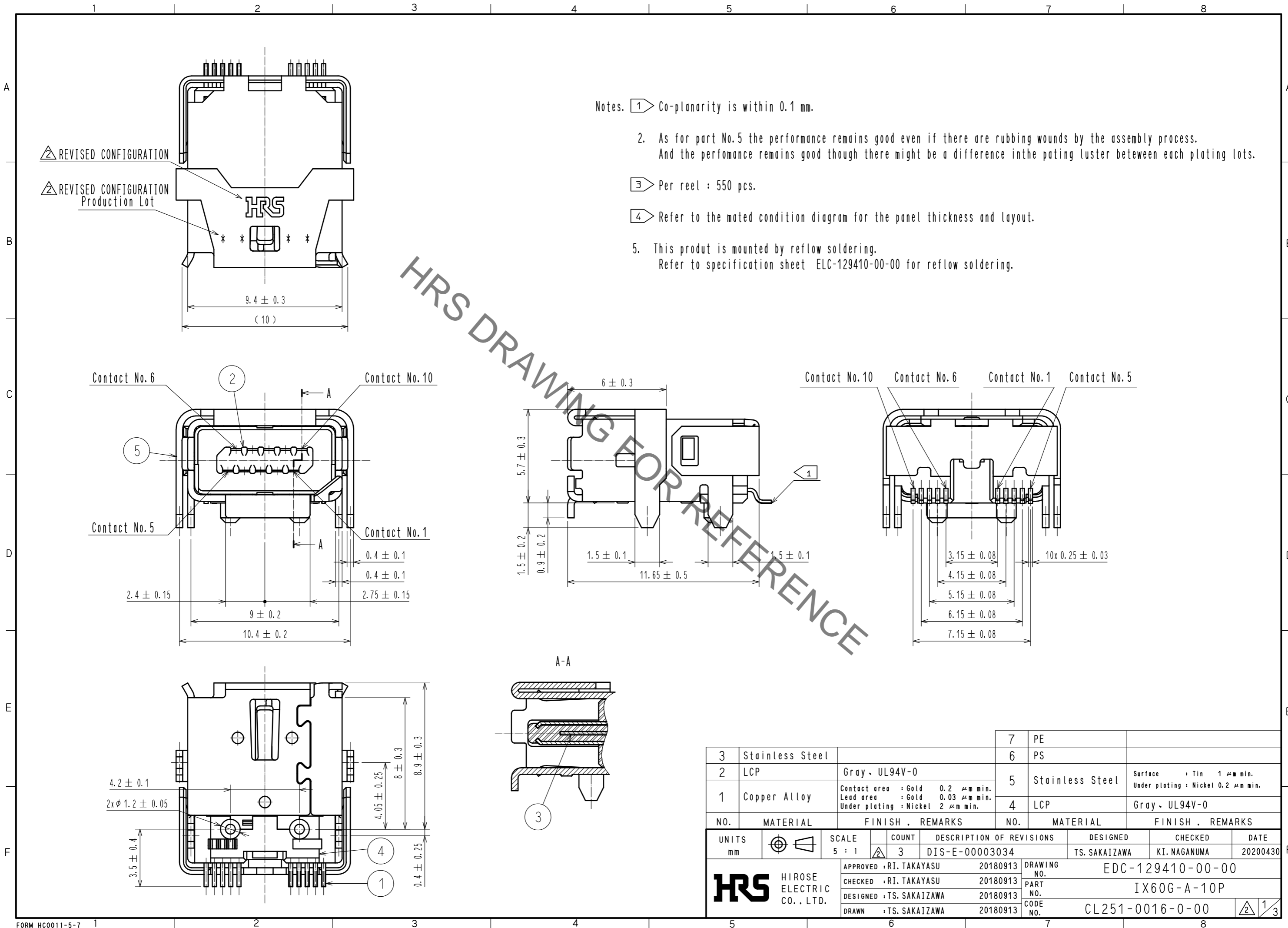


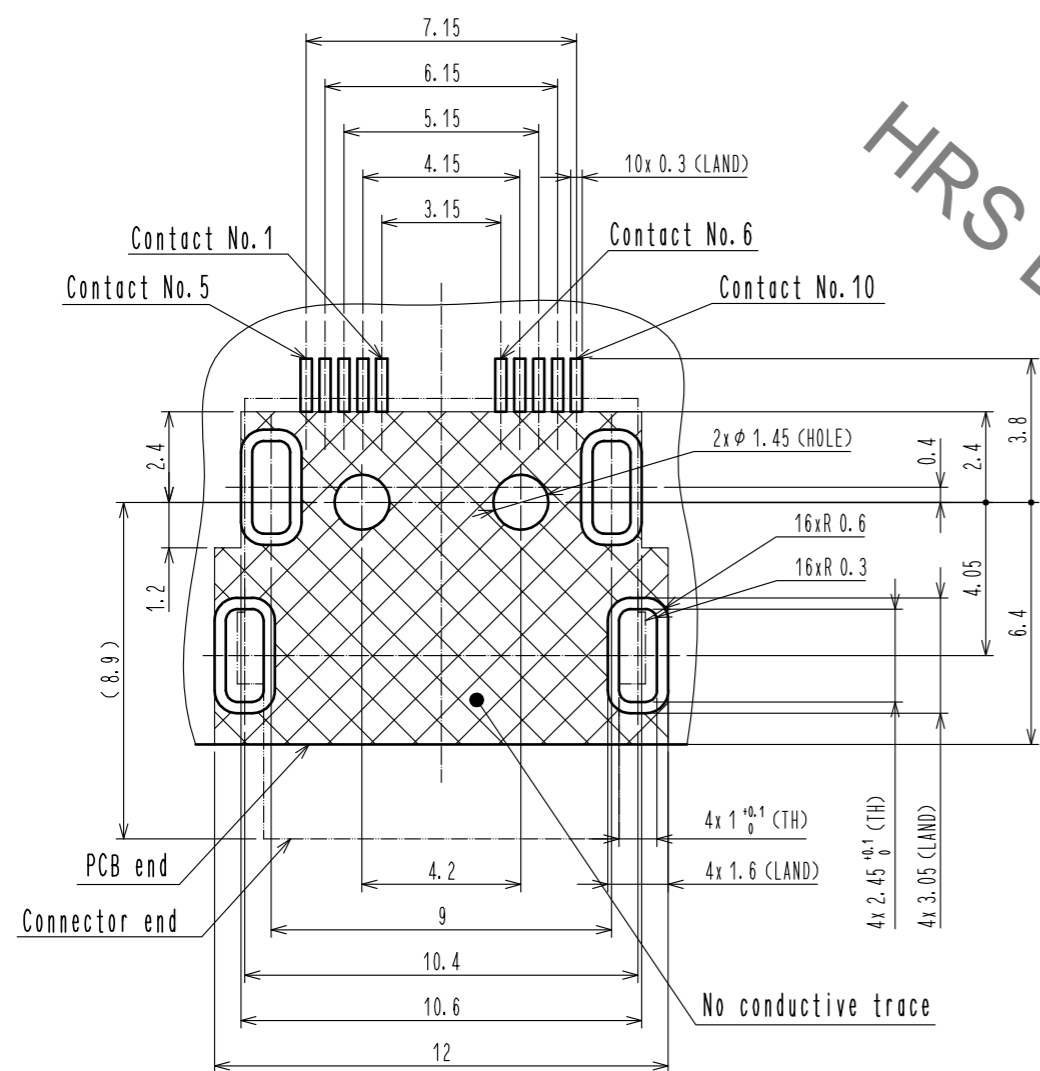
Oct.1.2020 Copyright 2020 HIROSE ELECTRIC CO., LTD. All Rights Reserved.
In case of consideration for using Automotive equipment / device which demand high reliability, kindly contact our sales window correspondents.



3	Stainless Steel		7	PE	
2	LCP	Gray - UL94V-0	6	PS	
1	Copper Alloy	Contact area : Gold 0.2 μm min. Lead area : Gold 0.03 μm min. Under plating : Nickel 2 μm min.	5	Stainless Steel	Surface : Tin 1 μm min. Under plating : Nickel 0.2 μm min.
			4	LCP	Gray - UL94V-0
NO.	MATERIAL	FINISH . REMARKS	NO.	MATERIAL	FINISH . REMARKS
UNITS	mm	SCALE 5 : 1	COUNT 3	DESCRIPTION OF REVISIONS	DESIGNED TS. SAKAIZAWA
HRS HIROSE ELECTRIC CO., LTD.		APPROVED : RI. TAKAYASU 20180913	DRAWING NO. EDC-129410-00-00		CHECKED KI. NAGANUMA
		CHECKED : RI. TAKAYASU 20180913	PART NO. IX60G-A-10P		DATE 20200430
		DESIGNED : TS. SAKAIZAWA 20180913	CODE NO. CL251-0016-0-00		
		DRAWN : TS. SAKAIZAWA 20180913			

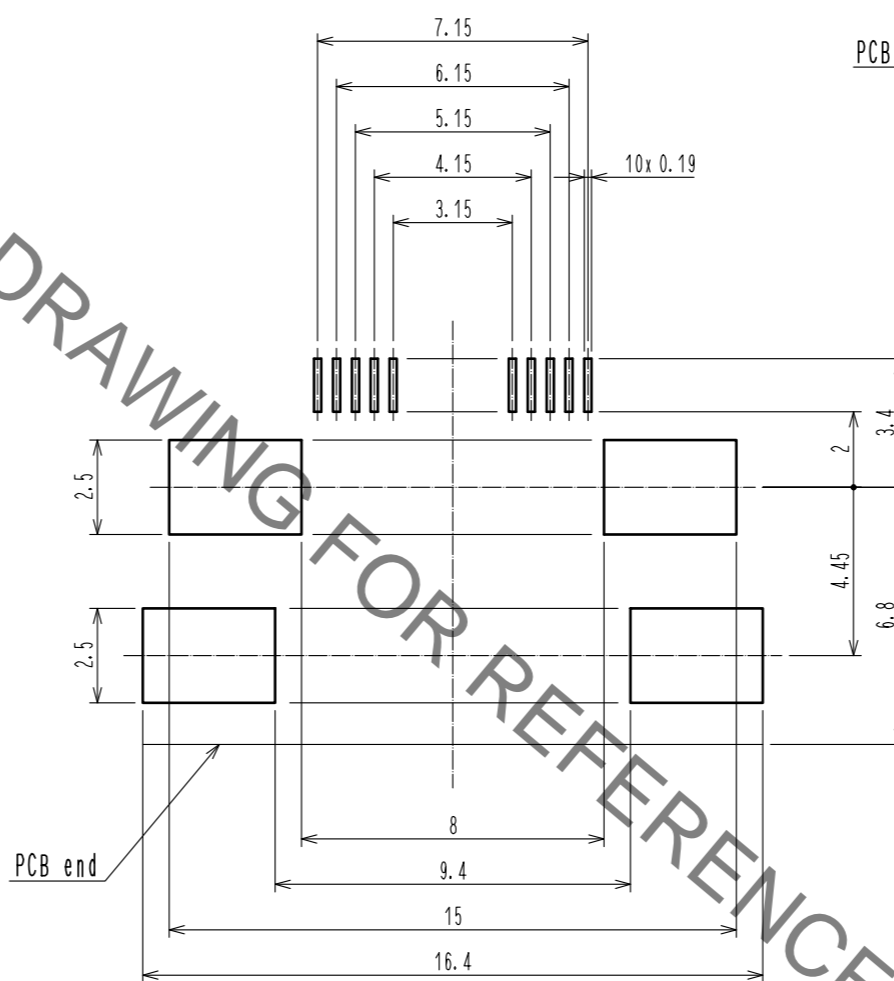
Oct.1.2020 Copyright 2020 HIROSE ELECTRIC CO., LTD. All Rights Reserved.
In case of consideration for using Automotive equipment / device which demand high reliability, kindly contact our sales window correspondents.

Reference PCB Layout (Connector Mounting Side) (t = 1.6)



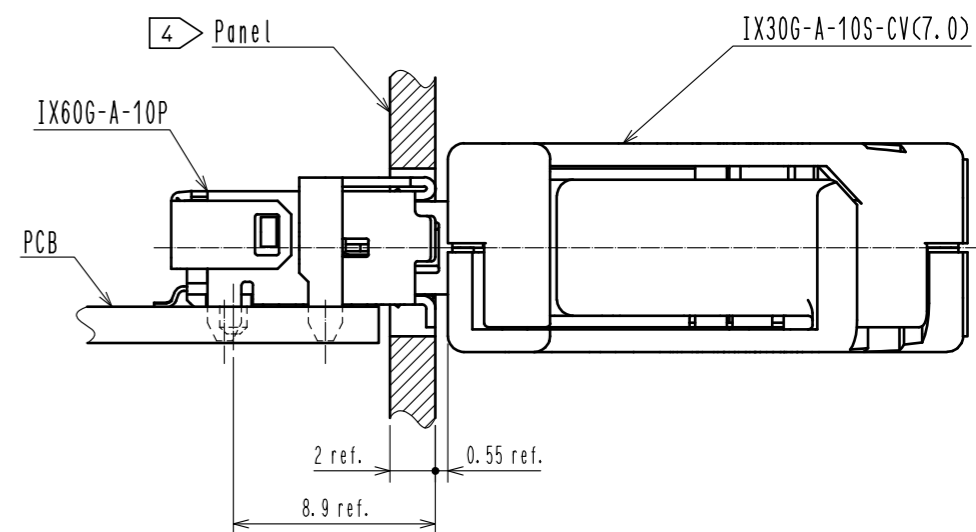
General tolerance is +/- 0.05

Reference Metal Mask Layout (t = 0.15)

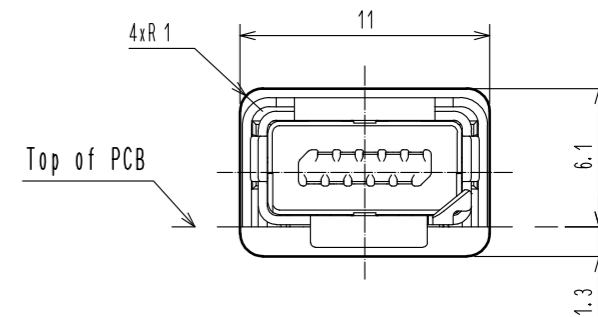


General tolerance is +/- 0.02

Mated Condition (Free)



Reference Dimensions of Panel Cutout (Free)



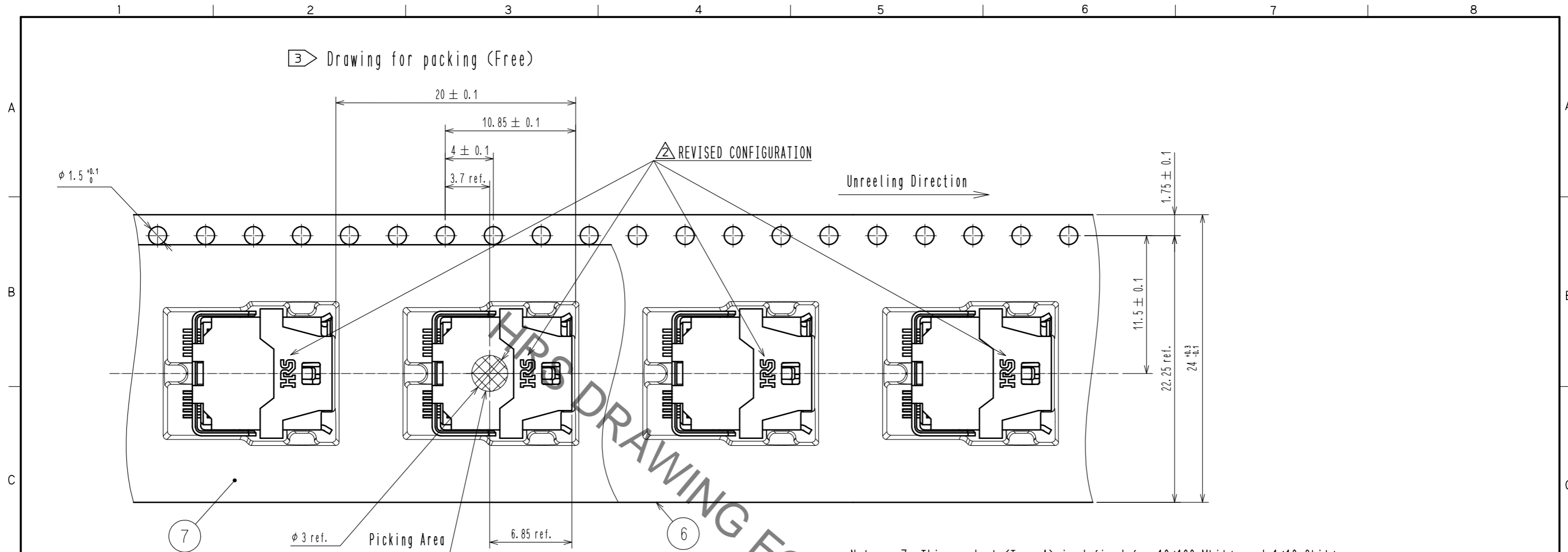
Dimension is reference.

- Thickness of metal mask is 0.1 mm min.
- Metal mask dimensions of the drawings described, are reference dimensions for 0.15 mm thickness metal mask.
- Change the metal mask dimensions by thickness of the metal mask, thickness of PCB, component of solder paste and mounting conditions.
- Change the metal mask dimensions in case of mounting IX60G-+-10P in parallel.
- Change the metal mask dimensions, if there are other mounting parts or implementation pattern around the portion of mounting position of IX60G-+-10P.
- Refer to the technical specification (ETAD-E3170-00) for different variations of the metal mask pattern width.

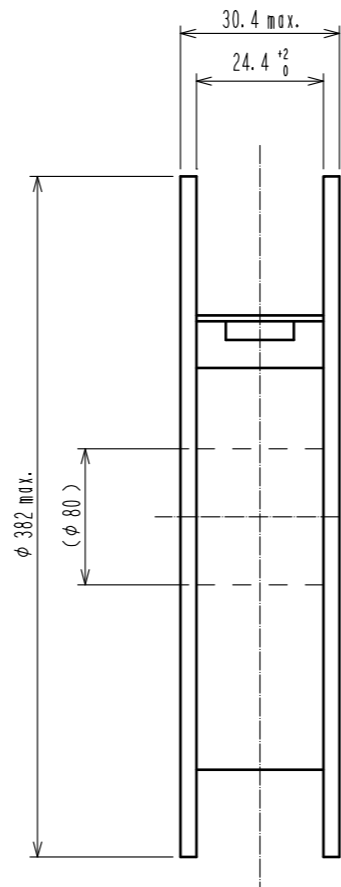
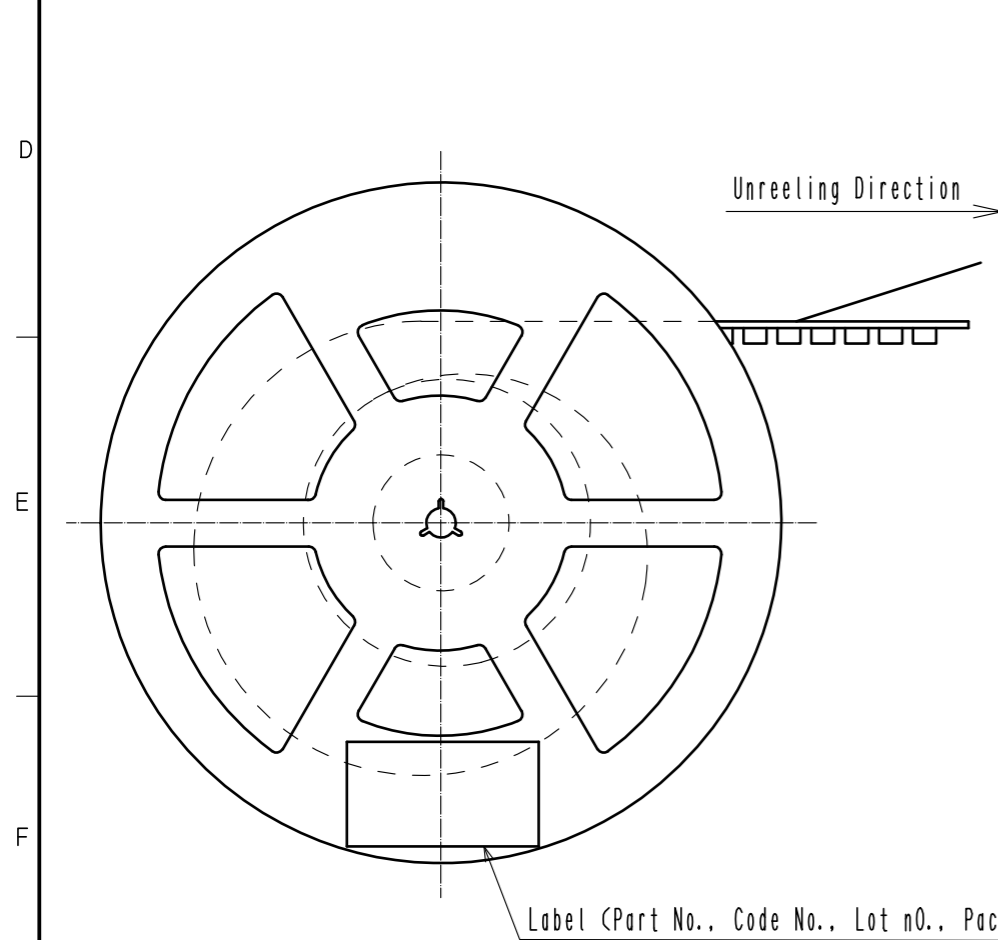
HRS	DRAWING NO.	EDC-129410-00-00
	PART NO.	IX60G-A-10P
	CODE NO.	CL251-0016-0-00
		2/3

Oct.1.2020 Copyright 2020 HIROSE ELECTRIC CO., LTD. All Rights Reserved.
 In case of consideration for using Automotive equipment / device which demand high reliability, kindly contact our sales window correspondents.

3 Drawing for packing (Free)



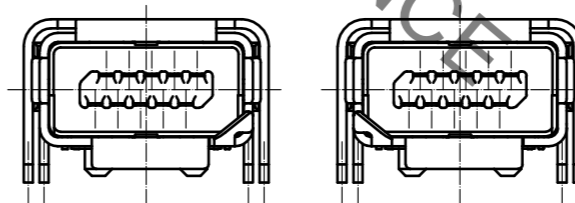
Notes. 7. This product (Type A) is defined for 10/100 Mbit/s and 1/10 Gbit/s Ethernet communication. Please use Type B for all other non Ethernet applications like signaling, serial or other industrial bus communication systems.



Mating Shape

Type A

Type B



Pin Assignment For 10/100 Mbit/s And 1/10 Gbit/s Ethernet

Contact No.	Signal	
	10/100 Mbit/s	1/10 Gbit/s
1	TX+	BI_DA+
2	TX-	BI_DA-
3	N. C	GND
4	N. C	BI_DC+
5	N. C	BI_DC-
6	RX+	BI_DB+
7	RX-	BI_DB-
8	N. C	GND
9	N. C	BI_DD+
10	N. C	BI_DD-

HRS

DRAWING NO. EDC-129410-00-00
 PART NO. IX60G-A-10P
 CODE NO. CL251-0016-0-00

3/3