

IoT Development Kit (IDK) Quick Start Guide

Getting Started with the IoT Development Kit from ON Semiconductor

Available Shields

- IDK Baseboard
- Ambient Light Sensor (ALS) Shield
- Touch Shield, PIR Shield, Stepper Motor Shield
- LED Ballast Shield, Wi-Fi® Module
- BLDC Shield, PoE Shield, CAN Shield

Accessories

- Mini-USB Cable
- Cable Assembly

Tools Needed

- IDE Installer
- PC: Windows® PC with minimum 1 USB port, JRE/JDK version 8u101 or later installed. OS: Windows 7, 8 or 10.

Introduction

The IDK baseboard can be connected with different shields depending on the required IoT application. The IDK baseboard allows the user to create many types of IoT nodes and/or gateways depending on which shields are used with the baseboard. The IDK baseboard is configured by connecting the baseboard with the PC and USB cable and using accompanying PC software.

Software Installation

Programming/configuring the IDK requires the ON Semiconductor IDE software. The IDE should be installed on the PC before connecting the hardware to the PC. The Software Suite can be downloaded from www.onsemi.com.

Steps for installation of the IDE are mentioned on page 5 of this Quick Start guide.

Hardware Setup

After the IDE software is installed, hardware can be connected as shown in Figure 1. A single 12 V, 2 A power supply adapter powers the evaluation board (e.g. CUI INC, model SMI24-12....12 V/2 A or any other supporting $V_{OUT} = 10-35$ V). Jumper settings required for the correct operation of the baseboard and the shields are listed in subsequent sections in this document. The shield boards plug directly into the IDK baseboard. The PC connects to the IDK baseboard through a USB cable.

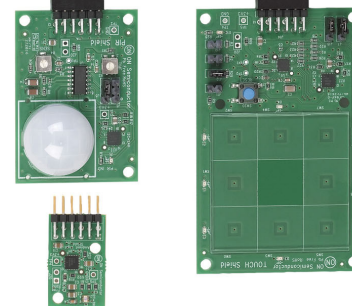
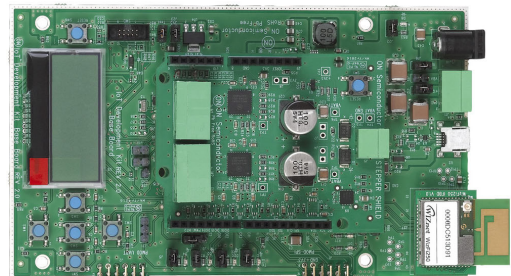
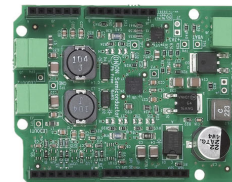
The shields are classified into two broad categories – PMOD & Arduino – based on the interface where the shields are connected to the baseboard. In addition, Arduino-type shields include “Powered” and “Non-Input Power” shields.



ON Semiconductor®

www.onsemi.com

EVAL BOARD USER'S MANUAL



EVBUM2497/D

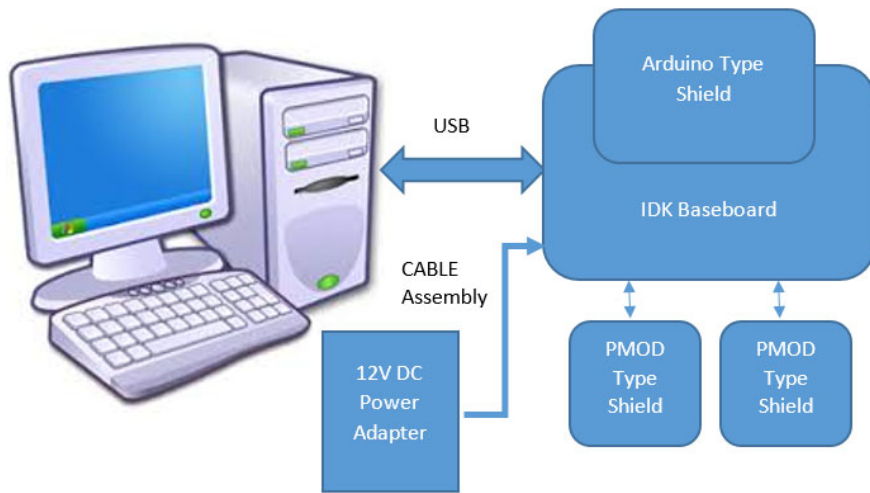


Figure 1. Hardware Setup

APPLICATIONS INFORMATION

Powering Up the IDK

The IDK baseboard can be powered up in stand-alone USB Mode.

Powered shields require additional power supply for its operation. No-Input power shields (e.g. PMOD-type shields) draw power from the baseboard itself.

PMOD type shields: ALS, PIR & Touch (does not require additional power supply).

Arduino powered shields: *Stepper Motor & LED Ballast shields are supplied from external power source.*

IDK Powering Modes

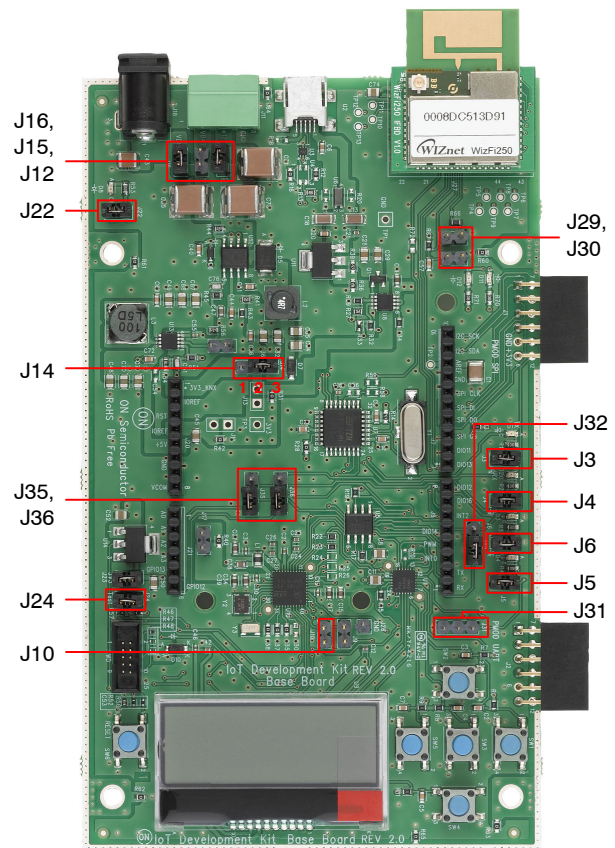
The IDK can be powered in 4 different ways:

1. USB: The IDK baseboard can be powered through USB Mode. Jumper setting: None.
 - CAUTION:** In USB Mode, powered shields like Stepper motor, LED Ballast, etc. need to be connected to an external 12 V supply using the cable assembly provided with the IDK.
2. External 12 V DC power adapter supplied with the IDK: Wall power adapter can be connected to the DC jack J11. Jumper settings: J16:ON, J12: OFF & J15: OFF.
3. External 12 V DC through J11 Connector: 12 V can be provided from an external DC power supply through J11 Pin no.2 (+Ve) & J11 Pin No. 3 (-Ve). Jumper settings: J12: ON, J15: OFF & J16: OFF.
4. External 9–32 V DC through J11 Connector: 12 V can be provided from an external DC power supply through J11 Pin No.2 (+Ve) & J11 Pin No. 3 (-Ve). Jumper settings: J12: OFF, J15: ON & J16: OFF.

Jumper Settings

The default jumper settings are highlighted below for the IDK boards.

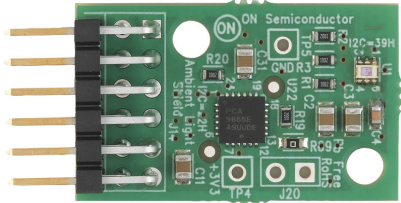
Baseboard Rev2.0



- J32: Pins 2–3 to be shunted for Expander IO1_6 th pin as Wi-Fi Mod Chip select
- J31: Pins 1–2 to be shunted for HR pulse from HRM shield to DIO16
- J31: Pins 2–3 to be shunted for DIO16 to Arduino connector.
- J35, J36: Pins 1–2 to be shunted for expander IO pins to Arduino connectors
- J35, J36: Pins 2–3 to be shunted for expander IO Pins to LEDs

Figure 2. Baseboard Rev 2.0

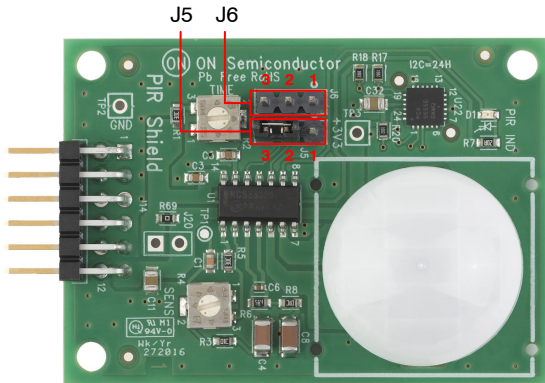
ALS



No Jumper settings needed

Figure 3. ALS

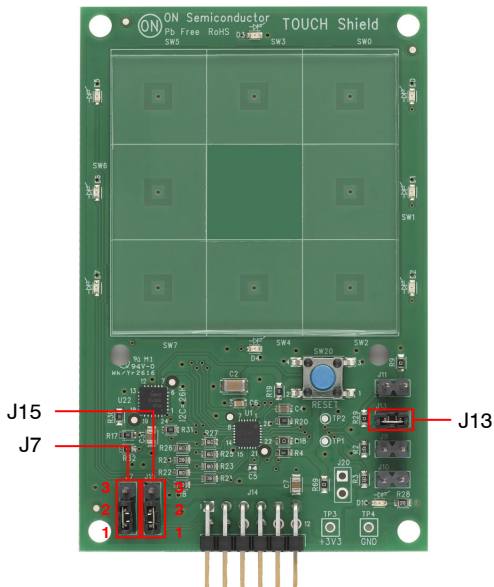
PIR



J6: 2-3 to be shunted
J5: 2-3 to be shunted

Figure 4. PIR

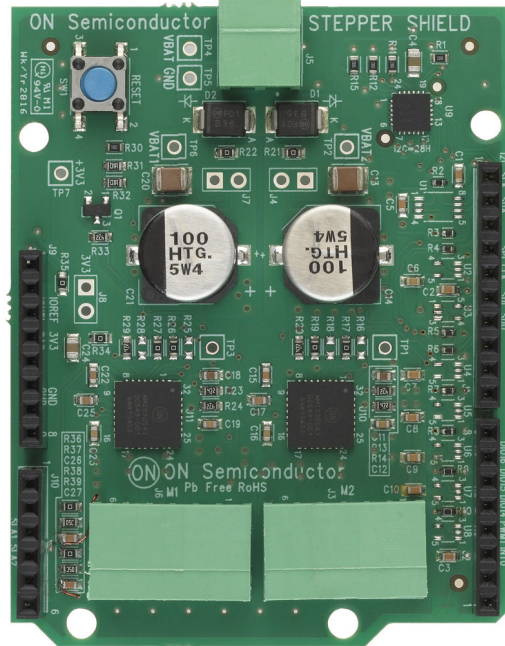
Touch



J7: 1-2 to be shunted for I²C Mode selection
J15: 1-2 to be shunted for I²C Mode selection
J13: 1-2 to be shunted

Figure 5. Touch

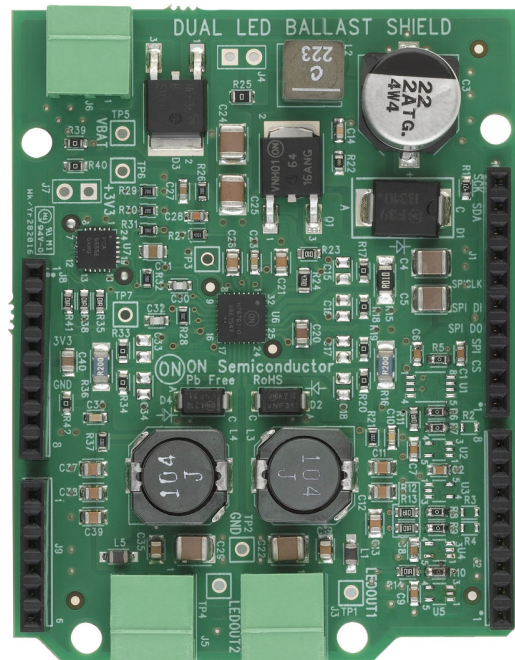
Stepper



No Jumper settings needed

Figure 6. Stepper

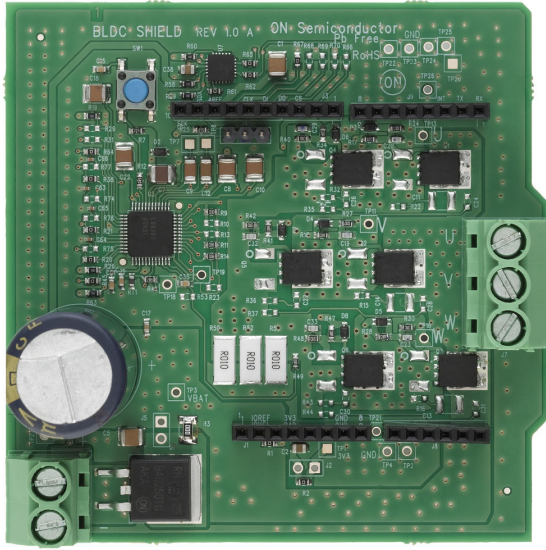
Ballast



No Jumper settings needed

Figure 7. Ballast

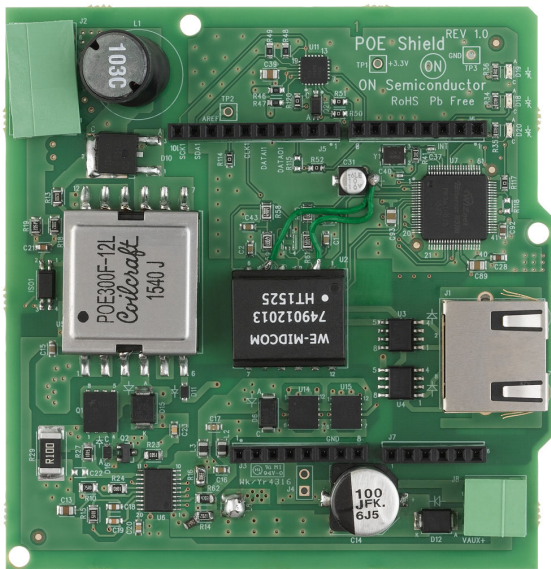
BLDC Shield



No Jumper settings needed

Figure 8. BLDC Shield

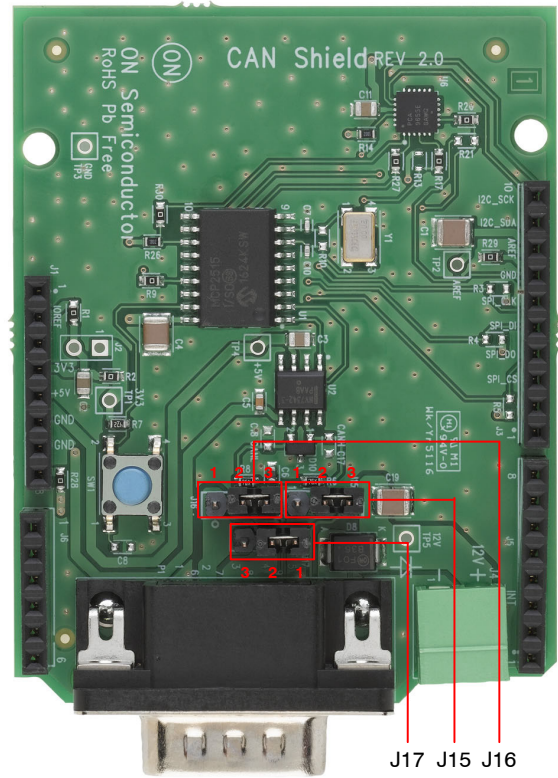
PoE Shield



No Jumper settings needed

Figure 9. PoE Shield

CAN Shield



CAN H – J15, CAN L – 16, GND – J17

| Jumper Configuration for DB9 Pins | | |
|-----------------------------------|-------|--------|
| | CAN | OBD II |
| CAN H | Pin 7 | Pin 3 |
| CAN L | Pin 2 | Pin 5 |
| GND | Pin 3 | Pin 2 |

Figure 10. CAN Shield

SW INSTALLATION STEPS

Java Installation

JRE/JDK version 8u101 or above needs to be installed on the PC: <http://www.oracle.com/technetwork/java/javase/downloads/jdk8-downloads-2133151.html>

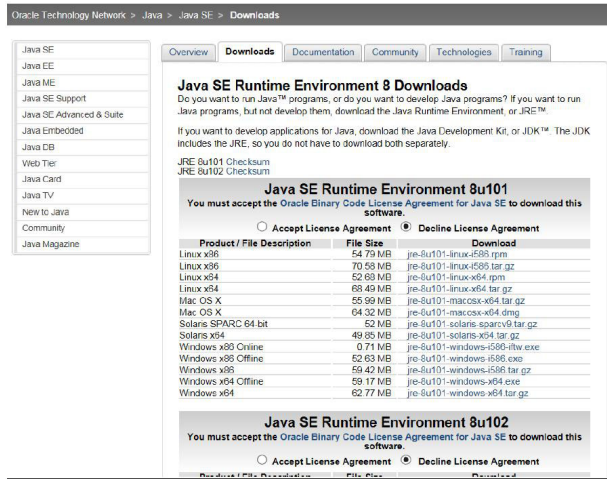


Figure 11. Java

GNUToolchain

The GNU cross compiler needs to be installed to compile the IDK application. Double click on the GNUToolchain.exe to install the cross compiler. *Internet connection is mandatory to install the cross compiler.*

| Name | Date modified | Type | Size |
|--------------------------|---------------|-------------|------------|
| Gnutoolchain.exe | | Application | 163 KB |
| IDK_Installer_x86.exe | | Application | 145,726 KB |
| IDK_Installer_x86_64.exe | | Application | 145,854 KB |

Figure 12. GNU Toolchain Installation (1/5)

Select the “GNU Toolchain” checkbox and click Next.

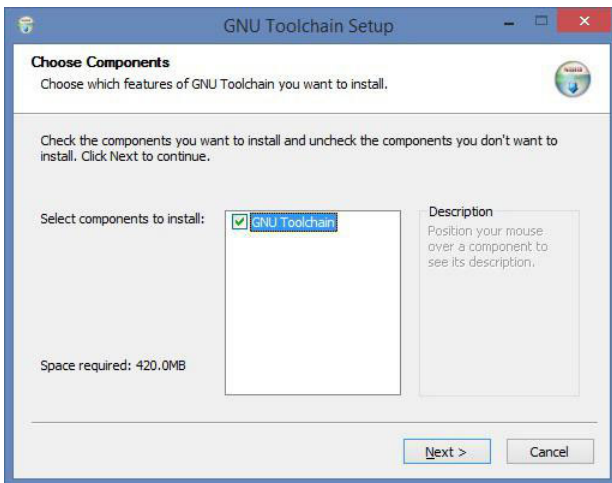


Figure 13. GNU Toolchain Installation (2/5)

Select Destination folder and click Next. *It is recommended to not change installation path.*

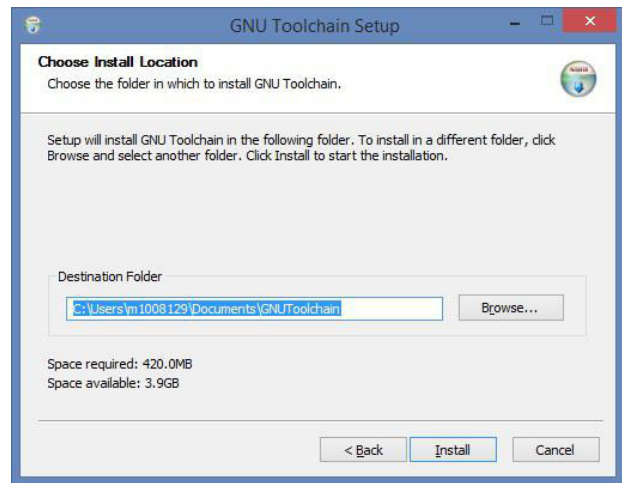


Figure 14. GNU Toolchain Installation (3/5)

Installer automatically downloads toolchain and installs.

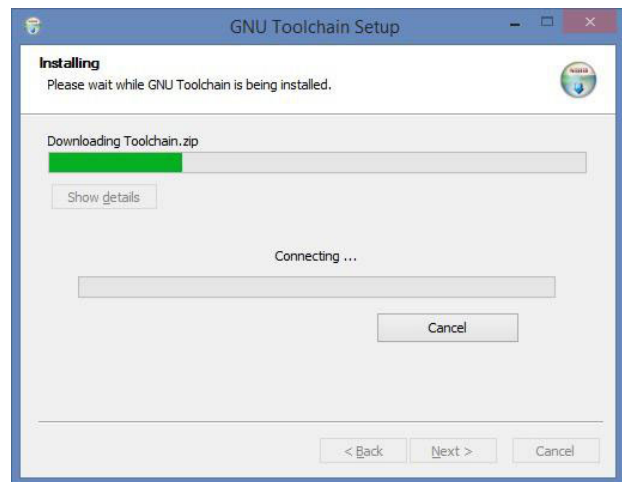


Figure 15. GNU Toolchain Installation (4/5)

GNU Tool chain installation complete.



Figure 16. GNU Toolchain Installation (5/5)

IDK Installation

Double click on the installer downloaded from ON Semiconductor.

For 32 bit machines, install IDK Installer x86.exe. For 64 bit machines, install IDK Installer x86 64.exe



Figure 17. IDK Installation (1/5)

Read the license, check the box and click Next.



Figure 18. IDK Installation (2/5)

Choose the destination directory to install the IDK. *It is recommended to have IDK installed under C:\OnSemiconductor or D:\OnSemiconductor.*

If a previous workspace is being retained, then make sure that metadata folder inside Workspace directory is deleted.

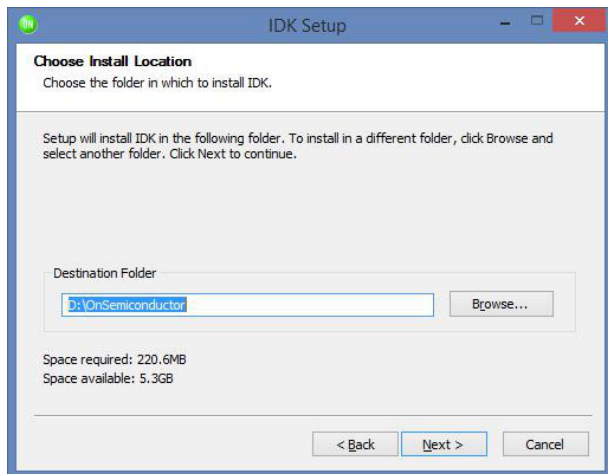


Figure 19. IDK Installation (3/5)

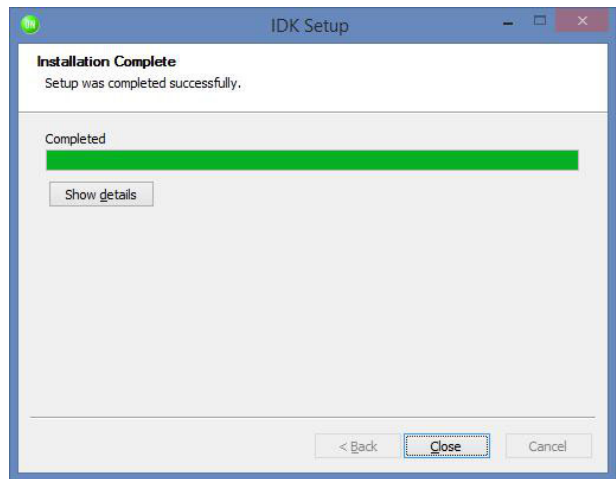


Figure 20. IDK Installation (4/5)

Once in is successfully installed, a shortcut will be created on the desktop.

Double click on the IDK shortcut on the desktop to launch the IDK IDE.

The ON Semiconductor splash screen will launch, followed by the Welcome Screen.

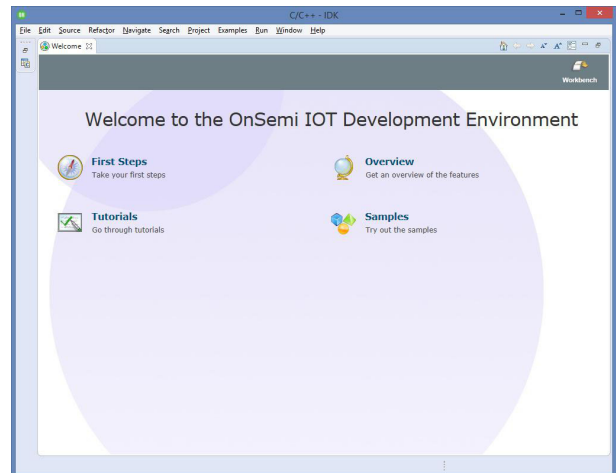


Figure 21. IDK Installation (5/5)

Windows is a registered trademark of Microsoft Corporation. Wi-Fi is a registered trademark of Wi-Fi Alliance. All other brand names and product names appearing in this document are registered trademarks or trademarks of their respective holders.

onsemi, **Onsemi**, and other names, marks, and brands are registered and/or common law trademarks of Semiconductor Components Industries, LLC dba "**onsemi**" or its affiliates and/or subsidiaries in the United States and/or other countries. **onsemi** owns the rights to a number of patents, trademarks, copyrights, trade secrets, and other intellectual property. A listing of **onsemi**'s product/patent coverage may be accessed at www.onsemi.com/site/pdf/Patent-Marking.pdf. **onsemi** is an Equal Opportunity/Affirmative Action Employer. This literature is subject to all applicable copyright laws and is not for resale in any manner.

The evaluation board/kit (research and development board/kit) (hereinafter the "board") is not a finished product and is not available for sale to consumers. The board is only intended for research, development, demonstration and evaluation purposes and will only be used in laboratory/development areas by persons with an engineering/technical training and familiar with the risks associated with handling electrical/mechanical components, systems and subsystems. This person assumes full responsibility/liability for proper and safe handling. Any other use, resale or redistribution for any other purpose is strictly prohibited.

THE BOARD IS PROVIDED BY ONSEMI TO YOU "AS IS" AND WITHOUT ANY REPRESENTATIONS OR WARRANTIES WHATSOEVER. WITHOUT LIMITING THE FOREGOING, ONSEMI (AND ITS LICENSORS/SUPPLIERS) HEREBY DISCLAIMS ANY AND ALL REPRESENTATIONS AND WARRANTIES IN RELATION TO THE BOARD, ANY MODIFICATIONS, OR THIS AGREEMENT, WHETHER EXPRESS, IMPLIED, STATUTORY OR OTHERWISE, INCLUDING WITHOUT LIMITATION ANY AND ALL REPRESENTATIONS AND WARRANTIES OF MERCHANTABILITY, FITNESS FOR A PARTICULAR PURPOSE, TITLE, NON-INFRINGEMENT, AND THOSE ARISING FROM A COURSE OF DEALING, TRADE USAGE, TRADE CUSTOM OR TRADE PRACTICE.

onsemi reserves the right to make changes without further notice to any board.

You are responsible for determining whether the board will be suitable for your intended use or application or will achieve your intended results. Prior to using or distributing any systems that have been evaluated, designed or tested using the board, you agree to test and validate your design to confirm the functionality for your application. Any technical, applications or design information or advice, quality characterization, reliability data or other services provided by **onsemi** shall not constitute any representation or warranty by **onsemi**, and no additional obligations or liabilities shall arise from **onsemi** having provided such information or services.

onsemi products including the boards are not designed, intended, or authorized for use in life support systems, or any FDA Class 3 medical devices or medical devices with a similar or equivalent classification in a foreign jurisdiction, or any devices intended for implantation in the human body. You agree to indemnify, defend and hold harmless **onsemi**, its directors, officers, employees, representatives, agents, subsidiaries, affiliates, distributors, and assigns, against any and all liabilities, losses, costs, damages, judgments, and expenses, arising out of any claim, demand, investigation, lawsuit, regulatory action or cause of action arising out of or associated with any unauthorized use, even if such claim alleges that **onsemi** was negligent regarding the design or manufacture of any products and/or the board.

This evaluation board/kit does not fall within the scope of the European Union directives regarding electromagnetic compatibility, restricted substances (RoHS), recycling (WEEE), FCC, CE or UL, and may not meet the technical requirements of these or other related directives.

FCC WARNING – This evaluation board/kit is intended for use for engineering development, demonstration, or evaluation purposes only and is not considered by **onsemi** to be a finished end product fit for general consumer use. It may generate, use, or radiate radio frequency energy and has not been tested for compliance with the limits of computing devices pursuant to part 15 of FCC rules, which are designed to provide reasonable protection against radio frequency interference. Operation of this equipment may cause interference with radio communications, in which case the user shall be responsible, at its expense, to take whatever measures may be required to correct this interference.

onsemi does not convey any license under its patent rights nor the rights of others.

LIMITATIONS OF LIABILITY: **onsemi** shall not be liable for any special, consequential, incidental, indirect or punitive damages, including, but not limited to the costs of requalification, delay, loss of profits or goodwill, arising out of or in connection with the board, even if **onsemi** is advised of the possibility of such damages. In no event shall **onsemi**'s aggregate liability from any obligation arising out of or in connection with the board, under any theory of liability, exceed the purchase price paid for the board, if any.

The board is provided to you subject to the license and other terms per **onsemi**'s standard terms and conditions of sale. For more information and documentation, please visit www.onsemi.com.

PUBLICATION ORDERING INFORMATION

LITERATURE FULFILLMENT:

Email Requests to: orderlit@onsemi.com

onsemi Website: www.onsemi.com

TECHNICAL SUPPORT

North American Technical Support:

Voice Mail: 1 800-282-9855 Toll Free USA/Canada

Phone: 011 421 33 790 2910

Europe, Middle East and Africa Technical Support:

Phone: 00421 33 790 2910

For additional information, please contact your local Sales Representative