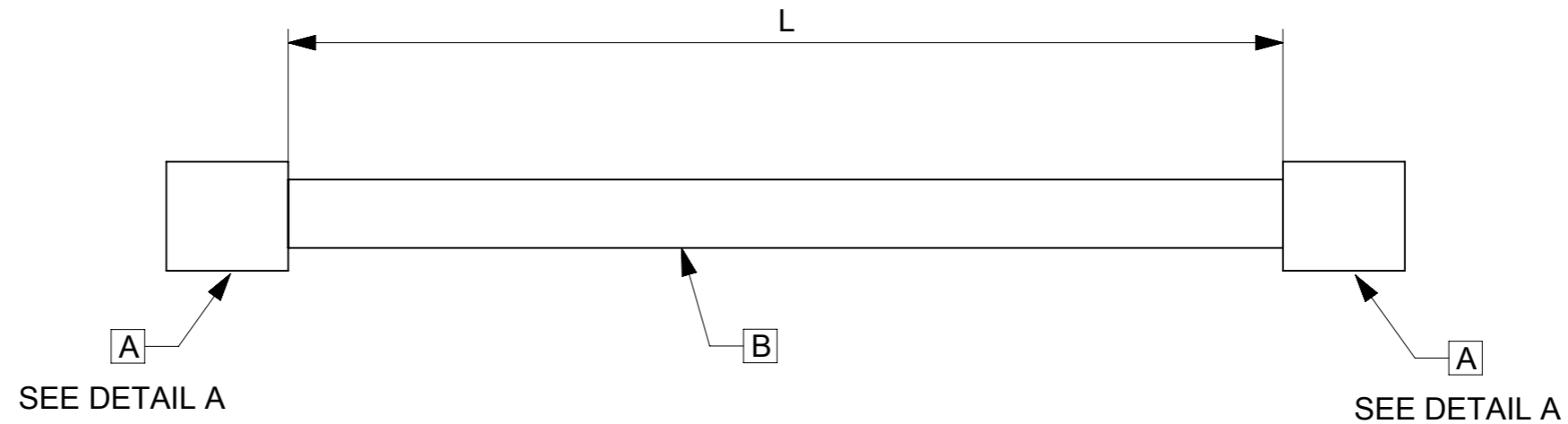


REVISIONS				
EC NO	DATE	REV	DESCRIPTION	CHANGER
	2016.06.20	A	INITIAL RELELASE.	DICK
686785	2021.09.27	A1	REMOVED OBSOLETED PN: 797581016/1017	SUGEEB



THIS DRAWING CONTAINS INFORMATION THAT IS PROPRIETARY TO MOLEX ELECTRONIC TECHNOLOGIES, LLC AND SHOULD NOT BE USED WITHOUT WRITTEN PERMISSION											
DIMENSION UNITS	SCALE	CURRENT REV DESC: OBSOLETED PART NUMBER AS PER PCN#509451			molex						
mm	NTS										
GENERAL TOLERANCES (UNLESS SPECIFIED)					SEE TABLE						
ANGULAR TOL	±	°			PRODUCT CUSTOMER DRAWING						
4 PLACES	±	EC NO: 686785			DOCUMENT NUMBER						
3 PLACES	±	DRWN: SUGEEB			2021/09/27			DOC TYPE		DOC PART	REVISION
2 PLACES	±	CHK'D: GGA			2022/02/28			PSD		000	A1
1 PLACE	±	APPR: GGA			2022/02/28						
0 PLACES	±	INITIAL REVISION:			2016/05/19						
DRAFT WHERE APPLICABLE MUST REMAIN WITHIN DIMENSIONS		THIRD ANGLE PROJECTION		DRAWING	SERIES	MATERIAL NUMBER	CUSTOMER	SHEET NUMBER			
				A3-SIZE	201234	SEE TABLE	GENERAL MARKET	1 OF 3			


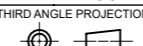
DOCUMENT STATUS	P1	RELEASE DATE	2022/02/28	11:53:34
-----------------	----	--------------	------------	----------

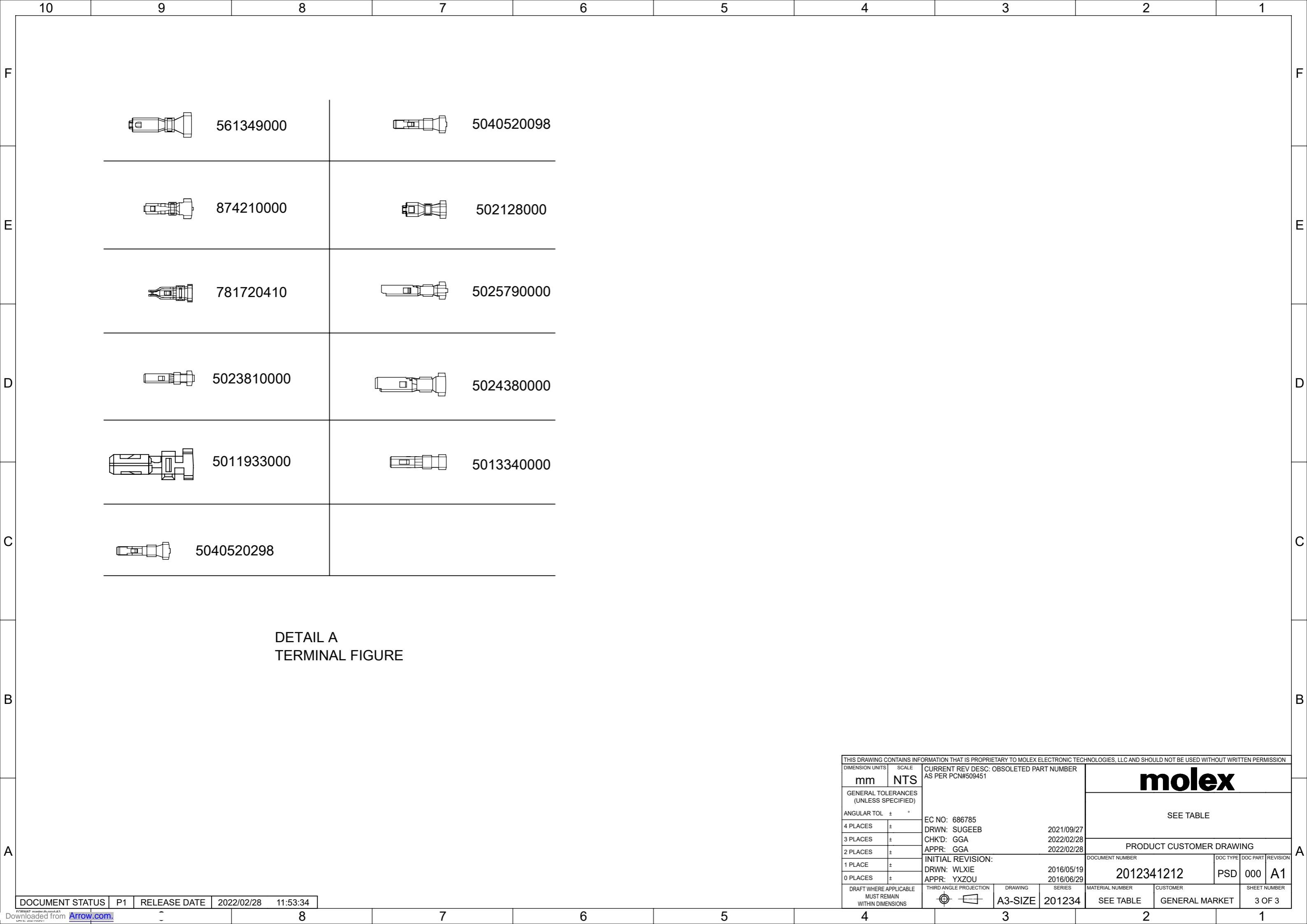
TABLE							
PART NUMBER	L(MM)	TITLE	ITEM	DESCRIPTION	Q'TY	PPQ	DU
797581001	150±5	Micro-Clasp 150mm	A	2.0 WtB Crimp Rec Chain 561349000	2	50	3000
			B	24AWG;PLATED;PVC;BK;OD=1.43MM;UL1007	A/R		
797581002	300±5	Micro-Clasp 300mm	A	2.0 WtB Crimp Rec Chain 561349000	2	50	3000
			B	24AWG;PLATED;PVC;BK;OD=1.43MM;UL1007	A/R		
797581003	150±5	Pico-Lock 150mm	A	1.5 W/B REC TERMINAL AWG#24-28AWG 5040520098	2	50	3000
			B	24AWG;PLATED;PVC;BK;OD=1.10MM;UL1061	A/R		
797581004	300±5	Pico-Lock 300mm	A	1.5 W/B REC TERMINAL AWG#24-28AWG 5040520098	2	50	3000
			B	24AWG;PLATED;PVC;BK;OD=1.10MM;UL1061	A/R		
797581005	150±5	Pico-Lock 150mm	A	1.5 W/B REC TERMINAL AWG#30-32AWG 5040520298	2	50	3000
			B	30AWG;PLTD;PVC;BK;OD=0.55MM;UL1571	A/R		
797581006	300±5	Pico-Lock 300mm	A	1.5 W/B REC TERMINAL AWG#30-32AWG 5040520298	2	50	3000
			B	30AWG;PLTD;PVC;BK;OD=0.55MM;UL1571	A/R		
797581007	300±5	Pico-Spox 300mm	A	1.5mm Rcpt Term Crim 2.5Sn 874210000	2	50	3000
			B	24AWG;PLATED;PVC;BK;OD=1.10MM;UL1061	A/R		
797581008	150±5	Dura-Click 150mm	A	2.0 WtB Rec Term 502128000	2	50	3000
			B	26AWG;PLATED;PVC;BK;OD=1.00MM;UL1061	A/R		
797581009	300±5	Dura-Click 300mm	A	2.0 WtB Rec Term 502128000	2	50	3000
			B	26AWG;PLATED;PVC;BK;OD=1.00MM;UL1061	A/R		
797581010	300±5	Pico-Ezmate 300mm	A	1.2MM WTB RECEIPT CRIMP TERM H>F 781720410	2	50	3000
			B	28AWG;PLATED;ETFE;WHT;OD=0.57mm;UL1516	A/R		
797581011	300±5	Click-Mate 300mm	A	1.5 W/B Single Plg Term Chain W/Plt 5025790000	2	50	3000
			B	24AWG;PLATED;PVC;BK;OD=1.10MM;UL1061	A/R		
797581012	150±5	Click-Mate 150mm	A	1.25 W/B Single Plg Term W/Plt 5023810000	2	50	3000
			B	UL&CSA 1061/#28 STR BLK	A/R		
797581013	300±5	Click-Mate 300mm	A	1.25 W/B Single Plg Term W/Plt 5023810000	2	50	3000
			B	UL&CSA 1061/#28 STR BLK	A/R		
797581014	150±5	Click-Mate 150mm	A	2.0 W/B Single Plug Term W/Plt Chain 5024380000	2	50	3000
			B	24AWG;PLATED;PVC;BK;OD=1.10MM;UL1061	A/R		
797581015	300±5	Click-Mate 300mm	A	2.0 W/B Single Plug Term W/Plt Chain 5024380000	2	50	3000
			B	24AWG;PLATED;PVC;BK;OD=1.10MM;UL1061	A/R		
797581018	150±5	Pico-Clasp 150mm	A	1.0 WtB Crimp Rec Term Chn 5013340000	2	50	3000
			B	28AWG;PLTD;PVC;BLK;OD=0.6mm;UL1571	A/R		
797581019	300±5	Pico-Clasp 300mm	A	1.0 WtB Crimp Rec Term Chn 5013340000	2	50	3000
			B	28AWG;PLTD;PVC;BLK;OD=0.6mm;UL1571	A/R		
797581020	150±5	Sherlock 150mm	A	2.0 WtB Rec Term 502128000	2	50	3000
			B	26AWG;PLATED;PVC;BK;OD=1.00MM;UL1061	A/R		
797581021	300±5	Sherlock 300mm	A	2.0 WtB Rec Term 502128000	2	50	3000
			B	26AWG;PLATED;PVC;BK;OD=1.00MM;UL1061	A/R		

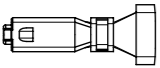
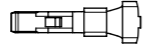
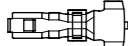
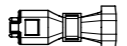

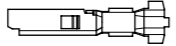
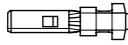
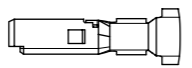
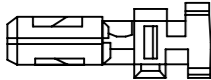
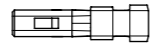
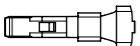
SEE NOTE 2,3

NOTE:

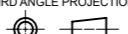
1. THIS PRODUCT MUST MEET 2011/65/EU ROHS COMPLIANCE.
此产品需符合 2011/65/EU ROHS环保要求.
2. PPQ: THE AMOUNT OF CABLES PER BAG.
每袋产品数量.
3. DU : THE MINIMUM LINE QUANTITY TO BUY.
最小购买数量.
4. STICK UL LABEL ON THE OUTSIDE CARTON.
外箱上贴UL标签.

THIS DRAWING CONTAINS INFORMATION THAT IS PROPRIETARY TO MOLEX ELECTRONIC TECHNOLOGIES, LLC AND SHOULD NOT BE USED WITHOUT WRITTEN PERMISSION									
DIMENSION UNITS	SCALE	CURRENT REV DESC: OBSOLETE PART NUMBER AS PER PCN#509451							
mm	NTS	 <p>SEE TABLE</p>							
GENERAL TOLERANCES (UNLESS SPECIFIED)									
ANGULAR TOL	± °	EC NO: 686785							
4 PLACES	±	DRWN: SUGEEB 2021/09/27							
3 PLACES	±	CHK'D: GGA 2022/02/28							
2 PLACES	±	APPR: GGA 2022/02/28							
1 PLACE	±	INITIAL REVISION:							
0 PLACES	±	DRWN: WLXIE 2016/05/19							
DRAFT WHERE APPLICABLE MUST REMAIN WITHIN DIMENSIONS		THIRD ANGLE PROJECTION		DRAWING	SERIES	MATERIAL NUMBER	CUSTOMER	DOCUMENT NUMBER	DOC TYPE
				A3-SIZE	201234	SEE TABLE	GENERAL MARKET	2012341212	PSD
								DOC PART	REVISION
								000	A1
								SHEET NUMBER	
								2 OF 3	



	561349000		5040520098
	874210000		502128000
	781720410		5025790000
	5023810000		5024380000
	5011933000		5013340000
	5040520298		

DETAIL A
TERMINAL FIGURE

THIS DRAWING CONTAINS INFORMATION THAT IS PROPRIETARY TO MOLEX ELECTRONIC TECHNOLOGIES, LLC AND SHOULD NOT BE USED WITHOUT WRITTEN PERMISSION										
DIMENSION UNITS	SCALE	CURRENT REV DESC: OBSOLETE PART NUMBER AS PER PCN#509451			molex					
mm	NTS									
GENERAL TOLERANCES (UNLESS SPECIFIED)					SEE TABLE					
ANGULAR TOL	±	°			PRODUCT CUSTOMER DRAWING					
4 PLACES	±	EC NO: 686785	DRWN: SUGEEB	2021/09/27	DOCUMENT NUMBER 2012341212					
3 PLACES	±	CHK'D: GGA	2022/02/28	APPR: GGA						2022/02/28
2 PLACES	±	INITIAL REVISION:								
1 PLACE	±	DRWN: WLXIE	2016/05/19	APPR: YXZOU	2016/06/29	DOC TYPE	DOC PART	REVISION		
0 PLACES	±				PSD	000	A1			
DRAFT WHERE APPLICABLE MUST REMAIN WITHIN DIMENSIONS	THIRD ANGLE PROJECTION	DRAWING	SERIES	MATERIAL NUMBER	CUSTOMER	SHEET NUMBER				
		A3-SIZE	201234	SEE TABLE	GENERAL MARKET	3 OF 3				