



**Part Number :** [39299067](#)

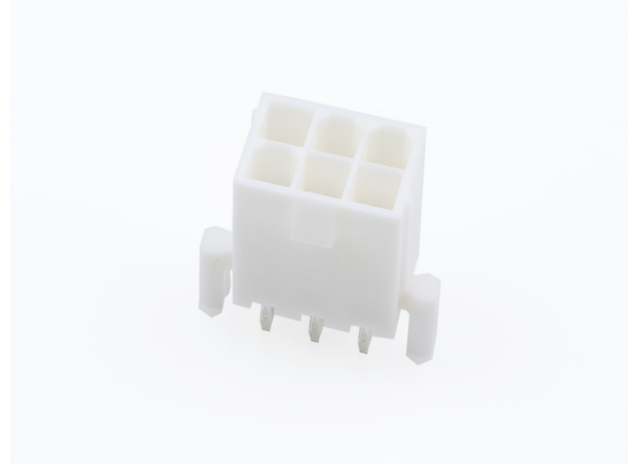
**Product Description :** Mini-Fit Jr. Vertical Header, 4.20mm Pitch, Dual Row, 6 Circuits, with Snap-in Plastic Peg PCB Lock, Tin, Natural

**Series Number :** 5566

**Status :** Active

**Product Category :** PCB Headers and Receptacles

**Engineering Number :** A-5566-06A2-210



---

## Documents & Resources

### Drawings

[Drawing 039299067\\_sd.pdf](#)

[Packaging Design Drawing PK-5566-001-001.pdf](#)

### 3D Models and Design Files

[3D Model 039299067\\_stp.zip](#)

### Specifications

[Application Specification 1722990000-AS-000.pdf](#)

[Product Specification PS-5556-001-001.pdf](#)

[Test Summary TS-5556-002-001.pdf](#)

[Test Summary TS-5566-002-001.pdf](#)

---

## Product Environment Compliance

### Compliance

|                    |  |
|--------------------|--|
| GADSL/IMDS         | Compliant with Exemption 44                    |
| China RoHS         |  |
| EU ELV             | Not Relevant                                   |
| Low-Halogen Status | Low-Halogen per IEC 61249-2-21                 |
| REACH SVHC         | Not Contained per D(2023)3788-DC (14 Jun 2023) |
| EU RoHS            | Compliant per EU 2015/863                      |

### [Multiple Part Product Compliance Statements](#)

- Eu RoHS
- REACH SVHC
- Low-Halogen

#### Multiple Part Industry Compliance Documents

- IPC 1752A Class C
- IPC 1752A Class D
- Molex Product Compliance Declaration
- IEC-62474
- chemSHERPA (xml)

#### EU RoHS Certificate of Compliance

---

### Part Details

#### General

|                |   |
|----------------|---|
| Status         | Active  |
| Category       | PCB Headers and Receptacles   |
| Series         | 5566  |
| Description    | Mini-Fit Jr. Vertical Header, 4.20mm Pitch, Dual Row, 6 Circuits, with Snap-in Plastic Peg PCB Lock, Tin, Natural   |
| Application    | Power, Wire-to-Board  |
| Comments       | The 5566 header should be used with standard Mini-Fit female terminals. If increased amperage of up to 13A per circuit is needed, please consider using the Mini-Fit Plus HCS family 45750 terminals with 46015 headers; See Molex Product specification PS-5666-001 for current de-rating information. |
| Component Type | PCB Header  |
| Product Family | Mini-Fit Family Power Connectors  |
| Product Name   | Mini-Fit Jr.  |
| UPC            | 800753579972  |

#### Agency

|     |         |
|-----|---------|
| CSA | LR19980 |
| UL  | E29179  |

#### Electrical

|                               |      |
|-------------------------------|------|
| Current - Maximum per Contact | 9.0A |
|-------------------------------|------|

|                   |      |
|-------------------|------|
| Voltage - Maximum | 600V |
|-------------------|------|

## Physical

|                                |                |
|--------------------------------|----------------|
| Breakaway                      | No             |
| Circuits (Loaded)              | 6              |
| Circuits (maximum)             | 6              |
| Color - Resin                  | Natural        |
| Durability (mating cycles max) | 30             |
| First Mate / Last Break        | No             |
| Flammability                   | 94V-0          |
| Glow-Wire Capable              | No             |
| Guide to Mating Part           | No             |
| Keying to Mating Part          | None           |
| Lock to Mating Part            | Yes            |
| Material - Metal               | Brass          |
| Material - Plating Mating      | Tin            |
| Material - Plating Termination | Tin            |
| Material - Resin               | Nylon          |
| Net Weight                     | 1.412/g        |
| Number of Rows                 | 2              |
| Orientation                    | Vertical       |
| Packaging Type                 | Tray           |
| PC Tail Length                 | 3.50mm         |
| PCB Locator                    | Yes            |
| PCB Retention                  | Yes            |
| PCB Thickness - Recommended    | 1.60mm         |
| Pitch - Mating Interface       | 4.20mm         |
| Pitch - Termination Interface  | 4.20mm         |
| Plating min - Mating           | 0.889µm        |
| Plating min - Termination      | 0.889µm        |
| Polarized to Mating Part       | Yes            |
| Polarized to PCB               | Yes            |
| Shrouded                       | Fully          |
| Stackable                      | No             |
| Temperature Range - Operating  | -40° to +105°C |

|                             |              |
|-----------------------------|--------------|
| Termination Interface Style | Through Hole |
|-----------------------------|--------------|

### Solder Process Data

|                              |      |
|------------------------------|------|
| Max-Duration                 | 5    |
| Lead-Free Process Capability | WAVE |
| Max-Cycle                    | 1    |
| Max-Temp                     | 240  |

---

### Mates With / Use With

#### Mates with Part(s)

| Description  | Part Number   |
|--|---------------|
| Mini-Fit Jr. Receptacle Housings   | <u>5557</u>   |
| Mini-Fit TPA2-to-Mini-Fit TPA2 Off-the-Shelf (OTS) Cable Assemblies          | <u>45135</u>  |
| Mini-Fit TPA2 and Mini-Fit Sigma Dual Row Receptacle Housings                | <u>172708</u> |
| Mini-Fit Jr.-to-Mini-Fit Jr. Off-the-Shelf (OTS) Overmolded Cable Assemblies | <u>245135</u> |

---

This document was generated on Feb 12, 2024