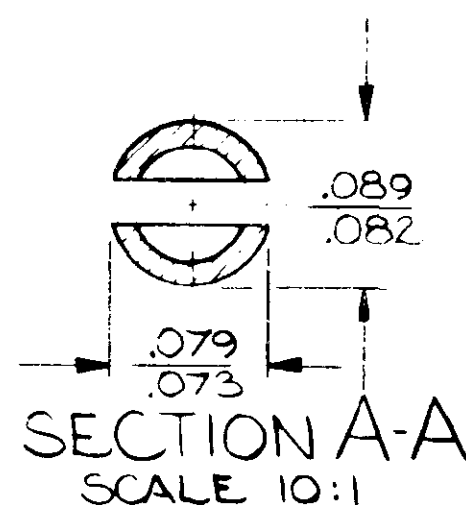
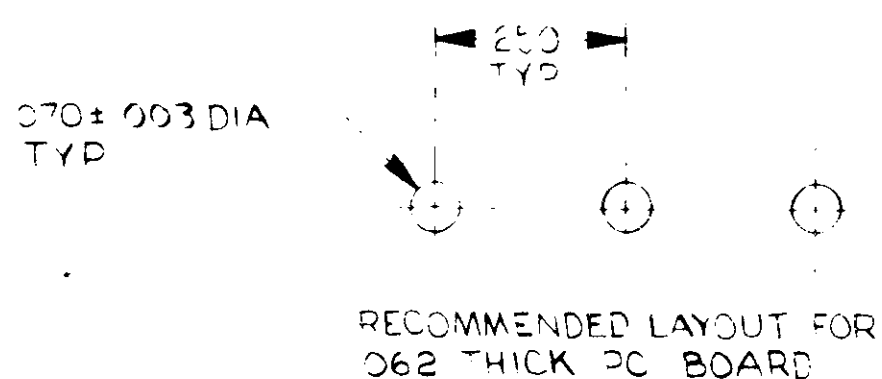
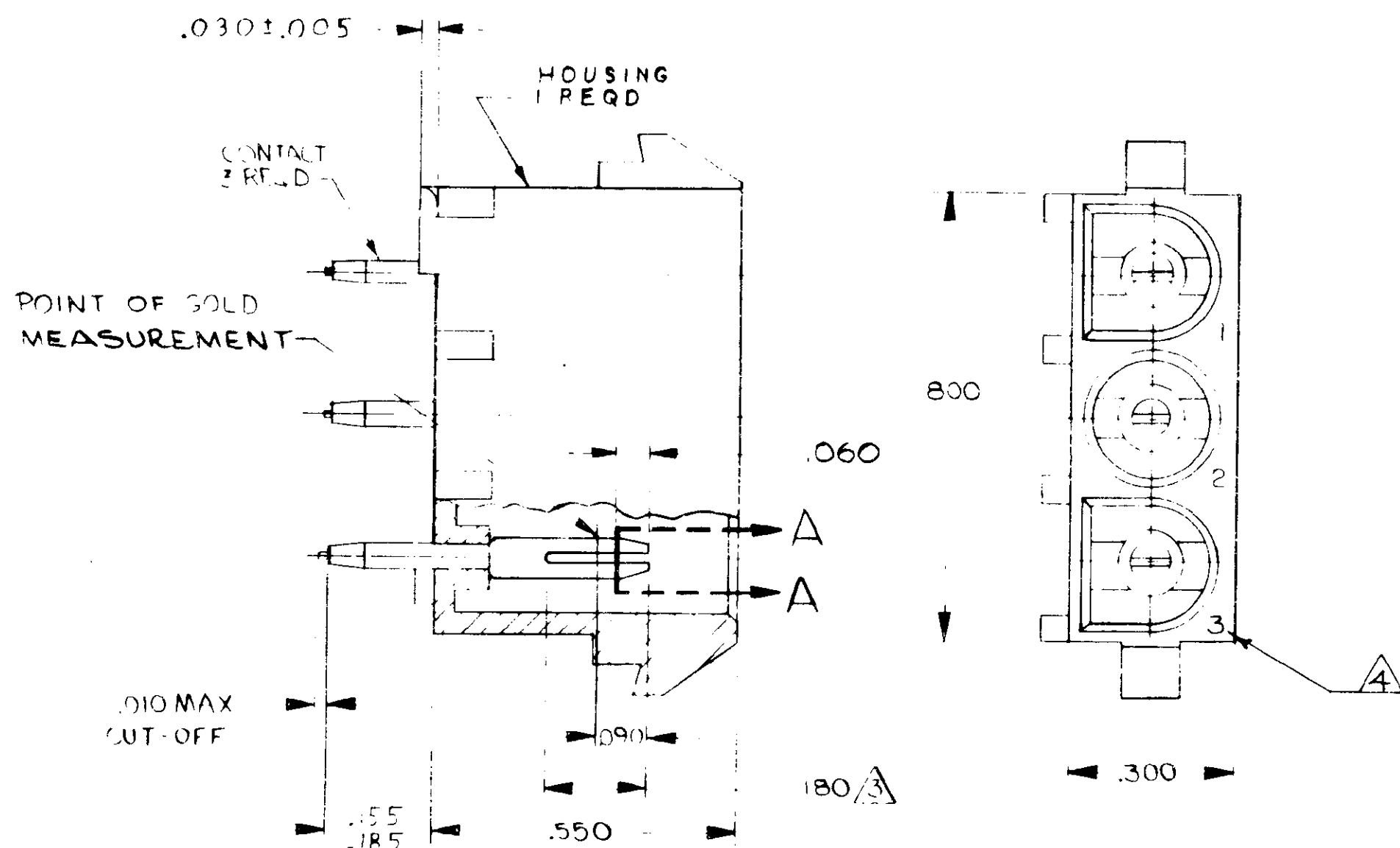


THIS DRAWING IS UNPUBLISHED. RELEASED FOR PUBLICATION 19
 © COPY RIGHT 1973 BY AMP INCORPORATED, HARRISBURG, PA. ALL INTERNATIONAL RIGHTS RESERVED. AMP PRODUCTS MAY BE COVERED BY U.S. AND FOREIGN PATENTS AND/OR PATENTS PENDING.

REVISIONS						
P	F	ZONE	LTR	DESCRIPTION	DATE	APPROVED
			M	REDRAWN PER ECN M-7157 AND M-7384	8-16-83	DLC
			M	RESTORED	9-14-83	EB ST
			N	OBSOLETE 1-1, 1-2, 2-2, 3-1, 3-2, 4-1, 4-2, 5-1, 5-2, 6-1, 6-2, 7-1, 7-2, 8-1, 8-2, 9-1, 9-2 CM473	4-4-86	KW/RS
			P	OBSOLETE -3 PER CM-947	7-14-87	PKC
			R	REVISED PER CM-1520	5-9-88	PH RS
			S	OBSOLETE 2-1 PER CM-932	6-6-88	PH RS
			T	REVISED PER EC 0730-4064-93	2-10-93	LHS
			U	REVISED PER EC 0730-4181-93	7-2-93	LHS
			V	REV PER EC 0730-0111-95	8-23-95	JH RS



- 1 MATES WITH HOUSING 480700.
- 2 PARTS COMPLY TO AMP SOLDERABILITY SPECIFICATION 109-11-3
- 3 CONTACT IS PLATED OVERALL WITH .000050 NICKEL, THEN .000030 GOLD OVER CONTACT LENGTH INDICATED AND MATTE TIN ON SOLDER TAILEND.
- 4 CIRCUIT IDENTIFICATION CHARACTERS ARE ADJACENT TO THE INDICATED CAVITIES, BUT LOCATION AND ORIENTATION MAY DIFFER FROM PRINT.

PH BRZ - GOLD	NYLON - NATURAL	350429-2
PH BRZ - PRE-TIN	NYLON - NATURAL	350429-1
FIN MATL & FINISH	HSG MATL & COLOR	PART NO

UNLESS OTHERWISE SPECIFIED DIMENSIONS ARE IN INCHES. TOLERANCES ON DECIMALS ±.015 ANGLES 1/2°	CONTRACT NO		AMP AMP INCORPORATED Harrisburg, Pa. 17105	
	DR. <i>Amper</i> 2-5-83			
MATERIAL SEE TABLE	CHK	NAME PC. BOARD HEADER, 3 CIRCUIT, UNIVERSAL MATE-N-LOCK™		
	APPD	SIZE	FSCM NO	DRAWING NO
FINISH SEE TABLE	USGN APPD	C	00779	350429
	OFFIC R APPD	SCALE	4:1	SHEET

350429