



# IDM260-411S RS232 Kit

IDM

MOBILE HANDHELD SCANNERS

**SICK**  
Sensor Intelligence.



### Ordering information

Type	Part no.
IDM260-411S RS232 Kit	6080741

**Included in delivery:** IDM260-411S (1), Connection cable (1)

Other models and accessories → [www.sick.com/IDM](http://www.sick.com/IDM)



### Detailed technical data

#### Features

<b>Application</b>	Industrial application
<b>Scanner design</b>	Cable connection variant
<b>Sensor resolution</b>	1,280 px x 800 px
<b>Light source</b>	LED, Visible, Red, 660 nm
<b>Alignment aid</b>	Laser, Red, 630 nm
<b>Reading distance</b>	30 mm ... 400 mm
<b>Code resolution</b>	≥ 0.07 mm <sup>1)</sup> ≥ 0.13 mm <sup>2)</sup>

<sup>1)</sup> Valid for Code 39.

<sup>2)</sup> Valid for Data Matrix code.

#### Mechanics/electronics

<b>Supply voltage</b>	5 V DC, ± 10 %
<b>Current consumption</b>	Operation (vibration deactivated): 395 mA Operation (vibration activated): 420 mA Standby: 220 mA
<b>Housing color</b>	Blue, gray
<b>Enclosure rating</b>	IP65
<b>Weight</b>	208 g, without cable
<b>Dimensions (L x W x H)</b>	104 mm x 76.3 mm x 176 mm
<b>MTBF</b>	100,000 h

#### Performance

<b>Readable code structures</b>	1D codes, 2D codes, Stacked
<b>Bar code types</b>	Code 39, Code 39 Full ASCII, Code 32, Code 128, GS1-128, Codabar, Code 11, Code 93, GS1 DataBar, Standard and Industrial 2 of 5, Interleaved & Matrix 2 of 5, IATA, UPC / EAN / JAN, UPC / EAN / JAN (with addition), Telepen, MSI/Plessey, UK/Plessey, Australian Post, China Post, German Post, US Planet, US Postnet, British Post, Intelligent Mail, Japan Post, Korea Post, Dutch KIX Post, Posi LAPA 4 State Code
<b>2D code types</b>	Data Matrix, MaxiCode, QR code, Aztec, MicroQR-Code, GS1 QR code, GS1 Data-Matrix

<b>Stacked code types</b>	PDF417, MicroPDF417, Code 49, Code 16K, Composite, Codablock F
---------------------------	--

### Interfaces

<b>Ethernet</b>	✓, TCP/IP
Type of fieldbus integration	Optional, over external connection module CDF600-2
<b>PROFINET</b>	✓
Type of fieldbus integration	Optional over external fieldbus module CDF600-2
Function	PROFINET Single Port, PROFINET Dual Port
<b>EtherCAT</b>	✓
Type of fieldbus integration	Optional over external fieldbus module CDF600
<b>Serial</b>	✓, RS-232
<b>PROFIBUS DP</b>	✓
Type of fieldbus integration	Optional over external fieldbus module CDF600-2
<b>Optical indicators</b>	2 LEDs (operational status, good read)
<b>Acoustic indicators</b>	Beeper, can be switched off
<b>Vibration</b>	Yes
<b>Configuration software</b>	IDM Setup Tool

### Ambient data

<b>Shock resistance</b>	50 drops from 2 m height on concrete
<b>Ambient operating temperature</b>	-20 °C ... +50 °C
<b>Storage temperature</b>	-40 °C ... +70 °C
<b>Permissible relative humidity</b>	95 %, Non-condensing
<b>Ambient light immunity</b>	100,000 lx

### General notes

<b>Note</b>	A connecting cable and possibly a power supply unit are still required for commissioning. Not free of paint wetting impairment substances.
-------------	--

### Classifications

<b>eCl@ss 5.0</b>	27280101
<b>eCl@ss 5.1.4</b>	27280101
<b>eCl@ss 6.0</b>	27280101
<b>eCl@ss 6.2</b>	27280101
<b>eCl@ss 7.0</b>	27280101
<b>eCl@ss 8.0</b>	27280101
<b>eCl@ss 8.1</b>	27280101
<b>eCl@ss 9.0</b>	27280101
<b>eCl@ss 10.0</b>	27280101
<b>eCl@ss 11.0</b>	27280101
<b>eCl@ss 12.0</b>	27280101
<b>ETIM 5.0</b>	EC002550
<b>ETIM 6.0</b>	EC002550
<b>ETIM 7.0</b>	EC002550
<b>ETIM 8.0</b>	EC002550

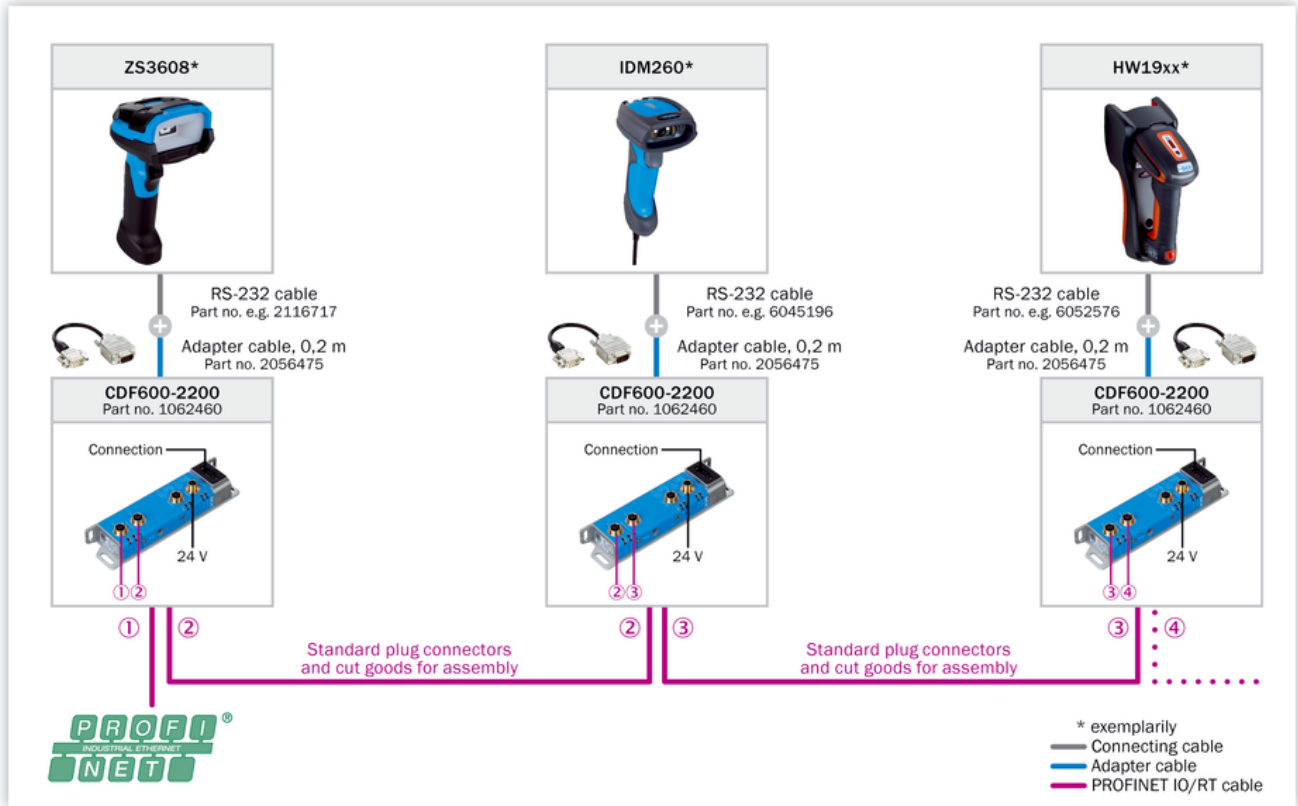
UNSPSC 16.0901

43211701

### Connection diagram

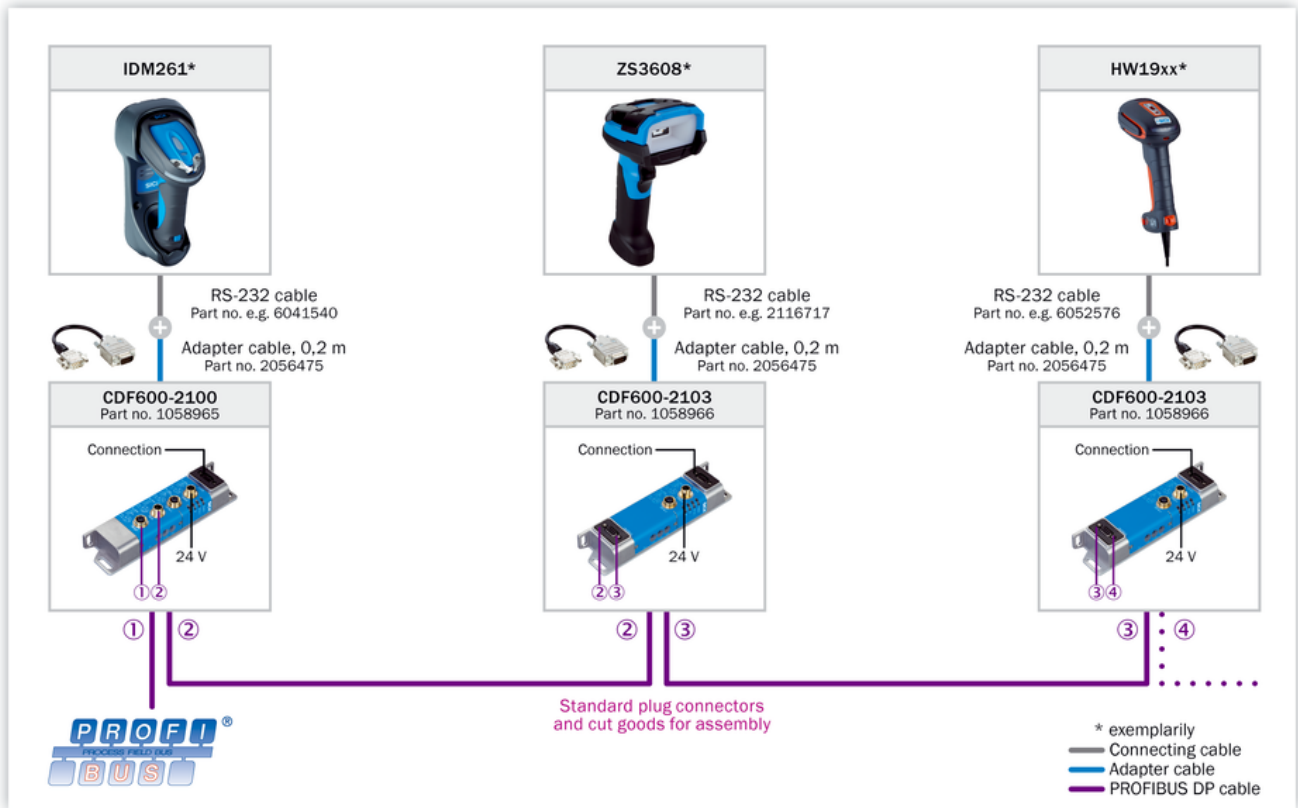
PROFINET IO/RT

#### PROFINET IO/RT



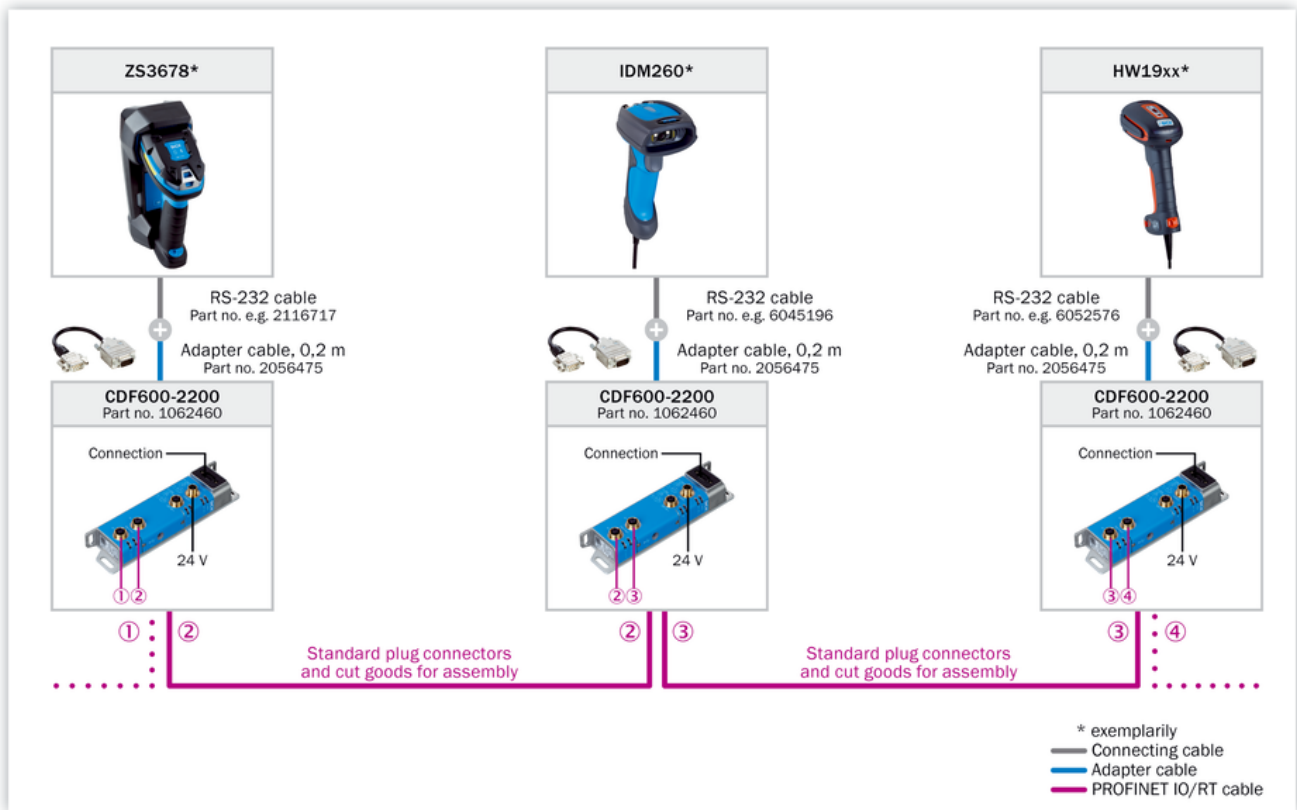
PROFIBUS DP

PROFIBUS DP



Ethernet TCP/IP

### Ethernet TCP/IP



EtherCAT®

EtherCAT®



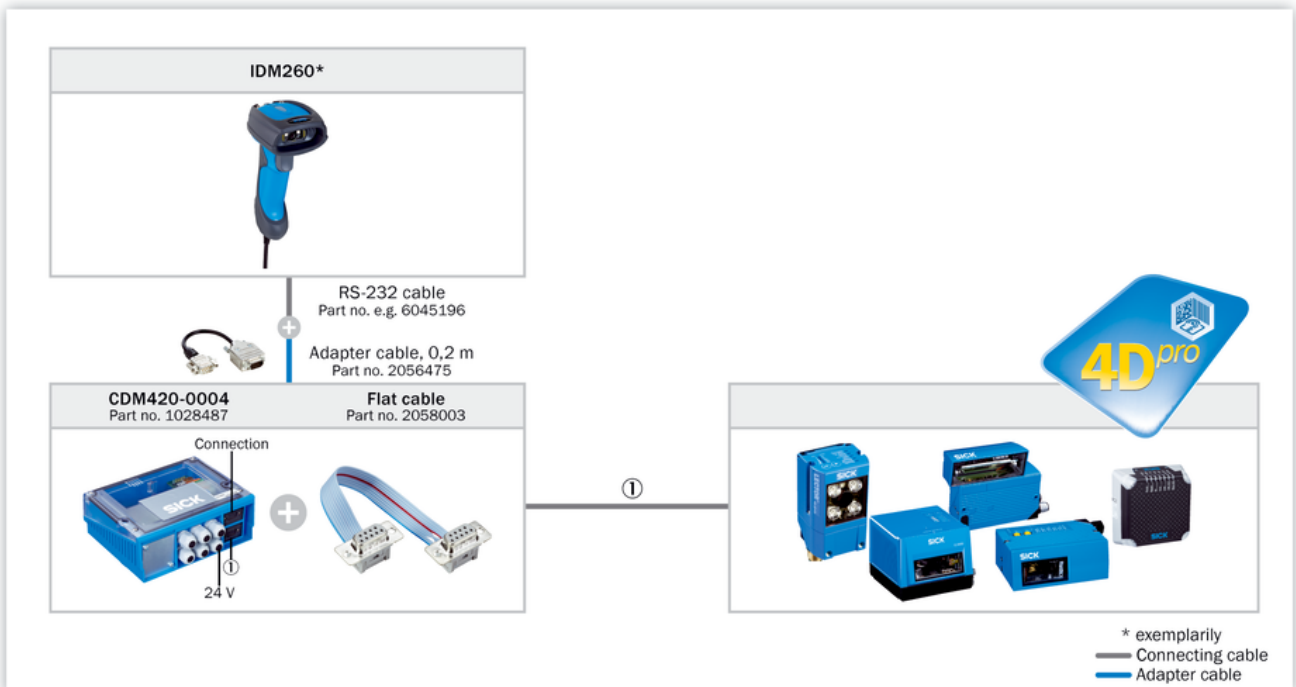
DeviceNet™

DeviceNet™



AUX looping

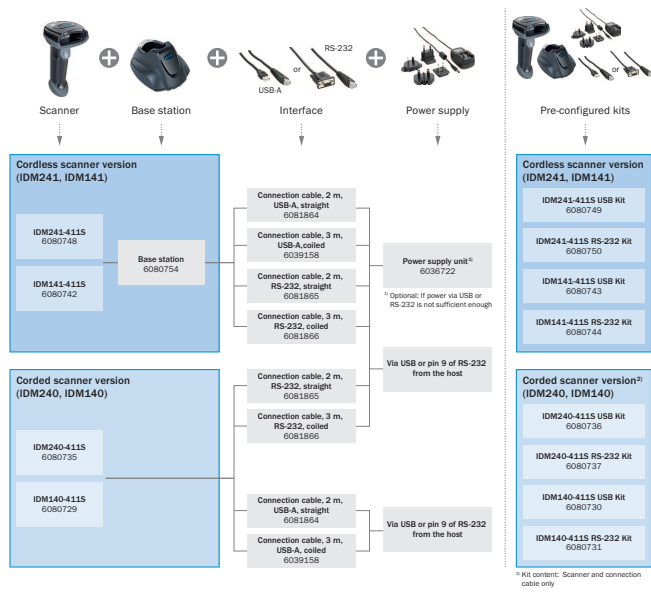
Looping-in via AUX



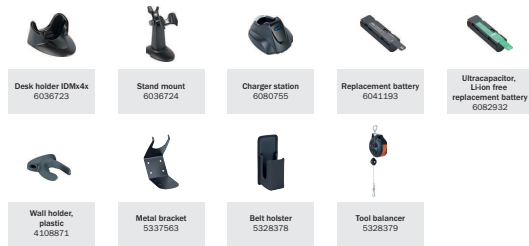


## Selection Guide

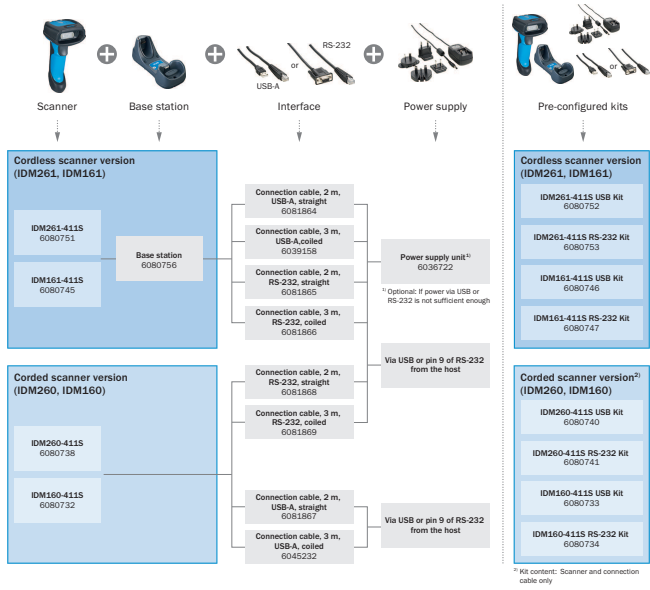
### IDMx4x



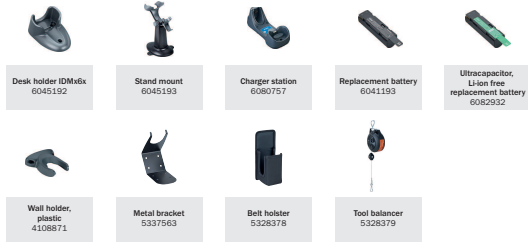
#### Accessories



### IDMx6x



### Accessories





## Recommended services

Additional services → [www.sick.com/IDM](http://www.sick.com/IDM)

	Type	Part no.
<b>Extended warranty</b>		
<ul style="list-style-type: none"> <li><b>Product area:</b> Identification solutions, machine vision, Distance sensors, Detection and ranging solutions</li> <li><b>Range of services:</b> The services correspond to the scope of the statutory manufacturer warranty (SICK general terms of delivery).</li> <li><b>Duration:</b> Five-year warranty from delivery date.</li> </ul>	Extended warranty for a total of five years from delivery date	1680671

## SICK AT A GLANCE

SICK is one of the leading manufacturers of intelligent sensors and sensor solutions for industrial applications. A unique range of products and services creates the perfect basis for controlling processes securely and efficiently, protecting individuals from accidents and preventing damage to the environment.

We have extensive experience in a wide range of industries and understand their processes and requirements. With intelligent sensors, we can deliver exactly what our customers need. In application centers in Europe, Asia and North America, system solutions are tested and optimized in accordance with customer specifications. All this makes us a reliable supplier and development partner.

Comprehensive services complete our offering: SICK LifeTime Services provide support throughout the machine life cycle and ensure safety and productivity.

For us, that is “Sensor Intelligence.”

## WORLDWIDE PRESENCE:

Contacts and other locations –[www.sick.com](http://www.sick.com)