

- 1
- 2
- 3
- 4
- 5
- 6
- 7
- 8
- 9
- 10
- 11
- 12
- 13
- 14
- 15
- 16
- 17
- 18

MATERIAL

Die-cast zinc alloy.

COLOUR

Black epoxy resin coating, matte finish.

ROTATING PIN

AISI 303 stainless steel.

WASHER

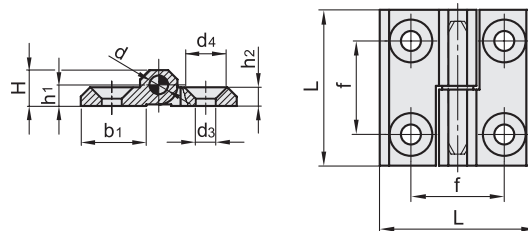
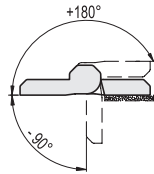
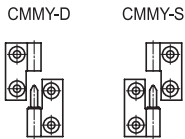
Polyamide based (PA) technopolymer.

STANDARD EXECUTIONS

- **CMMY-D**: pin fixed to the right body.
- **CMMY-S**: pin fixed to the left body.

ROTATION ANGLE (APPROXIMATE VALUE)

Max 270° (-90° and +180° being 0° the condition where the two interconnected surfaces are on the same plane).
Do not exceed the rotation angle limit so as not to prejudice the hinge mechanical performance.



CMMY-D

Code	Description	L	d3	d4	f	H	h1	h2	b1	d	⚖️
428801	CMMY.40-SH-5-D	40	5.3	10.5	25	9	5.5	5	16	4	40
428811	CMMY.50-SH-6-D	50	6.4	12.5	30	11.5	6.5	6	21	6	80
428821	CMMY.60-SH-8-D	60	8.3	16.5	36	15	8.5	8	26	8	153

CMMY-S

Code	Description	L	d3	d4	f	H	h1	h2	b1	d	⚖️
428802	CMMY.40-SH-5-S	40	5.3	10.5	25	9	5.5	5	16	4	41
428812	CMMY.50-SH-6-S	50	6.4	12.5	30	11.5	6.5	6	21	6	83
428822	CMMY.60-SH-8-S	60	8.3	16.5	36	15	8.5	8	26	8	156