

FEATURES AND SPECIFICATIONS

Features and Benefits

- High current
- Fully polarized
- Positive locks
- Low engagement force
- Wire-to-wire, wire-to-board

Reference Information

Product Specification: PS-42815-0001

Packaging: Bag

UL File No.: E29179

CSA File No.: LR19980

TUV License No.: R9751144

Mates With: 42816 receptacle

Use With: 42817 terminal

Designed In: Millimeters

Electrical

Voltage: 600V

Current: 49.0A max.

Mechanical

Contact Insertion Force: 5.0kg max.

Contact Retention to Housing: 9.0kg min.

Wire Pull-Out Force: 12 AWG—31.0kg

Insertion Force to PCB: 2.0kg max.

Mating Force: 1.0kg max.

Unmating Force: 0.5kg min.

Normal Force: 200g min.

Durability: 30 cycles

Physical

Housing: Polyester

Contact: Copper Alloy

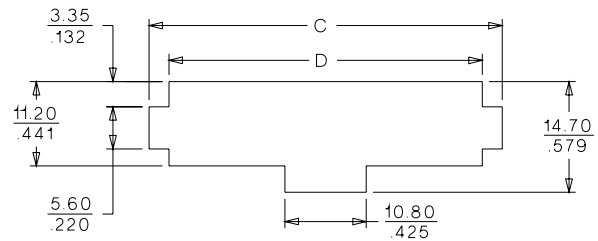
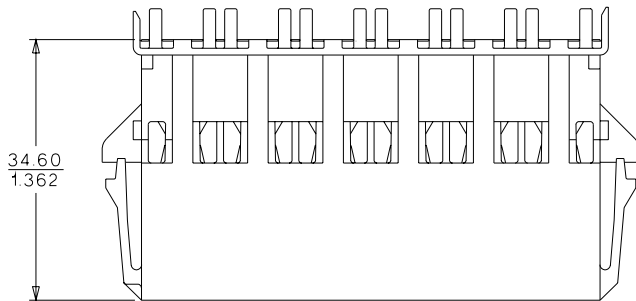
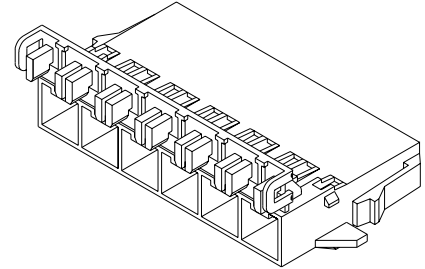
Plating: Tin/Lead over Nickel

Temperature: -40 to +105°C

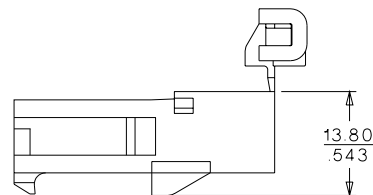
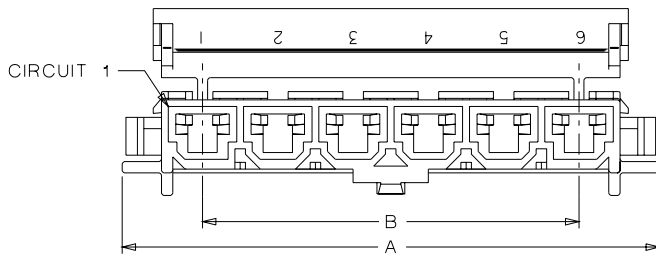
molex® 10.00mm (.393") Pitch Mini-Fit, Sr.™ Plug Housing

42818

Panel Mount Single Row



PANEL OPENING: FROM OUTSIDE THE BOX
RECOMMENDED PANEL THICKNESS: 1.80 MAX



ORDERING INFORMATION AND DIMENSIONS

Circuits	Order No.	Dimension			
		A	B	C	D
2	42818-0212	31.30 (1.232)	10.00 (.393)	27.50 (1.083)	21.70 (.854)
3	42818-0312	41.30 (1.625)	20.00 (.787)	37.50 (1.476)	31.70 (1.248)
4	42818-0412	51.30 (2.019)	30.00 (1.181)	47.50 (1.870)	41.70 (1.642)
5	42818-0512	61.30 (2.413)	40.00 (1.574)	57.50 (2.264)	51.70 (2.036)
6	42818-0612	71.30 (2.807)	50.00 (1.968)	67.50 (2.657)	61.70 (2.429)