

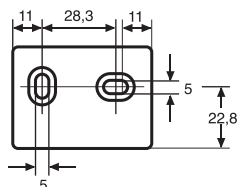
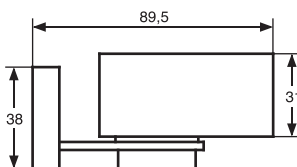
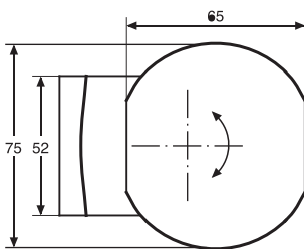


- World-wide applicable
- Reception and processing of the GPS-time signal (UTC)
- Output signal is a DCF-time-telegram which corresponds to a user-defined Time zone. The adjustments can be done by dip-switches:
  - => summertime (active/deactive)
  - => time shift relative GMT (GMT-15 to GMT+15)
- The initial state of the dip-switches results in an output signal identical to the DCF-time-signal of the FU20.00pro (summertime active / GMT+1)
- One FU 30.00 pro receiver can connect to 10 time switches
- Time and date are automatically transferred to the time switch
- Control LED
- Compact housing
- Simple mounting, wall fixed rotatable
- Connection wire specifications: 3-wire, no shield, variable core cross-section
- max. length of wire between receiver and time switches 200m



## Radio Receiver GPS-Time FU 30.00 pro for wall mounting

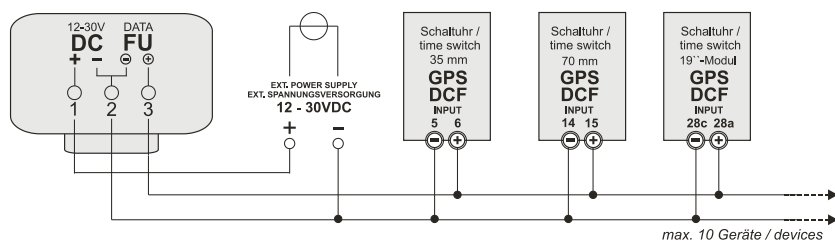
Technical data	
<b>Power Supply</b>	12 - 30VDC External power supply
<b>Power consumption</b>	30 mA at 12 V / 15 mA at 30 V
<b>Output signal</b>	DCF time telegram (no weather data) Polarity output signal LOW active <b>over Open Collector:</b> U <sub>max</sub> 50 VDC I <sub>max</sub> 80 mA Max. output power 200 mW Output voltage LOW 2,5 VDC
<b>Operation indicator</b>	flashing LED on receiving
<b>Consequence of an interference with reception</b>	time switches use their quartz as time base
<b>Antenna</b>	GPS receiver
<b>Permitted ambient temperature</b>	-30°...+55°C
<b>Housing</b>	self-extinguishing thermoplastic
<b>Mounting</b>	Fastening angle for wall mounting (receiver is rotatable)
<b>Type of protection</b>	IP 32 (DIN EN 60529)
<b>Recommended cable</b>	3-wire (Shielded / Section 0.33 up 2,5 mm <sup>2</sup> )



### Accessories

- Power adaptor Lambda [12VDC / DIN rail]
- Power adaptormüller [24VDC / 19"-housing]
- DSP 10-12
- NT 73.24 pro

### Connection diagram



Order number	Version
FU 30.00 pro	for wall mounting (receiver is rotatable)

■ Housing colour