

service unit LFR-1/4-D-MINI-KB

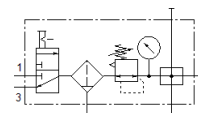
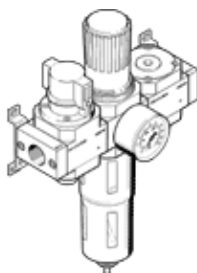
Part number: 185721
Classic

FESTO

consisting of manual on/off valve, filter regulator and distributor module, with mounting brackets.

With manual condensate drain.

Modern alternatives can be found by entering the first four characters of the type code in the search field.



Data sheet

Feature	Value
Size	Mini
Series	D
Actuator lock	Rotary knob with lock
Assembly position	Vertical +/- 5°
Grade of filtration	40 µm
Condensate drain	manual rotary
Design structure	Branching module On/off valve Filter regulator with pressure gauge
Max. condensate volume	22 cm ³
Bowl guard	Metal bowl guard
Pressure gauge	with pressure gauge
Operating pressure	1 ... 16 bar
Pressure regulation range	0.5 ... 12 bar
Max. pressure hysteresis	0.2 bar
Standard nominal flow rate	1,050 l/min
Maritime classification	see certificate
Operating medium	Compressed air in accordance with ISO8573-1:2010 [-:::] Inert gases
Corrosion resistance classification CRC	2 - Moderate corrosion stress
Air purity class at output	Compressed air in accordance with ISO8573-1:2010 [7:8:4] Inert gases
Medium temperature	-10 ... 60 °C
Ambient temperature	-10 ... 60 °C
Product weight	1,000 g
Mounting type	Optional Line installation with accessories
Pneumatic connection, port 1	G1/4
Pneumatic connection, port 2	G1/4
Material housing	Zinc die-casting
Material bowl	PC