

20 Watts

- Single and dual outputs
- Wide 4:1 input range
- 1.6" x 1" footprint
- -40°C to +100°C operation
- Full load at 65°C ambient
- 3000 VDC isolation
- Output trim $\pm 10\%$
- Remote on/off
- 3 year warranty



Dimensions:

JTD20:

1.6 x 1.0 x 0.41" (40.6 x 25.4 x 10.4 mm)

The JTD series offers a cost effective solution with many features including a metal case, short circuit protection, regulation, output trim and remote on/off.

Models & Ratings

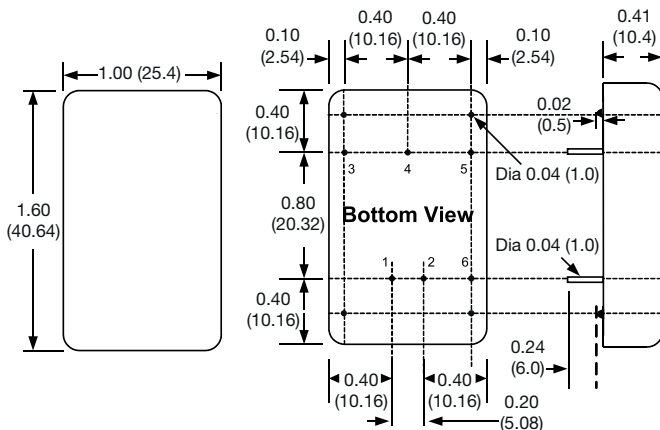
Input Voltage	Output Voltage	Output Current	Input Current ⁽¹⁾		Efficiency	Max. capacitive load ⁽²⁾	Model Number
			No Load	Full Load			
9-36V	3.3 V	5500 mA	10 mA	850 mA	89.0%	10000 μ F	JTD2024S3V3
	5 V	4000 mA	10 mA	935 mA	89.0%	6800 μ F	JTD2024S05
	12 V	1670 mA	10 mA	945 mA	88.5%	1000 μ F	JTD2024S12
	15 V	1330 mA	15 mA	945 mA	88.0%	680 μ F	JTD2024S15
	± 5 V	± 2000 mA	10 mA	970 mA	86.0%	± 2200 μ F	JTD2024D05
	± 12 V	± 835 mA	15 mA	945 mA	88.5%	± 470 μ F	JTD2024D12
	± 15 V	± 665 mA	15 mA	940 mA	88.5%	± 330 μ F	JTD2024D15
18-75V	3.3 V	5500 mA	8 mA	425 mA	89.5%	10000 μ F	JTD2048S3V3
	5 V	4000 mA	8 mA	465 mA	90.0%	6800 μ F	JTD2048S05
	12 V	1670 mA	8 mA	465 mA	90.0%	1000 μ F	JTD2048S12
	15 V	1330 mA	8 mA	455 mA	91.0%	680 μ F	JTD2048S15
	± 5 V	± 2000 mA	8 mA	480 mA	87.0%	± 2200 μ F	JTD2048D05
	± 12 V	± 835 mA	8 mA	465 mA	90.0%	± 470 μ F	JTD2048D12
	± 15 V	± 665 mA	10 mA	460 mA	90.5%	± 330 μ F	JTD2048D15

Notes

1. Input currents measured at nominal input voltage.

2. Maximum capacitive load is per output.

Mechanical Details



Pin Connections

Pin	Single	Dual
1	+Vin	+Vin
2	-Vin	-Vin
3	+Vout	+Vout
4	Trim	Common
5	-Vout	-Vout
6	Remote On/Off	Remote On/Off

Notes

1. All dimensions are in inches (mm)

2. Weight: 0.064 lbs (29.0 g) approx.

3. Pin diameter: 0.04 ± 0.002 (1.0 ± 0.05)

4. Pin pitch tolerance: ± 0.014 (± 0.35)

5. Case tolerance: ± 0.02 (± 0.5)

Input

Characteristic	Minimum	Typical	Maximum	Units	Notes & Conditions
Input Voltage Range	9		36	VDC	24 V nominal
	18		75	VDC	48 V nominal
Input Reflected Ripple Current		20		mA pk-pk	Through 12 μ H inductor and 47 μ F capacitor
Input Surge			50	VDC for 100 ms	24 V models
			100	VDC for 100 ms	48 V models

Output

Characteristic	Minimum	Typical	Maximum	Units	Notes & Conditions
Output Voltage	3.3		30	VDC	See Models and Ratings table
Output Trim	± 10			%	Single output only, see Application Note
Initial Set Accuracy			± 1	%	At full load
Minimum Load	0			%	No minimum load required
Line Regulation			± 0.5	%	From minimum to maximum input at full load
Load Regulation			0.5/1.0	%	From 0% to full load for single/dual output
Cross Regulation			± 5	%	On dual output models, when one output is at 100% load and other is varied from 25% load to full load
Start Up Time		30		ms	
Ripple & Noise			75/60	mV pk-pk	Single/Dual Output, Measured using 20 MHz bandwidth and 10 μ F/25 V MLCC per output
Overload Protection			170	%	
Short Circuit Protection					Continuous hiccup mode, with auto recovery
Maximum Capacitive Load					See Models and Ratings table
Temperature Coefficient			0.02	%/°C	
Overvoltage Protection			140	%	
Remote On/Off	Output is on if remote on/off (pin 3) is open or high (3-12 VDC) Output turns off if remote on/off (pin 3) is low (<1.2 VDC max), e.g. short pin 6 to pin 2 -Vin.				Idle input current 2mA typical

General

Characteristic	Minimum	Typical	Maximum	Units	Notes & Conditions
Efficiency		85		%	See Models and Ratings table
Isolation: Input to Output	3000			VDC	60 s Functional
Isolation: Input and output to Case	1600			VDC	60 s
Switching Frequency		270/330		kHz	3V3 & 5 V models/other models
Isolation Resistance	10^9			Ω	
Isolation Capacitance		2000		pF	
Power Density			30	W/in ³	
Mean Time Between Failure	400			kHrs	MIL-HDBK-217F, +25 °C GB
Case Material	Case Material, Base plastic UL94V-0				
PCB Pin Material	Brass, Solder coated				
Potting Material	Epoxy, UL84V-0 rated				
Solder Profile	260 °C max, 1.5mm from case, 10s max				
Weight		0.064 (29.0)		lb (g)	

Environmental

Characteristic	Minimum	Typical	Maximum	Units	Notes & Conditions
Operating Temperature	-40		+100	°C	See Derating Curve
Storage Temperature	-55		+125	°C	
Case Temperature			+105	°C	
Humidity			95	%RH	Non-condensing
Cooling					Natural convection
Thermal Impedance to Air	12			°C/W	

Safety Approvals

Safety Agency	Safety Standard	Notes & Conditions
UL/cUL	UL/cUL60950-1, 62368-1	ITE
CE	Meets all applicable directives	
UL	Meets all applicable legislation	

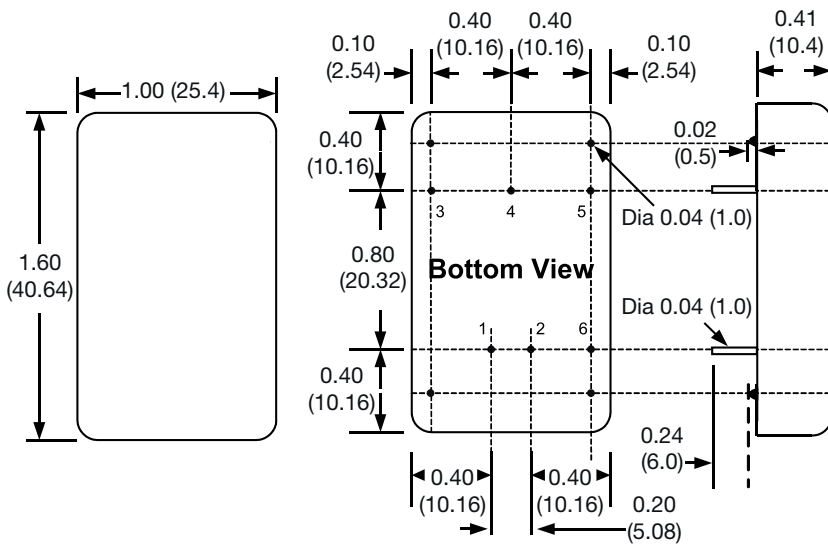
EMC: Emissions

Phenomenon	Standard	Test Level	Notes & Conditions
Conducted	EN55032	Class A	No external components required
Radiated	EN55032	Class A	No external components required

EMC: Immunity

Phenomenon	Standard	Test Level	Criteria	Notes & Conditions
ESD Immunity	EN61000-4-2	±6 kV/±8 kV	B	Contact Discharge/Air Discharge
Radiated Immunity	EN61000-4-3	20 Vrms	A	
EFT/Burst	EN61000-4-4	2 kV	A	Requires 330 µF/100 V electrolytic and 3 kW TVS (SMDJ58A for 24 V input, SMDJ120A for 48 V input) See application notes.
Surge	EN61000-4-5	2 kV	A	Required 330 µF/100 V electrolytic and 3 kW TVS (SMDJ58A for 24 V input, SMDJ120A for 48 V input) See application notes.
Conducted Immunity	EN61000-4-6	10 V rms	A	
Magnetic Fields	EN61000-4-8	100 A/m	A	

Mechanical Details

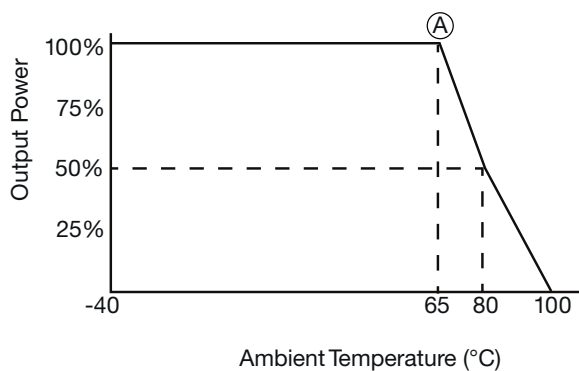


Pin Connections		
Pin	Single	Dual
1	+Vin	+Vin
2	-Vin	-Vin
3	+Vout	+Vout
4	Trim	Common
5	-Vout	-Vout
6	Remote On/Off	Remote On/Off

Notes

- All dimensions are in inches (mm)
- Weight: 0.042 lbs (19.0 g) approx.
- Pin diameter: 0.04±0.002 (1.0 ±0.05)
- Pin pitch tolerance: ±0.014 (±0.35)
- Case tolerance: ±0.02 (±0.5)

Derating Curve

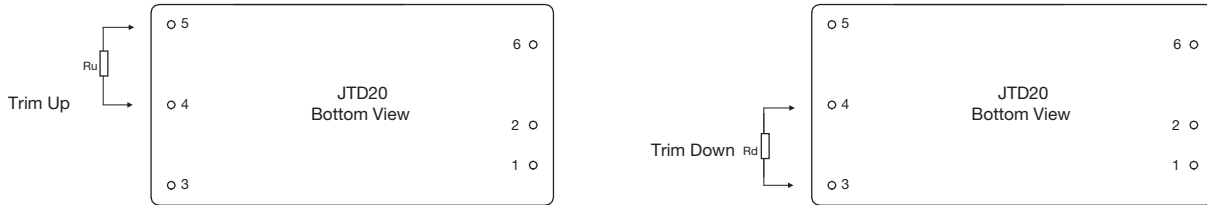


Note: Point (A) is 60 °C for dual 5 V output models

Application Notes

External Output Trimming

Output can be externally trimmed by using the method as below, (single output models only)



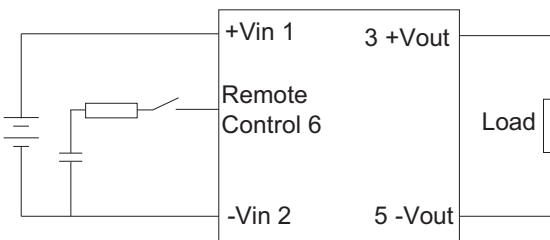
Trim Down Resistor Values (Rd)

Models	1%	2%	3%	4%	5%	6%	7%	8%	9%	10%
3V3	309.0 k	165.4 k	105.6 k	72.9 k	52.3 k	38.0 k	27.6 k	19.7 k	13.5 k	8.40 k
5V	119.9 k	77.70 k	50.50 k	35.2 k	25.3 k	18.4 k	13.4 k	9.50 k	6.40 k	3.90 k
12V	345.0 k	138.1 k	79.90 k	51.5 k	34.6 k	23.4 k	15.5 k	9.50 k	4.90 k	1.26 k
15V	174.4 k	91.10 k	56.60 k	37.7 k	25.8 k	17.6 k	11.6 k	7.00 k	3.50 k	0.55 k

Trim Up Resistor Values (Ru)

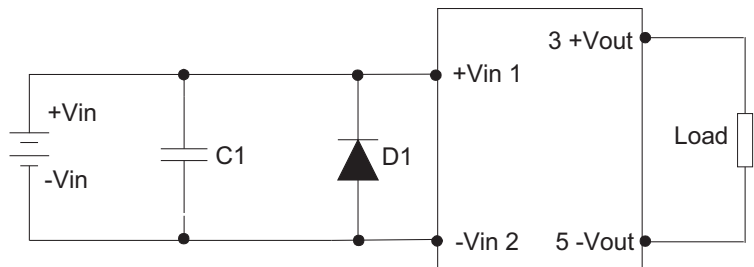
Models	1%	2%	3%	4%	5%	6%	7%	8%	9%	10%
3V3	537.7 k	177.1 k	96.40 k	60.8 k	40.8 k	27.9 k	19.0 k	12.4 k	7.30 k	3.40 k
5V	635.2 k	170.0 k	92.80 k	61.1 k	43.8 k	32.9 k	25.4 k	20.0 k	15.8 k	12.5 k
12V	367.4 k	179.6 k	113.6 k	79.9 k	59.5 k	45.8 k	35.9 k	28.5 k	22.7 k	18.1 k
15V	661.5 k	231.3 k	134.0 k	91.0 k	66.8 k	51.3 k	40.4 k	32.5 k	26.4 k	21.5 k

Remote On/Off



The module is enabled by positive logic. Adding a switch function between the remote control pin 6 and -Vin pin 2 will facilitate this (open drain or open collector type)

EFT Surge Filter



Models	C1	D1
JTD2024	330 μ F, 100 V	TVS, 58V, 3kW
JTD2048	330 μ F, 100 V	TVS, 120V, 3kW