

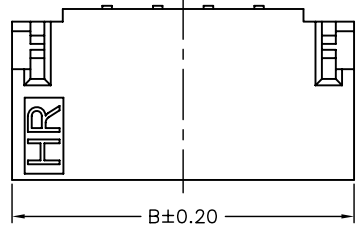


P/N LEGEND

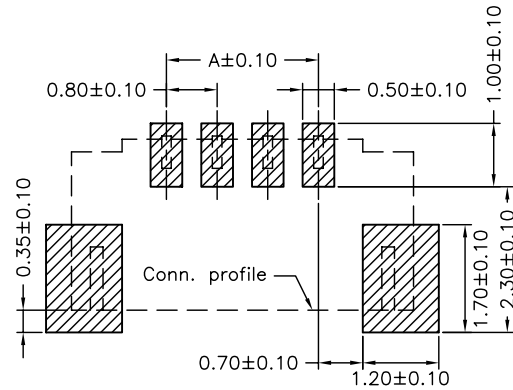
- A0800 WR-S-XP N X X XX X 00 R
- ① Series No.  
 ② Connector type: WR=Right angle  
 ③ Mounting type: S=SMT without boss  
 ④ No. of circuits  
 ⑤ N=Halogen Free  
 ⑥ Material: 6=Nylon 6T; L=LCP,V0  
 ⑦ Color: B=Natural(Black); N=Natural(Beige)  
 ⑧ Plating code for contacts:  
 T1=Matte Tin-plated; G1=Gold-flash  
 ⑨ Plating code for solder tabs:  
 T=Matte Tin-plated; G=Gold-flash  
 ⑩ Option code: 00=Standard  
 ⑪ Packing code: R=Tape & Reel

SPECIFICATIONS

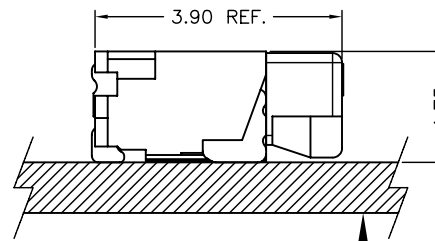
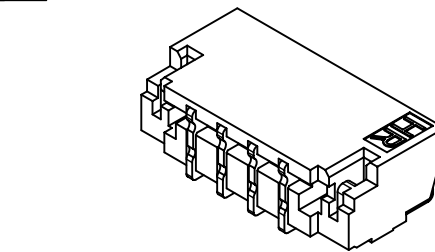
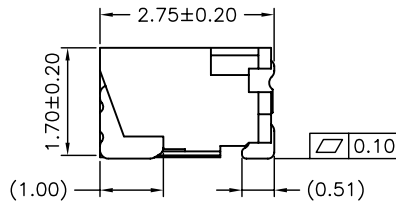
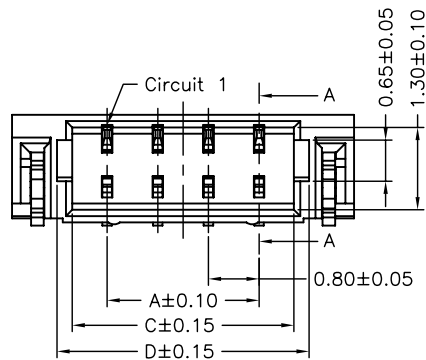
Current Rating: 0.5A AC,DC  
 Voltage Rating: 30V AC,DC  
 Temperature Range: -25°C ~ +85°C  
 Contact Resistance: 20mΩ Max.  
 Insulation Resistance: 100MΩ Min.  
 Withstanding Voltage: 200V AC/minute  
 Pin Material: Phosphor Bronze  
 Solder Tabs: Phosphor Bronze



(TOP VIEW)

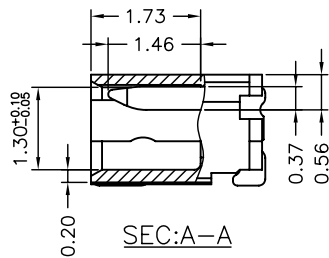
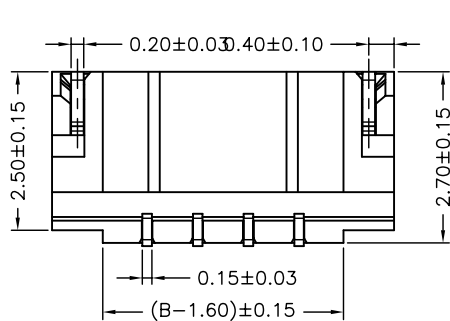


P.C.B. LAYOUT  
(TOP VIEW)



MATED CONDITION

| Circuit No. | Dimensions |       |       |       |
|-------------|------------|-------|-------|-------|
|             | A          | B     | C     | D     |
| 02P         | 0.80       | 3.80  | 1.90  | 2.38  |
| 03P         | 1.60       | 4.60  | 2.70  | 3.18  |
| 04P         | 2.40       | 5.40  | 3.50  | 3.98  |
| 05P         | 3.20       | 6.20  | 4.30  | 4.78  |
| 06P         | 4.00       | 7.00  | 5.10  | 5.58  |
| 07P         | 4.80       | 7.80  | 5.90  | 6.38  |
| 08P         | 5.60       | 8.60  | 6.70  | 7.18  |
| 09P         | 6.40       | 9.40  | 7.50  | 7.98  |
| 10P         | 7.20       | 10.20 | 8.30  | 8.78  |
| 12P         | 8.80       | 11.80 | 9.90  | 10.38 |
| 14P         | 10.40      | 13.40 | 11.50 | 11.98 |
| 15P         | 11.20      | 14.20 | 12.30 | 12.78 |
| 16P         | 12.00      | 15.00 | 13.10 | 13.58 |
| 17P         | 12.80      | 15.80 | 13.90 | 14.38 |
| 18P         | 13.60      | 16.60 | 14.70 | 15.18 |
| 20P         | 15.20      | 18.20 | 16.30 | 16.78 |



SEC:A-A

|          |             |             |        |   |        |
|----------|-------------|-------------|--------|---|--------|
|          |             |             |        | 燦達電子工業股份有限公司<br>JOINT TECH ELECTRONIC IND. CO., LTD.                            |        |
| UNIT     |             | SCALE       | SHEET  |   | TITLE: |
| mm       |             | 1 : 1       | 1 of 2 |   |        |
| DRAWN BY |             | APPROVED BY |        | 0.80mm PITCH<br>90° WAFER-SMT TYPE<br><br>DRAW NO.: A0800WR-S-XPXXXXXXX REV. A4 |        |
| A4       |             | A3          |        |   |        |
| A3       |             | A2          |        |   |        |
| A2       |             | A1          |        |   |        |
| A1       |             | A0          |        |   |        |
| REV.     | DESCRIPTION | DATE        | NAME   | GENERAL TOLERANCE   |        |
|          |             |             |        | X. X±0.25   |        |
|          |             |             |        | X. XX±0.15  |        |
|          |             |             |        | X. XXX±0.05   |        |