

Right Angle SMA Male Plug to SMA Female Jack

Model Number

ADT-8000-MF-SMA-02

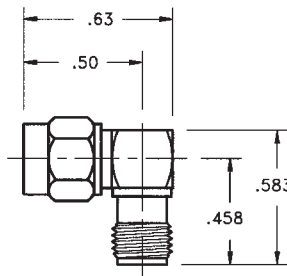
SPECIFICATIONS

Frequency: DC - 18.0 GHz

VSWR: 1.05 + .010 f (GHz)

Impedance: 50 Ohms

Finish: Passivated Stainless Steel



Formerly SMA-028-8000 and SMA-8000-28-000-02

Right Angle SMA Female Jack to SMA Female Jack

Model Number

ADT-8000-FF-SMA-02

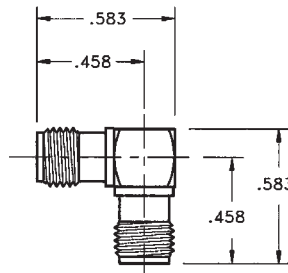
SPECIFICATIONS

Frequency: DC - 18.0 GHz

VSWR: 1.05 + .010 f (GHz)

Impedance: 50 Ohms

Finish: Passivated Stainless Steel



Formerly SMA-026-8000 and SMA-8000-26-000-02

Right Angle SMA Male Plug to SMA Male Plug

Model Number

ADT-8000-MM-SMA-02

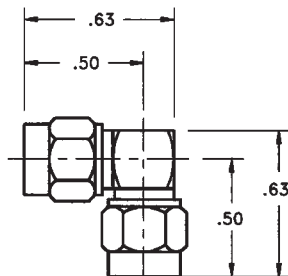
SPECIFICATIONS

Frequency: DC - 18.0 GHz

VSWR: 1.05 + .010 f (GHz)

Impedance: 50 Ohms

Finish: Passivated Stainless Steel



SMA Female Jack to SMA Female Jack - Bkhd Mount - Hermetic

Model Number

ADT-2824-FF-SMA-02

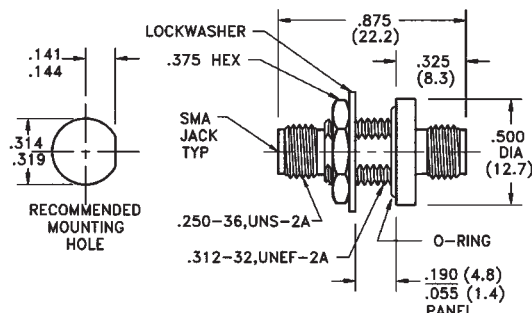
SPECIFICATIONS

Frequency: DC - 18.0 GHz

VSWR: 1.10 + .010 f (GHz)

Impedance: 50 Ohms

Finish: Passivated Stainless Steel



Standard finish is passivated stainless steel, for gold plating change -02 suffix to -00.

Mouser Electronics

Authorized Distributor

Click to View Pricing, Inventory, Delivery & Lifecycle Information:

[Cinch Connectivity Solutions:](#)

[ADT-8000-MF-SMA-02](#)