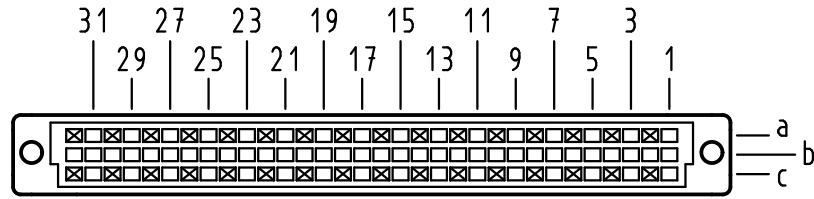


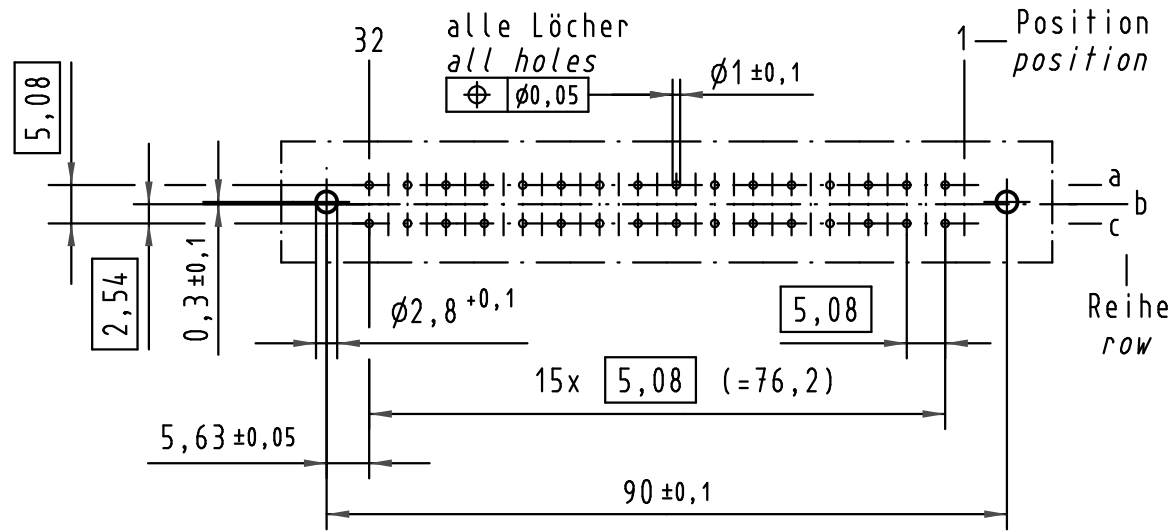
X
Kontaktanordnung
contact arrangement



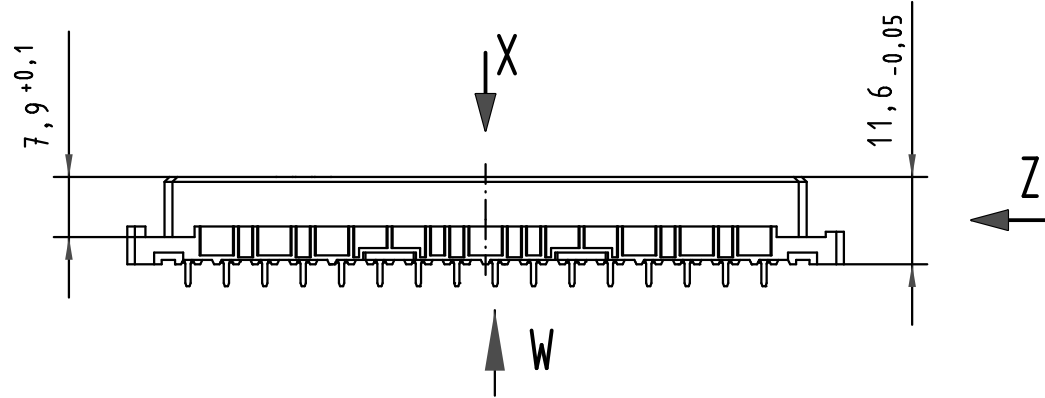
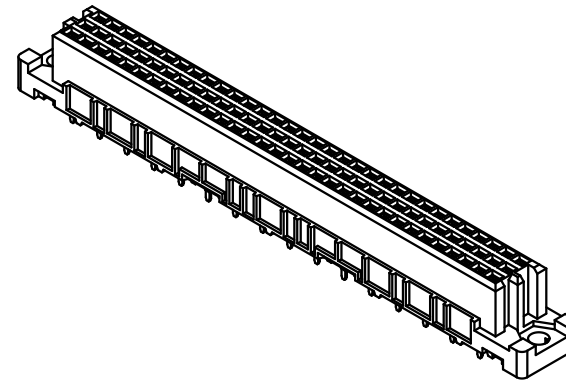
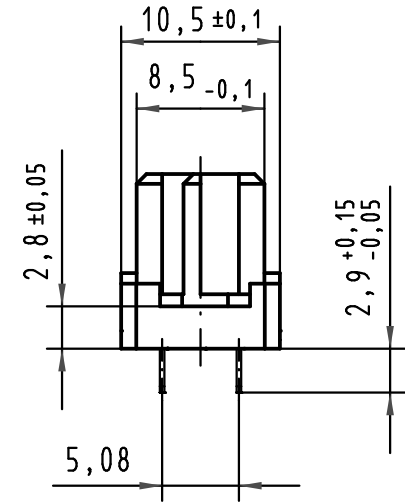
32 Einlöt Kontakte
32 solder contacts

- ☒ = Einlöt Kontakt
= solder contact
- = gekrümmter Einlöt Kontakt
= kinked solder contact
- = Kontaktposition nicht belegt
= position without contact

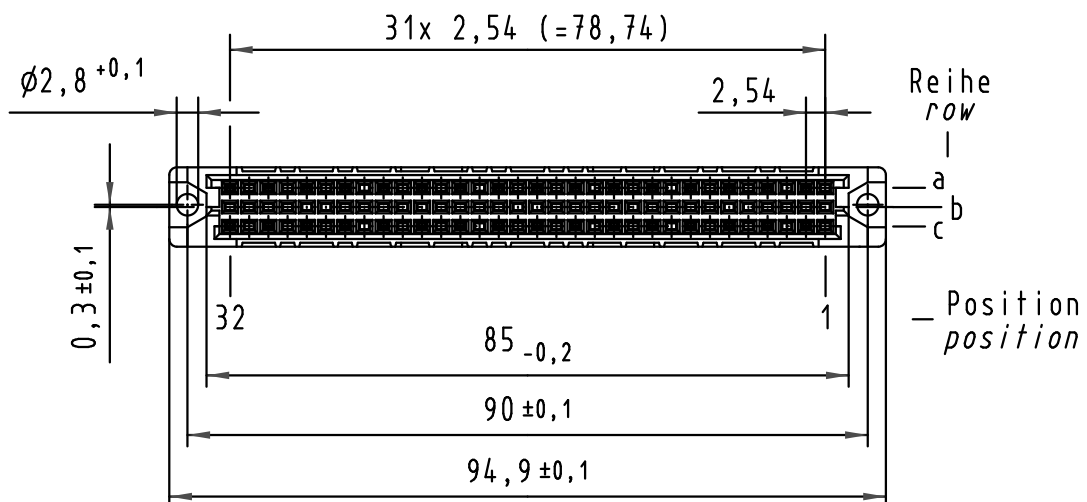
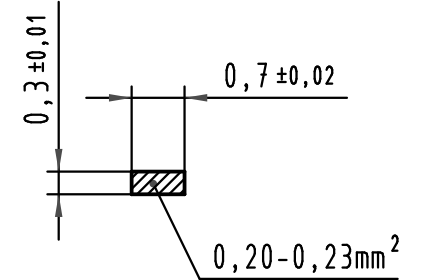
X
(Lochbild)
(board drillings)



Z
2:1



W
10:1
Querschnitt der
Lötanschlüsse:
cross-section of
solder terminations:



09 03 232 7824	3	Au über/over Ni
09 03 232 6824	2	Au über/over Ni
09 03 232 2824	1	Au über/over Ni
Bestell-Nr. part-no.	Anforderungsstufe nach IEC performance level acc.to IEC	Kontaktoberfläche contact plating

All Dimensions in mm Original Size DIN A 3			Techn. Character.			Nicht tolerierte Maß/Free size tolerances IEC 60603-2		
						har-bus C Federleiste Einlöt 2,9 , 32 pol. har-bus C female connector solder 2,9 , 32 pol.		
34650	13.08.07	Cla	Detail.	01.09.99	Rie.	Maßstab/Scale 1:1 2:1 10:1	TB 09 03 232 x824	
34158	17.01.07	LehT	Insp.	01.09.99	Pa.			
30814	15.02.02	Rie.	Stand.					
26919	12.11.99	Rie.	HARTING Electronics GmbH & Co. KG			HARTING	Sub.	
26082			D-32339 ESPELKAMP					
Mod.	Dat.	Name						Blatt/page