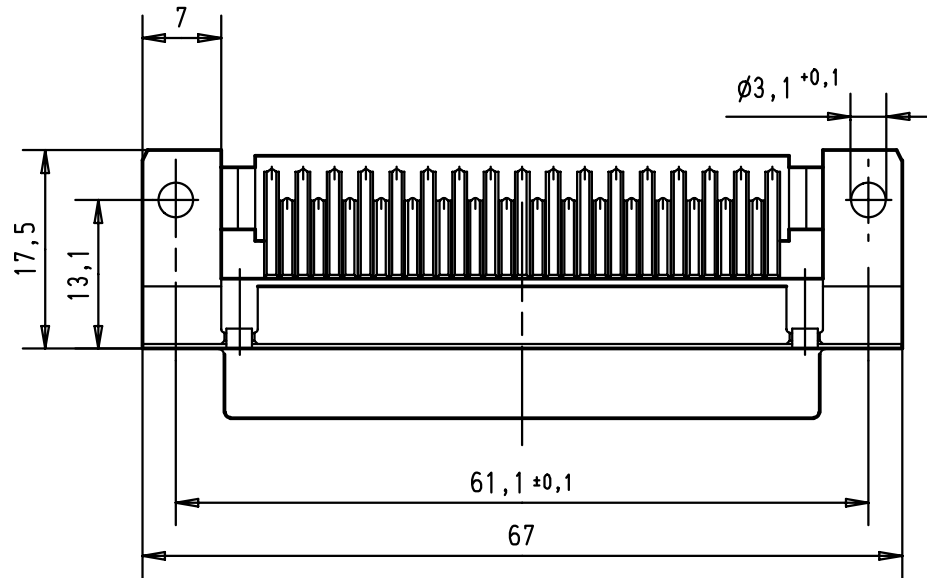
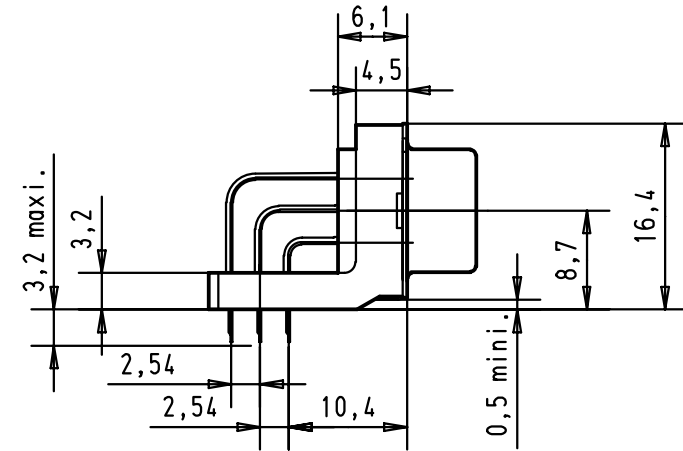
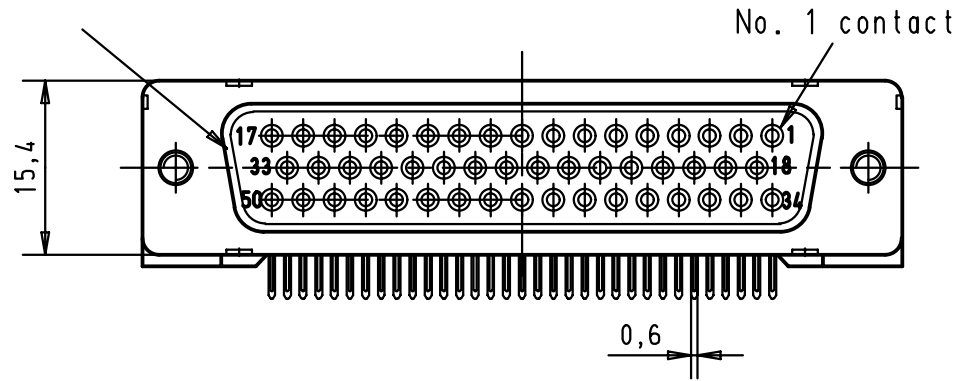


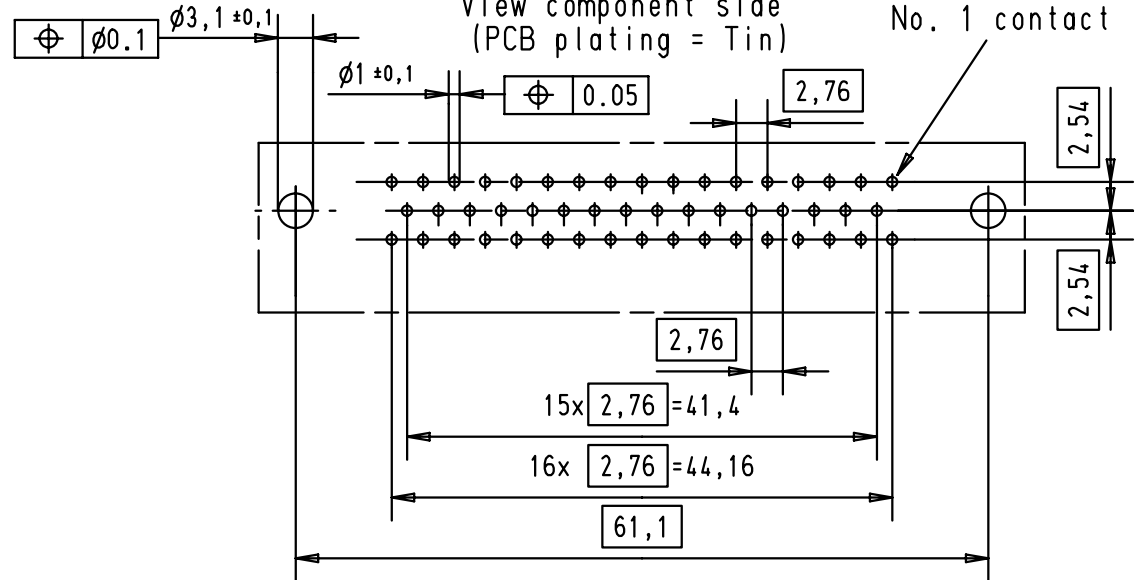
5 4 3 2 1

Mating face according to MIL-C-24308 / DIN 41 652 / CECC 75301-802



Printed board layout (1,6±0,2 thick)

View component side
(PCB plating = Tin)



A

| | | | | | | | | | | | |
|----------------|------------|-------------------|-------|-----------|------|-------------------------------|-----------|----|--|---|----------------------------|
| 09 66 512 6601 | M3 | 2 | | | | | | | <p>All Dim. in mm Orig. Size DIN A 4</p> | D-Sub female angled 50 poles with solder pins and nuts | Maßstab/ Scale 1,5:1 |
| 09 66 512 7601 | M3 | 3 | | | | Detail. | 23-NOV-01 | JB | | | |
| 09 66 512 5601 | M3 | 0,76 µm Au | | | | Insp. | | | | | |
| 09 66 512 6602 | 4-40 UNC | 2 | | | | Stand. | | | | | |
| 09 66 512 7602 | 4-40 UNC | 3 | | | | HARTING EURL F-95972 Paris | | | | TB 09 66 512 X60X | Blatt/ Page 1 |
| 09 66 512 5602 | 4-40 UNC | 0,76 µm Au | 29733 | 23-NOV-01 | JB | Sub. | | | | | |
| Part number | nut thread | Performance level | Mod. | Dat. | Name | | | | | | |