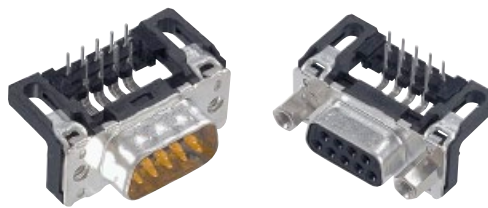
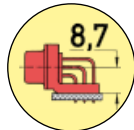
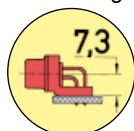


Number of contacts

Mounting height

Standard Versions

9-37  
50



Stamped solder pins, angled without grounding board locks

Identification	No. of contacts	Part No.	
<b>Performance levels</b> Explanations see page 05.04 Other performance levels on request		<b>Performance level 3</b>	
		<b>Performance level 2</b>	
<b>Male connector</b> metal shell with dimples		2.84 mm pitch	
	9	09 65 123 780 . 1)	09 65 123 680 . 1)
	15	09 65 223 780 . 1)	09 65 223 680 . 1)
	25	09 65 323 780 . 1)	09 65 323 680 . 1)
	37	09 65 423 780 . 1)	09 65 423 680 . 1)
		2.54 mm pitch	
	9	09 65 122 780 .	09 65 122 680 .
	15	09 65 222 780 .	09 65 222 680 .
	25	09 65 322 780 .	09 65 322 680 .
	37	09 65 422 780 .	09 65 422 680 .
<b>Female connector</b> metal shell		2.84 mm pitch	
	9	09 66 113 760 . 1)	09 66 113 660 . 1)
	15	09 66 213 760 . 1)	09 66 213 660 . 1)
	25	09 66 313 760 . 1)	09 66 313 660 . 1)
	37	09 66 413 760 . 1)	09 66 413 660 . 1)
		2.54 mm pitch	
	9	09 66 112 760 .	09 66 112 660 .
	15	09 66 212 760 .	09 66 212 660 .
	25	09 66 312 760 .	09 66 312 660 .
	37	09 66 412 760 .	09 66 412 660 .
	50	09 66 512 760 . 1)	09 66 512 660 . 1)
Please insert digit for flange thread or fitted female screw locks			
Ø 3.1 mm hole ▶ 0 <sup>1)</sup>			
M3 ▶ 1			
4-40 UNC ▶ 2			
fitted screw locks 4-40 UNC ▶ 3			

D-Sub

<sup>1)</sup> Not normally kept in stock