

PIN RECEPTACLES

FOR .037" - .043" DIAMETER PINS

0331/9353

X3XX-0-15-XX-18-XX-10-0

Solder mount in .071 min. mounting hole
Also available on 24mm wide carrier tape:
1,000 parts per 13" reel
Order as: X3XX-0-57-XX-18-XX-10-0



Basic Part Number	Length L	Depth N
0331-0	.150	.127
9353-0	.170	.147

7405

7405-0-18-XX-18-XX-10-0

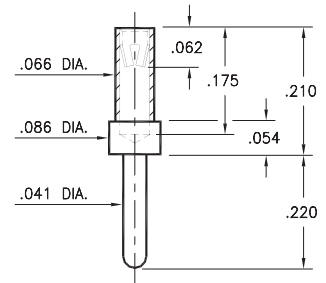
Press-fit in .084 mounting hole
Accepts wire sizes up to .025" dia.



3450

3450-0-15-XX-18-XX-04-0

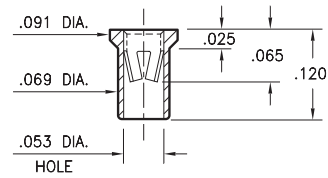
Solder mount in .043 min. mounting hole



7406

7406-0-15-XX-18-XX-10-0

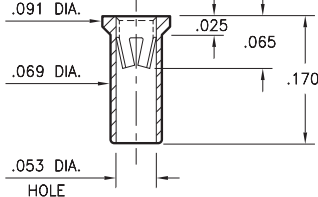
Solder mount in .071 min. mounting hole
Also available on 16mm wide carrier tape:
2,200 parts per 13" reel
Order as: 7406-0-57-XX-18-XX-10-0



9354

9354-0-15-XX-18-XX-10-0

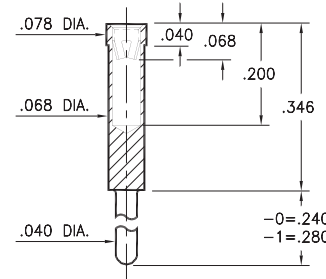
Solder mount in .071 min. mounting hole
Also available on 12mm wide carrier tape:
1,400 parts per 13" reel
Order as: 9354-0-57-XX-18-XX-10-0



0319

0319-X-15-XX-18-XX-04-0

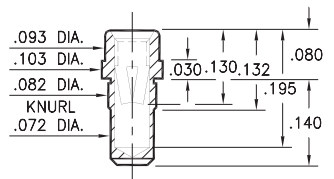
Solder mount in .042 min. mounting hole



9357

9357-0-15-XX-18-XX-10-0

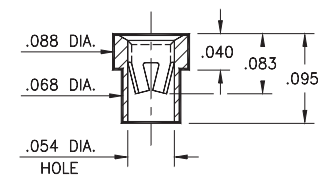
Press-fit in .078 mounting hole



3520

3520-0-15-XX-18-XX-10-0

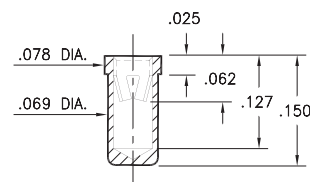
Solder mount in .070 min. mounting hole



8331

8331-0-15-XX-18-XX-10-0

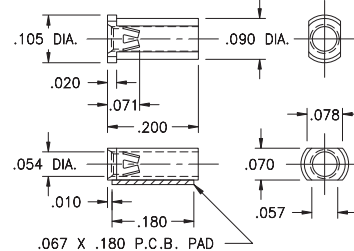
Solder mount in .071 min. mounting hole
Also available on 16mm wide carrier tape:
1,900 parts per 13" reel
Order as: 8331-0-57-XX-18-XX-10-0



6628

6628-0-18-XX-18-XX-10-0

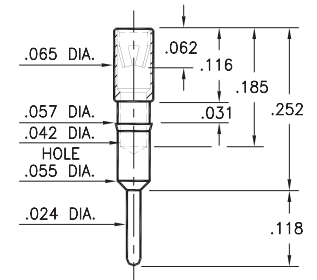
Surface mount
Also available on 12mm wide carrier tape:
3,700 parts per 13" reel
Order as: 6628-0-58-XX-18-XX-10-0



1313

1313-0-15-XX-18-XX-04-0

Press-fit in .056 mounting hole



SPECIFICATIONS:

Shell Material: Brass Alloy 360, 1/2 Hard

Contact Material: Beryllium Copper Alloy 172, HT

Dimensions: Inches

Tolerances On: Lengths: ±.005

Diameters: ±.002

Angles: ±2°



ORDER CODE: XXXX - X - XX - XX - 18 - XX - XX - 0

BASIC PART #

SPECIFY SHELL FINISH:

- 01 200 μ" TIN/LEAD OVER NICKEL
- ◆ 80 200 μ" TIN OVER NICKEL (RoHS)
- ◆ 15 10 μ" GOLD OVER NICKEL (RoHS)

SPECIFY CONTACT FINISH:

- 01 200 μ" TIN/LEAD OVER NICKEL
- ◆ 80 200 μ" TIN OVER NICKEL (RoHS)
- ◆ 27 30 μ" GOLD OVER NICKEL (RoHS)

SELECT CONTACT:

#18 CONTACT (DATA ON PAGE 257)

(For alternate contact choices, see group L on page 248)



Mill-Max Mfg. Corp. • 190 Pine Hollow Road, P.O. Box 300, Oyster Bay, NY 11771 • 516-922-6000 • Fax: 516-922-9253 • www.mill-max.com