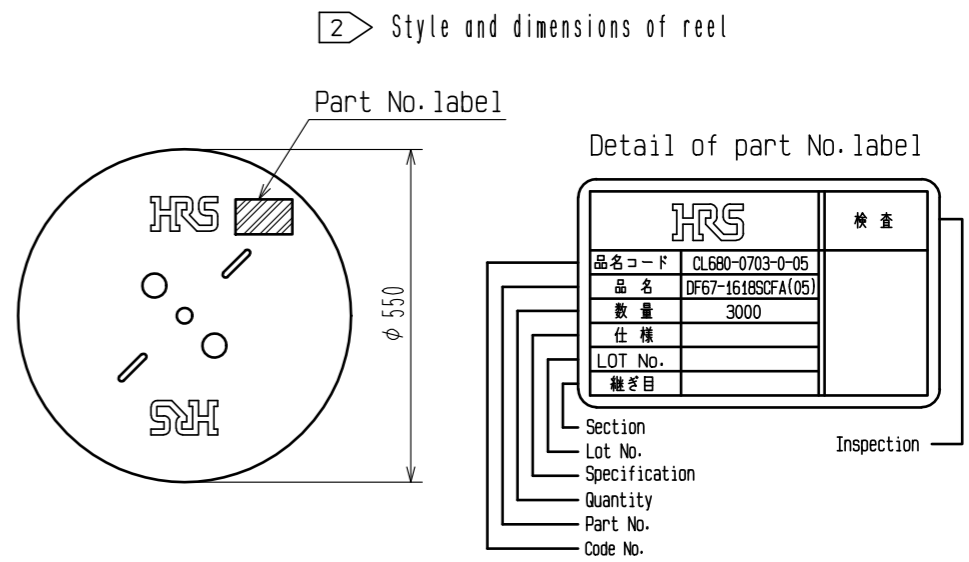
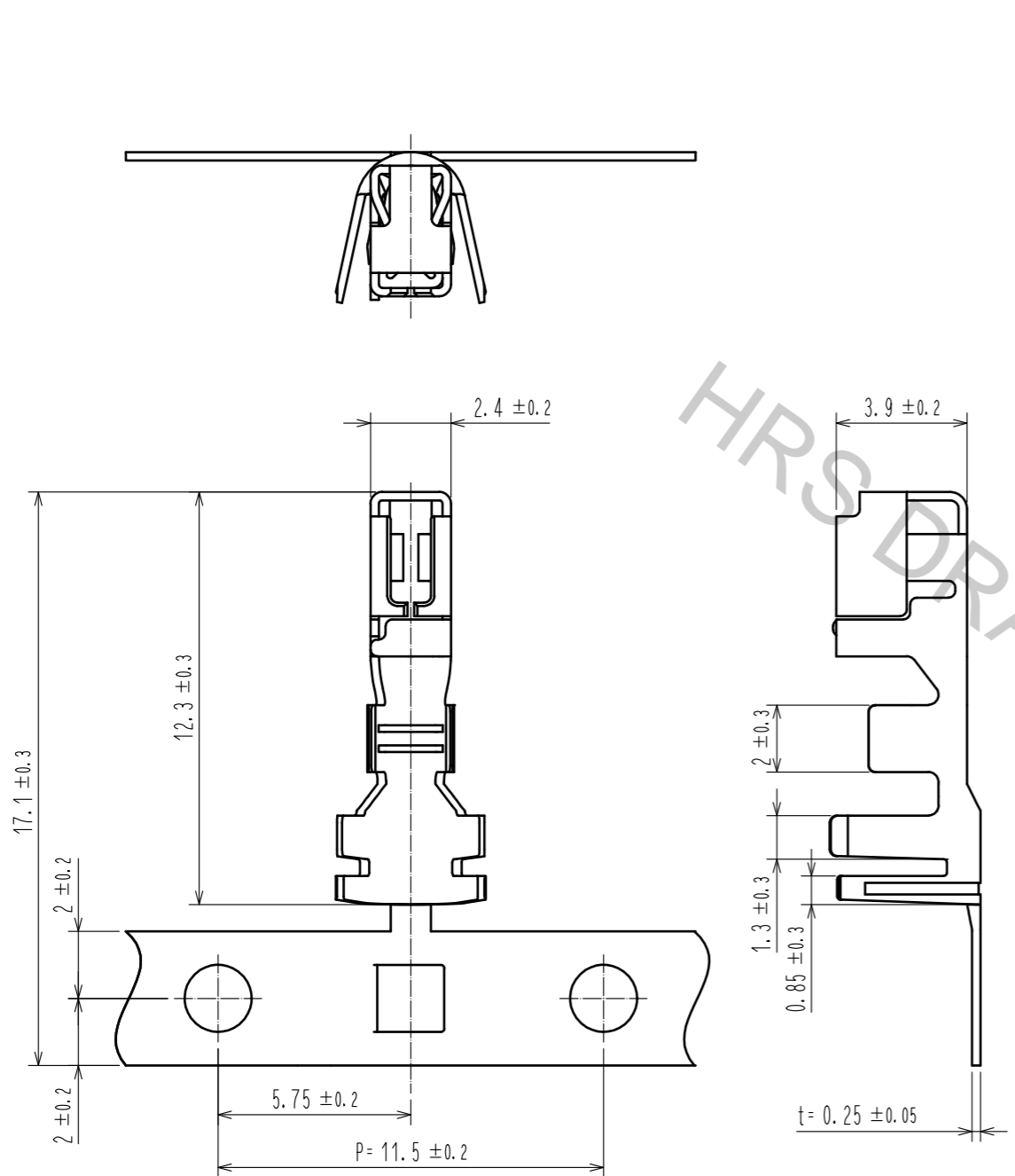


Oct.1.2018 Copyright 2018 HIROSE ELECTRIC CO., LTD. All Rights Reserved.
 In case that the application demands a high level of reliability, such as automotive,
 please contact a company representative for further information.



Note. 1. 3,050 contacts per reel.
 2. Style of reel are shown in figure.
 3. Please be to check the from of crimping using a cable, when you adjust applicator.

NO.		MATERIAL		FINISH . REMARKS		NO.		MATERIAL		FINISH . REMARKS	
		1		Copper alloy				Contact area : Gold plating 0.76 μm MIN Carrier area : Tin plating 1 μm MIN Under plating : Nickel plating 1.27 μm MIN			
UNITS mm		SCALE 5 : 1		COUNT	DESCRIPTION OF REVISIONS			DESIGNED	CHECKED	DATE	
HRS HIROSE ELECTRIC CO., LTD.		APPROVED : YN. TAKASHITA	15.11.16	DRAWING NO. EDC-367036-05-00							
		CHECKED : YN. TAKASHITA	15.11.16	PART NO. DF67-1618SCFA(05)							
		DESIGNED : ST. SATO	15.11.16	CODE NO. CL680-0703-0-05							
		DRAWN : ST. SATO	15.11.16								