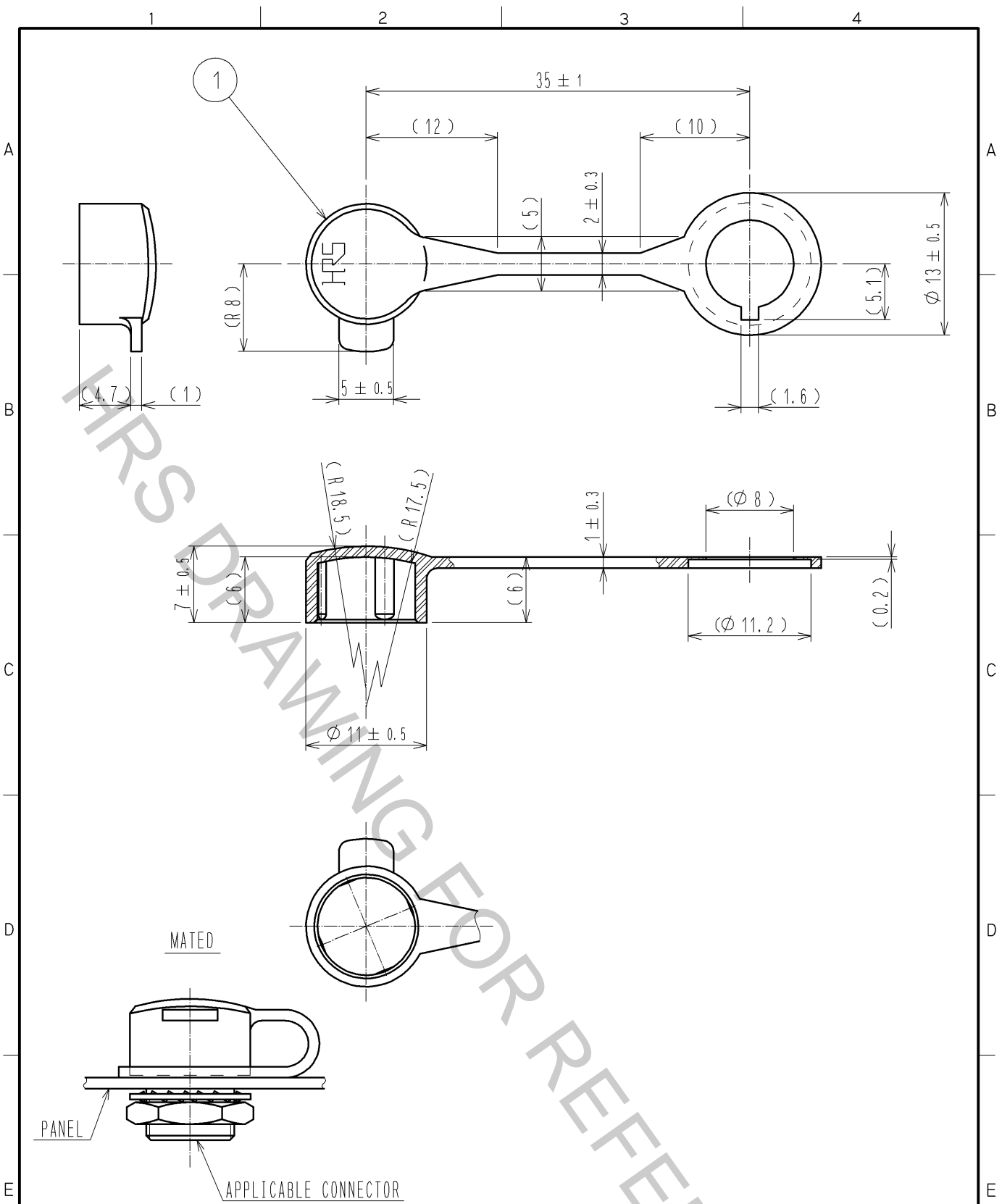


Sep.1.2018 Copyright 2018 HIROSE ELECTRIC CO., LTD. All Rights Reserved.
 In case that the application demands a high level of reliability, such as automotive,
 please contact a company representative for further information.



⚠ NOTES 1. THIS PRODUCT IS A CAP FOR HR10※-7R-※(※), HR10※-7J-※(※).
 IT IS APPLICABLE REGARDLESS OF GIVEN ALPHABETS OR NUMBERS SHOWN AT ※.

1	POLYPROPYLENE	(BLACK) UL94V-0						
NO.	MATERIAL	FINISH .	REMARKS	NO.	MATERIAL	FINISH .	REMARKS	
UNITS mm		SCALE 2 : 1	COUNT 1	DESCRIPTION OF REVISIONS DIS-C-002996		DESIGNED HK. NAMAI	CHECKED HY. KISHI	DATE 13. 04. 10
HIROSE ELECTRIC CO., LTD.		APPROVED : MO. SATOH	06. 08. 02	DRAWING NO.		EDC4-021623-00		
		CHECKED : EJ. KUNII	06. 08. 02	PART NO.		HR10-7R-C		
		DESIGNED : TP. KOMATSU	06. 08. 02	CODE NO.		CL110-0058-6-00		
		DRAWN : TP. KOMATSU	06. 08. 02					