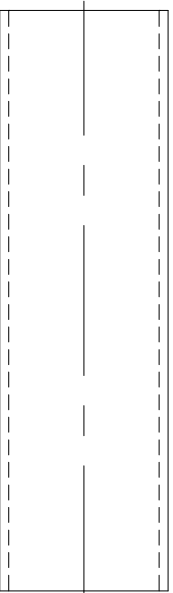
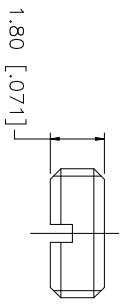
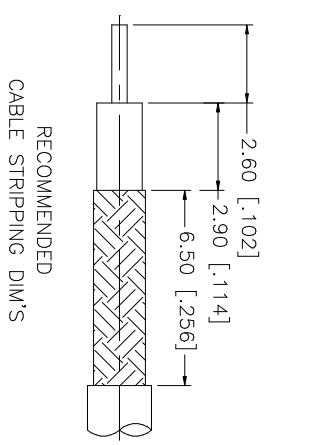
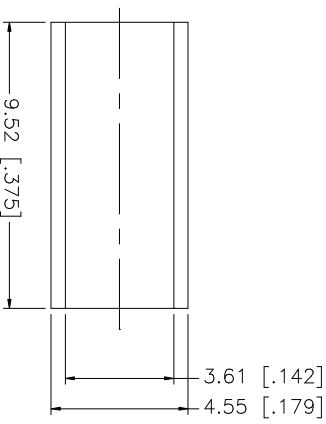
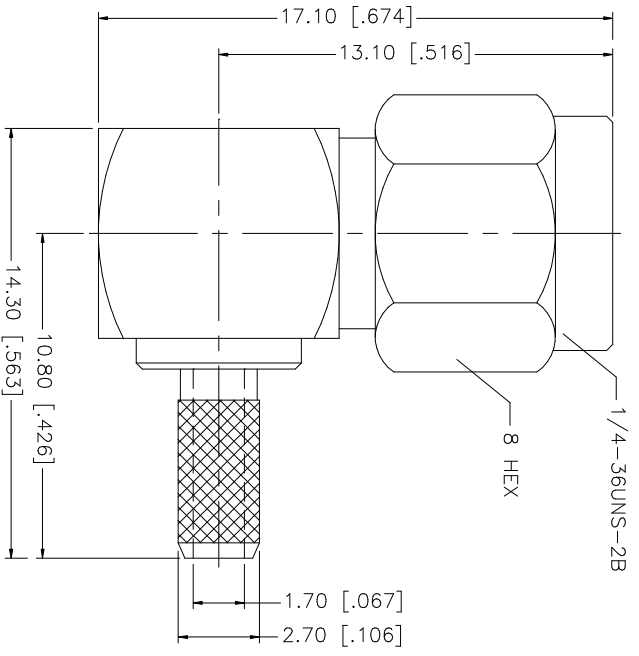


REV.	DATE	DESCRIPTION
C	02/18/03	UPDATE DRAWING FORMAT
D	07/31/05	ADD "DOUBLE BRAID CABLE" TO DESCRIPTION



- NOTE:
1. CRIMPED FERRULE
HEX CRIMP SIZE ".151"
 2. CONTACT PIN TO SOLDER

QTY	DESCRIPTION	MATERIAL	FINISH	FINISH	QTY	DO NOT SCALE DRAWING	APPROVALS	DATE	PART DESCRIPTION
1	HEAT SHRINK TUBE	BLACK	BLACK						Amphenol Connex SMA R/A CRIMP PLUG (FOR RG-316/U DOUBLE BRAID CABLE) 132182
1	FERRULE	COPPER	GOLD						
1	COVER	BRASS	GOLD						
1	GASKET	SILICONE	RED						
1	RETAINER RING	BER. COPPER	NATURAL						
1	CONTACT PIN	BRASS	GOLD						
1	INSULATOR	TEFLON	NATURAL						
1	HOUSING/BODY	BRASS	GOLD						
	DESCRIPTION	MATERIAL	FINISH	FINISH	QTY	DO NOT SCALE DRAWING			

QTY	DESCRIPTION	MATERIAL	FINISH	FINISH	QTY	DO NOT SCALE DRAWING
1	HEAT SHRINK TUBE	BLACK	BLACK			
1	FERRULE	COPPER	GOLD			
1	COVER	BRASS	GOLD			
1	GASKET	SILICONE	RED			
1	RETAINER RING	BER. COPPER	NATURAL			
1	CONTACT PIN	BRASS	GOLD			
1	INSULATOR	TEFLON	NATURAL			
1	HOUSING/BODY	BRASS	GOLD			

UNLESS OTHERWISE SPECIFIED DIMENSIONS ARE IN MILLIMETERS. DIMENSIONS IN [] ARE IN INCHES AND FOR CUSTOMER REFERENCE ONLY.	UNLESS OTHERWISE SPECIFIED DIMENSIONS ARE IN MILLIMETERS. DIMENSIONS IN [] ARE IN INCHES AND FOR CUSTOMER REFERENCE ONLY.
TOLERANCES FOR MILLIMETERS ARE:	TOLERANCES FOR INCHES ARE:
0.5 - 8mm ± 0.20mm	0.5 - .120mm ± 0.015"
8 - 30mm ± 0.40mm	.120 - .315 ± 0.007"
30 - 120mm ± 0.50mm	.315 - 1.180 ± 0.015"
	1.180 - 4.724 ± 0.020"

CAD FILE	APPROVALS	DATE	DWG. NO.	REV.	SIZE	SCALE
C:/132/132182.DWG	G.R.S.	07/31/05	132182.DWG	D	A	NA