



(<https://www.dfrobot.com/product-682.html>)

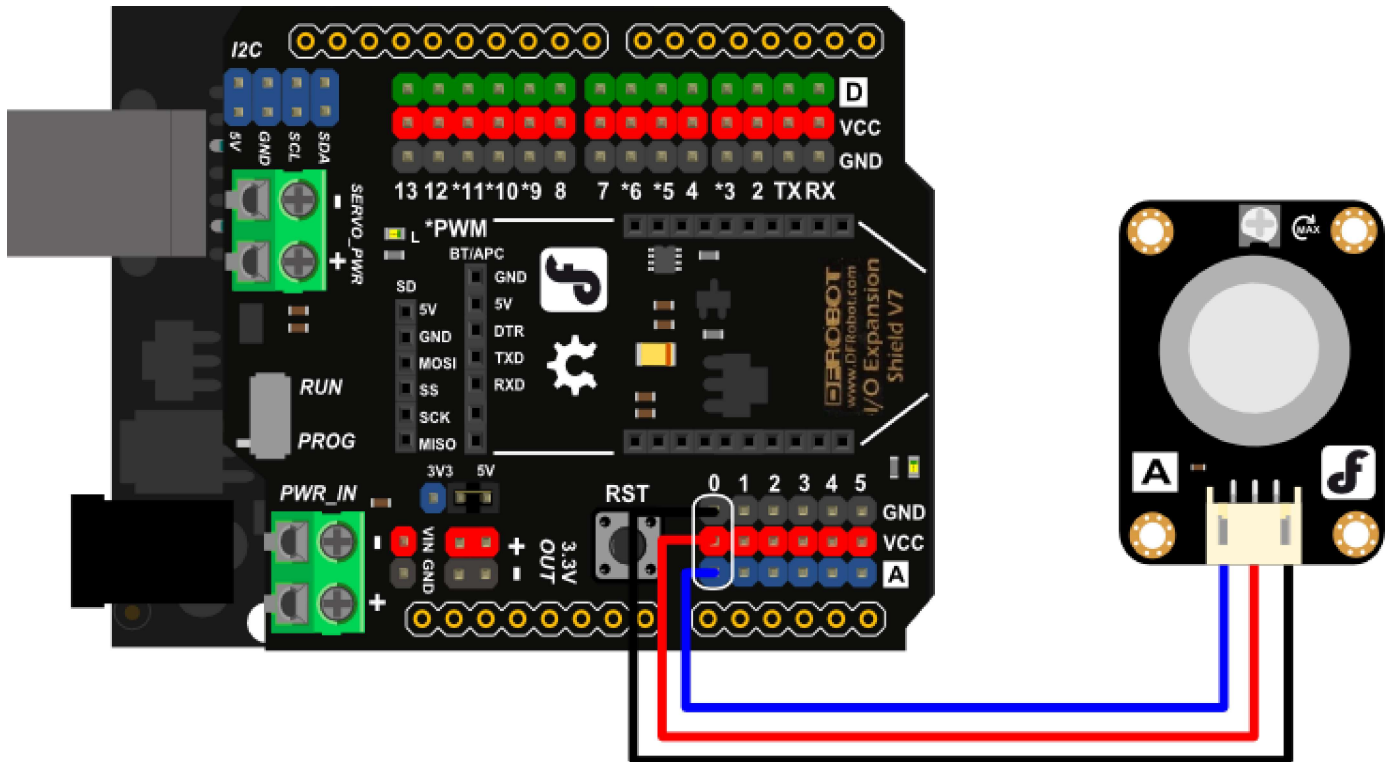
Introduction

The analog gas sensor - MQ3 is suitable for detecting alcohol, this sensor can be used in a Breathalyser. It has a high sensitivity to alcohol and small sensitivity to Benzine. The sensitivity can be adjusted by the potentiometer.

Specification

- Power supply needs: 5V
- Interface type: Analog
- High sensitivity to alcohol and small sensitivity to Benzine
- Fast response and High sensitivity
- Simple drive circuit
- Stable and long life
- Size: 36.4x26.6mm

Connecting Diagram



Sample Code

```

///Arduino Sample Code
void setup()
{
  Serial.begin(9600); //Set serial baud rate to 9600 bps
}
void loop()
{
  int val;
  val=analogRead(0); //Read Gas value from analog 0
  Serial.println(val,DEC); //Print the value to serial port
  delay(100);
}

```

Version history

Analog Gas Sensor(MQ3) V1 (https://www.dfrobot.com/wiki/index.php?title=Analog_Gas_Sensor_MQ3__SKU:SEN0128_)

More Documents

 Get Analog Gas Sensor(MQ3) (<https://www.dfrobot.com/product-682.html>) from DFRobot Store or DFRobot Distributor. (<https://www.dfrobot.com/index.php?>)

route=information/distributorslogo)

category: Product Manual (category__Product_Manual) category: SEN Series
(category__SEN_Series) category: Sensor (category__Sensor)

category: Diagram (category__Diagram) category: DFRobot (category__DFRobot)

Turn to the Top