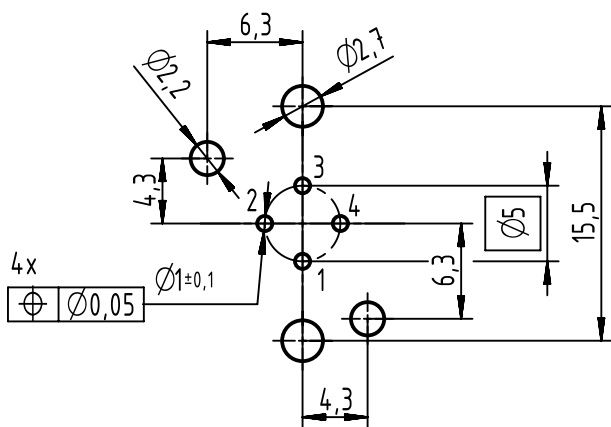
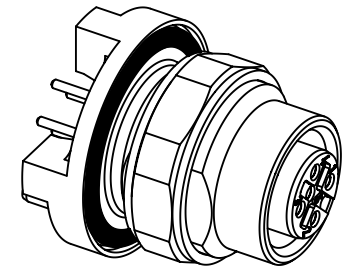
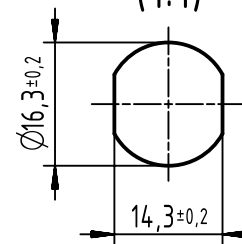


PCB layout



panel cut out
(1:1)



1 top surface PCB

recommended PCB-thickness: 1.6mm

	All rights reserved Department EC PD - DE	All Dimensions in mm Original Size DIN A4		Scale 2:1	Free size tol.	Ref.
		HARTING Electronics GmbH D-32339 Espelkamp	Created by DYCKC	Inspected by WELLMANN	Standardisation HOFFMANN	Date 2017-02-27
Title HARTING M12 PFT A-cod 4-pole female straight IP67						Doc-Key / ECM-Nr. 100196076/UGD/002/F 500000116033
Type TB				Number 21033216420		Rev. F
						Page 1/1