

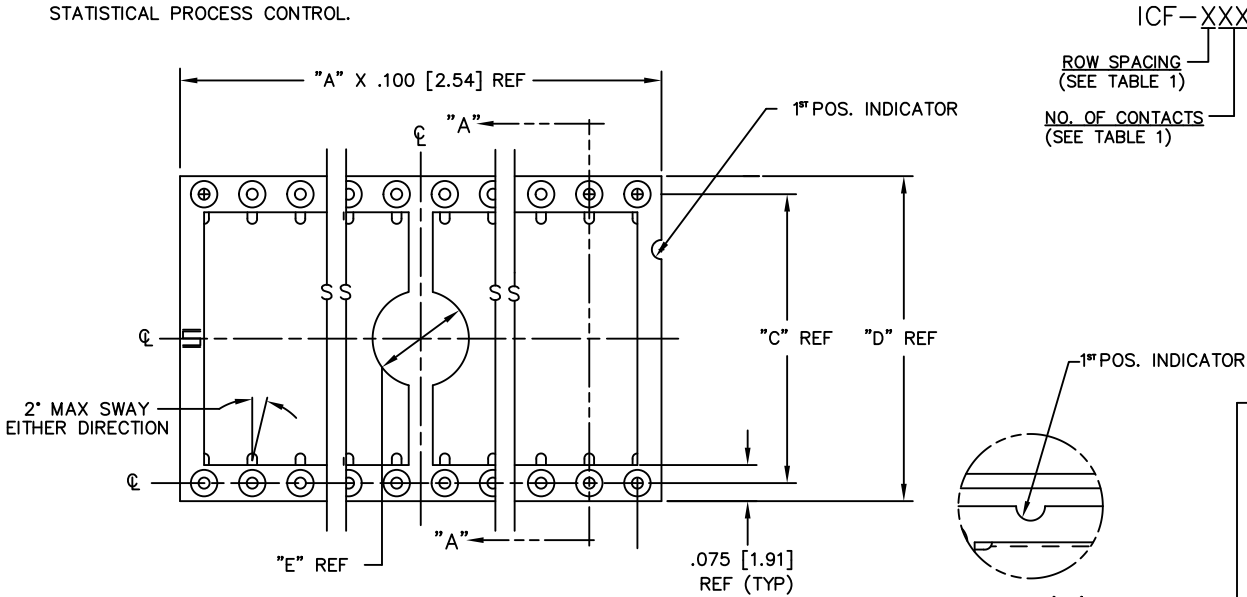
- NOTES:
 1. MIN. PUSHOUT FORCE: .5 lb.
 2. PLANARITY TO BE WITHIN .006 [.15].
 3. Ⓞ REPRESENTS A CRITICAL DIMENSION FOR STATISTICAL PROCESS CONTROL.

UNLESS OTHERWISE NOTED

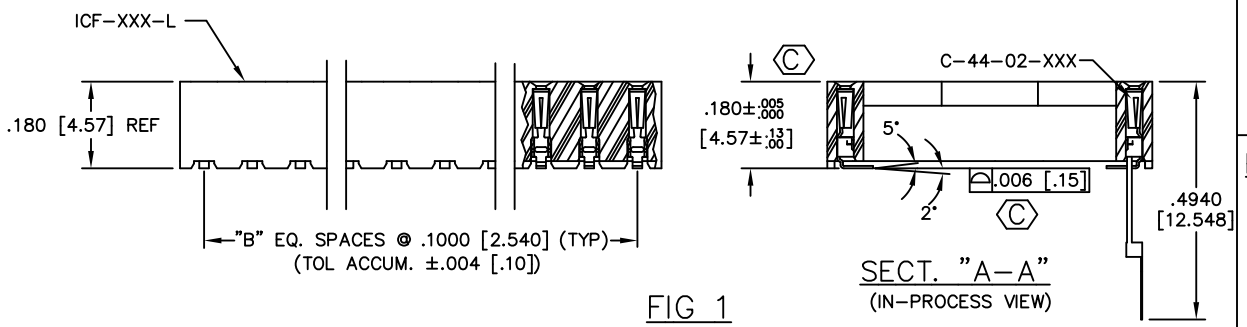
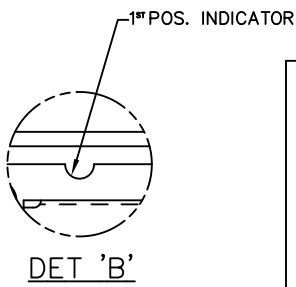
DIMENSIONS ARE IN INCHES		TOLERANCES ARE:	
ONE PLACE DECIMALS ± .1	TWO PLACE DECIMALS ± .01	THREE PLACE DECIMALS ± .005	FOUR PLACE DECIMALS ± .0020

ANGLES ± 2°

TITLE: STAMPED & FORMED DIP ASM.
 DWG NO: ICF-XXX-XXX-X-XX
 SHEET 1 OF 1



- ICF-XXX-XXX-X-XX
- ROW SPACING (SEE TABLE 1)
 - NO. OF CONTACTS (SEE TABLE 1)
 - PACKAGING OPTION
 - TR: TAPE & REEL (FIG 5)
 - LEAVE BLANK FOR TUBE (FIG 4)
 - LEAD STYLES
 - I: TAILS IN - SEE FIG. 1
 - O: TAILS OUT - SEE FIG. 2
 - PLATING SPECIFICATION
 - S: SELECTIVE (USE C-44-02-S)
 - T: TIN (USE C-44-02-T)
 - F: FLASH SELECTIVE GOLD (USE C-44-02-F)
 - TL: TIN/LEAD (USE C-44-02-TL)
 - STL: SELECTIVE TIN/LEAD (USE C-44-02-STL)
 - TM: MATTE TIN (USE C-44-02-T)
 - FM: FLASH GOLD SELECTIVE, MATTE TIN TAIL (USE C-44-02-F)
 - SM: HEAVY GOLD SELECTIVE, MATTE TIN TAIL (USE C-44-02-S)



PACKAGE PARTS IN TUBE AS SHOWN (FIG 4)

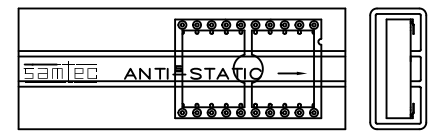
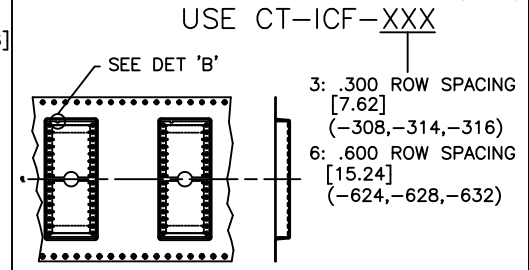


TABLE 2

SERIES	LEAD STYLE	PACKAGING TUBE	PLUG
.300	I	PT-1-24-01-25	TP-03
.600	I	PT-1-24-02-25	TP-03
.300	0	PT-1-24-03-25	TP-03
.600	0	PT-1-24-04-25	TP-03

PACKAGE PARTS IN TAPE & REEL AS SHOWN (FIG 5)



SURFACE MOUNT LEADS TO BE FACE DOWN IN THE POCKET

PLOT SCALE: 1=2

EXHIBIT ASSEMBLY/DIP ICF-ASM

samtec

520 PARK EAST BLVD. NEW ALBANY, INDIANA 47150
 PHONE (812) 944-6733 P.O. BOX 1147
 CODE 55322

MADE BY: REG REIDINGER 3-21-91

ICF-XXX-XXX-X-XX
 SHEET 1 OF 1

TABLE 1

"X"	"XX"	"A"	"B"	"C"	"D"	"E"
3	08	4	3	.3000	.375	.200
	14	7	6			
	16	8	7			
	18	9	8			
	20	10	9			
	22	11	10			
	24	12	11			
6	28	14	13	.6000	.675	.400
	24	12	11			
	28	14	13			
	32	16	15			
	40	20	19			
	48	24	23			

