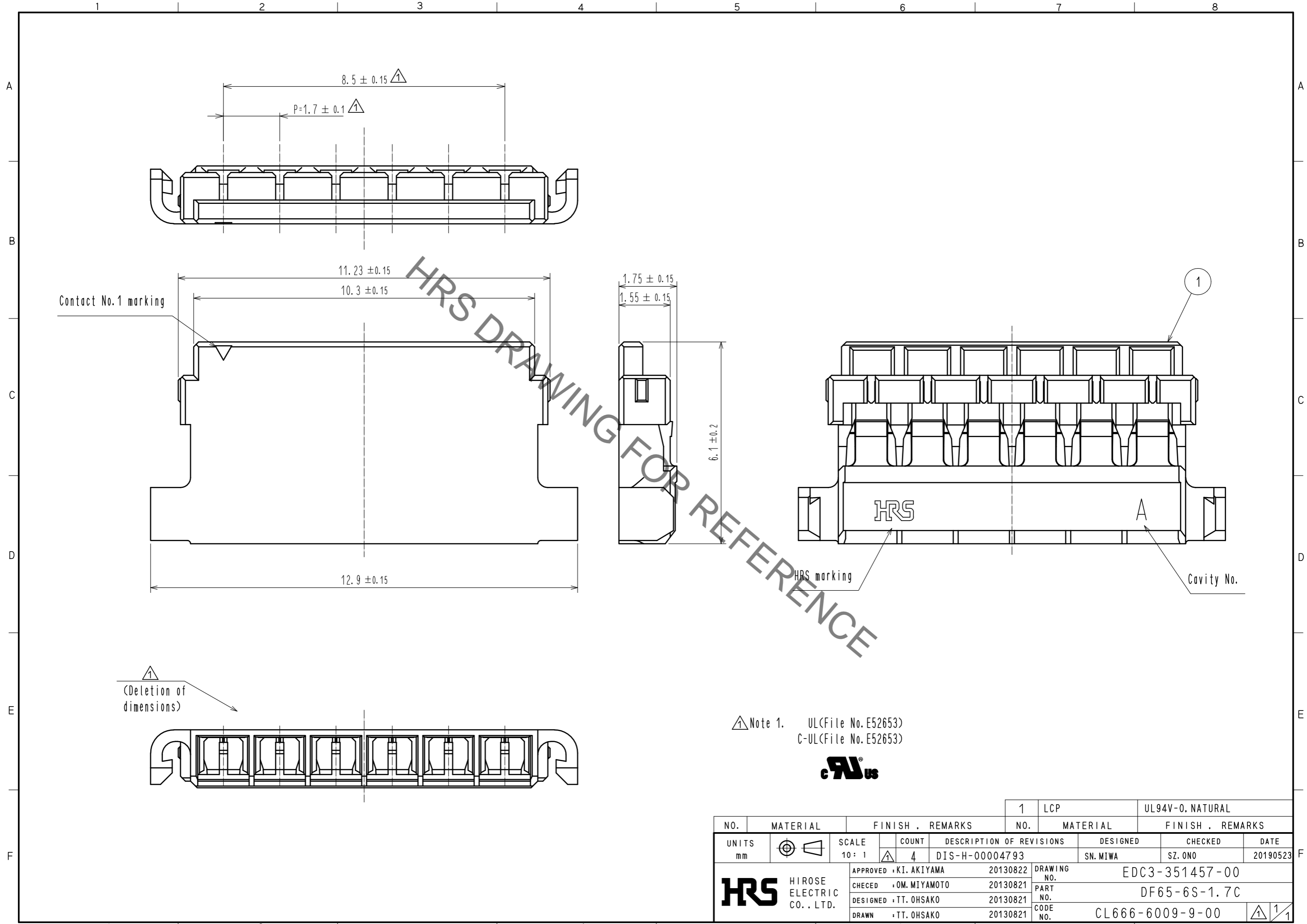


Sep.1.2019 Copyright 2019 HIROSE ELECTRIC CO., LTD. All Rights Reserved.
 In case of consideration for using Automotive equipment / device which demand high reliability, kindly contact our sales window correspondents.



Note 1. \triangle UL<File No. E52653>
 C-UL<File No. E52653>



| NO. | MATERIAL | FINISH . REMARKS | NO. | MATERIAL | FINISH . REMARKS | | |
|--------------------------------------|-------------------------|------------------------|---------------|----------------------------|------------------|-----------------|----------|
| 1 | LCP | | | UL94V-0. NATURAL | | | |
| UNITS | \odot \triangleleft | SCALE | COUNT | DESCRIPTION OF REVISIONS | DESIGNED | CHECKED | DATE |
| mm | | 10:1 | \triangle 4 | DIS-H-00004793 | SN. MIWA | SZ. ONO | 20190523 |
| HRS HIROSE ELECTRIC CO., LTD. | | APPROVED : KI. AKIYAMA | 20130822 | DRAWING NO. EDC3-351457-00 | | | |
| | | CHECED : OM. MIYAMOTO | 20130821 | PART NO. DF65-6S-1.7C | | | |
| | | DESIGNED : TT. OHSAKO | 20130821 | CODE NO. CL666-6009-9-00 | | | |
| | | DRAWN : TT. OHSAKO | 20130821 | | | \triangle 1/1 | |