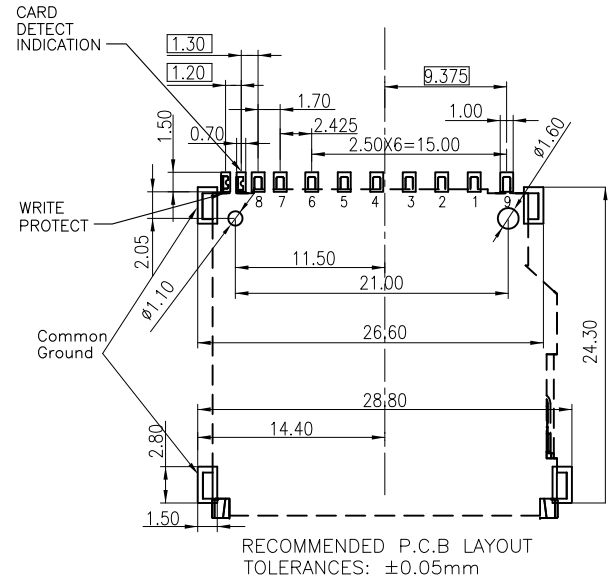


PIN#	NAME
1	CD/DAT3
2	CMD
3	VSS1
4	VDD
5	CLK
6	VSS2
7	DAT0
8	DAT1
9	DAT2

**SPECIFICATION**  
**MATERIAL**  
 Insulator: LCP UL94V-0  
 Contacts: Copper Alloy  
 Shell: Copper Alloy  
**CONTACT PLATING**  
 Underplate: 50u" Nickel  
 Contact Area: 15u" Gold Plating  
 Solder Tails Area: 100u" Tin(Lead Free)  
**ELECTRICAL**  
 Current Rating: 1 Amps Max.  
 Contact Resistance: 100 mohms Max.  
 Insulation Resistance: 1000 Mohms Min @ 500 VDC  
**MECHANICAL**  
 Mating Cycles: 10000 Cycles  
 Temperature Range: -25°C To +85°C

PRODUCT NUMBER:  
 104C-T A A 0-R  
 1 2 3 4

- 1.Type  
T:Top Mount
- 2.Contact Plating  
A:15u"Gold Plating
- 3.Stand Off  
A:0mm
- 4.RoHS



REV.	DESCRIPTION	DATE	REV.	DESCRIPTION	DATE	SIZE	REV.	FILE NAME
1			4			A4	1.0	104C-TAA0-R_B_3

UNLESS OTHERWISE SPECIFIED TOLERANCE			DRAWN NAME:	
ANGLES	ANG.	±5°	www.attend.com.tw	
LINEAR	0.	±0.3	DRAWN NAME:	
	0.0	±0.25	SD Socket Top Mount Type	
SCALE	AS SHOWN	UNIT: mm	APPROVED	Ken
				2012/08/03
DRAWN	Willis	2012/08/03	PRODUCT NO.	104C-TAA0-R
CHECKED	Angel	2012/08/03		

