



PRODUCT NUMBER
20020008-XXXXXXLF

20020008-

LF

LF: DENOTED RoHS COMPATIBLE
1 : STANDARD PRODUCT
W/ BOX PACKING

PITCH

- C: 3.50 mm
- D: 3.81 mm
- G: 5.00 mm
- H: 5.08 mm

POLES

- 02: 2 POLES
- 03: 3 POLES
- 04: 4 POLES
- 24: 24 POLES

PROPERTY TABLE		
FCI SERIES NAME	02-350 02-381 02-500 02-508	
PITCH (mm)	3.50 3.81 5.00 5.08	
VOLTAGE RATING (VAC)	300 300 300 300	
CURRENT RATING (A)	8 8 12 12	
VDE	10 10 NA NA	
APPLICABLE WIRE RANGE (AWG)	1-WIRE 16~28 16~28 12~24 12~24	
	2-WIRE 20 20 18 18	
WIRE CROSS SECTION (mm ²)	SOLID	1.5 1.5 2.5 2.5
	STRANDED	0.5 0.5 1.0 1.0
OPENING CONTACT HOUSING(mm ²)	1-WIRE 1.5 1.5 2.5 2.5	
	2-WIRE 0.75 0.75 1.5 1.5	
WIRE STRIP LENGTH(mm)	2.8x1.7 2.8x1.7 2.6x3.2 2.6x3.2	
TORQUE +/-10% (N-m/Lb-in)	6~7 6~7 6~7 6~7	
	0.19/1.7 0.19/1.7 0.4/3.5 0.4/3.5	
WITHSTANDING VOLTAGE (kV)	M2x0.4 M2x0.4 M3x0.5 M3x0.5	
	cUlus 1.6 1.6 1.6 1.6	
	VDE 2.5 2.5 NA NA	
OPERATING TEMP. (°C)	-40~+115 -40~+115 -40~+115 -40~+115	
POLES AVAILABLE	02~24 02~24 02~24 02~24	
SAFETY CERTIFICATE		

HOUSING CODE	COLOR	AVAILABILITY
1	GREEN(RAL 6018/T)	STANDARD
2	BLACK	ON REQUEST ONLY
3	GREY(RAL 7004/P)	ON REQUEST ONLY
4	BLUE(RAL 5015/A)	ON REQUEST ONLY
5	YELLOW	ON REQUEST ONLY

SCREW CODE	SCREW TYPE	AVAILABILITY
A	-/+	ON REQUEST ONLY
B	-	STANDARD

PRINTING CODE	POSITION	MARKING
0	NONE	NONE
3	SIDE4,3,2,1
5	SIDEC,B,A,-,+

- NOTES:
- MATERIALS
 - 1-1 HOUSING: THERMALPLASTIC RESIN, UL 94V-0 RATED,
 - 1-2 SCREW: STEEL, ZINC PLATED.
 - 1-3 CLAMP: COPPER ALLOY, NICKEL PLATED.
 - 1-4 TERMINAL: COPPER ALLOY, TIN PLATED.
 - PRODUCT SPECIFICATION REFER TO FCI GS-12-625.
 - PRODUCT PACKING SPECIFICATION REFER TO FCI GS-14-1394.
 - FCI, SAFETY CERTIFICATE LOGO AND SERIES NAME TO BE SHOWN ON PRODUCT SURFACE.
 - THE PRODUCTS WHERE THE PART NUMBER END IN "LF" MEET THE EUROPEAN UNION DIRECTIVE AND OTHER COUNTRY REGULATIONS AS DESCRIBED IN GS-22-008.

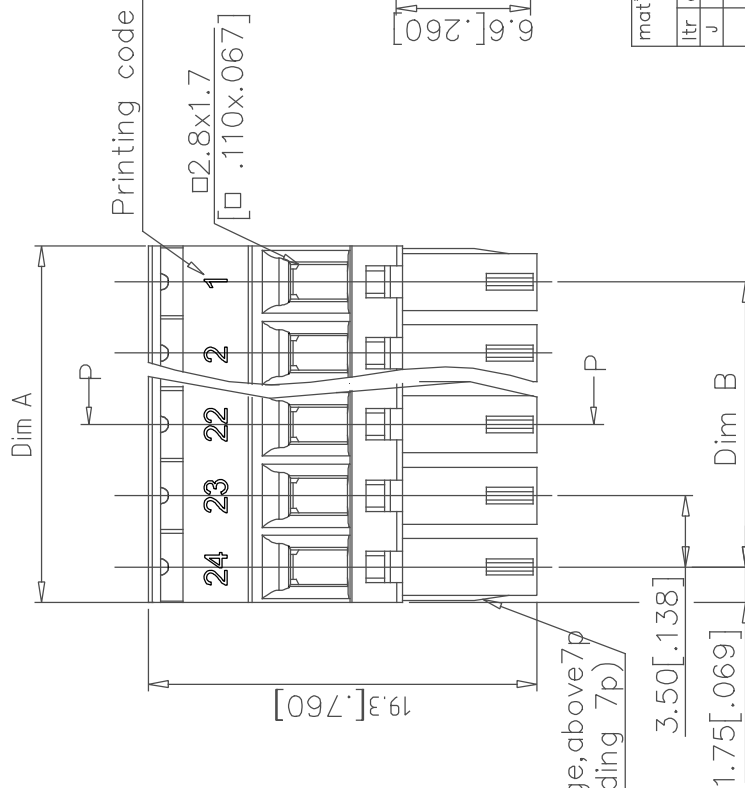
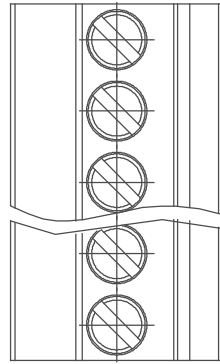
mat'l. code	surface	tolerance	projection	product family	TERMINAL BLOCK
itr	ASME Y14.5	ASME Y14.5			
D	T10-0042 WL	0.30310	MM	TERMINAL BLOCK	
E	T10-0082 WL	0.80510	MM	Pluggable plug, hook entry side	
F	T10-0172 WL	102010	MM		
G	T11-0013 WL	040811	MM		
H	T-004746 WL	072011	MM		
J	T-012872 LS	091912	MM		
sheet index	revision sheet	J J J J J J	J J J J J J	20020008	sheet 1 of 5
		1 2 3 4 5		type	A4
				CUSTOMER Drawing	



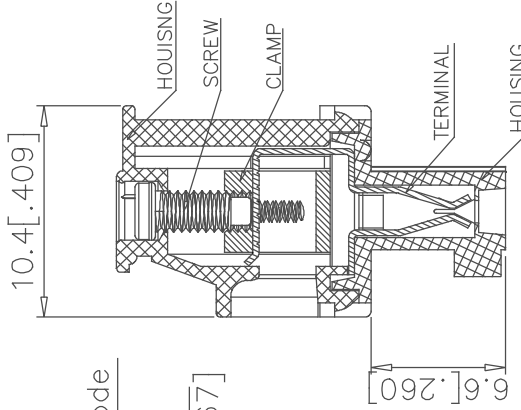
FCIconnect.com

Copyright FCI.

PRODUCT NUMBER	SERIES NAME	PITCH
20020008-CXXXXXXLF	02-350	3.50 mm



2p to 6p with wedge, above 7p
without wedge (including 7p)



SECTION P-P

N= NUMBER OF POLES
DIMENSION

Dim A	N*3.5 [.138]
Dim B	(N-1)*3.5 [.138]

Poles	Tolerance
2P-6P	±0.15 [.006]
7P-12P	±0.20 [.008]
13P-18P	±0.25 [.010]
19P-24P	±0.30 [.012]

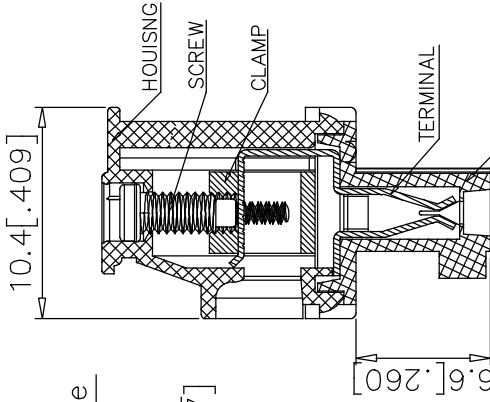
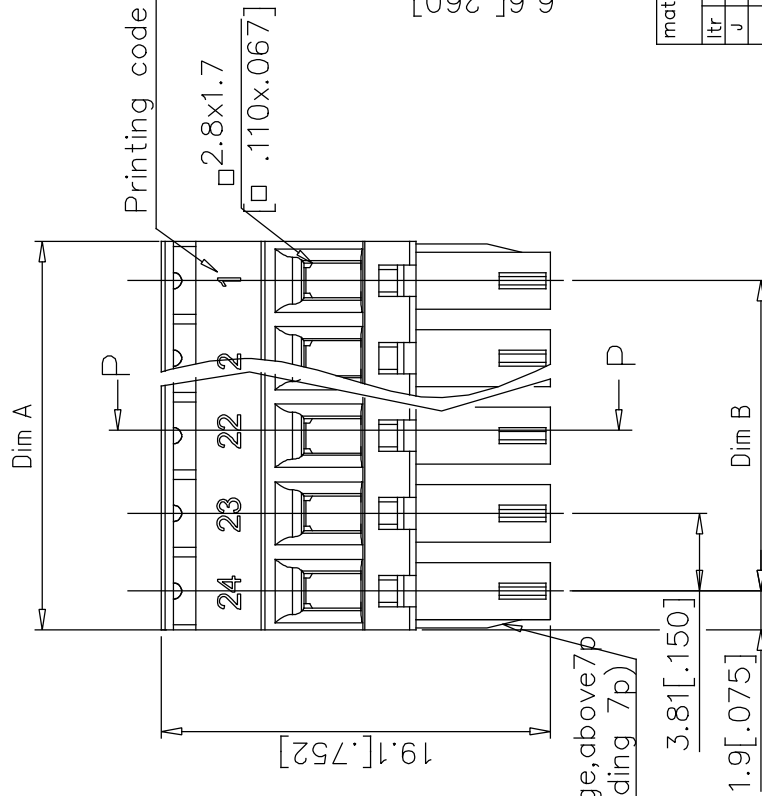
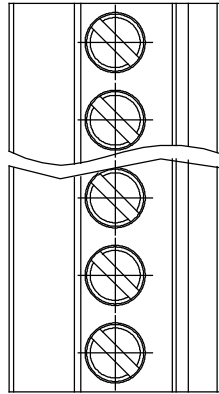
mat'l. code	surface	tolerance	projection	product family	TERMINAL BLOCK
J	ASME Y14.5	ASME Y14.5		terminal block	
tr	ecn no	date	tolerances unless otherwise specified	title	TERMINAL BLOCK PLUGABLE, PLUG, SIGNAL, ENTRYSIDE HOOK
	no		angles	dwg no	sheet 2 of 5 size
	dr		X: ±1°	20020008	A4
	engr		X.X ±0.3 [.012]	type	CUSTOMER Drawing
	chr		X.XX ±0.1 [.004]		
	appd		dr BEER FU 062509		
			enr BEER FU 062509		
			chr GARY HSEIH 062509		
			appd JOSEPH HSIA 062509		
sheet	revision		scale		
index	sheet		MM		
			[INCH]		
			FCI		



FCIconnect.com

Copyright FCI.

PRODUCT NUMBER	SERIES NAME	PITCH
20020008-DXXXXXXLF	02-381	3.81 mm



N= NUMBER OF POLES
DIMENSION

Dim A	N*3.81 [.150]
Dim B	(N-1)*3.81 [.150]

Poles	Tolerance
2P-6P	±0.15 [.006]
7P-12P	±0.20 [.008]
13P-18P	±0.25 [.010]
19P-24P	±0.30 [.012]

SECTION P-P

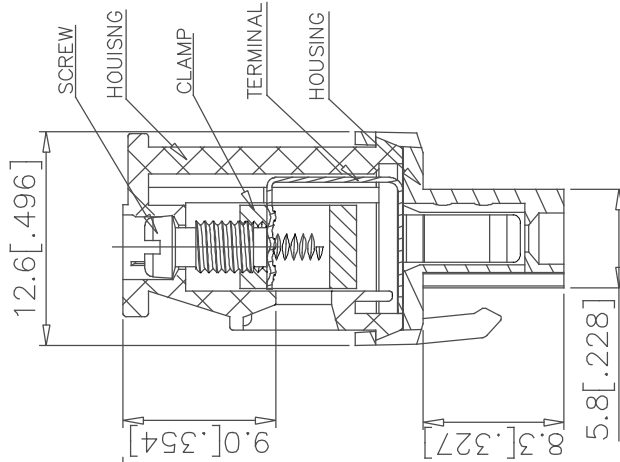
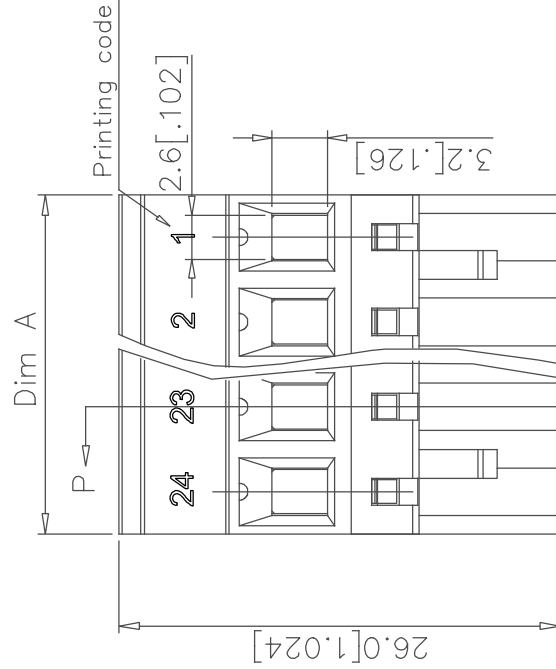
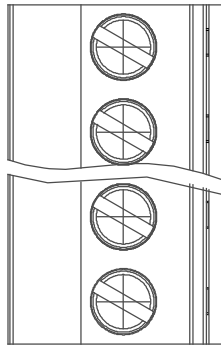
mat'l. code	surface	tolerance	projection	product family	TERMINAL BLOCK
itr	ASME Y14.5	ASME Y14.5	projection	title	TERMINAL BLOCK
ecn	tolerances unless otherwise specified	X. ±0.5 [.020]	MM	TERMINAL BLOCK	PLUGABLE, PLUG, SIGNAL, ENTRY/SIDE HOOK
no	angles	X.X ±0.3 [.012]	[INCH]	dwg no	sheet 3 of 5 size
dr	X:±1	X.XX ±0.1 [.004]	scale	20020008	A4
date	dr	BEER FU 062509	FCI	type	CUSTOMER Drawing
	engr	BEER FU 062509			
	chr	GARY HSEIH 062509			
	appd	JOSEPH HSIA 062509			
sheet	revision				
index	sheet				



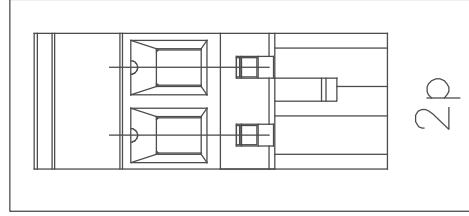
FCIconnect.com

Copyright FCI.

PRODUCT NUMBER	SERIES NAME	PITCH
20020008-GXXXXXXLF	02-500	5.00 mm



SECTION P-P



N= NUMBER OF POLES
DIMENSION

Dim A	Nx5.0 [.197]
Dim B	(N-1)x5.0 [.197]

Poles	Tolerance
2P-6P	±0.15 [.006]
7P-12P	±0.25 [.010]
13P-18P	±0.30 [.012]
19P-24P	±0.40 [.016]

mat'l. code	surface	tolerance	projection	product family	TERMINAL BLOCK
itr	ASME Y14.5	ASME Y14.5	MM	title	TERMINAL BLOCK
ecn	tolerances unless otherwise specified	X. ±0.5 [.020]	INCH	TERMINAL BLOCK	PLUGABLE, PLUG, SIGNAL, ENTRYSIDE HOOK
no	angles	X.X ±0.3 [.012]	scale	dwg no	sheet 4 of 5 size
dr	X:±1	X.XX ±0.1 [.004]	FCI	20020008	A4
date	dr	BEER FU 062509		type	CUSTOMER Drawing
	engr	BEER FU 062509			
	chr	GARY HSEIH 062509			
	appd	JOSEPH HSIA 062509			
sheet	revision				
index	sheet				

form: A4mmXc

2

3

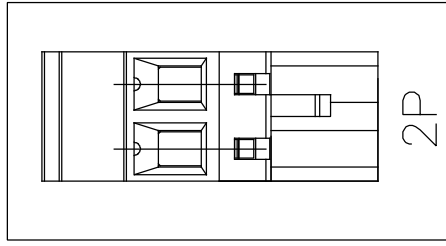
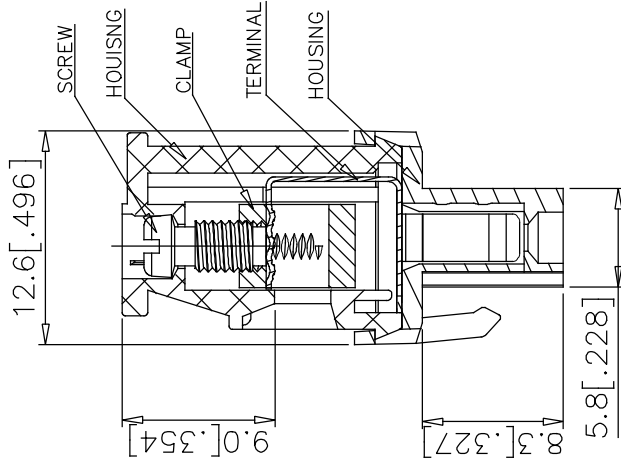
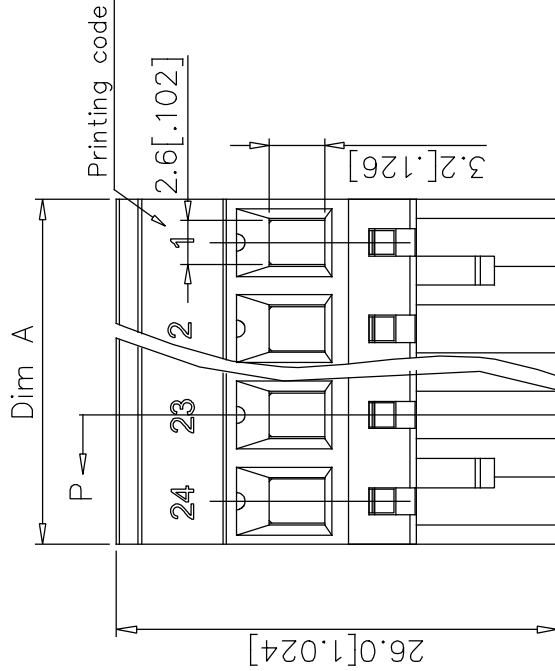
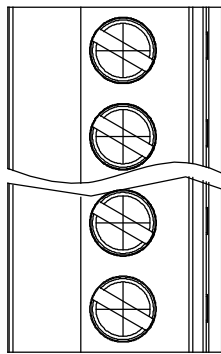
4



FCIconnect.com

Copyright FCI.

PRODUCT NUMBER	SERIES NAME	PITCH
20020008-HXXXXXXLF	02-508	5.08 mm



N= NUMBER OF POLES
DIMENSION

Dim A	Nx5.08 [.200]
Dim B	(N-1)x5.08 [.200]

Poles	Tolerance
2P-6P	±0.15 [.006]
7P-12P	±0.25 [.010]
13P-18P	±0.30 [.012]
19P-24P	±0.40 [.016]

SECTION P-P

mat'l. code	surface	tolerance	projection	product family	TERMINAL BLOCK
itr	ASME Y14.5	ASME Y14.5	MM	title	TERMINAL BLOCK
ecn	tolerances unless otherwise specified	X. ±0.5 [.020]	[INCH]	TERMINAL BLOCK	PLUGABLE, PLUG, SIGNAL, ENTRYSIDE HOOK
no	angles	X.X ±0.3 [.012]	scale	dwg no	sheet 5 of 5size
dr	X±1°	X.XX ±0.1 [.004]	FCI	20020008	A4
date	dr	BEER FU 062509		type	CUSTOMER Drawing
	engr	BEER FU 062509			
	chr	GARY HSEIH 062509			
	appd	JOSEPH HSIA 062509			
sheet	revision				
index	sheet				