

Mark with 10034542		www.fciconnect.com	
REV. P		TOLERANCES UNLESS OTHERWISE SPECIFIED	
in area indicated by X.....			
rev	ec n o	dr	date
N	D607-0308	CS	27/07/07
P	D607-0416	CS	22/10/07
Dr CHARLIE S		02/10/04	
Eng CHARLIE S		02/10/04	
Chr HSTEH GARY		02/10/04	
Appr JOSEPH HSIA		02/10/04	

surface	tolerance	std	projection	MM
ANGULAR	0.X	±.38	size	A4
LINEAR	0.XX	±.25	Scale	0.500
0° ±2°	0.XXX	±.13	ECN	T04-0061
Product family				Spec ref
DDR I I 240P PRESS-FIT				10034542
Rev.				P

DETAIL C
SCALE 3.000

DETAIL B
SCALE 5.000

www.fciconnect.com

Dr CHARLIE S 02/10/04

Eng CHARLIE S 02/10/04

Chr HSTEH GARY 02/10/04

Appr JOSEPH HSIA 02/10/04

Product family

DDR I I 240P PRESS-FIT

Rev. 10034542

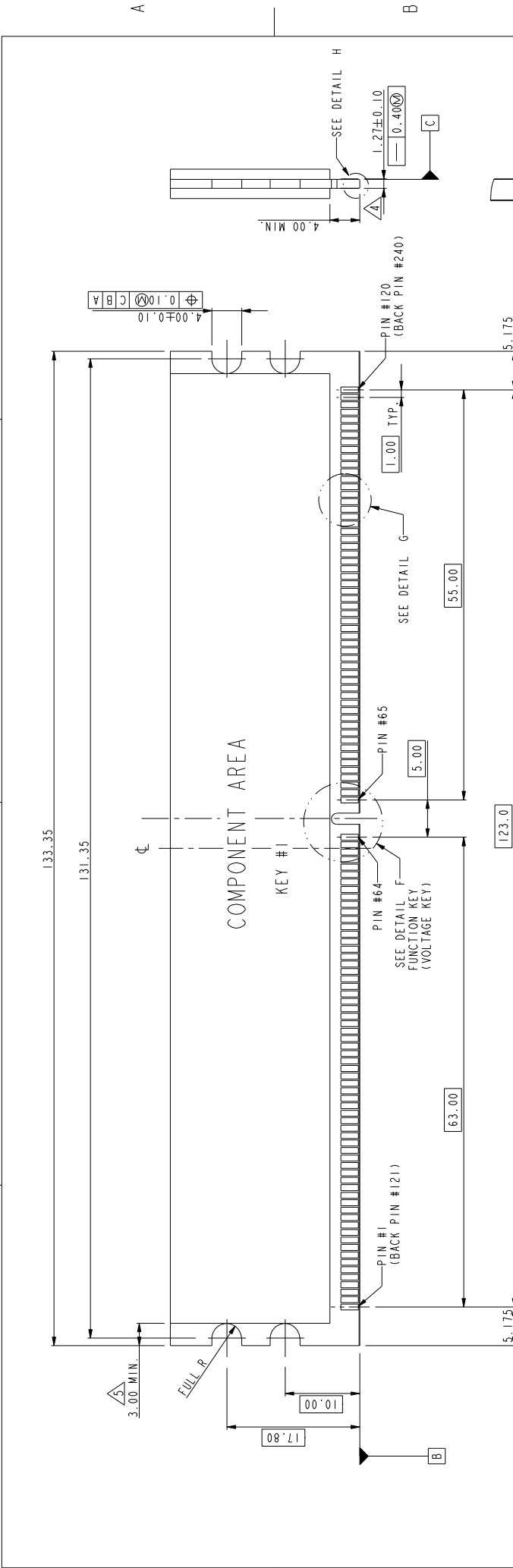
P

4

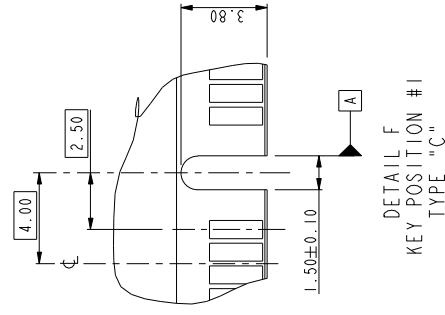
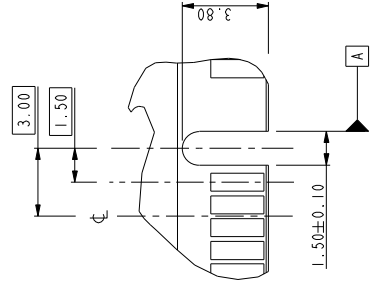
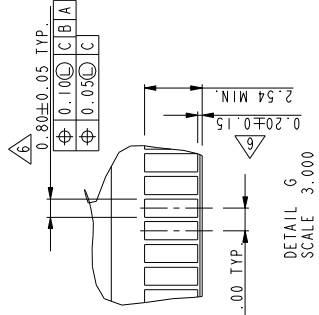
3

2

1



DETAIL H
SCALE 3.000



tolerance unless otherwise specified	X ± .38
	linear .XX ± .25 .XXX ± .13
	angles 0° ± 2°

NOTE:
1. MATERIAL : FR-4.
2. FINISH : SOLDER MASK.
3. BURR : 0.08 MAX.

TYPE "L"	2.5 VOLTAGE
TYPE "C"	1.8 VOLTAGE
SUB KEY POS #1	DESCRIPTION



DDR I I 240P PRESS-FIT

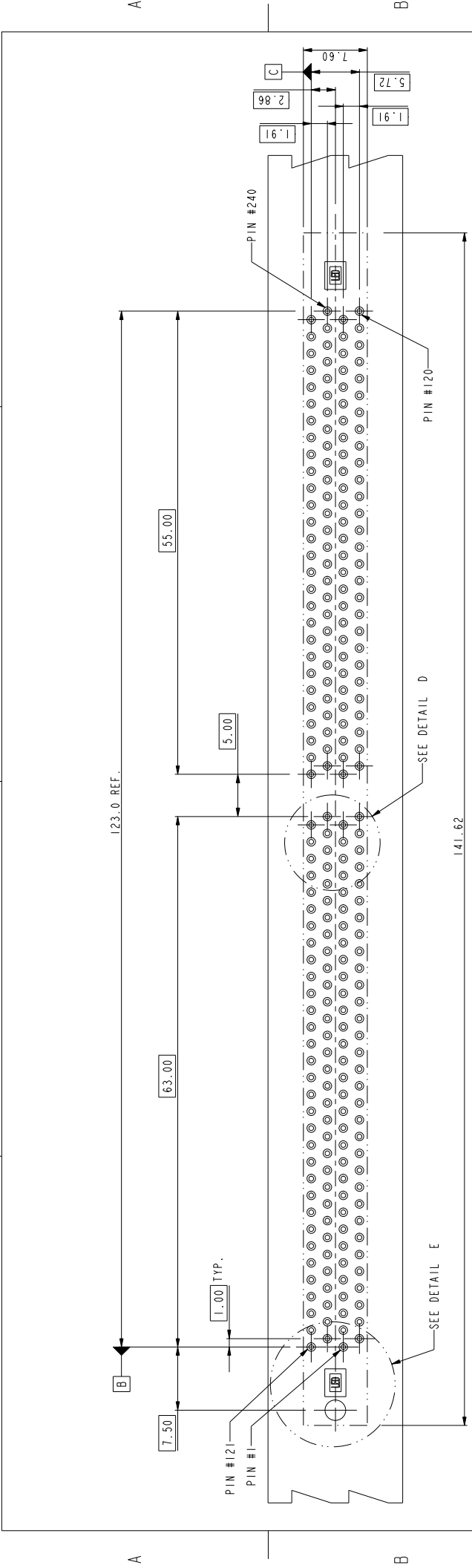
10034542

STATUS: **Released** PDM: **Rev:P** Printed: Jul-26-2010

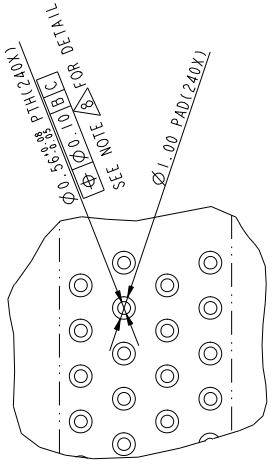
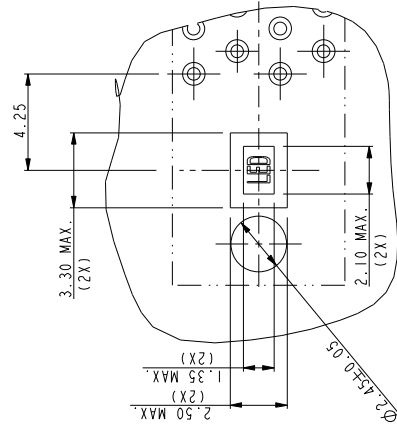
REV. F - 2008-04-17



Copyright FCI.



RECOMMEND CIRCUIT BOARD HOLE LAYOUT



DETAIL E
SCALE 3.000

DETAIL D
SCALE 3.000

tolerance unless otherwise specified	X ± .38
	linear .XX ± .25
	.XXX ± .13
	angles 0° ± 2°

	DDR I I 240P PRESS-FIT	10034542	Rev. P
	catalog	PDM: Rev:P	STATUS Released

10034542-□□□□□□□□□□

STYLE: MECHANICAL KEYING

- 1 : 1.8 VOLT. W/CENTER KEY #1
- 2 : 2.5 VOLT. W/LEFT KEY #1

REVISE

0

TAIL LENGTH

CODE	DIM. "D"
0	3.30
1	3.70
2	4.20

PLATING

CODE	CONTACT	TAIL AREA	UNDERPLATE	CODE	CONTACT	TAIL AREA	UNDERPLATE
2	15u" (0.38um) MIN. GOLD	35u"~100u" Tin PLATING	50u" (1.27um) MIN. NICKEL OVERALL	2B	15u" (0.38um) MIN. GOLD	35u"~100u" Tin/Lead PLATING	50u" (1.27um) MIN. NICKEL OVERALL
3	30u" (0.76um) MIN. GOLD			3B	30u" (0.76um) MIN. GOLD		
4	3u" (0.076um) MIN. GOLD			4B	3u" (0.076um) MIN. GOLD		
6	15u" (0.38um) MIN. GOLD (LUBRICATED)			6B	15u" (0.38um) MIN. GOLD (LUBRICATED)		
7	30u" (0.76um) MIN. GOLD (LUBRICATED)	35u"~100u" Tin PLATING	50u" (1.27um) MIN. NICKEL OVERALL	7B	30u" (0.76um) MIN. GOLD (LUBRICATED)	35u"~100u" Tin/Lead PLATING	50u" (1.27um) MIN. NICKEL OVERALL
8	3u" (0.076um) MIN. GOLD (LUBRICATED)			8B	3u" (0.076um) MIN. GOLD (LUBRICATED)		
2LF	15u" (0.38um) MIN. GOLD	35u"~100u" Tin PLATING	50u" (1.27um) MIN. NICKEL OVERALL	2LF	15u" (0.38um) MIN. GOLD	35u"~100u" Tin PLATING	50u" (1.27um) MIN. NICKEL OVERALL
3LF	30u" (0.76um) MIN. GOLD			3LF	30u" (0.76um) MIN. GOLD		
4LF	3u" (0.076um) MIN. GOLD			4LF	3u" (0.076um) MIN. GOLD		
6LF	15u" (0.38um) MIN. GOLD (Lubricated)			6LF	15u" (0.38um) MIN. GOLD (Lubricated)		
7LF	30u" (0.76um) MIN. GOLD (LUBRICATED)	35u"~100u" Tin PLATING	50u" (1.27um) MIN. NICKEL OVERALL	7LF	30u" (0.76um) MIN. GOLD (LUBRICATED)	35u"~100u" Tin PLATING	50u" (1.27um) MIN. NICKEL OVERALL
8LF	3u" (0.076um) MIN. GOLD (LUBRICATED)			8LF	3u" (0.076um) MIN. GOLD (LUBRICATED)		

COLOR OF HOUSING AN EJECTOR

- 0 : BLACK HOUSING + IVORY EJECTOR
- 1 : BLACK HOUSING + AMBER EJECTOR
- 2 : BLACK HOUSING + BLACK EJECTOR
- 3 : BLUE HOUSING + IVORY EJECTOR
- 4 : BLUE HOUSING + AMBER EJECTOR

NOTE:

- MATERIAL: HOUSING: HIGH PERFORMANCE RESINS, GLASS FILLED UL94V-0 RATED, COLOR: BLACK. EJECTOR: HIGH PERFORMANCE RESINS, GLASS FILLED UL94V-0 RATED, COLOR: NATURAL. TERMINAL: COPPER ALLOY.
- FCI LOGO TO BE APPROXIMATELY LOCATED AS SHOWN ON PRINT.
- PRODUCT SPECIFICATION: GS-12-273
- CARD THICKNESS APPLIES ACROSS TABS AND INCLUDES PLATING AND / OR METALIZATION.
- 3.00mm MINIMUM APPLIES TO BOTH 4.00mm WIDE NOTCH LENGTH AND COMPONENT KEEPOUT AREA.
- LEADING EDGE OF CONTACT PADS SPECIFIED BY THE KEEP OUT ZONE SHALL BE FREE OF BURRS AND EXTERNAL TIE BARS. FOR OPTIMUM PERFORMANCE, THE TIE BAR IS TO BE ON AN INTERNAL LAYER SO THAT THE REMNANT CANNOT CAUSE CONTACT DAMAGE.
- PACKAGING SPECIFICATION: GS-14-528.
- ALL PTH SHOULD BE 0.66mm DIA DRILLED AND 0.025mm MIN. ELECTRO-DEPOSITED COPPER THK ON THROUGH HOLE WALL.
- THIS PRODUCT MEETS EUROPEAN UNION DIRECTIVES AND OTHER COUNTRY REGULATIONS AS DESCRIBED IN GS-22-008.
- THE HOUSING WILL WITHSTAND EXPOSURE TO 260° PEAK TEMPERATURE FOR 20 SECONDS IN A IR REFLOW OVEN.
- DATE CODE: X X X X X X

YEAR _____
 DATE _____
 MONTH _____

DDR I I 240P PRESS-FIT

ou gmp

10034542

Rev. P

