

61

6322

Screw terminal blocks, pitch 3.5/5.0/10.0 mm



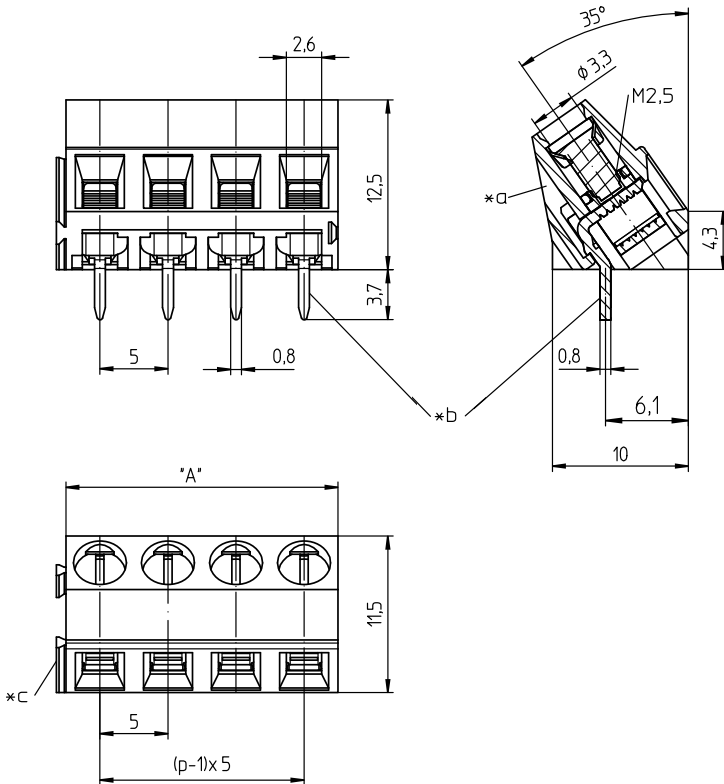
Miniature screw terminal block, with lift clamp without protection against misplacing, 35° angle version, with test hole, consecutive placement without loss of pitch contact pitch 5.0 mm

Approvals:



61

6322



- *a hole for test spike $\varnothing 1.3$ mm
- *b solder pin for printed circuit board bore hole $\varnothing 1.3$ mm
- *c dovetail joint without loss of pitch

Environmental conditions

Temperature range -25 °C/+125 °C¹

¹ upper limit temperature (insulating body) RTI (electrical) of the UL Yellow Card

Materials

Insulating body	PA, V-2 according to UL94
Clamp	steel, zinc-plated and chromatiert
Wire protector	CuZn, pre-nickel and tin-plated
Screw	steel, zinc-plated and chromatiert

Mechanical data

Screw size	M2.5
Tightening torque screw	0.4 Nm

Connectable conductors for screw clamp

Section stranded wire	0.2–2.5 mm ² (VDE) AWG 24–14 (UL)
Section stranded wire with ferrule	0.2–1.5 mm ² (AWG 24–16)
Section solid wire	0.2–2.5 mm ² (VDE) AWG 24–14 (UL)
Stripping length	7.0 ± 0.5 mm

Electrical data (at T_{amb} 20 °C)

Rated current	16 A (T _{amb} 100 °C, VDE) 16 A (UL)
Rated voltage	250 V AC (VDE) 300 V (UL) ¹
Material group	I (IEC)/0 (UL) (CTI ≥ 600) ²
Creepage distance	3,6 mm
Clearance	3,4 mm
Insulation resistance	> 10 GΩ

¹ according to IEC 60664/DIN EN 60664, CTI UL classification according to ANSI/UL 746A

² according to IEC 60664/DIN EN 60664, CTI UL classification according to ANSI/UL 746A

61

6322

Designation	Pole Number	PU (Pieces)	MDQ (Pieces)	Dimensions A (mm)
6322 02	2	200	1000	10
6322 03	3	200	1000	15
6322 04	4	200	1000	20

Packaging:

in bulk, in a cardboard box