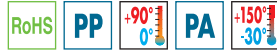




Lobe knobs



Material

High-resilience polypropylene based (PP) technopolymer.
 VCT.25: glass-fibre reinforced polyamide based (PA) technopolymer.
 VCT.AE-V0: glass-fibre reinforced polyamide based (PA) technopolymer certified self-extinguishing UL-94 V0.
 Resistant to solvents, oils, greases and other chemical agents.

Colour

Black, matte finish.

Coloured centre cap

Technopolymer, matte finish. Not available for VCT.25.
 To order, add the index of the desired colour (C9, ..., C6) to the code and the description.
 On request and for sufficient quantities it can be supplied in other colours or with customised graphic symbols, marks or writings.

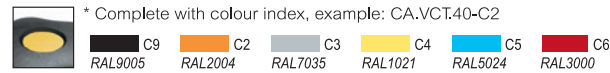
Standard executions

- **VCT.FP:** brass boss, threaded pass-through hole.
- **VCT-A:** black-oxide steel boss, plain blind hole.
- **VCT-B:** brass boss, threaded blind hole (VCT.25 - 95) or threaded pass-through hole (VCT.32 - 40 - 50 - 63 - 74).
- **VCT-p:** zinc-plated steel threaded stud, chamfered flat end according to UNI 947 : ISO 4753 (see Technical data).
- **VCT.AE-V0:** Brass boss with threaded blind hole (VCT.25) or pass-through hole (VCT. from 32 to 50).

Accessories on request (for VCT-FP)

Coloured centre caps (see table).

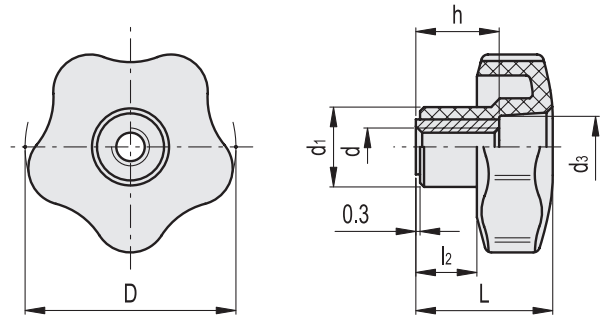
Cap for	C9	C2	C3	C4	C5	C6	Description
VCT.32	6900	6903	6904	6905	6906	6901	CA.VCT.32-*
VCT.40	6910	6913	6914	6915	6916	6911	CA.VCT.40-*
VCT.50	6920	6923	6924	6925	6926	6921	CA.VCT.50-*
VCT.63-74-95	6930	6933	6934	6935	6936	6931	CA.VCT.63-74-95-*



Technical data

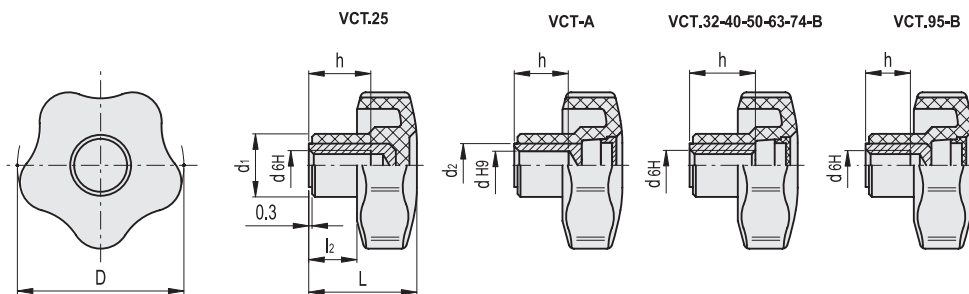
VCT.AE-V0: in long-term thermal ageing tests, with a maximum decrease in critical mechanical properties by 50%, the relative temperature index UL 746 B (RTI) was equal to 65.

The "V0" certification in accordance with UL-94 V (Underwriters Laboratories) indicates that on a plastic test sample with specific shape and dimensions, in the vertical position, the flame is extinguished within 10 seconds, without generating incandescent drops.



VCT.FP

Code	Description	D	d _H	L	d ₁	d ₃	l ₂	h	⚖
69847	VCT.32 FP-M5	32	M5	23	15	10	10	12	11
69848	VCT.32 FP-M6	32	M6	23	15	10	10	12	10
69849	VCT.32 FP-M8	32	M8	23	15	10	10	12	9
69897	VCT.40 FP-M6	40	M6	27	17	12	12	18	26
69898	VCT.40 FP-M8	40	M8	27	17	12	12	18	24
69899	VCT.40 FP-M10	40	M10	27	17	12	12	17	23
69956	VCT.50 FP-M8	50	M8	32	19	15	14	20	38
69957	VCT.50 FP-M10	50	M10	32	19	15	14	20	34
69958	VCT.50 FP-M12	50	M12	32	19	15	14	20	30
70016	VCT.63 FP-M8	63	M8	37	22	19	16	26	44
70017	VCT.63 FP-M10	63	M10	37	22	19	16	26	42
70018	VCT.63 FP-M12	63	M12	37	22	19	16	26	40
70067	VCT.74 FP-M12	74	M12	43.5	26	17	22	26	56
70068	VCT.74 FP-M14	74	M14	43.5	26	17	22	26	52
70069	VCT.74 FP-M16	74	M16	43.5	26	17	22	31	54



* Complete with colour index, example: 69843-C2 VCT.32 B-M5-C2.

C9
 C2
 C3
 C4
 C5
 C6
 RAL9005 RAL2004 RAL7035 RAL1021 RAL5024 RAL3000

VCT-A

Code	Description	D	d _{H9}	L	d ₁	d ₂	l ₂	h	
69892-*	VCT.40 A-8-*	40	8	27	17	12	12	14	36
69951-*	VCT.50 A-8-*	50	8	32	19	12	14	14	37
69952-*	VCT.50 A-10-*	50	10	32	19	15	14	16	34
70001-*	VCT.63 A-8-*	63	8	37	22	15	16	20	52
70002-*	VCT.63 A-10-*	63	10	37	22	16	16	21	49
70051-*	VCT.74 A-8-*	74	8	43.5	26	15	22	20	65

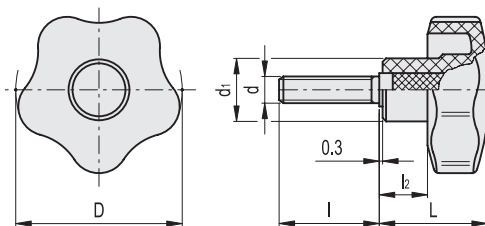
VCT-B

Code	Description	D	d _{6H}	L	d ₁	l ₂	h	C# [Nm]	
69811-C9	VCT.25 B-M4-C9	25	M4	19	13	8	10	6	7
69812-C9	VCT.25 B-M5-C9	25	M5	19	13	8	10	7	6
69813-C9	VCT.25 B-M6-C9	25	M6	19	13	8	10	7	5
69843-*	VCT.32 B-M5-*	32	M5	23	15	10	12	10	11
69844-*	VCT.32 B-M6-*	32	M6	23	15	10	12	10	10
69845-*	VCT.32 B-M8-*	32	M8	23	15	10	12	10	9
69893-*	VCT.40 B-M6-*	40	M6	27	17	12	18	16	26
69894-*	VCT.40 B-M8-*	40	M8	27	17	12	18	18	24
69895-*	VCT.40 B-M10-*	40	M10	27	17	12	17	18	23
69953-*	VCT.50 B-M8-*	50	M8	32	19	14	20	25	38
69954-*	VCT.50 B-M10-*	50	M10	32	19	14	20	27	34
69955-*	VCT.50 B-M12-*	50	M12	32	19	14	20	27	30
70012-*	VCT.63 B-M8-*	63	M8	37	22	16	26	48	45
70013-*	VCT.63 B-M10-*	63	M10	37	22	16	26	50	42
70014-*	VCT.63 B-M12-*	63	M12	37	22	16	26	50	40
70062-*	VCT.74 B-M12-*	74	M12	43.5	26	22	26	60	57
70063-*	VCT.74 B-M14-*	74	M14	43.5	26	22	26	65	53
70064-*	VCT.74 B-M16-*	74	M16	43.5	26	22	31	69	55
70097-*	VCT.95 B-M16-*	95	M16	46	32	21	22	100	109

VCT.AE-V0

Code	Description	D	d _{6H}	L	d ₁	l ₂	h	
150534	VCT.25 AE-V0 B-M5	25	M5	19	13	8	10	6
150544	VCT.32 AE-V0 B-M6	32	M6	23	15	10	12	11
150564	VCT.40 AE-V0 B-M8	40	M8	27	17	12	18	24
150584	VCT.50 AE-V0 B-M10	50	M10	32	19	14	26	34

"Max limit Tightening torque" means the max torque value at which the metal insert, in normal conditions of use, is perfectly and strongly anchored to the plastic material.




VCT.p

Code	Description	D	d _{6g}	L	d ₁	l	l ₂	C# [Nm]	
69816-C9	VCT.25 p-M4x6-C9	25	M4	19	13	6	8	5	5
69817-C9	VCT.25 p-M4x10-C9	25	M4	19	13	10	8	5	6



VCT.p

Code	Description	D	d _{6g}	L	d ₁	l	l ₂	C# [Nm]	
69821-C9	VCT.25 p-M5x10-C9	25	M5	19	13	10	8	6	7
69822-C9	VCT.25 p-M5x16-C9	25	M5	19	13	16	8	6	8
69823-C9	VCT.25 p-M5x20-C9	25	M5	19	13	20	8	6	9
69824-C9	VCT.25 p-M5x25-C9	25	M5	19	13	25	8	6	10
69831-C9	VCT.25 p-M6x10-C9	25	M6	19	13	10	8	6	8
69832-C9	VCT.25 p-M6x16-C9	25	M6	19	13	16	8	6	9
69833-C9	VCT.25 p-M6x20-C9	25	M6	19	13	20	8	6	10
69834-C9	VCT.25 p-M6x30-C9	25	M6	19	13	30	8	6	12
69872-*	VCT.32 p-M5x20-*	32	M5	23	15	20	10	6	13
69851-*	VCT.32 p-M6x16-*	32	M6	23	15	16	10	8	13
69852-*	VCT.32 p-M6x20-*	32	M6	23	15	20	10	8	14
69853-*	VCT.32 p-M6x25-*	32	M6	23	15	25	10	8	15
69854-*	VCT.32 p-M6x30-*	32	M6	23	15	30	10	8	16
69856-*	VCT.32 p-M6x40-*	32	M6	23	15	40	10	8	18
69859-*	VCT.32 p-M8x16-*	32	M8	23	15	16	10	8	14
69861-*	VCT.32 p-M8x20-*	32	M8	23	15	20	10	8	18
69863-*	VCT.32 p-M8x30-*	32	M8	23	15	30	10	8	21
69865-*	VCT.32 p-M8x40-*	32	M8	23	15	40	10	8	24
69901-*	VCT.40 p-M6x20-*	40	M6	27	17	20	12	13	18
69902-*	VCT.40 p-M6x25-*	40	M6	27	17	25	12	13	19
69903-*	VCT.40 p-M6x30-*	40	M6	27	17	30	12	13	20
69911-*	VCT.40 p-M8x16-*	40	M8	27	17	16	12	16	23
69912-*	VCT.40 p-M8x20-*	40	M8	27	17	20	12	16	24
69913-*	VCT.40 p-M8x25-*	40	M8	27	17	25	12	16	26
69914-*	VCT.40 p-M8x30-*	40	M8	27	17	30	12	16	27
69915-*	VCT.40 p-M8x35-*	40	M8	27	17	35	12	16	28
69916-*	VCT.40 p-M8x40-*	40	M8	27	17	40	12	16	30
69917-*	VCT.40 p-M8x45-*	40	M8	27	17	45	12	16	32
69919-*	VCT.40 p-M8x55-*	40	M8	27	17	55	12	16	36
69960-*	VCT.50 p-M8x16-*	50	M8	32	19	16	14	16	26
69961-*	VCT.50 p-M8x20-*	50	M8	32	19	20	14	16	28
69962-*	VCT.50 p-M8x25-*	50	M8	32	19	25	14	16	30
69963-*	VCT.50 p-M8x30-*	50	M8	32	19	30	14	16	31
69965-*	VCT.50 p-M8x40-*	50	M8	32	19	40	14	16	33
69967-*	VCT.50 p-M8x50-*	50	M8	32	19	50	14	16	35
69971-*	VCT.50 p-M10x20-*	50	M10	32	19	20	14	23	36
69973-*	VCT.50 p-M10x30-*	50	M10	32	19	30	14	23	41
69975-*	VCT.50 p-M10x40-*	50	M10	32	19	40	14	23	46
69977-*	VCT.50 p-M10x50-*	50	M10	32	19	50	14	23	51
70021-*	VCT.63 p-M10x20-*	63	M10	37	22	20	16	37	54
70023-*	VCT.63 p-M10x30-*	63	M10	37	22	30	16	37	59
70025-*	VCT.63 p-M10x40-*	63	M10	37	22	40	16	37	64
70027-*	VCT.63 p-M10x50-*	63	M10	37	22	50	16	37	69
70029-*	VCT.63 p-M10x60-*	63	M10	37	22	60	16	37	74
70032-*	VCT.63 p-M12x30-*	63	M12	37	22	30	16	46	67
70036-*	VCT.63 p-M12x50-*	63	M12	37	22	50	16	46	79
70083-*	VCT.74 p-M12x30-*	74	M12	43.5	26	30	22	68	86
70085-*	VCT.74 p-M12x50-*	74	M12	43.5	26	50	22	68	98
70087-*	VCT.74 p-M12x70-*	74	M12	43.5	26	70	22	68	110
70095-*	VCT.74 p-M14x50-*	74	M14	43.5	26	50	22	78	106
70099-*	VCT.95 p-M16x50-*	95	M16	46	32	50	21	138	175