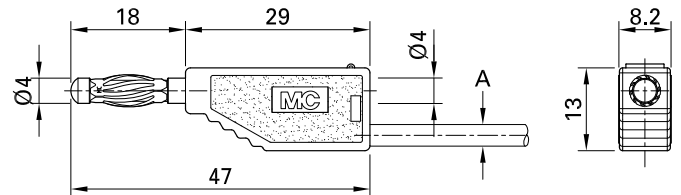
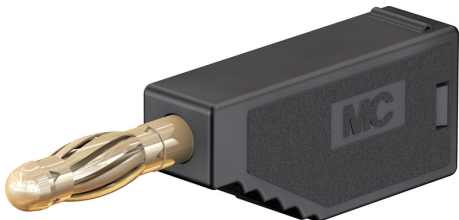


SLS425-A



Item number 22.2631-*

Stackable Ø 4 mm plugs with spring-loaded MULTILAM for self-assembly of test leads. Gold-plated version. Solder connection.

Technical data	
Diameter of plug system	4 mm
Rated Values	30 VAC, 32 A / 60 VDC, 32 A
Surface treatment electrical contact	Au
Base material electrical contact	CuZn
Colours *	20 21 22 23 24 25 26 27 28 29
Test accessory acc. to	IEC EN 61010-031
Component parts	KT425-A; LS410
Material insulating part	PA