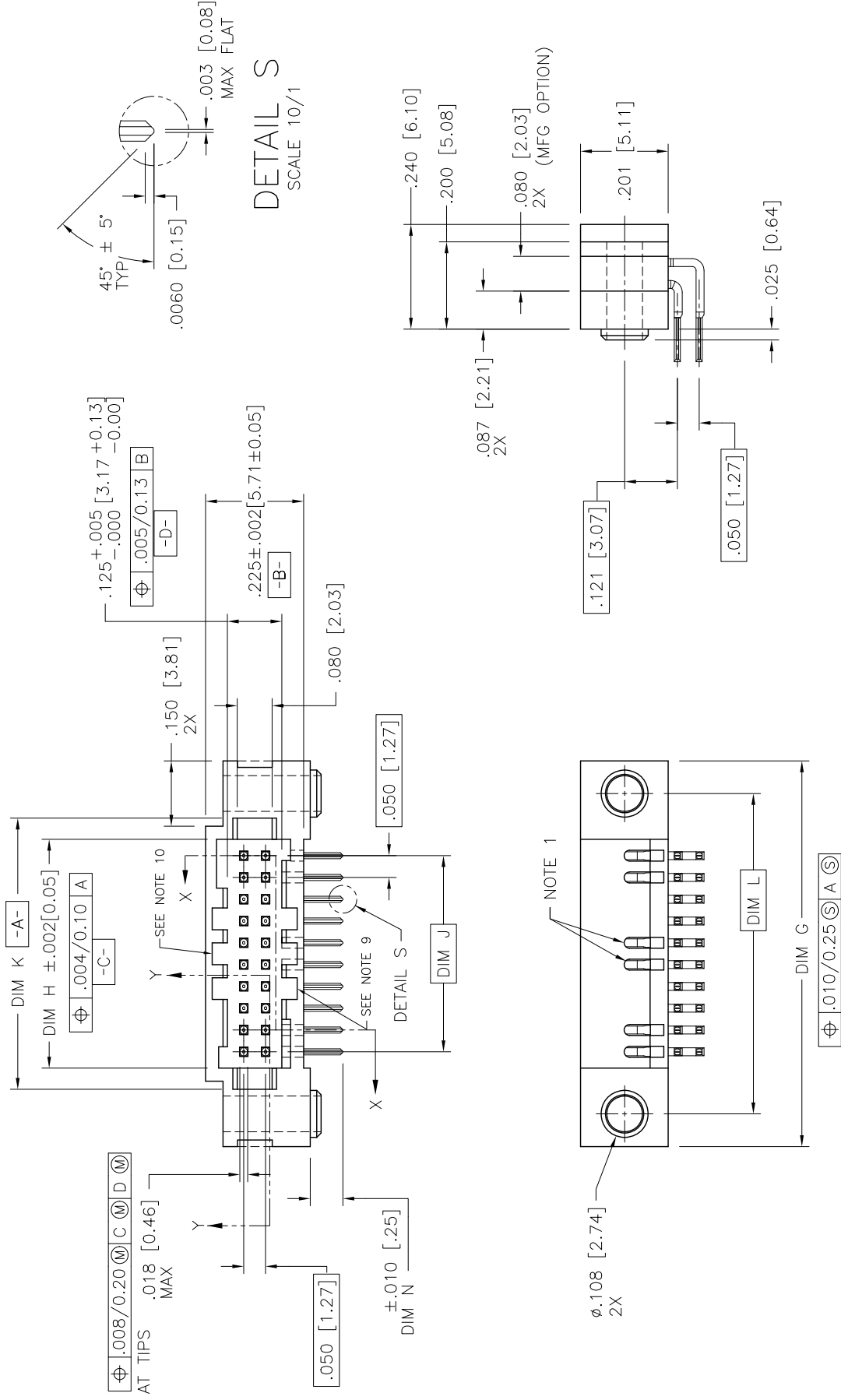


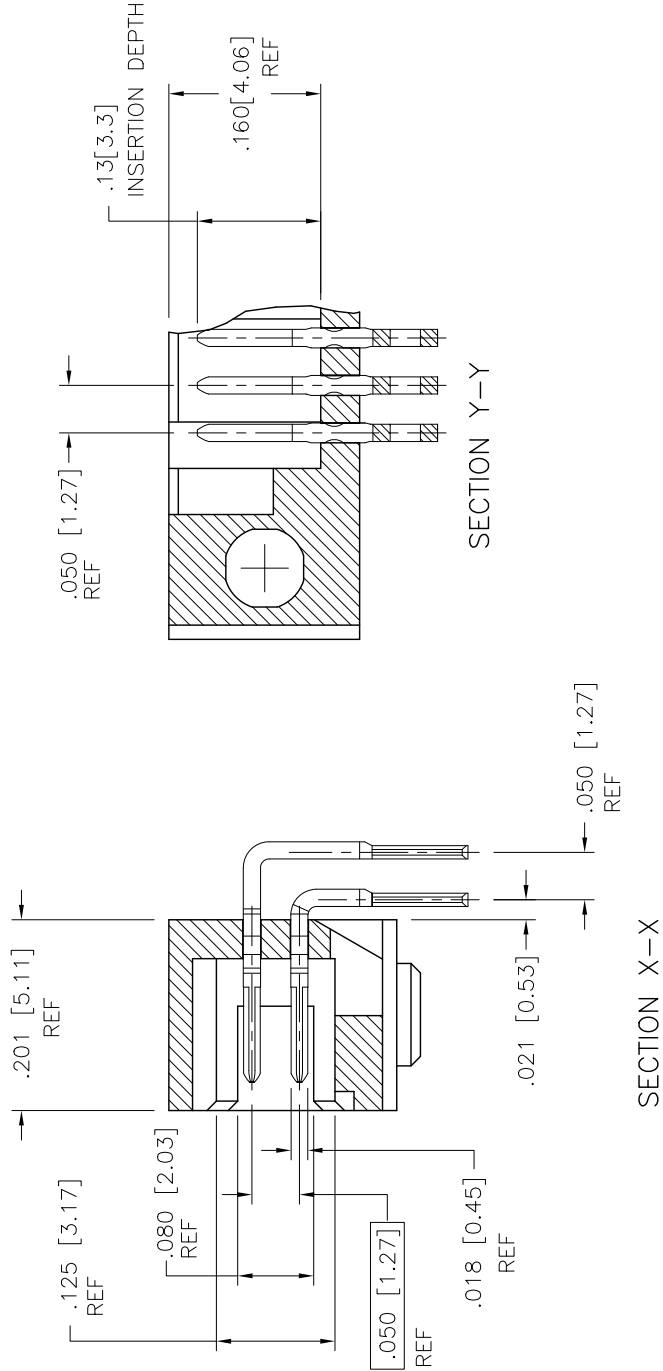
1 2 3 4 5 6

PRODUCT NUMBER
SEE TABLE



mat'l. code		surface		tolerance		projection		product family	
ISO 1302		ISO 406		ISO 1101		RIBCAGE		RIBCAGE	
ISO 1101		tolerances unless otherwise specified		linear		INCH/MM		title	
RIB		.XX±.01/0.3		.XXX±.005/0.13		scale 3:1		RIBCAGE HORIZONTAL HEADER ASSEMBLY	
M05-0123 MHT		6/07/05		M. CORNMAN		6/6/95		dwg no 95780	
M05-0196 MHT		9/13/05		D. WHITING		6/6/95		sheet 1 of 4 size A3	
M06-0225 ERE		06/12/06		D. WHITING		6/6/95		type Product Customer Drawing	
M06-0370 MHT		9/26/06		D. WHITING		6/6/95		FCI	
M09-0058 MHT		4/02/09		sheet		P P P		1 2 3 4	
N10-0122 YO		5/11/10		revision		P P P		1 2 3 4	
ELX-N-00991 YO		1/30/12		sheet		P P P		1 2 3 4	
index		sheet		revision		P P P		1 2 3 4	

PRODUCT NUMBER
SEE TABLE



FConnect.com



Copyright FCI

mat'l. code		surface		tolerance		projection		product family	
—		ISO 1302		ISO 406		1st angle		RIBCAGE	
itr		ecn no		dr		INCH/MM		title	
P				linear		3:1		RIBCAGE HORIZONTAL HEADER ASSEMBLY	
date		angles		.xxx±.01/0.3		scale		sheet 2 of 4 size	
		0 deg?		.xxx±.005/0.13		3:1		95780	
				.xxxx±.0020/0.051				Product Customer Drawing	
		M. CORNMAN		6/6/95					
		D. WHITING		6/6/95					
		D. WHITING		6/6/95					
		appd D. WHITING		6/6/95					
sheet index		revision		sheet		sheet			

form: A3

4 PDS: Rev : P

STATUS: Released

Printed: Feb 17, 2012



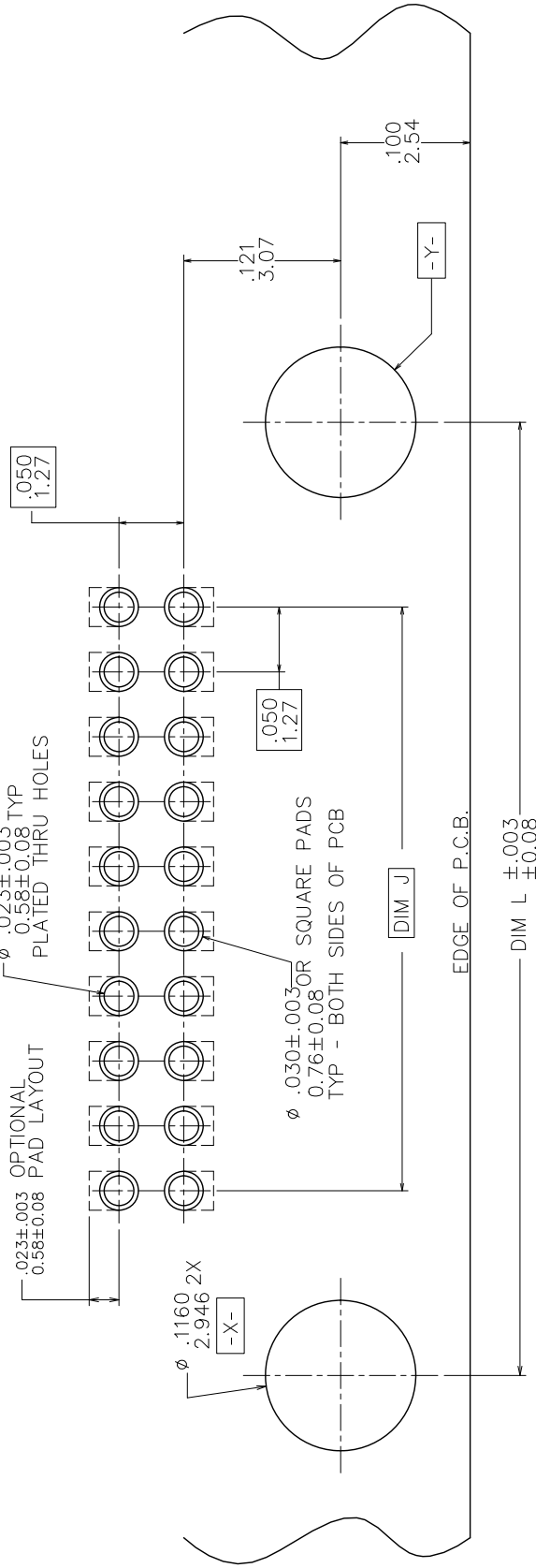
PRODUCT NO. NOTE 5,6	SIZE	DIM G	DIM H	DIM J	DIM K	DIM L	TAIL LENGTH DIM N													
								87402 OR 93120	110	115	120	125	130	135	140	145	150	150N	305	310
	2X5	.635/16.13	.275/6.90	.200/5.08	.380/9.65	.485/12.32	.075/1.90													
	2X10	.885/22.48	.525/13.34	.450/11.43	.630/16.00	.735/18.67														
	2X15	1.135/28.83	.775/19.68	.700/17.78	.880/22.35	.985/25.02														
	2X20	1.385/35.18	1.025/26.03	.950/24.13	1.130/28.70	1.235/31.37														
	2X25	1.635/41.52	1.275/32.38	1.200/30.48	1.380/35.05	1.485/37.72														
	2X30	1.885/47.88	1.525/38.74	1.450/36.83	1.630/41.40	1.735/44.07														
	2X35	2.135/54.23	1.775/45.08	1.700/43.18	1.880/47.75	1.985/50.42														
	2X40	2.385/60.58	2.025/51.43	1.950/49.53	2.130/54.10	2.235/56.77														
	2X45	2.635/66.93	2.275/57.78	2.200/55.88	2.380/60.45	2.485/63.12														
	2X50	2.885/73.28	2.525/64.14	2.450/62.23	2.630/66.80	2.735/69.47	.075/1.90													
	2X50	2.885/73.28	2.525/64.14	2.450/62.23	2.630/66.80	2.735/69.47	.125/3.18													
	2X5	.635/16.13	.275/6.90	.200/5.08	.380/9.65	.485/12.32	.085/2.16													
	2X10	.885/22.48	.525/13.34	.450/11.43	.630/16.00	.735/18.67														
	2X20	1.385/35.18	1.025/26.03	.950/24.133	1.130/28.70	1.235/31.37														
	2X30	1.885/47.88	1.525/38.74	1.450/36.83	1.630/41.40	1.735/44.07														
	2X45	2.635/66.93	2.275/57.78	2.200/55.88	2.380/60.45	2.485/63.12	.085/2.16													
	2X10	.885/22.48	.525/13.34	.450/11.43	.630/16.00	.735/18.67	.125/3.18													
	2X15	1.135/28.83	.775/19.68	.700/17.78	.880/22.35	.985/25.02														
	2X20	1.385/35.18	1.025/26.03	.950/24.13	1.130/28.70	1.235/31.37														
	2X25	1.635/41.52	1.275/32.38	1.200/30.48	1.380/35.05	1.485/37.72														
87402 OR 93120	2X30	1.885/47.88	1.525/38.74	1.450/36.83	1.630/41.40	1.735/44.07	.125/3.18													

mat'l. code		surface		tolerance		projection		product family	
ISO 1302		ISO 406		ISO 1101				RIBCAGE	
P		angles		linear		INCH/MM		title	
		0 deg?		.xxx±.005/0.13		scale 3:1		RIBCAGE HORIZONTAL HEADER ASSEMBLY	
		dr		M. CORNMAN		6/6/95		dwg no 95780	
		engr		D. WHITING		6/6/95		sheet 3 of 4 size A3	
		chr		D. WHITING		6/6/95		type Product Customer Drawing	
sheet		revision							
index		sheet							

1 2 3 4 5 6

A B C D

PRODUCT NUMBER
SEE TABLE



RECOMMENDED P.C.B. LAYOUT
SCALE 20/1

NOTES:

1. HOUSING MATERIAL:
GLASS FILLED THERMOPLASTIC FLAME RETARDANT PER UL 94V-0.
COLOR: NATURAL.
2. TERMINAL PLATING:
30u"/.76u MIN HARD GOLD OR GXT OVER 50u"/1.27uNi ON CONTACT ZONES.
200u"/5.08u MIN Sn OVER 50u"/1.27u Ni IN SOLDERING ZONES.
3. CORING IN CENTER TO BE PRESENT ON PARTS THAT ARE 2X40 OR LARGER.
4. SUGGESTED FASTENERS:
#2 HI-LO THREAD 1/4" PANHEAD.
FASTECH INC.
(516) 242-5699
OR;
#1 CAPHEAD SCREW (3/8" LONG) AND NUT FOR (.062/1.57 BOARD).
#87402 AND 93120 ARE THE SAME. PLEASE ORDER AS 87402.
5. ADD "LF" SUFFIX AT THE END OF PART NUMBER FOR LEAD FREE OPTION.
6. THIS PRODUCT MEETS EUROPEAN UNION DIRECTIVES AND OTHER COUNTRY REGULATION AS DESCRIBED IN GS-22-008.
7. THE HOUSING WILL WITHSTAND EXPOSURE TO 260°C PEAK TEMPERATURE FOR 15 SECONDS IN A WAVE SOLDER APPLICATION WITH A 1.5mm MINIMUM THICK CIRCUIT BOARD. SEE APPLICATION NOTES/PROCEDURES IF THEY ARE AVAILABLE.
8. MOLDING FLOW RESTRICTOR QUANTITY AND LOCATION IS MANUFACTURING OPTION.
9. VACUUM CAP SLOT REQUIRED ON ALL SIZES, SLOT MAY BE LOCATED ON OPPOSITE SIDE FOR 2 X 5.
10. PRODUCT SPEC PER BUS-12-087.

mat'l. code		surface	tolerance	projection	product family
itr	ecn no	ISO 1302	ISO 406	1st angle	title
P		tolerances unless otherwise specified			RIBCAGE
	date	angles	.xxx±.01/0.3	INCH/MM	RIBCAGE HORIZONTAL HEADER ASSEMBLY
		0deg?	.xxx±.005/0.13	scale 3:1	dwg no 95780
		linear	.xxx±.020/0.051		sheet 4 of 4 size A3
		dr	M. CORNMAN		Product Customer Drawing
		engr	D. WHITING		
		chr	D. WHITING		
		appd	D. WHITING		
sheet index	revision sheet				