

thermoplastic / metal

Identification Part number Drawing Dimensions in mm

Hoods

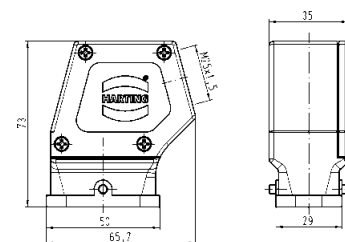
Hoods

Metal
side-entry
Cable gland order separately



19 12 008 0526

M 25



Han

Hoods

Metal
side-entry
Cable gland order separately



black
chromated
19 12 008 0501

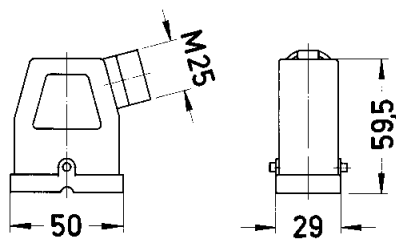
M 25

black
powder coated
19 12 708 0501

M 25

matt
nickel plated
19 12 008 0502

M 25



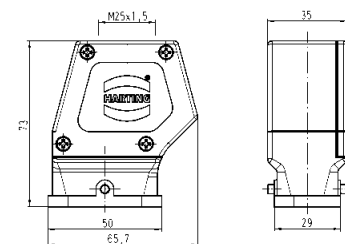
Hoods

Metal
top-entry
Cable gland order separately



19 12 008 0426

M 25



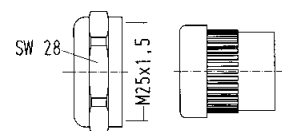
Cable seal

Metal
for hoods
Thrust bolt and insert



19 12 000 5057
19 12 000 5058

M 25
M 25



	cable	
	min.	max.
19 12 000 5057	10.5 mm	14 mm
19 12 000 5058	14 mm	17 mm

Identification Part number Drawing Dimensions in mm
for male insert for female insert

Protection covers

Thermoplastic
for male insert



without sealing
09 12 008 5407

with sealing
09 12 008 5408

