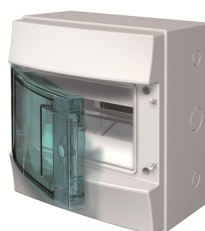


PRODUCT-DETAILS

65P08X12

65P08X12 Consumer Unit (empty)



General Information

Extended Product Type	65P08X12
Product ID	1SL1201A00
ABB Type Designation	Mistral65
EAN	8000126097924
Catalog Description	65P08X12 Consumer Unit (empty)
Long Description	MISTRAL65 transparent door 8 DIN modules GWT 650°C

Technical

Power Loss	20 W
Number of Line Terminals	0
Number of Rows	1
Cover Plate Type	Door
Mounting Type	Surface mounted (plaster)
Door Type	Single
Enclosure Material	thermoplastic
Housing Material	Plastic
Transparent Door	Yes
Cover Style	with Notch
DIN Place Units	8
RAL Number	RAL 7035 - Light Grey
Color	grey

Environmental

Degree of Protection	IP65
Protection Class	Isolated
Environmental Information	1SLC801013D0201

Dimensions

Width in Number of Modular Spacings	8
Product Net Width	232.000 mm
Product Net Height	155.000 mm
Product Net Depth / Length	250.000 mm
Product Net Weight	1.07 kg

Container Information

Package Level 1 Units	box 11 piece
Package Level 1 Width	400 mm
Package Level 1 Height	525 mm
Package Level 1 Depth / Length	600 mm
Package Level 1 Gross Weight	12.82 kg
Package Level 1 EAN	8000126097931

Ordering

Minimum Order Quantity	1 piece
Customs Tariff Number	85371098
Country of Origin	Italy (IT)

Certificates and Declarations (Document Number)

Declaration of Conformity - CE	No declaration needed
Environmental Information	1SLC801013D0201
Instructions and Manuals	No document needed
RoHS Information	1SLT00003R2E0

Popular Downloads

Data Sheet, Technical Information	1SLC801013D0201
Instructions and Manuals	No document needed

Classifications

ETIM 7	EC000214 - Small distribution board
ETIM 8	EC000214 - Small distribution board
WEEE Category	Product Not in WEEE Scope

Object Classification
Code

U

Categories

Low Voltage Products and Systems → Enclosures → Consumer Units → Consumer Units → MISTRAL65

