

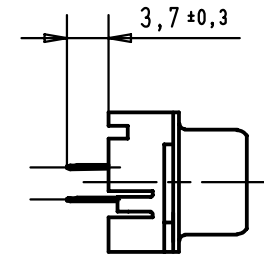
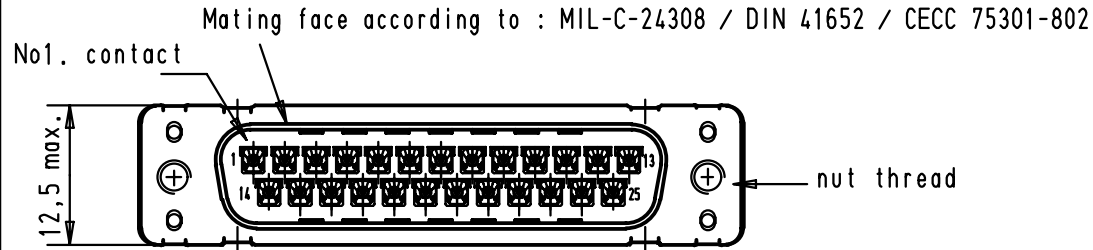
5

4

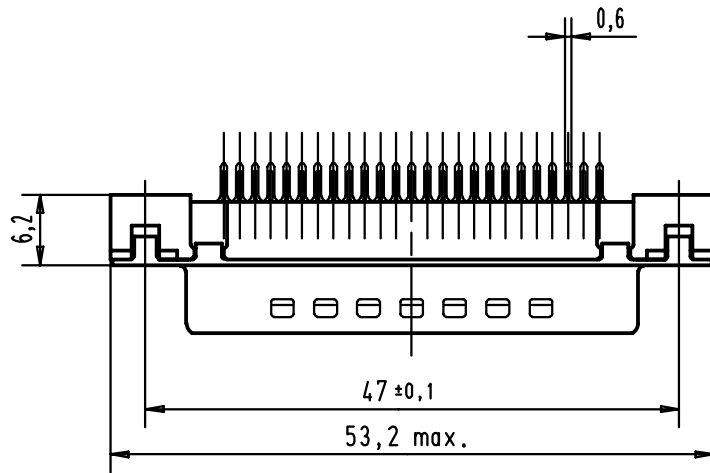
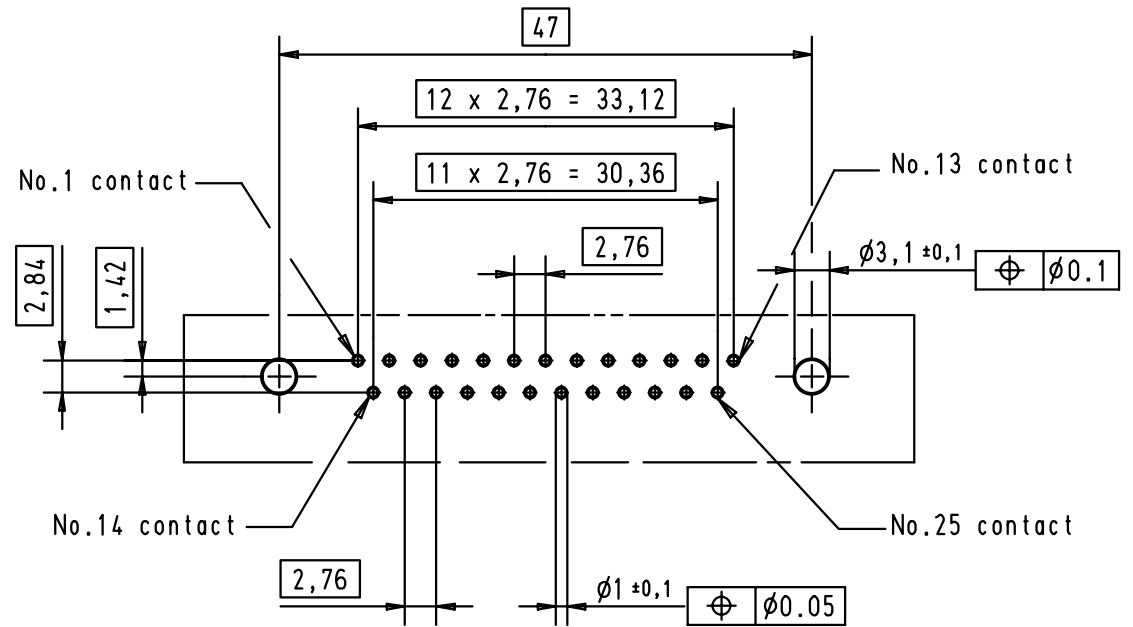
3

2

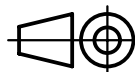

1



Printed board layout component side



A

09 65 321 6701	M3	2								 <p>All Dim. in mm Orig. Size DIN A 4</p>	D-Sub, 25 poles, male, straight, with solder pins 3.7 and nuts.	Maßstab/ Scale 1.5:1
09 65 321 7701	M3	3										
09 65 321 5701	M3	0,76 µm Au										
09 65 321 6702	4-40 UNC	2										
09 65 321 7702	4-40 UNC	3										
09 65 321 5702	4-40 UNC	0,76 µm Au	29723	05/03/02	CV							
Part number	Nut thread	Performance level	Mod.	Dat.	Name	HARTING EURL F-95972 Paris				TB 09 65 321 x70x Sub.	Blatt/ Page 2	