

PRODUCT NUMBER  
77311-YYX-XXLF

ROHS COMPATIBLE  
SEE NOTE 6

TOTAL NB OF POSITIONS 01 TO 36

OPTION LETTER SEE SHEET 2

PRODUCT NUMBER (BERGSTRIIP PACKAGING)  
77311-YYX-00LF

INDICATES THE PRODUCT IS ROHS  
COMPATIBLE. SEE NOTE 6  
POSITIONS PER REEL : 00=36,000 (BERGSTRIIP)

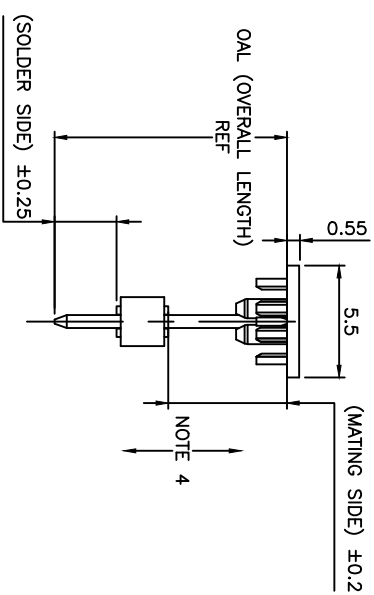
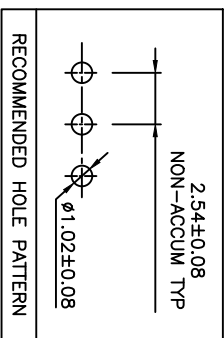
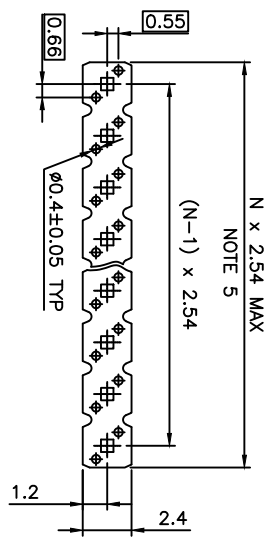
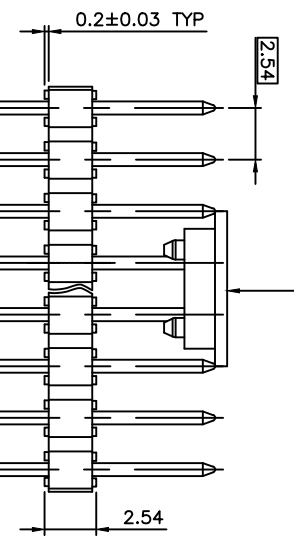
| PIN STYLE | MATING SOLDER | OAL  |
|-----------|---------------|------|
| 01        | 5.84          | 2.41 |
| 02        | 5.84          | 3.42 |
| 18        | 5.84          | 3.05 |
| 22        | 7.75          | 3.05 |
| 24        | 6.75          | 2.9  |
| 27        | 6.6           | 2.66 |

1= 0.76um GOLD/GXT ON CONTACT AREA, 2um TIN MIN ON TAILS

8= 0.38um GOLD/GXT ON CONTACT AREA, 2um TIN MIN ON TAILS

4= 2.0um TIN MIN FULL PLATED

1.27um NICKEL MIN UNDERLAYER FOR ALL PLATING VERSIONS

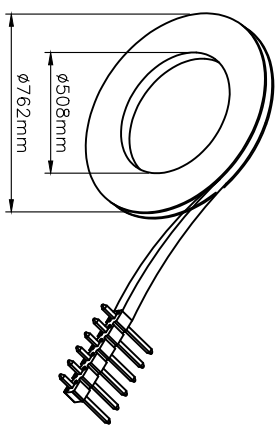


NOTES:

- HOUSING MAT'L : HIGH TEMPERATURE THERMOPLASTIC. UL94V-0 COLOR: BLACK
- PIN MATERIAL : PHOSPHOR BRONZE
- BERGSTRIIP PRODUCT PACKAGED IN POLYBAGS. BERGSTRIIP PRODUCT PACKAGED PER REELS.
- 9N MIN RETENTION IN EITHER DIRECTION
- TO DETERMINE DIMENSIONS :  
N = NUMBER OF POSITIONS PER ROW  
EXAMPLE : 8 POS N x 2.54 = 20.32mm
- ROHS COMPATIBLE PRODUCT SPECIFICATIONS

d - PLATING:

- "L-F" MEANS THE PRODUCT IS LEAD-FREE, 2um MINIMUM MATTE TIN OVER 1.27um MINIMUM NICKEL UNDERPLATE.
- MANUFACTURING PROCESS COMPATIBILITY  
THE HOUSING WILL WITHSTAND EXPOSURE TO 260°C ±5°C SOLDER BATH TEMPERATURE FOR 5 SECONDS IN A WAVE SOLDER APPLICATION WITH A 1.6mm MIN THICK CIRCUIT BOARD.
- REFLOW COMPATIBLE
- LABELING:  
MEETS PACKAGING SPECS AS PER GS-14-920
- LEGAL STATEMENT: SEE GS-47-0004



BERGSTRIIP HEADER REEL PACKAGING DIMENSIONS

| mat'l. code             | surface                               | tolerance         | projection | product family |
|-------------------------|---------------------------------------|-------------------|------------|----------------|
| SEE NOTES               | ISO 1302                              | ISO 406 ISO 1001  | mm         | BERGSTRIIP     |
| thr ecn no dr dtc date  | tolerances unless otherwise specified | X ±0.3            | mm         | UNSHR.HEADER   |
| CW F-38159 DDE 20.08.26 | angles                                | .xx ±0.15         | mm         | STR SR TMT     |
| CX F-39392 DDE 20.12.18 | linear                                | .xxx ±0.05        | Scale 5:1  |                |
| CY F-39850 DDE 22.01.13 |                                       |                   |            |                |
| dr                      | D.I.E                                 | 01.01.24          |            |                |
| enqr                    | J.M.C                                 | 01.01.24          |            |                |
| chr                     | J.M.C                                 | 01.01.24          |            |                |
| JF:N                    |                                       | 01.01.24          |            |                |
| sheet revision          | CY CA N                               |                   |            |                |
| index sheet             | 1 2 3                                 |                   |            |                |
| dwg no                  | 77311                                 | sheet 1 of 3 size |            |                |
| type                    | CUSTOMER                              | Drawing           |            |                |
|                         |                                       | A3                |            |                |

OPTIONS : - = POLYBAG PACKAGING

- K = TAPE & REEL PACKAGING, WITHOUT PICK UP CAP ONLY FOR P/N 77311-462K04(LF) AND 77311-462K05(LF)
  - A = TAPE & REEL PACKAGING, WITH PICK UP CAP. AS AVAILABLE
  - KC = TAPE & REEL PACKAGING WITHOUT PICK UP CAP AND WITH HIGH RETENTION FEATURES
  - KV = TAPE & REEL PACKAGING WITHOUT PICK UP CAP FOR CUSTOMER DEDICATED PART ONLY FOR P/N 77311-462KV04LF
  - AV = TAPE & REEL PACKAGING WITH PICK UP CAP FOR CUSTOMER DEDICATED PART
  - C = HIGH RETENTION FEATURES, SEE SHEET 2
  - V = BIBOX PACKAGING FOR CUSTOMER DEDICATED PART. ONLY FOR 77311-4BNV01LF
  - R = RETENTION FEATURES, SEE BELOW
- IF RETENTION FEATURE "R" AND TUBE PACKAGING "T" ARE BOTH REQUIRED  
OPTIONAL LETTER "R" WILL APPEAR INSTEAD OF THE FIRST DASH  
EXAMPLE : 77311R424T03LF

RETENTION FEATURES :

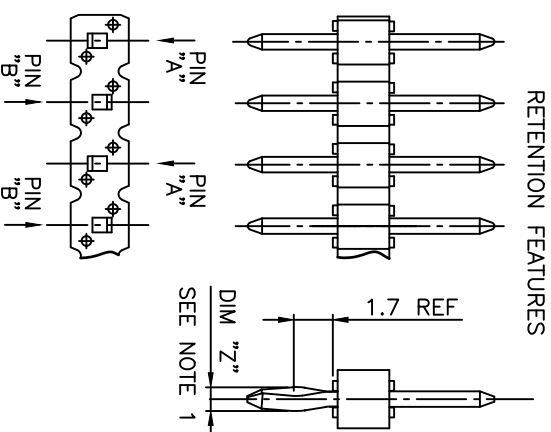
- 1 - PART NUMBER 77311-XXXXXXLF: DIM "Z"=(0.99)  
PART NUMBER 77311-XXXXXXLF: DIM "Z"= 1.05MIN -1.15MAX
- 2 - PINS "A" AND "B" USED FOR RETENTION.
- 3 - DIRECTION OF RETENTION SHOWN BY ARROWS.
- 4 - ON 4 TO 36 POSITIONS HEADER, RETENTION IS IN MID POSITION OF HEADER (4 CENTRAL PINS)
- 5 - FOR RETENTION OPTION , SOLDER TAIL LENGTH TO BE 2.9 MIN UP TO 3.5 MAX.
- 6 - HOUSING MATERIAL FOR P/N 77311-4AUC03LF & 77311-TAUC03LF HIGH TEMPERATURE THERMOPLASTIC UL94V-0 COLOR : NATURAL

PLATING SPECIFICATIONS :

- 7 - ONLY FOR PLATING 1XX, 8.0MM GOLD / GXT PLATING AREA FROM PIN TYPE ON MATING SIDE

PLATING :

- 1 = 0.76µm GOLD/GXT ON CONTACT AREA, 2µm TIN MIN ON TAIL
- 4 = 2µm TIN MIN FULL PLATED
- 5 = 0.25µm GOLD/GXT ON CONTACT AREA, 2µm TIN MIN ON TAIL ONLY AVAILABLE UPON REQUEST
- 8 = 0.38µm GOLD/GXT ON CONTACT AREA, 2µm TIN MIN ON TAIL
- G = 0.76µm FULL GXT
- S = 0.38µm FULL GXT
- T = 2µm TIN MIN FULL PLATED INCLUDED FOR ALL PLATING VERSIONS
- 1.27µm NICKEL MIN UNDERLAYER FOR ALL PLATING VERSIONS



| mat'l. code | surface        | tolerance | projection | product family |
|-------------|----------------|-----------|------------|----------------|
| ltr         | ecn no         | dr        | date       | ISO 1302       |
| BU          | B-20596        | AMA       | 15.03.30   | ISO 406        |
| BV          | F-22085        | LMU       | 15.10.05   | ISO 1101       |
| BW          | F-22100        | AMA       | 15.10.08   | ISO 1101       |
| BX          | F-26241        | LMU       | 17.03.01   | ISO 1101       |
| BY          | F-39392        | DDE       | 20.12.18   | ISO 1101       |
| CA          | F-39850        | DDE       | 23.01.13   | ISO 1101       |
| sheet index | revision sheet |           |            |                |
|             |                |           |            |                |
|             |                |           |            |                |
|             |                |           |            |                |
|             |                |           |            |                |

| tolerance | ISO 1302 | ISO 406 | ISO 1101 | tolerance unless otherwise specified |
|-----------|----------|---------|----------|--------------------------------------|
| √         |          |         |          |                                      |
|           |          |         |          |                                      |
|           |          |         |          |                                      |
|           |          |         |          |                                      |
|           |          |         |          |                                      |
|           |          |         |          |                                      |

| angles | linear | mm | scale |
|--------|--------|----|-------|
|        |        |    |       |
|        |        |    |       |
|        |        |    |       |
|        |        |    |       |
|        |        |    |       |

| title        | product family |
|--------------|----------------|
| UNSHR.HEADER | BERGSTIK       |
| STR SR TMT   |                |
|              |                |
|              |                |
|              |                |
|              |                |
|              |                |
|              |                |

| dwg no   | sheet 2 of 3 | size |
|----------|--------------|------|
| 77311    |              | A3   |
| CUSTOMER | Drawing      |      |

PRODUCTS SPECIFICATIONS

| PIN STYLE | MATING | SOLDER | OAL   |
|-----------|--------|--------|-------|
| 01        | 5.84   | 2.41   | 10.8  |
| 02        | 5.84   | 3.42   | 11.8  |
| 03        | 5.72   | 5.09   | 13.35 |
| 05        | 5.72   | 10.14  | 18.4  |
| 08        | 5.72   | 17.78  | 26.04 |
| 11        | 5.72   | 5.94   | 14.20 |
| 15        | 8.51   | 2.55   | 13.6  |
| 18        | 5.84   | 3.05   | 11.43 |
| 19        | 12.83  | 3.03   | 18.4  |
| 20        | 15.37  | 3.04   | 20.95 |
| 22        | 7.75   | 3.05   | 13.35 |
| 24        | 6.75   | 2.9    | 12.2  |
| 25        | 8.51   | 3.18   | 14.22 |
| 27        | 6.6    | 2.65   | 11.8  |
| 26        | 15.57  | 2.84   | 20.95 |
| 29        | 17.5   | 3.46   | 23.5  |
| 32        | 10.3   | 3.05   | 15.9  |
| 38        | 5.84   | 3.82   | 12.2  |
| 39        | 11.2   | 3.05   | 16.8  |
| 46        | 8.08   | 2.98   | 13.6  |
| 54        | 8.08   | 3.81   | 14.43 |
| 58        | 14.47  | 3.05   | 20.06 |
| 62        | 13.5   | 3.05   | 19.09 |
| 70        | 6.54   | 3.50   | 12.57 |
| 83        | 20.46  | 3.00   | 26.00 |
| 85        | 5.72   | 8.51   | 16.76 |
| 87        | 6.98   | 3.05   | 12.57 |
| 91        | 5.6    | 10.21  | 18.35 |
| 92        | 5.65   | 12.76  | 20.95 |
| 93        | 6.00   | 4.81   | 13.35 |
| 94        | 15.60  | 3.20   | 21.25 |
| 95        | 10.00  | 8.45   | 20.95 |
| 96        | 10.95  | 3.05   | 16.55 |
| 97        | 9.00   | 3.55   | 15.09 |
| 98        | 3.00   | 1.35   | 6.84  |
| 99        | 24.00  | 3.05   | 29.50 |
| AA        | 5.72   | 15.24  | 23.50 |
| AB        |        | N/A/08 | 2.79  |

PRODUCTS SPECIFICATIONS

| PIN STYLE | MATING | SOLDER | OAL   |
|-----------|--------|--------|-------|
| AC        | 7.21   | 3.05   | 12.80 |
| AD        | 17.53  | 3.43   | 23.50 |
| AE        | 4.99   | 2.80   | 10.33 |
| AF        | 5.72   | 3.05   | 11.30 |
| AG        | 5.84   | 4.95   | 13.33 |
| AH        | 14.31  | 3.20   | 20.05 |
| AJ        | 8.90   | 3.40   | 14.85 |
| AK        | 25.06  | 3.00   | 30.80 |
| AL        | 3.30   | 3.30   | 9.14  |
| AM        | 9.26   | 3.05   | 14.85 |
| AN        | 7.60   | 4.40   | 14.47 |
| AP        | 7.80   | 3.30   | 13.60 |
| AR        | 18.86  | 2.41   | 23.81 |
| AS        | 11.91  | 1.45   | 15.90 |
| AT        | 4.60   | 4.60   | 11.61 |
| AU        | 12.10  | 3.10   | 17.70 |
| AV        | 6.30   | 6.30   | 15.10 |
| AW        | 9.16   | 1.80   | 13.50 |
| AX        | 5.08   | 2.43   | 10.05 |
| AY        | 7.49   | 3.47   | 13.50 |
| BA        | 8.08   | 2.75   | 13.37 |
| BB        | 10.80  | 2.15   | 15.50 |
| BC        | 8.08   | 3.81   | 14.43 |
| BD        | 10.10  | 2.16   | 14.80 |
| BE        | 13.65  | 2.41   | 18.60 |
| BF        | 2.54   | 5.32   | 10.40 |
| BG        | 4.98   | 1.85   | 9.23  |
| BH        | 4.69   | 2.41   | 9.50  |
| BJ        | 7.21   | 6.15   | 15.90 |
| BK        | 6.86   | 2.65   | 12.05 |
| BL        | 17.70  | 3.25   | 23.50 |
| BM        | 10.96  | 3.70   | 16.20 |
| BN        | 19.46  | 3.00   | 25.00 |
| BP        | 8.80   | 3.20   | 14.50 |
| BR        | 19.46  | 4.00   | 26.00 |
| BS        | 5.72   | 11.05  | 19.30 |
| BT        | 8.50   | 5.36   | 16.40 |
| BU        | 3.80   | 3.80   | 10.14 |
| BV        | 5.08   | 2.79   | 10.40 |
| BW        | 7.36   | 2.30   | 12.20 |

NOTE 6

PRODUCTS SPECIFICATIONS

| PIN STYLE | MATING | SOLDER | OAL   |
|-----------|--------|--------|-------|
| BX        | 2.67   | 3.43   | 8.60  |
| BY        | 11.90  | 3.05   | 17.50 |
| CA        | 7.50   | 6.00   | 16.04 |
| CB        | 16.50  | 2.60   | 21.64 |
| CC        | 4.00   | 2.95   | 9.50  |

|             |          |                  |            |                |
|-------------|----------|------------------|------------|----------------|
| mat'l. code | surface  | tolerance        | projection | product family |
|             | ISO 1302 | ISO 406 ISO 1101 |            | BERGSTIK       |

UNSHR.HEADER

STR SR TMT

77311

CUSTOMER

Drawing

|             |          |       |          |        |        |       |     |        |              |      |
|-------------|----------|-------|----------|--------|--------|-------|-----|--------|--------------|------|
| ltr         | ecn no   | dr    | date     | angles | linear | scale | N/A | dwg no | sheet 3 of 3 | size |
|             |          |       |          |        |        |       |     | 77311  |              | A3   |
| K           | F-33636  | LMU   | 19.05.22 |        |        |       |     |        |              |      |
| L           | F-35304  | LMU   | 19.11.04 | dr     | AMA    |       |     |        |              |      |
| M           | F-38159  | DDE   | 20.08.26 | engr   | LMU    |       |     |        |              |      |
| N           | F-39850  | DDE   | 23.01.13 | chr    | J.CO   |       |     |        |              |      |
|             |          |       |          |        | A.SO   |       |     |        |              |      |
| sheet index | revision | sheet |          |        |        |       |     |        |              |      |