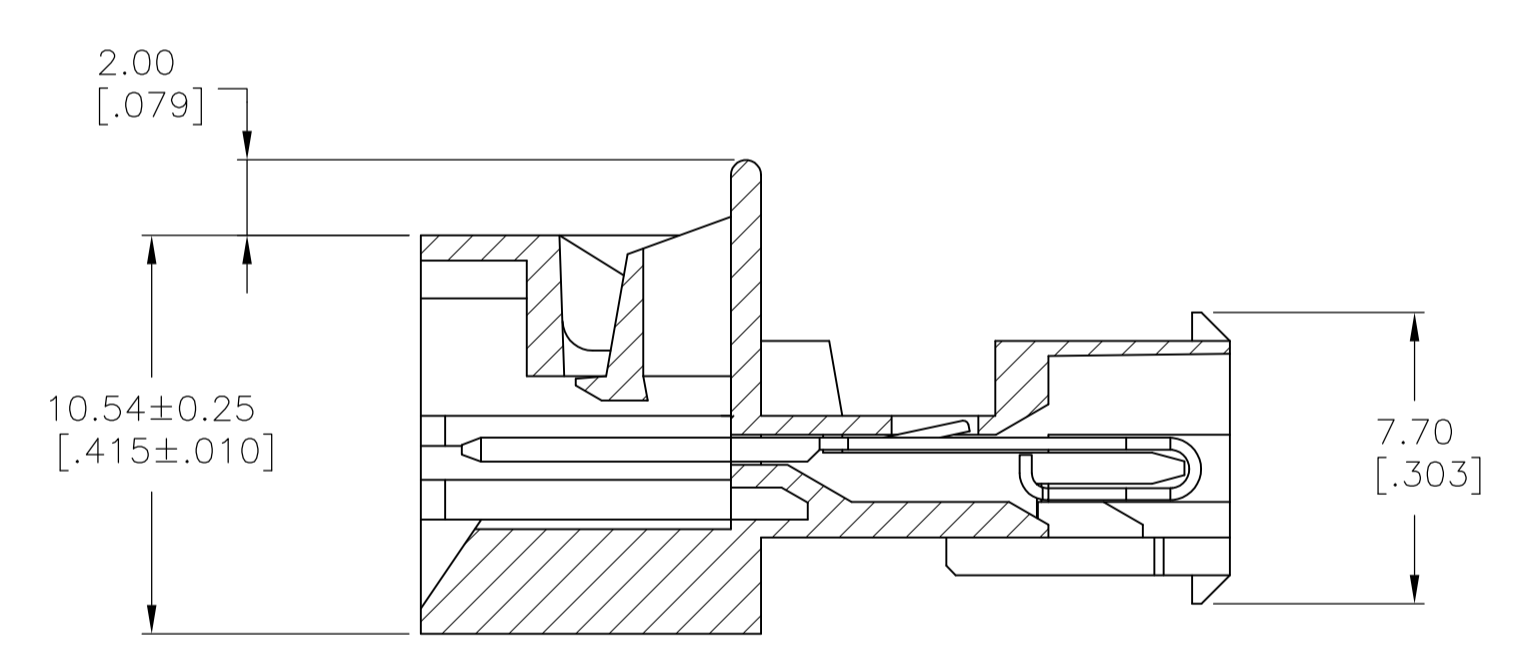
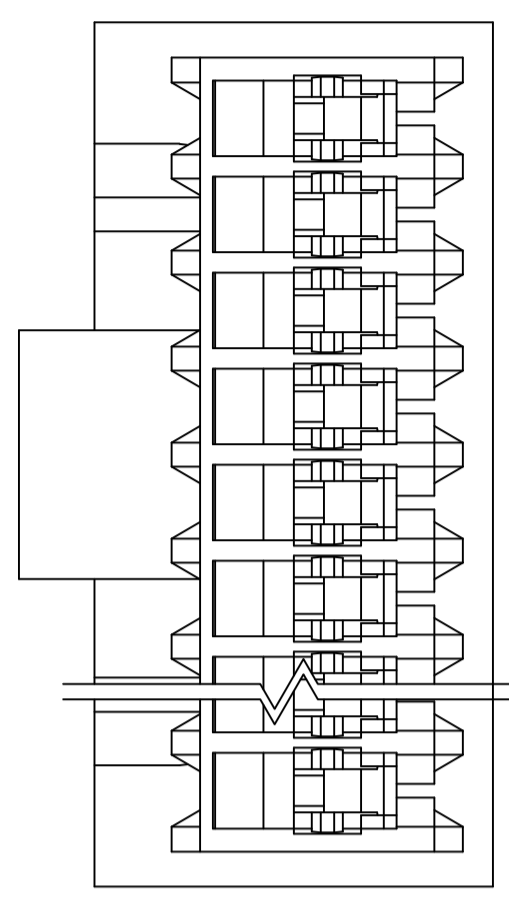
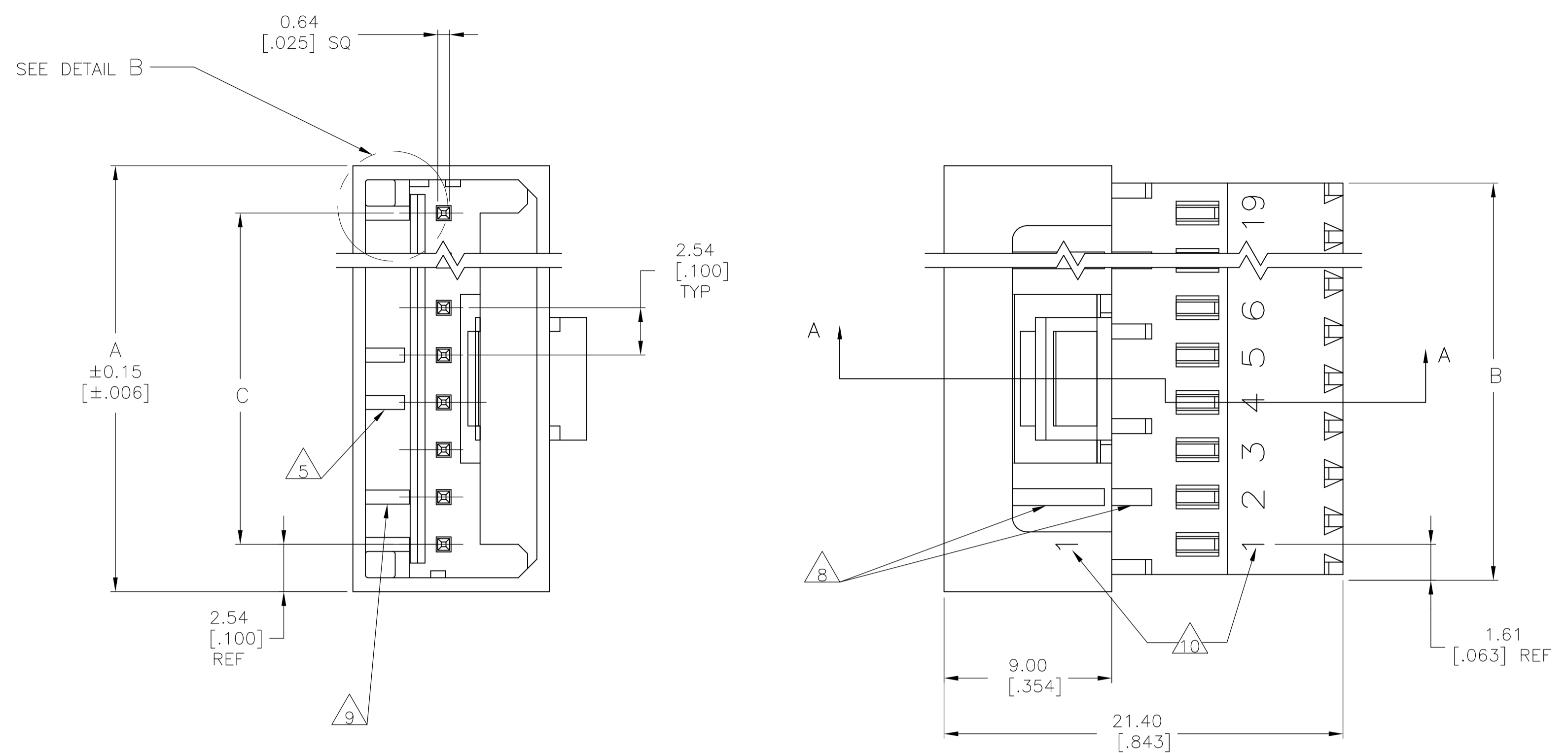
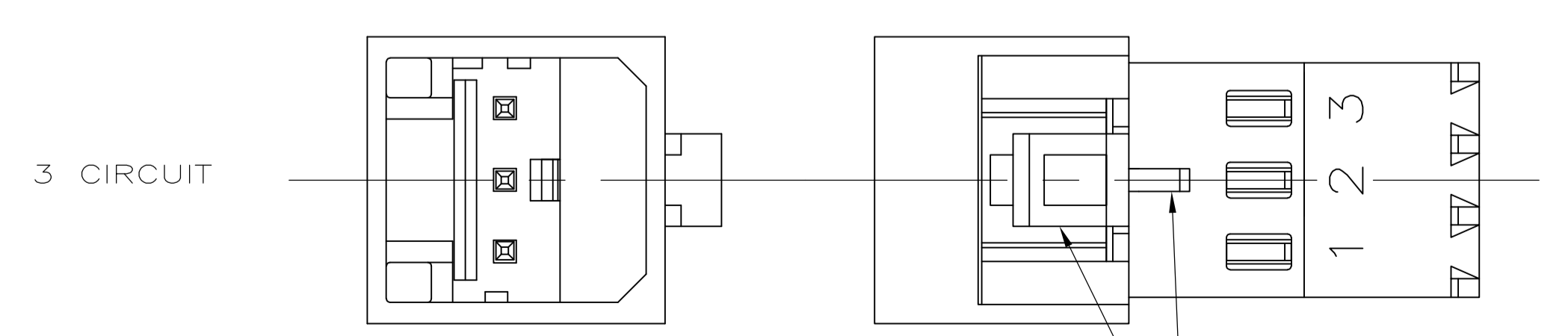
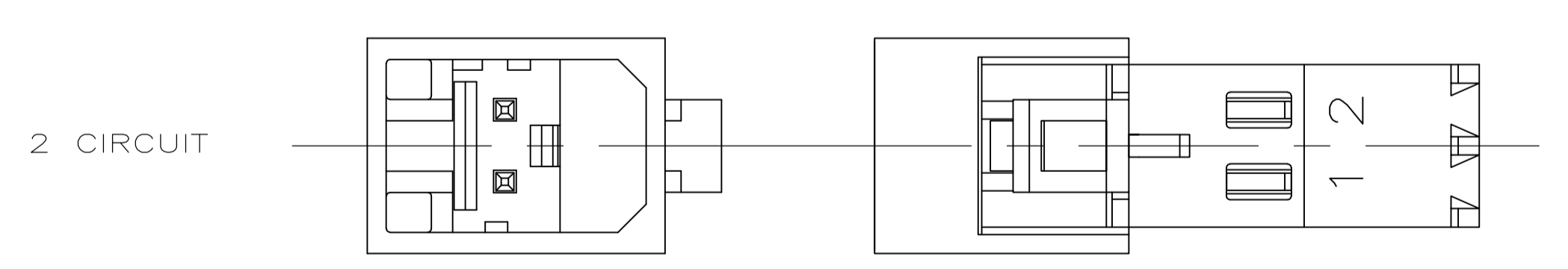


LOC		DIST		REVISIONS			
CM	00	REV	DATE	BY	CHK	APPV	
		D1	02JUN08	HMR	DB		
		D2	05OCT09	KK	AEG		



SECTION A-A

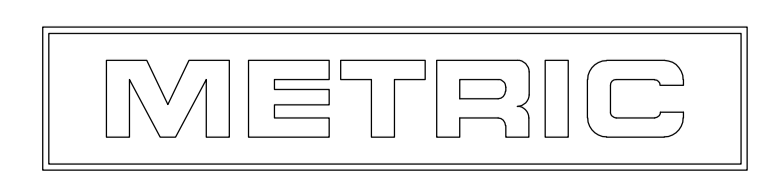


DETAIL A 3

DETAIL B
 SCALE 10:1
 ALTERNATE CONFIGURATION

- 1 MATERIAL:
 HOUSING- NYLON UL94V-2 (BLUE).
 CONTACTS- 0.30 [.012] THK COPPER ALLOY
 PLATING : BRIGHT TIN-LEAD FOR 0.00203[.000080] MIN THK FOR 647002-2 THRU 1-647002-9 OR MATTE TIN 0.00203[.000080] MIN THK. FOR 3-647002-2 THRU 4-647002-9;
- 2 CONTACTS ACCEPT 26 AWG (0.12 - 0.15 mm²) TIN PLATED SOLID, CONCENTRIC FUSED STRANDED, OR CONCENTRIC STRANDED (7 STRANDS) WIRE WITH 1.52 [.060] MAX INSULATION DIAMETER.
- 3 MATES WITH STANDARD MTA-100 CONNECTORS: OF THE SAME CIRCUIT SIZES WITH SIMILARLY PLATED CONTACTS WITH POLARIZING TABS-CIRCUIT SIZES 4-19 ONLY WITHOUT POLARIZING TABS-CIRCUIT SIZES 2 & 3.

 DOES NOT MATE WITH MTA-100 CONNECTORS: WITH POLARIZING TABS-CIRCUIT SIZES 2 & 3 ONLY. (SEE DETAIL A) WITH BLOCKED CIRCUITS -ALL CIRCUIT SIZES. NOT RECOMMENDED FOR MATING WITH MTA-100 CONNECTOR WITHOUT POLARIZING TABS. CIRCUIT SIZES 4-19.
- 4 ACCESSORIES:
 REPLACEMENT IDC CONTACTS: 647032-1.
 COVERS: SEE TABLE
- 5 QUANTITY OF CENTRALLY POSITIONED RAILS VARIES WITH CIRCUIT SIZE. (SEE TABLE) LOCATION MAY DIFFER FROM EXAMPLE SHOWN.
- 6 DIMENSIONS IN BRACKETS ARE IN INCHES.
- 7 SIMILAR SIZED LOCK AND SINGLE TAB USED OR CIRCUITS 4 & 5.
- 8 QUANTITY OF GUSSET RIBS VARIES WITH CIRCUIT SIZE (SEE TABLE). LOCATION MAY DIFFER FROM EXAMPLE SHOWN.
- 9 INNER END RAIL PAIR NOT PRESENT FOR CIRCUIT SIZES 2 OR 3.
- 10 CIRCUIT ID MAY APPEAR FULLY NUMBERED OR SHOWING LOCATION 1 ONLY DEPENDING ON CIRCUIT SIZE.
- 11 OBSOLETE PARTS: OBSOLETE CIS STREAMLINING PER D.RENAUD/D.SINISI



THIS DRAWING IS A CONTROLLED DOCUMENT.		DIN R LEWIS 29--98	Tyco Electronics Corporation Harrisburg, Pa 17105-3608
DIMENSIONS: mm [INCHES]		CHK R SWING 29--98	
TOLERANCES UNLESS OTHERWISE SPECIFIED:		APVD J. ELLIS 29--98	NAME MTA-100 POSTED CONNECTOR ASSEMBLY, CLOSED END, 26 AWG
0 PLC ± -		APPLICATION SPEC	SIZE CAGE CODE DRAWING NO
1 PLC ± -			RESTRICTED TO
2 PLC ± 0.20 [.007]			A1 00779 C=647002
3 PLC ± -			WEIGHT
4 PLC ± -			CUSTOMER DRAWING
ANGLES ± -			SCALE 5:1 SHEET 1 OF 2 REV D2

1-640642-9	1-643077-9	4	2	45.72	1.800	48.95	1.927	50.80	2.000	19	4-647002-9
1-640642-8	1-643077-8	4	2	43.18	1.700	46.41	1.827	48.26	1.900	18	4-647002-8
1-640642-7	1-643077-7	4	2	40.64	1.600	43.86	1.727	45.72	1.800	17	4-647002-7
1-640642-6	1-643077-6	4	2	38.10	1.500	41.32	1.627	43.18	1.700	16	4-647002-6
1-640642-5	1-643077-5	4	2	35.56	1.400	38.78	1.527	40.64	1.600	15	4-647002-5
1-640642-4	1-643077-4	4	2	33.02	1.300	36.24	1.427	38.10	1.500	14	4-647002-4
1-640642-3	1-643077-3	4	2	30.48	1.200	33.70	1.327	35.56	1.400	13	4-647002-3
1-640642-2	1-643077-2	2	1	27.94	1.100	31.16	1.227	33.02	1.300	12	4-647002-2
1-640642-1	1-643077-1	2	1	25.40	1.000	28.62	1.127	30.48	1.200	11	4-647002-1
1-640642-0	1-643077-0	2	1	22.86	.900	26.08	1.027	27.94	1.100	10	4-647002-0
640642-9	643077-9	2	1	20.32	.800	23.54	.927	25.40	1.000	9	3-647002-9
640642-8	643077-8	2	0	17.78	.700	21.00	.827	22.86	.900	8	3-647002-8
640642-7	643077-7	0	0	15.24	.600	18.46	.727	20.32	.800	7	3-647002-7
640642-6	643077-6	0	0	12.70	.500	15.92	.627	17.78	.700	6	3-647002-6
640642-5	643077-5	0	0	10.16	.400	13.38	.527	15.24	.600	5	3-647002-5
640642-4	643077-4	0	0	7.62	.300	10.84	.427	12.70	.500	4	3-647002-4
640642-3	643077-3	0	0	5.08	.200	8.30	.327	10.16	.400	3	3-647002-3
-	643077-2	0	0	2.54	.100	5.76	.227	7.62	.300	2	3-647002-2
1-640642-9	1-643077-9	4	2	45.72	1.800	48.95	1.927	50.80	2.000	19	4-647002-9
1-640642-8	1-643077-8	4	2	43.18	1.700	46.41	1.827	48.26	1.900	18	4-647002-8
1-640642-7	1-643077-7	4	2	40.64	1.600	43.86	1.727	45.72	1.800	17	4-647002-7
1-640642-6	1-643077-6	4	2	38.10	1.500	41.32	1.627	43.18	1.700	16	4-647002-6
1-640642-5	1-643077-5	4	2	35.56	1.400	38.78	1.527	40.64	1.600	15	4-647002-5
1-640642-4	1-643077-4	4	2	33.02	1.300	36.24	1.427	38.10	1.500	14	4-647002-4
1-640642-3	1-643077-3	4	2	30.48	1.200	33.70	1.327	35.56	1.400	13	4-647002-3
1-640642-2	1-643077-2	2	1	27.94	1.100	31.16	1.227	33.02	1.300	12	4-647002-2
1-640642-1	1-643077-1	2	1	25.40	1.000	28.62	1.127	30.48	1.200	11	4-647002-1
1-640642-0	1-643077-0	2	1	22.86	.900	26.08	1.027	27.94	1.100	10	4-647002-0
640642-9	643077-9	2	1	20.32	.800	23.54	.927	25.40	1.000	9	647002-9
640642-8	643077-8	2	0	17.78	.700	21.00	.827	22.86	.900	8	647002-8
640642-7	643077-7	0	0	15.24	.600	18.46	.727	20.32	.800	7	647002-7
640642-6	643077-6	0	0	12.70	.500	15.92	.627	17.78	.700	6	647002-6
640642-5	643077-5	0	0	10.16	.400	13.38	.527	15.24	.600	5	647002-5
640642-4	643077-4	0	0	7.62	.300	10.84	.427	12.70	.500	4	647002-4
640642-3	643077-3	0	0	5.08	.200	8.30	.327	10.16	.400	3	647002-3
-	643077-2	0	0	2.54	.100	5.76	.227	7.62	.300	2	647002-2
DUST COVER	STRAIN RELIEF COVERS	QTY OF GUSSET RIBS	QTY OF CENTRAL RAILS	MM	IN	MM	IN	MM	IN	NO. OF CIRCUITS	PART NO
△	△	△	△	C		B		A			
ACCESSORIES											

△ SUPERCEDED

△ SUPERCEDED

△ SUPERCEDED

THIS DRAWING IS A CONTROLLED DOCUMENT. DIMENSIONS: mm [INCHES]

TOLERANCES UNLESS OTHERWISE SPECIFIED:
 0 PLC ± -
 1 PLC ± -
 2 PLC ± -
 3 PLC ± -
 4 PLC ± -
 ANGLES ± -

MATERIAL △ FINISH △

DIN B. LEWIS 29--98
 CJK R. SWING 29--98
 J. ELLIS 29--98

Tyco Electronics Corporation
 Harrisburg, Pa 17105-3608

MTA-100 POSTED CONNECTOR ASSEMBLY, CLOSED END, 26 AWG

SIZE: A1 CAGE CODE: 00779 DRAWING NO: 647002
 WEIGHT: -

CUSTOMER DRAWING SCALE: 1:1 SHEET 2 OF 2 REV D2

METRIC