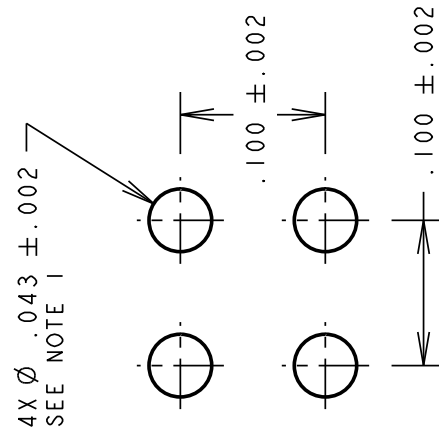
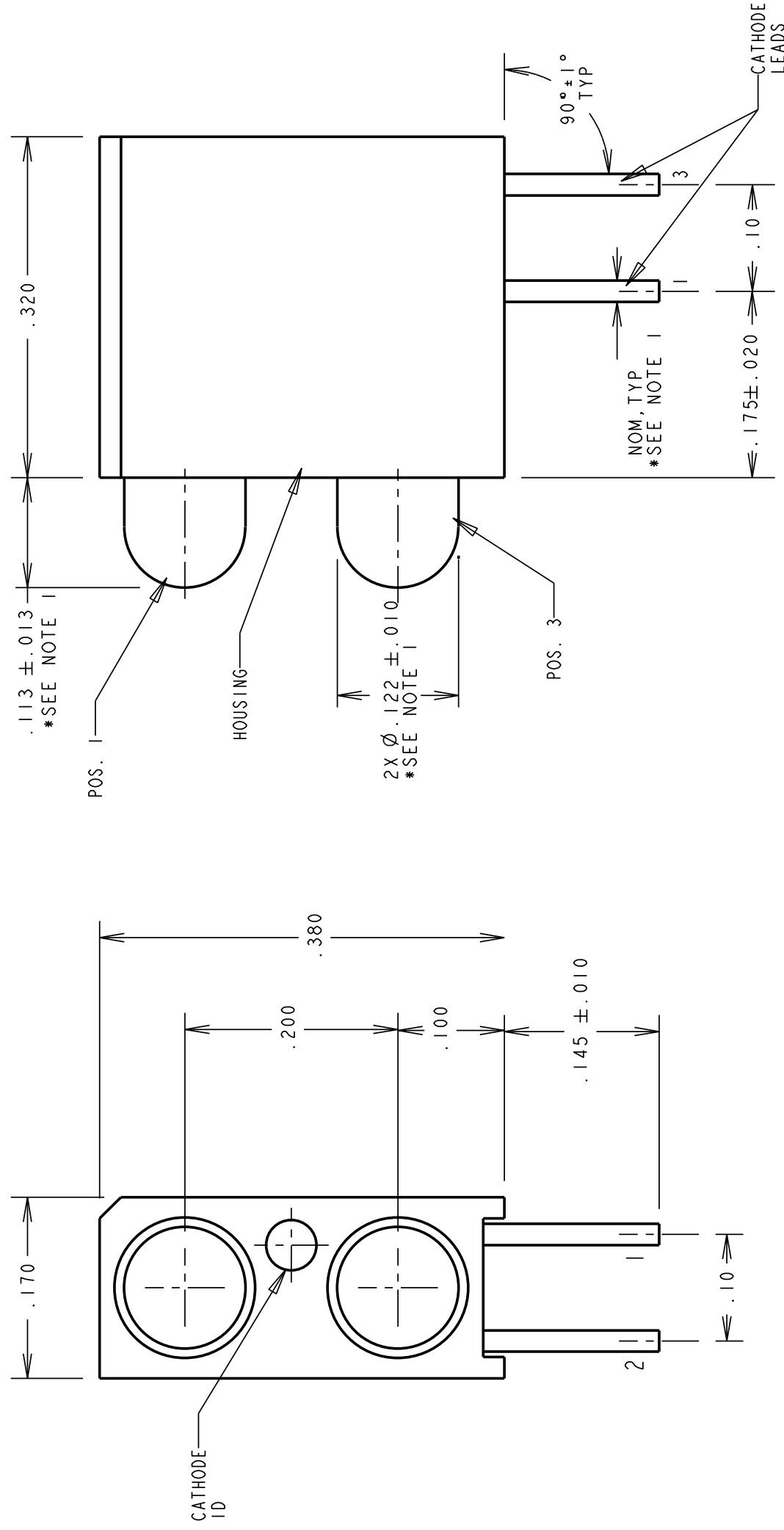
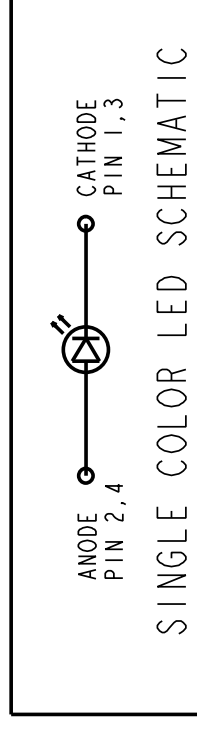


REV	ECN NO	REVISIONS	DRN	CKD	APP	DATE
A		NEW RELEASE	LR	--	N.O.	4-20-95
B		ADDED P/N 553-0188, NOTE 2, LED SPECS & "ATTENTION" NOTE	TC		N.O.	10-18-99
C		ADDED BOTTOM VIEW WITH PIN DESIGNATION AND SCHEMATIC.	TC		N.O.	5-18-99
D		REVISED 5V RED, GREEN AND YELLOW LED SPECS.	TC		N.O.	9-18-00
E		REVISED 2mA RED, GREEN AND YELLOW LED FORWARD VOLTAGE TYP. SPECS., AND RED LUMINOUS INTENSITY TYP. SPEC. ADDED NOTE 3 AND TITLE.	DC		KD	N.O. 2-19-01
F		ADDED P/N 553-0108, 553-0118, 553-0128, 553-0230 & ESD LOGO	JMC	N.O.	MES	3-10-04
G		ADDED P/N 553-0182	JMC	N.O.	Y.C.	11-1-04
H		REV LETTER "G" IN REVISION TABLE WAS "F"	TWC			



RECOMMENDED PC BOARD HOLE PATTERN



NOTE:

- * DENOTES PARTS WITH LED PROTRUSION OF .103 ± .013, WITH LEADS .018 SQ. NOM., LED BODY Ø.115 ± .010 AND THE PC BOARD RECOMMENDED HOLE SIZE IS Ø.040 ± .002.
- DIALIGHT PART NUMBER: 553-0XXX
- PIN NUMBER FOR REFERENCE ONLY, DESIGNATION NON-EXISTENT ON PARTS.



*** ATTENTION ***
OBSERVE PRECAUTIONS FOR HANDLING ELECTROSTATIC SENSITIVE DEVICES

SCALE	DRAWING SCALE	DRAWING NUMBER	REV
ALL DIM'S IN: INCHES (MM) <td></td> <td>C-15967</td> <td>H</td>		C-15967	H
TOLERANCES:	UNLESS OTHERWISE SPECIFIED	TITLE	MATERIAL
FRACTIONS: ±1/64		3mm LED BI-LEVEL CBI	
DECIMALS (.XX): ±.02			
DECIMALS (.XXX): ±.015			
DECIMALS (.XXXX): ±.0005			
ANGLES: ±1°			
FINISH:			
FSCM	83330	SHEET 1 OF 1	FAMILY TABLES:

THIS DRAWING AND THE CONTENTS HEREIN ARE CONFIDENTIAL AND THE SOLE PROPERTY OF DIALIGHT. REPRODUCTION OF THIS DRAWING OR CONSTRUCTION OF ANY PARTS WITHIN THIS DRAWING ARE FORBIDDEN WITHOUT THE WRITTEN CONSENT OF DIALIGHT.

OPERATING CHARACTERISTICS AT T _A = 25 °C							
SYMBOL	PARAMETER	COLOR	MIN	TYP	MAX	UNITS	TEST COND.
V _F	FORWARD VOLTAGE	RED	1.7	2.2		V	I _F = 2 mA
V _R	REVERSE VOLTAGE	YELLOW	1.8	2.7		V	I _R = 50 μA
λ _{PK}	PEAK WAVELENGTH	GREEN	1.9	2.2		nm	MEASURED AT PEAK
I _V	LUMINOUS INTENSITY	ALL	5			mc d	I _F = 2 mA

OPERATING CHARACTERISTICS AT T _A = 25 °C							
SYMBOL	PARAMETER	COLOR	MIN	TYP	MAX	UNITS	TEST COND.
V _F	FORWARD VOLTAGE	RED	2.0	3.0		V	I _F = 10 mA
V _R	REVERSE VOLTAGE	YELLOW	2.1	3.0		V	I _R = 10 μA
λ _{PK}	PEAK WAVELENGTH	GREEN	2.1	3.0		nm	MEASURED AT PEAK
I _V	LUMINOUS INTENSITY	BLUE	3.5	4.2		mc d	I _F = 10 mA

5 V, INTEGRAL RESISTOR LED OPERATING CHARACTERISTICS AT T _A = 25 °C							
SYMBOL	PARAMETER	COLOR	MIN	TYP	MAX	UNITS	TEST COND.
I _F	FORWARD CURRENT	RED	10	20		mA	V _F = 5 V
V _R	REVERSE VOLTAGE	YELLOW	10	20		V	I _R = 100 μA
λ _{PK}	PEAK WAVELENGTH	GREEN	5	635		nm	MEASURED AT PEAK
I _V	LUMINOUS INTENSITY	ALL	8.7	29		mc d	V _F = 5 V

Dialight
1501 ROUTE 34 SOUTH
FARMINGDALE, NJ 07727

SHEET 1 OF 1 FAMILY TABLES:

FSCM 83330

DATE

REV

APP

DRN

POSITION 1

POSITION 2

NOTE

LED COLOR

ASSY. NO. (CAT. NO.)

553-0101

553-0102

553-0103

553-0108

553-0110

553-0111

553-0112

553-0113

553-0118

553-0120

553-0121

553-0122

553-0123

553-0128

553-0130

553-0131

553-0132

553-0133

553-0182

553-0188

553-0201

553-0202

553-0203

553-0210

553-0211

553-0212

553-0213

553-0220

553-0221

553-0222

553-0223

553-0230

553-0231

553-0232

553-0233

553-0301

553-0302

553-0303

553-0310

553-0311

553-0312

553-0313

553-0320

553-0321

553-0322

553-0323

553-0331

553-0332

553-0333

Downloaded from Arrow.com