

PHYSICAL DIMENSIONS:

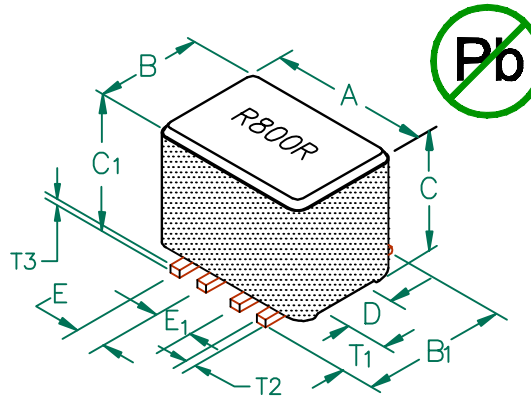
A	6.99 [.275]	+ 0.10 [.004]
B	5.72 [.225]	+ 0.10 [.004]
B ₁	6.73 [.265]	MAX
C	4.32 [.170]	+ 0.08 [.003]
C ₁	5.00 [.197]	MAX.
D	2.41 [.095]	+ 0.08 [.003]
E	0.89 [.035]	+ 0.13 [.005]
E ₁	1.91 [.075]	+ 0.13 [.005]

WIRE:

T ₁	1.91 [.075]	+ 0.25 [.010]
T ₂	0.38 [.015]	TYP.
T ₃	0.38 [.015]	TYP.

CM2722R800R-10

UNCONTROLLED DOCUMENT



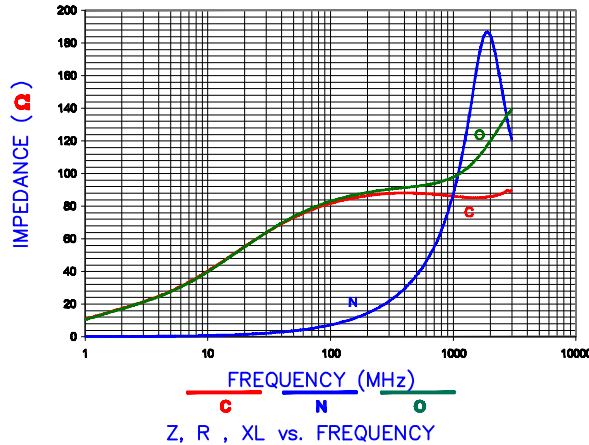
ELECTRICAL CHARACTERISTICS:

Z @ 100MHz (Ω)	DCR (Ω)	Rated Current	Rated Voltage (VDC)
Nominal	80		
Minimum	64		
Maximum	-	0.02	5,000 mA
			30

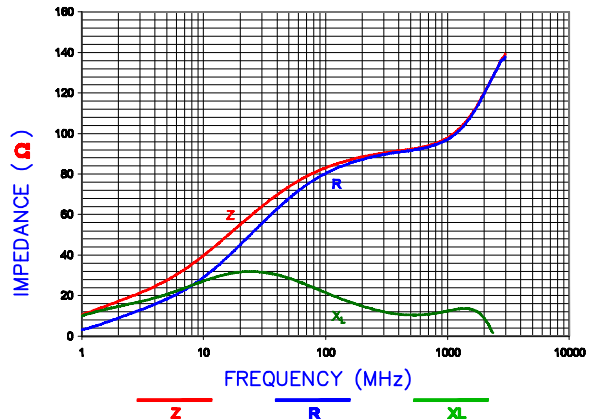
NOTES: UNLESS OTHERWISE SPECIFIED

1. TAPED AND REELED per CURRENT EIA SPECIFICATIONS 13" REELS, 1000 PCS PER REEL.
2. COMPONENTS SHOULD BE ADEQUATELY PREHEATED BEFORE SOLDERING.
3. REF. CARRIER TAPE SPECIFICATION # CART2722-OP.
4. OPERATION TEMPERATURE (INCLUDING SELF-HEATING): -40 ~ +125°C.

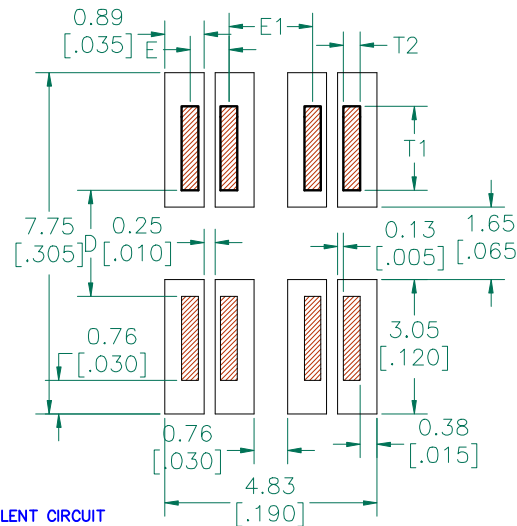
Z vs. FREQUENCY (C,O,N)



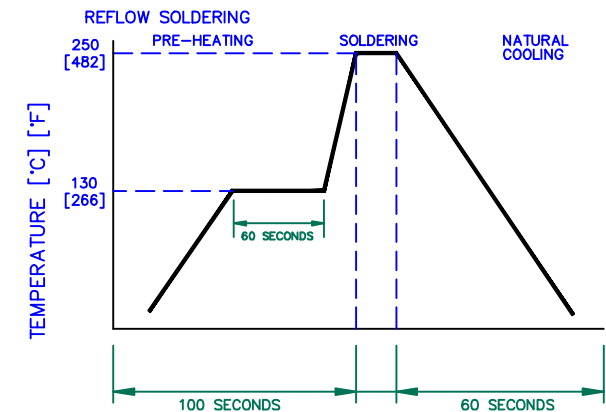
Z, R, XL vs. FREQUENCY



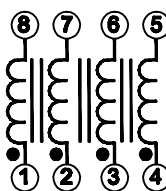
LAND PATTERNS FOR REFLOW SOLDERING



RECOMMENDED SOLDERING CONDITIONS

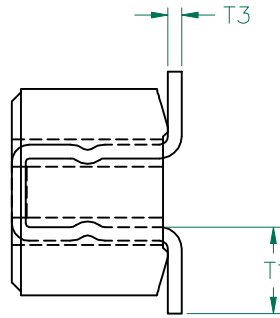
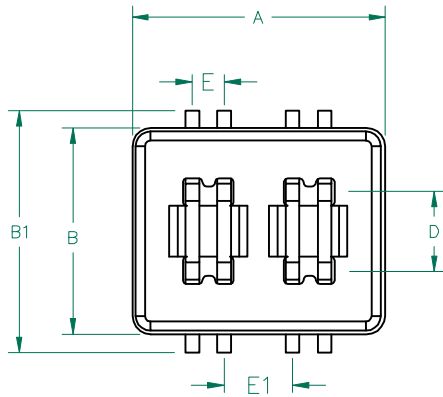


EQUIVALENT CIRCUIT NO POLARITY



DIMENSIONS ARE IN mm (INCHES).

This print is the property of Laird Tech. and is loaned in confidence subject to return upon request and with the understanding that no copies shall be made without the written consent of Laird Tech. All rights to design or invention are reserved.			Laird TECHNOLOGIES		
D	ADD RATED VOLTAGE AND NOTE 4	08/30/12	QIU	PROJECT/PART NUMBER:	CM2722R800R-10
C	UPDATE COMPANY LOGO, ADD EQUIVALENT CIRCUIT	01/30/09	JRK	REV	D
B	UPDATE CO. LOGO, ADD ROHS & KGS TO WGT	11/15/07	JRK	PART TYPE:	ASSEMBLY
A	ORIGINAL DRAFT	10/06/03	JRK	DATE:	10/06/03
REV	DESCRIPTION	DATE	INT	CAD #	CM2722R800R-10-D-2
				SCALE:	NTS
				TOOL #	H0275-0
				SHEET:	2 of 3
				DRAWN BY:	JRK



SCALE DRAWING 1:1

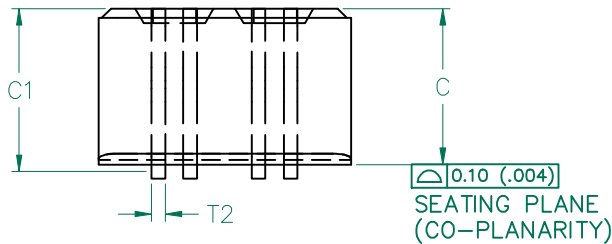
CM2722R800R-10

ELECTRICAL TESTING

	GROSS	GROSS
TEST:	Z	Z
# TURNS	1	1
AWG	22	22
FREQUENCY	25 MHz	100 MHz
NOMINAL	60 Ω	80 Ω
MINIMUM	45 Ω	64 Ω

WEIGHT/1000 0.725 kgs. 1.60 lbs.

UNCONTROLLED DOCUMENT



DIMENSIONS:

A	6.99 [.275]	+ 0.10 [.004]
B	5.72 [.225]	+ 0.10 [.004]
B ₁	6.73 [.265]	MAX
C	4.32 [.170]	+ 0.08 [.003]
C ₁	5.00 [.197]	MAX.
D	2.41 [.095]	+ 0.08 [.003]
E	0.89 [.035]	+ 0.13 [.005]
E ₁	1.91 [.075]	+ 0.13 [.005]

WIRE DIMENSIONS:

T ₁	1.91 [.075]	+ 0.25 [.010]
T ₂	0.38 [.015]	TYP.
T ₃	0.38 [.015]	TYP.

NOTES: UNLESS OTHERWISE SPECIFIED

1. WIRE: REFERENCE STEWARD WIRE PURCHASE SPEC. WS15X15-100.
2. IMPEDANCE VALUES ARE GROSS, MEASURED USING WS15X15-100 WIRE PLACED AGAINST END OF SLOT w/ NO D.C. BIAS.
3. REFERENCE STEWARD CORE 24H0275-000.
4. NO MORE THAN 0.18 [.007] DIFFERENCE FROM THE LONGEST TO THE SHORTEST CONDUCTOR ON ONE SIDE.

DIMENSIONS ARE IN mm (INCHES).				This print is the property of Laird Tech. and is loaned in confidence subject to return upon request and with the understanding that no copies shall be made without the written consent of Laird Tech. All rights to design or invention are reserved.		
D	ADD RATED VOLTAGE AND NOTE 4	08/30/12	QIU			
C	UPDATE COMPANY LOGO, ADD EQUIVALENT CIRCUIT	01/30/09	JRK			
B	UPDATE CO. LOGO, ADD ROHS & KGS TO WGT	11/15/07	JRK			
A	ORIGINAL DRAFT	10/06/03	JRK			
REV	DESCRIPTION	DATE	INT			
PROJECT/PART NUMBER: CM2722R800R-10				REV: D	PART TYPE: ASSEMBLY	DRAWN BY: JRK
DATE: 10/06/03				SCALE: NTS	SHEET: 3 of 3	
CAD # CM2722R800R-10-D-3				TOOL # H0275-0		